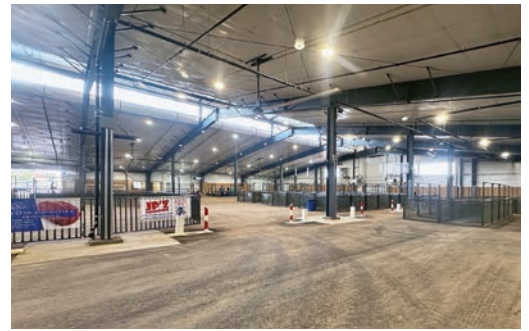


Curry County Livestock Pavilion



a **NUCOR**® company



LOCATION

Clovis, MI

SIZE

57,216 sf

WALL SYSTEM

R-Panel
Brite Red

ROOF SYSTEM

Nucor CFR
Regal White

BUILDING END-USE

Livestock Pavilion

This eye-catching multi-purpose livestock pavilion includes a 197' by 272' open area with a vaulted entry and clerestory centered on the main building with louvers and windows for natural daylighting. A couple of single slopes and lean-to structures complete the over 57,000 sf facility.

The pavilion also features overhead doors for easy access of livestock and equipment and portable stalls allow for a large open floor plan and flexible area when needed. The exterior includes a combination of concrete block and Nucor's R-Panel in Brite Red for the walls, while the roof and clerestory utilize Nucor's CFR roof panel in Regal White — a classic agriculture aesthetic. Rake and eave extensions surround the building and provide shelter and a metal canopy at the entrance enhance the overall exterior appeal.