

February 2022

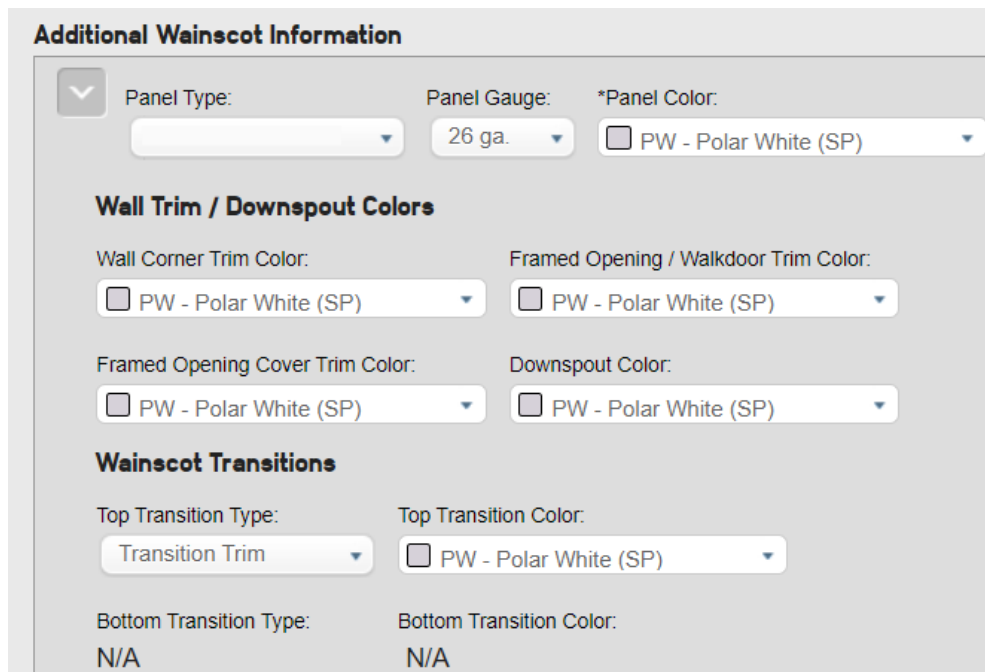
## Scope and Price Wainscot in eQuote

NBS has added a way to scope Metal Panel Wainscot on your buildings in eQuote. The system will report the wainscot information on the proposal and price accordingly. This is handled in the “Wall Deletions” section of eQuote and is very simple and quick to add, just like other wall deletions. (Note: keep in mind that “wall deletions” is more about “wall conditions” as some wall deletion types may leave the panel in place.)

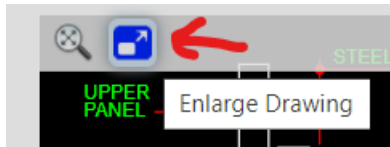
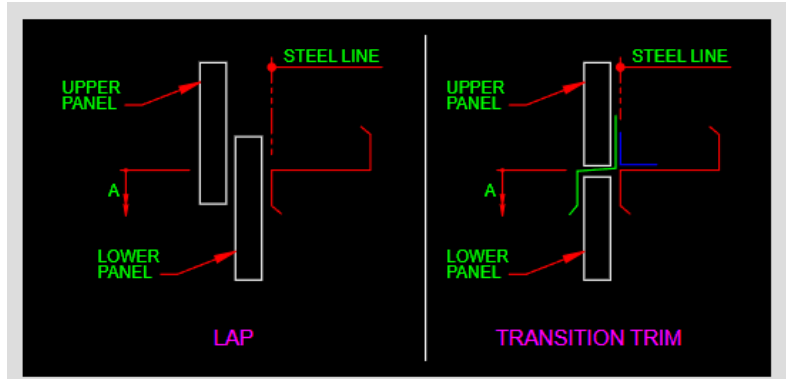
To add Metal Panel Wainscot, define the “Wall Deletion” type and size, and choose the appropriate material type:



You can set the additional wainscot information by choosing the panel type, gauge, and color that you want in the wainscot area. Add the trim and downspout colors that should apply to the wainscot area, and select the transition type and color of the transition trim, if “Lap” is not chosen:



The detail drawings illustrate the lap options. You can select the enlarge button to make the drawings easier to see.



As you would expect, the Wainscot Information shows up in the Wall Deletions section of the proposal:

11) WALL DELETIONS									
ID	Building Name	Wall ID	Loc. LSL	Width	Top Elevation	Open / Materials?	Allow X-Bracing?	Remove Panels	Wind Load Conf.
					Bottom Elevation	Support Type*	Col. Fig. Bracing	Remove Girts	
1	Main	REW	Full Width	Full Width	4'-0"	Metal Panel	Yes	Yes	Yes
					0'-0"	Wainscot	No	No	
Girts by Seller									
Wainscot Information									
Deletion ID: 1			Wall Corner Trim Color: PW			Top Transition Type: Transition Trim			
Panel Type:			F.O. / Walkdoor Trim Color: PW			Top Transition Color: PW			
Panel Gauge: 26 ga.			F.O. Cover Trim Color: PW			Bottom Transition Type: N/A			
Panel Color: PW			Downspout Color: PW			Bottom Transition Color: N/A			

Best of all, eQuote will price these conditions, so you no longer need to submit this condition to Estimating!

If you have any questions, please contact your DSM, Estimator, or PC.