

January 2021

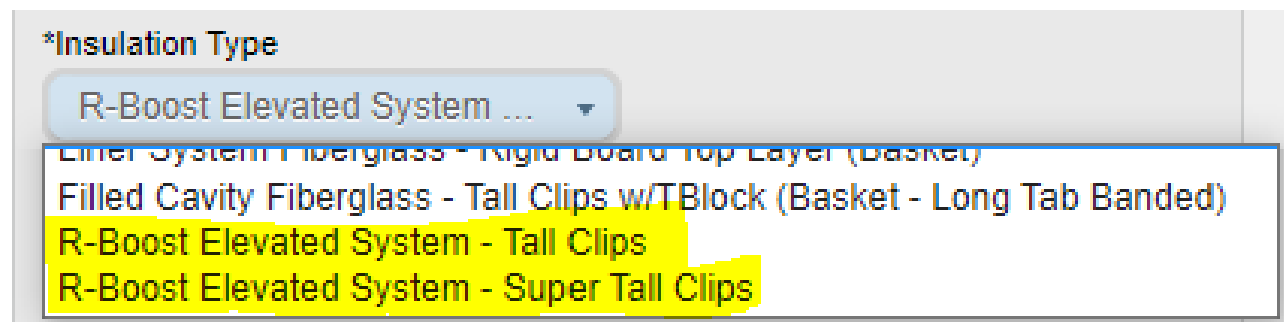
Simple Steps to Add R-Boost Insulation System in eQuote

NBS has recently introduced the R-Boost™ Elevated Roof Insulation System. R-Boost is an economical solution that achieves the increased levels of thermal performance the latest codes demand. This unique patent-pending design features a bridge between an initial and secondary layer of blanket insulation, doubling the insulation capacity and meeting energy codes throughout North America.

Now, you can add this insulation type to your project in eQuote!

Requesting R-Boost Elevated Insulation System in eQuote

You can request R-Boost in the *Roof Panel* screen in eQuote, in the *Insulation Type* dropdown.

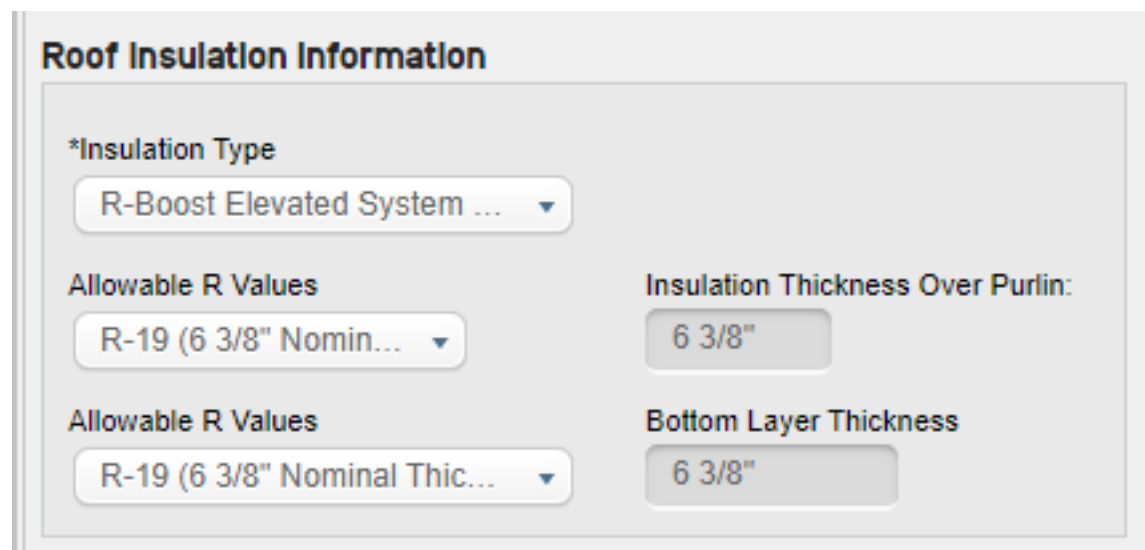


*Insulation Type

R-Boost Elevated System ...

- Liner System Fiberglass - Rigid Board Top Layer (Basket)
- Filled Cavity Fiberglass - Tall Clips w/TBlock (Basket - Long Tab Banded)
- R-Boost Elevated System - Tall Clips
- R-Boost Elevated System - Super Tall Clips

1. Choose between tall clips and super tall clips.
2. Choose the R-value for each layer.



Roof Insulation Information

*Insulation Type

R-Boost Elevated System ...

Allowable R Values

R-19 (6 3/8" Nomin...)

Insulation Thickness Over Purlin:

6 3/8"

Allowable R Values

R-19 (6 3/8" Nominal Thic...)

Bottom Layer Thickness

6 3/8"

Once you have successfully added R-Boost to your project, you will see it reflected on the proposal.
*This system is not yet priceable in eQuote, so it will prompt you to get adjusted pricing from estimating.

6) ROOF PANEL					
Building Name	Roof Panel Type	Ext. Gauge	Ext. Color	Clip Type	Roof Insulation*
MAIN		24 ga.	TBK	Sliding	R-25 (8") - R-Boost Elevated System - Tall Clips (R-19 (6 3/8") - Bottom Layer Thickness)

Warnings

	Due to Future Expansion loads this project will require estimating assistance.
Main	Roof Panel: A partial quote will be required due to the R-Boost Insulation type not being eQuote priceable. Please contact your local Estimating Department.

Insulation Update in eQuote

Improvements have been made in the clarity of communication of the insulation information for our Builders in eQuote. More types than ever are listed, and each layer now shows the appropriate R-value and nominal thickness.

Roof Insulation Information

*Insulation Type

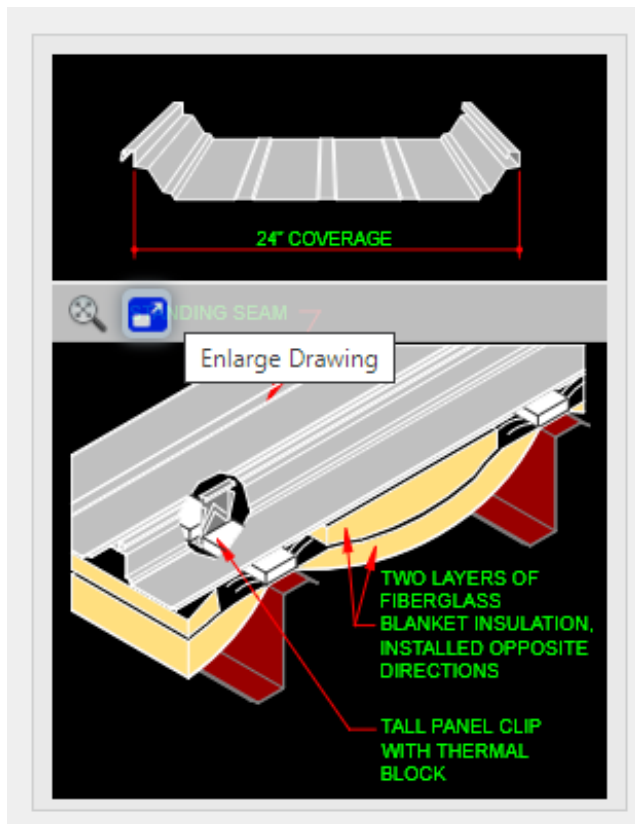
Double Layer Fiberglass - ... ▾

Choose...

- Uninsulated - EPS Foam Spacer (Short Clips)
- Uninsulated - 1 1/2" w/TBlock (Tall Clips)
- Single Layer Fiberglass - Short Clips
- Single Layer Fiberglass - Tall Clips w/TBlock
- Double Layer Fiberglass - Tall Clips w/TBlock (Sag & Bag)
- Dispenser System - Clamp Style - Tall Clips w/ TBlock
- Dispenser System - Platform Style - Tall Clips w/ TBlock
- Liner System Fiberglass - Short Clips No TBlock (Basket)
- R Liner System Fiberglass - Tall Clips w/Thermal Block (Basket)
- Liner System Fiberglass - Rigid Board Top Layer (Basket)
- Filled Cavity Fiberglass - Tall Clips w/TBlock (Basket - Long Tab Banded)
- R-Boost Elevated System - Tall Clips
- R-Boost Elevated System - Super Tall Clips

<p>Allowable R Values</p> <p>R-13 (4 3/8" Nomin... ▾</p>	<p>Top Layer Thickness Over Purlin:</p> <p>4 3/8"</p>
<p>Allowable R Values</p> <p>R-13 (4 3/8" Nominal Thic... ▾</p>	<p>Between the Purlins Layer Thickness</p> <p>4 3/8"</p>

Also, the Roof Sheeting screen now displays the panel profile and the insulation profile in sketches that can be enlarged to inform your selection.



For more information regarding the R-Boost Elevated Roof Insulation System, please click the link below:

[R-Boost™ Elevated Roof Insulation System](#)