



# PRODUCT BULLETIN

## ENHANCED & EXPANDED PRODUCT OFFERING – TrussFrame Modular Option

April 10, 2014

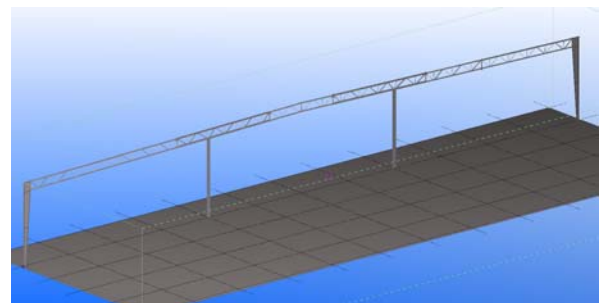
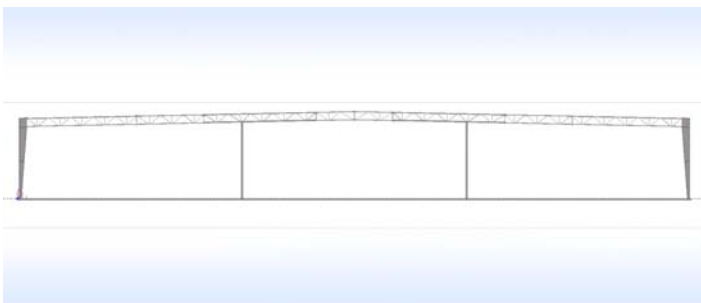
Nucor Building Systems is constantly seeking ways to expand our product offering and remain the low cost supplier for our Builders. We are pleased to announce the expansion of capabilities of our **TrussFrame open web rafter system, to now include a modular frame option.**

The TrussFrame modular option utilizes interior columns to allow for even larger and wider building sizes. The interior columns evenly distribute the weight of the structure, which reduces loading requirements and rafter depths to provide a more economical option for large buildings. For size limitations on specific projects, contact your local sales representative.

### TrussFrame Features:

- Clearspans and Modular multi-spans in excess of 250' +, depending on design criteria
- Open web rafter system with solid web columns
- Available in Gable and Single Slope
- Allows HVAC, wiring, sprinkler systems, and lighting to be incorporated into the trusses
- Compatible with all Nucor roof panel offerings
- Available in Gray Primer and Galvanized only (additional lead times apply to Galvanized)

**Critical Dates:** Available for quote and order immediately. Contact a local Sales Representative.



### Our Commitment

Nucor Building Systems is committed to ongoing improvements in all aspects of our business. This change is intended to enhance our product offerings and improve our costs and competitiveness in the market place. Your input and comments are always greatly appreciated. If you have specific questions regarding this bulletin or any other area of our business, please contact your District Sales Manager, Project Coordinator, or our Engineering Group.

**INDIANA**  
305 Industrial Parkway  
Waterloo, IN 46793  
(260) 837-7891  
fax (260) 837-7384

**SOUTH CAROLINA**  
200 Whetstone Road  
Swansea, SC 29160  
(803) 568-2100  
fax (803) 568-2121

**TEXAS**  
600 Apache Trail  
Terrell, TX 75160  
(972) 524-5407  
fax (972) 524-5417

**UTAH**  
1050 N. Watery Lane  
Brigham City, UT 84302  
(435) 919-3100  
fax (435) 919-3101

**NE SALES OFFICE**  
201 Granite Run Dr., Suite 280  
Lancaster, PA 17601  
(717) 735-7766  
fax (717) 735-7769