



PRODUCT BULLETIN

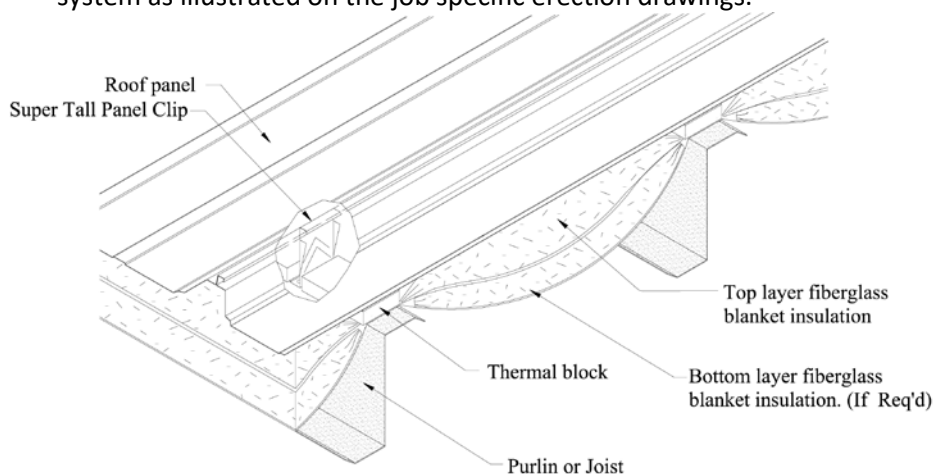
January 31, 2018

Nucor Building Systems is constantly seeking ways to improve our product offering, add value and remain the low cost supplier for our Builders. We are pleased to announce that NBS will now be offering a super tall CFR Roof Panel Clip. The new clip has a stand-off of 2 ½" and will allow insulation over the roof secondary member greater than 8" (R25) up to and including 12" (R38).

With this new clip it provides a more competitive cost solution (where applicable) to IMP or complex insulation systems such as liner systems, rigid board, etc. UL approval has been obtained and FM is not available at this time.

The installation of the system requires special attention to maintain proper panel modularity and thermal performance as noted below:

1. To aid in panel modularity, use the suggested clamping method as illustrated on the job specific erection drawings.
2. Ensure the insulation is permitted to sag at mid-span between purlins and expand to the full thickness of the insulation as illustrated on the job specific erection drawings.
3. Do not pull the insulation taut as this will significantly reduce the thermal performance of the roof system as illustrated on the job specific erection drawings.



Super Tall CFR Clip
2 ½" Standoff

INSULATION THICKNESS

Top & Bottom Layers: No Requirements. Adjust sag in bottom layer as needed to accommodate top layer thickness
Minimum amount of insulation over top of secondary member= 9"
Maximum amount of insulation over top of secondary member = 12"

Critical Dates: The new product offering is now available and will be included in eQuote February 6, 2018. Contact your local Sales Representative for more information.

Our Commitment

Nucor Building Systems is committed to ongoing improvements in all aspects of our business. This change is intended to enhance our product offerings and improve our costs and competitiveness in the market place. Your input and comments are always appreciated. If you have specific questions regarding this bulletin or any other area of our business, please contact your District Sales Manager or Project Coordinator.

INDIANA
305 Industrial Parkway
Waterloo, IN 46793
(260) 837-7891
fax (260) 837-7384

SOUTH CAROLINA
200 Whetstone Road
Swansea, SC 29160
(803) 568-2100
fax (803) 568-2121

TEXAS
600 Apache Trail
Terrell, TX 75160
(972) 524-5407
fax (972) 524-5417

UTAH
1050 N. Watery Lane
Brigham City, UT 84302
(435) 919-3100
fax (435) 919-3101