



PRODUCT & ENGINEERING MANUAL

TABLE OF CONTENTS

GENERAL AND DOWNSPOUT DETAILS.....	3
WS0010PE – Panel Profiles.....	3
GA0041 – Nucor Accent Wall™ – Erection Notes.....	4
GA0051 – Nucor Classic Wall™ – Erection Notes.....	5
GA0061 – Nucor Reverse Classic Wall™ – Erection Notes.....	6
GA0130 – Standard Downspout “S”.....	7
GA0300 – Standard Connector Box.....	8
GA0150 – Standard Downspout With Collector Box Assembly.....	9
GA0170 – Standard Downspout @ Eave Overhang.....	10
BASE CONDITION DETAILS.....	11
STANDARD FINISHED FLOOR DETAILS.....	11
GB0010 – Base Angle Trim.....	11
GB0020 – Base Angle with Trim.....	12
GB0030 – Base Channel with Trim.....	13
GB0031 – Hot-Rolled Base Channel with Trim.....	14
GB0040 – Base Angle with Alternate Trim.....	15
GB0050 – Base Channel with Alternate Trim.....	16
GB0051 – Hot-Rolled Base Channel with Alternate Trim.....	17
STANDARD ABOVE FINISHED FLOOR DETAILS.....	18
GB0100 – Base Angle with Trim AFF.....	18
GB0110 – Base Channel with Trim AFF.....	19
GB0120 – Hot-Rolled Base Channel with Trim AFF.....	20
STANDARD CONCRETE NOTCH DETAILS.....	21
GB0200 – Concrete Notch with Base Angle and Panel.....	21
GB0210 – Concrete Notch with Base Channel and Panel.....	22
GB0220 – Concrete Notch with Hot-Rolled Base Channel and Panel.....	23
CORNER DETAILS.....	24
GC0021 – Outside Corner @ Nucor Classic Wall™ Panel.....	24
GC0051 – Inside Corner @ Nucor Classic Wall™ Panel.....	25
GC0011 – Outside Corner @ Nucor Accent Wall™ PANEL.....	26
GC0041 – Inside Corner @ Nucor Accent Wall™ PANEL.....	27
GC0031 – Outside Corner @ Nucor Reverse Classic Wall™ Panel.....	28
GC0061 – Inside Corner @ Nucor Reverse Classic Wall™ Panel.....	29



PRODUCT & ENGINEERING MANUAL

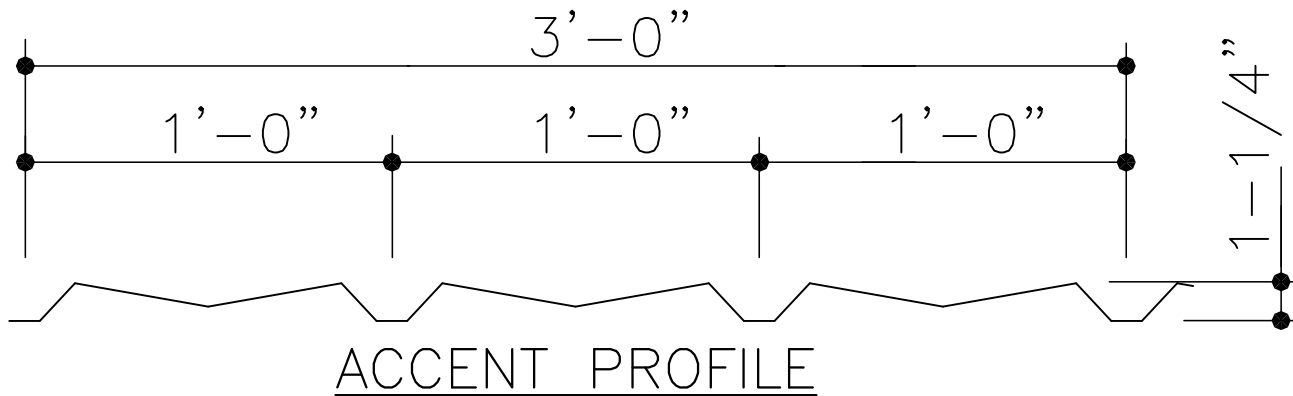
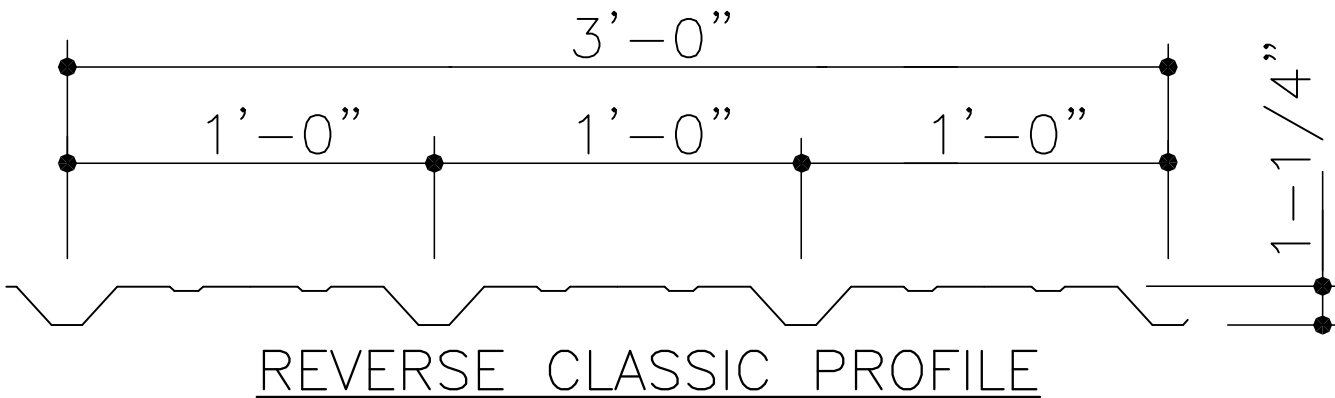
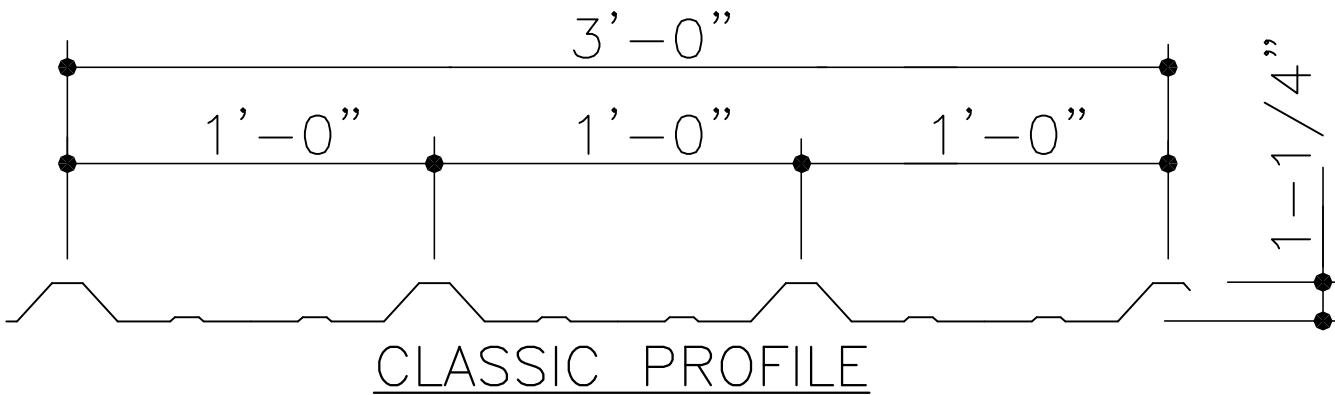
GC0041 – Inside Corner @ Nucor Accent Wall™ PANEL	27
GC0031 – Outside Corner @ Nucor Reverse Classic Wall™ Panel.....	28
GC0061 – Inside Corner @ Nucor Reverse Classic Wall™ Panel.....	29
GC0081 – Inside Transition Corner With “Classic Wall” @ Masonry Wall or Existing Building (Jamb Trim).....	30
GC0071 – Inside Transition Corner With Accent Wall Panel @ Masonry Wall or Existing Building (Jamb Trim).....	31
GC0091 – Inside Transition Corner With Reverse “Classic Wall” @ Masonry Wall or Existing Building (Jamb Trim).....	32
FRAMED OPENING DETAILS	33
GD0005 – CEE Channel Cover Trim Detail	33
GD0040 – Door Framed Opening Trim	34
GD0070 – Window Framed Opening Trim	35



PRODUCT & ENGINEERING MANUAL

GENERAL AND DOWNSPOUT DETAILS

WS0010PE – PANEL PROFILES





PRODUCT & ENGINEERING MANUAL

GA0041 – NUCOR ACCENT WALL™ – ERECTION NOTES

"ACCENT PANEL" ERECTION NOTES

• H1060 STITCH FASTENER
 ▣ H1040 STRUCTURAL FASTENER

36"

EAVE MEMBER

WALL PANEL

SIDE LAP

GIRTS

H1060 AT 30" O.C. MAXIMUM BETWEEN SUPPORTS

H1060 12" O.C. AT TRIM

CORNER TRIM

BASE MEMBER

(PANELS 36" NET LAY)

ERECTOR NOTE: 1/2" SIDELAP MASTIC (H3010) IS REQUIRED IN SNOWDRIFT CONDITIONS. REFER TO THE ELEVATIONS FOR LOCATION REQUIREMENTS.

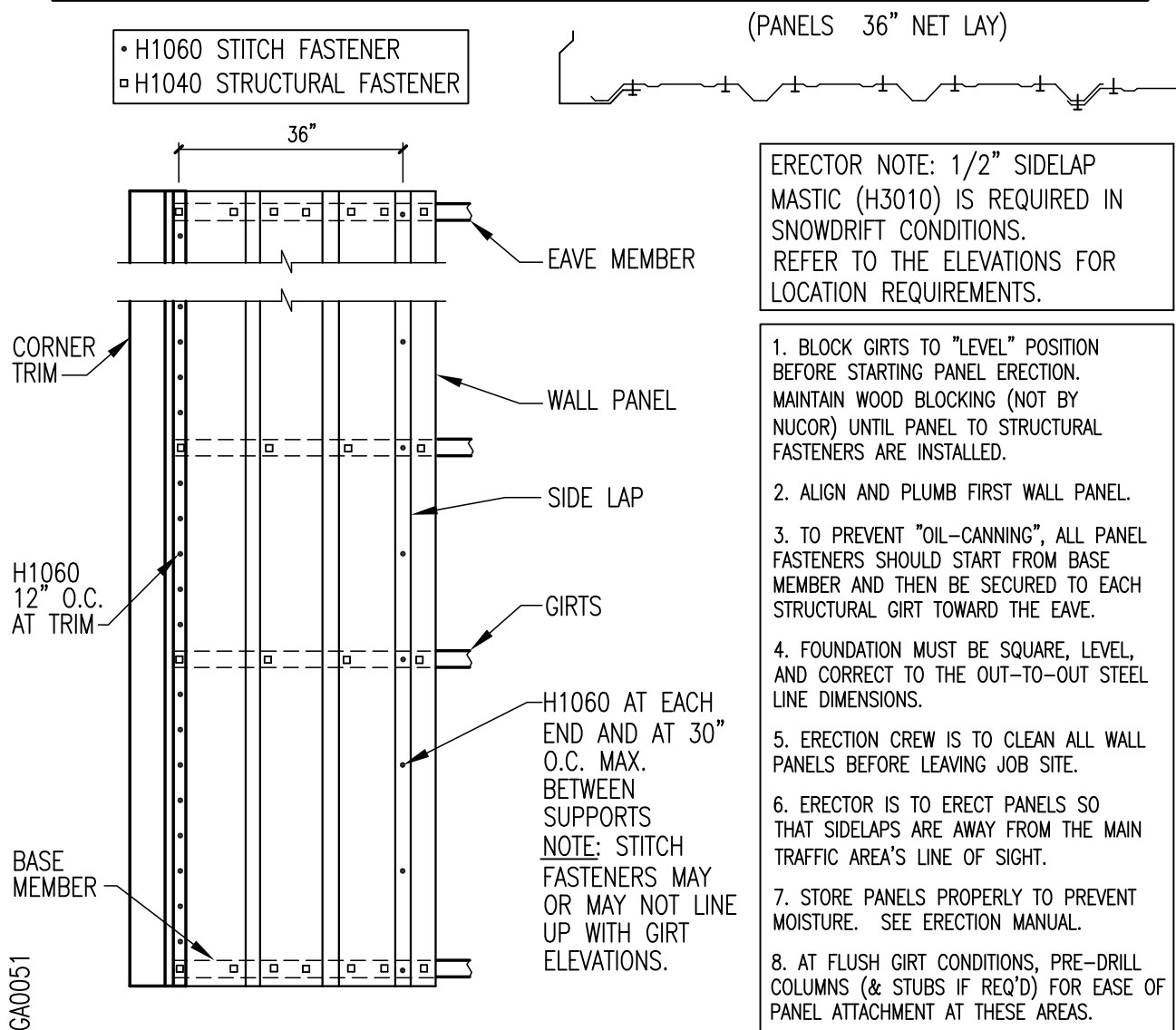
1. BLOCK GIRTS TO "LEVEL" POSITION BEFORE STARTING PANEL ERECTION. MAINTAIN WOOD BLOCKING (NOT BY NUCOR) UNTIL PANEL TO STRUCTURAL FASTENERS ARE INSTALLED.
2. ALIGN AND PLUMB FIRST WALL PANEL.
3. TO PREVENT "OIL-CANNING", ALL PANEL FASTENERS SHOULD START FROM BASE MEMBER AND THEN BE SECURED TO EACH STRUCTURAL GIRT TOWARD THE EAVE.
4. FOUNDATION MUST BE SQUARE, LEVEL, AND CORRECT TO THE OUT-TO-OUT STEEL LINE DIMENSIONS.
5. ERECTION CREW IS TO CLEAN ALL WALL PANELS BEFORE LEAVING JOB SITE.
6. ERECTOR IS TO ERECT PANELS SO THAT SIDELAPS ARE AWAY FROM THE MAIN TRAFFIC AREA'S LINE OF SIGHT.
7. STORE PANELS PROPERLY TO PREVENT MOISTURE. SEE ERECTION MANUAL.
8. AT FLUSH GIRT CONDITIONS, PRE-DRILL COLUMNS (& STUBS IF REQ'D) FOR EASE OF PANEL ATTACHMENT AT THESE AREAS.



PRODUCT & ENGINEERING MANUAL

GA0051 – NUCOR CLASSIC WALL™ – ERECTION NOTES

"CLASSIC PANEL" ERECTION NOTES



LAST REVISION
DATE: 09/20/11
BY: RT CHK: EGB

DETAIL NAME IF APPLICABLE
GA0051.DWG

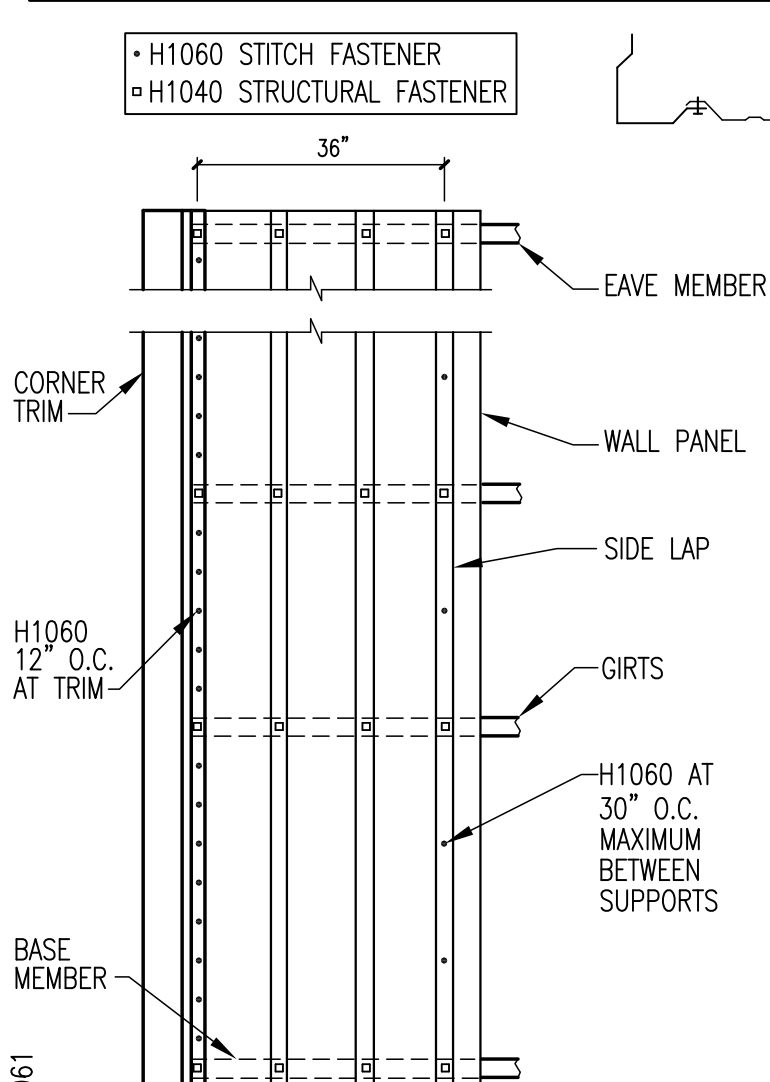
11.5.5



PRODUCT & ENGINEERING MANUAL

GA0061 – NUCOR REVERSE CLASSIC WALL™ – ERECTION NOTES

"REVERSE CLASSIC PANEL" ERECTION NOTES



(PANELS 36" NET LAY)

ERECTOR NOTE: 1/2" SIDELAP MASTIC (H3010) IS REQUIRED IN SNOWDRIFT CONDITIONS. REFER TO THE ELEVATIONS FOR LOCATION REQUIREMENTS.

1. BLOCK GIRTS TO "LEVEL" POSITION BEFORE STARTING PANEL ERECTION. MAINTAIN WOOD BLOCKING (NOT BY NUCOR) UNTIL PANEL TO STRUCTURAL FASTENERS ARE INSTALLED.
2. ALIGN AND PLUMB FIRST WALL PANEL.
3. TO PREVENT "OIL-CANNING", ALL PANEL FASTENERS SHOULD START FROM BASE MEMBER AND THEN BE SECURED TO EACH STRUCTURAL GIRT TOWARD THE EAVE.
4. FOUNDATION MUST BE SQUARE, LEVEL, AND CORRECT TO THE OUT-TO-OUT STEEL LINE DIMENSIONS.
5. ERECTION CREW IS TO CLEAN ALL WALL PANELS BEFORE LEAVING JOB SITE.
6. ERECTOR IS TO ERECT PANELS SO THAT SIDELAPS ARE AWAY FROM THE MAIN TRAFFIC AREA'S LINE OF SIGHT.
7. STORE PANELS PROPERLY TO PREVENT MOISTURE. SEE ERECTION MANUAL.
8. AT FLUSH GIRT CONDITIONS, PRE-DRILL COLUMNS (& STUBS IF REQ'D) FOR EASE OF PANEL ATTACHMENT AT THESE AREAS.

LAST REVISION
DATE: 09/20/11
BY: RT CHK: EGB

DETAIL NAME IF APPLICABLE
GA0061.DWG

11.5.6



PRODUCT & ENGINEERING MANUAL

GA0130 – STANDARD DOWNSPOUT “S”

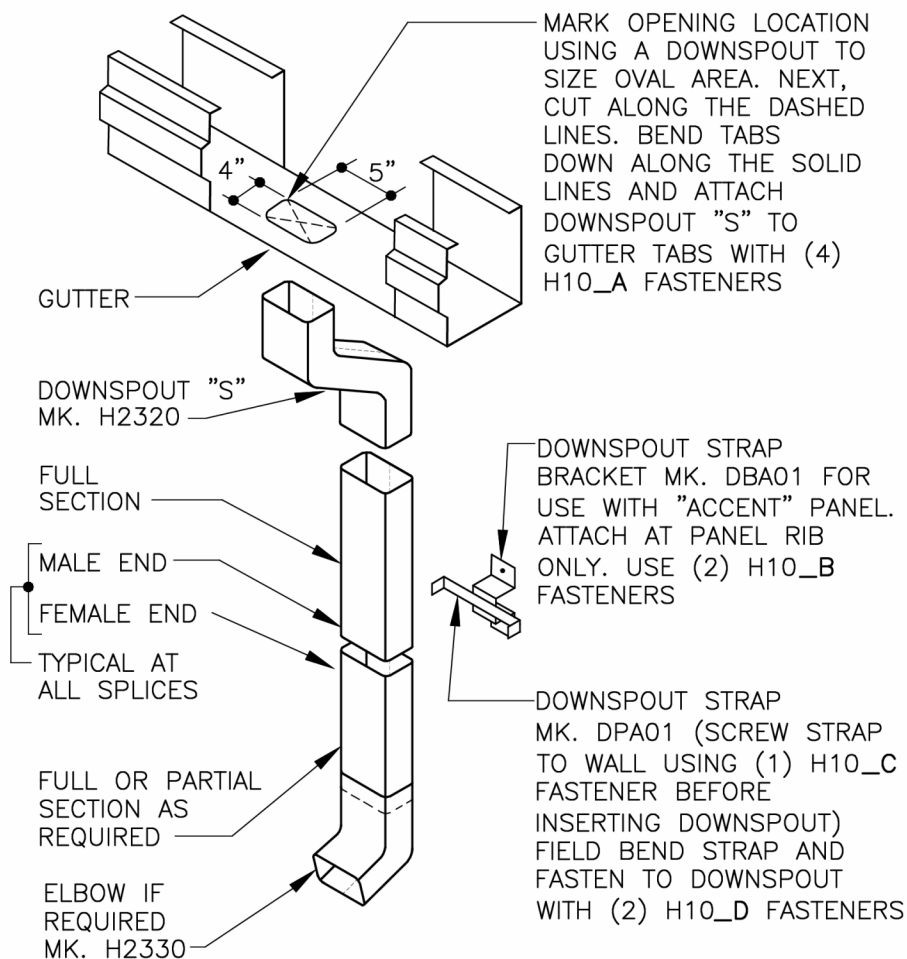
USE (4) POP RIVETS
MK. H1100 AT ALL
ELBOW, “S”, AND
DOWNSPOUT
CONNECTIONS U.N.O.

ERECTOR NOTES:

1. MITERING OF THE “S”
WILL BE REQUIRED AT
SLOPES OVER 4:12 FOR
PROPER LINE UP WITH
THE DOWNSPOUT.

2. IF PROJECT
CONTRACT SPECIFIES “S”
SHAPES AT THE BOTTOM
OF THE DOWNSPOUT IN
LIEU OF ELBOWS, SEE
DETAIL GA0105.

3. LOCATE ONE
DOWNSPOUT STRAP AT
EVERY “S”, ELBOW AND
DOWNSPOUT SPLICE.



GA0130

DOWNSPOUT STRAP (MK. DPA01) AND STRAP BRACKETS (MK. DBA01) ARE ALSO PROVIDED FOR MASONRY WALL APPLICATIONS AS WELL AS FOR ATTACHMENT TO COLUMNS. FASTENERS TO MASONRY ARE NOT PROVIDED BY NUCOR. H10_E FASTENERS ARE PROVIDED FOR COLUMN ATTACHMENT APPLICATIONS, PRE-DRILLING WILL BE REQUIRED.

STANDARD GUTTER AND DOWNSPOUT DETAIL

REFERENCE GUTTER AND DOWNSPOUT SCHEDULE FOR DOWNSPOUT MARK NUMBERS

LAST REVISION
DATE: 12/04/17
BY: KMC CHK: AES

DETAIL NAME IF APPLICABLE
GA0130.DWG

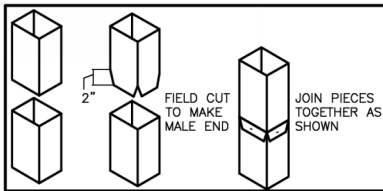
11.5.7



PRODUCT & ENGINEERING MANUAL

GA0300 – STANDARD CONNECTOR BOX

USE DOWNSPOUT STRAPS
MK. DPA01 AS FOLLOWS:
(1) AT EACH DOWNSPOUT SPLICE

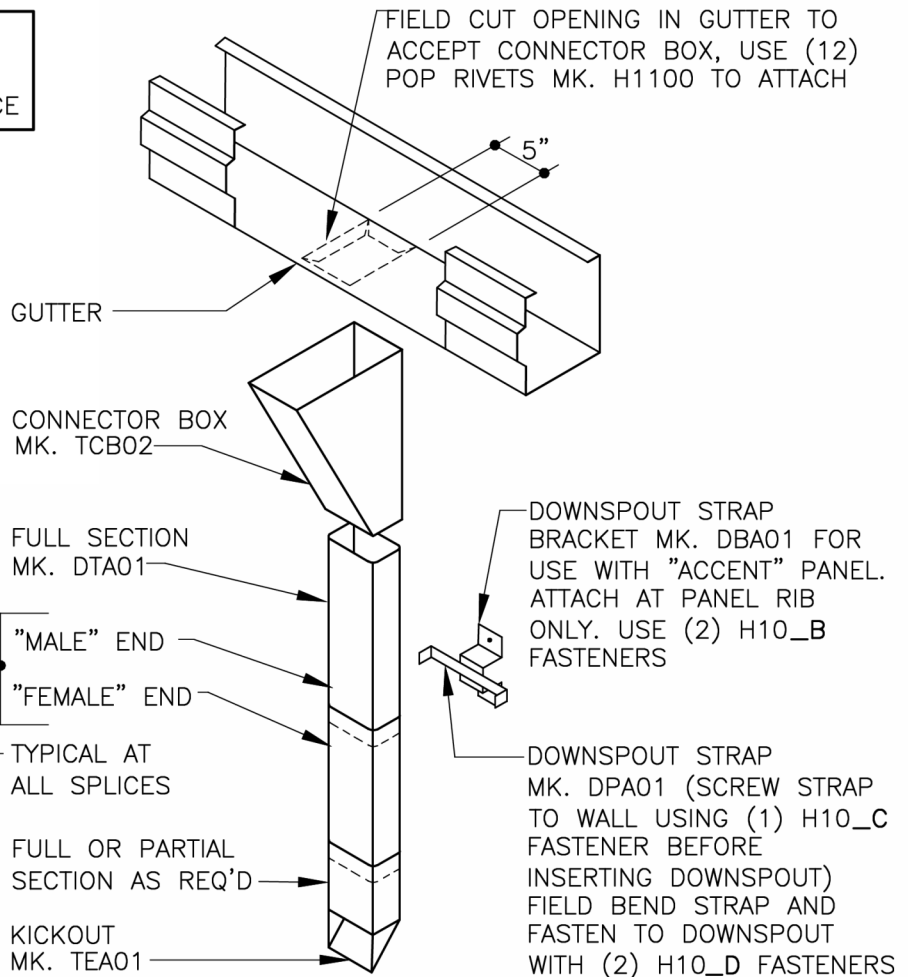


IT IS INTENDED FOR THE LEG
OF THE CONNECTOR BOX,
ADJACENT TO THE WALL, TO
BE INSTALLED IN A PLUMB
POSITION. FIELD MITERING
OF THE TOP OF THE
CONNECTOR BOX MAY BE
REQUIRED TO ACHIEVE THIS.

USE POP RIVETS
MK. H1100 AS FOLLOWS:
(4) EACH SPLICE
(4) EACH KICKOUT

ERECTOR NOTE:

FIELD WORK (2) ELBOWS AS
REQUIRED AT INSET/OUTSET
WALL CONDITION.



DOWNSPOUT STRAP (MK. DPA01) AND STRAP BRACKETS (MK. DBA01) ARE ALSO PROVIDED FOR MASONRY WALL APPLICATIONS AS WELL AS FOR ATTACHMENT TO COLUMNS. FASTENERS TO MASONRY ARE NOT PROVIDED. H10_E FASTENERS ARE PROVIDED FOR COLUMN APPLICATIONS, PRE-DRILLING WILL BE REQUIRED.

STD GUTTER AND PRESS-BROKE DOWNSPOUT DETAIL



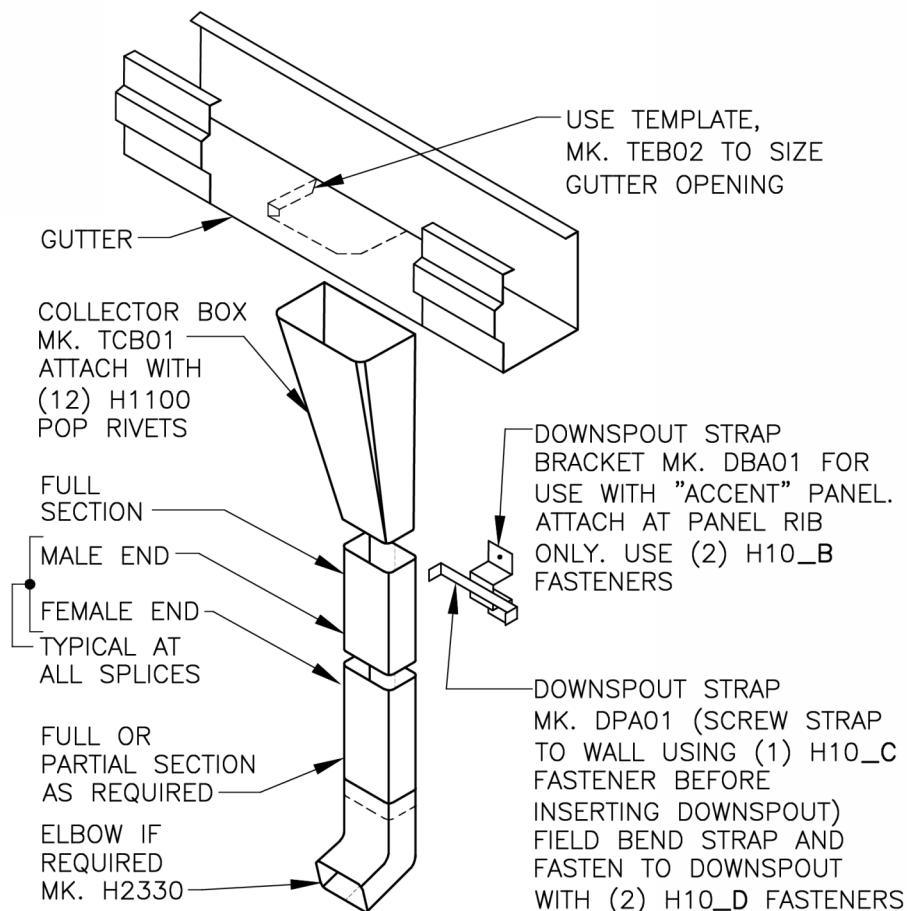
PRODUCT & ENGINEERING MANUAL

GA0150 – STANDARD DOWNSPOUT WITH COLLECTOR BOX ASSEMBLY

USE (4) POP RIVETS
MK. H1100 AT ALL
ELBOW AND DOWNSPOUT
CONNECTIONS U.N.O.

ERECTOR NOTES:

1. IF PROJECT CONTRACT SPECIFIES "S" SHAPES AT THE BOTTOM OF THE DOWNSPOUT IN LIEU OF ELBOWS, SEE DETAIL GA0105.
2. LOCATE ONE DOWNSPOUT STRAP AT EVERY ELBOW AND DOWNSPOUT SPLICE.



GA0150

DOWNSPOUT STRAP (MK. DPA01) AND STRAP BRACKETS (MK. DBA01) ARE ALSO PROVIDED FOR MASONRY WALL APPLICATIONS AS WELL AS FOR ATTACHMENT TO COLUMNS. FASTENERS TO MASONRY ARE NOT PROVIDED BY NUCOR. H10_E FASTENERS ARE PROVIDED FOR COLUMN ATTACHMENT APPLICATIONS, PRE-DRILLING WILL BE REQUIRED.

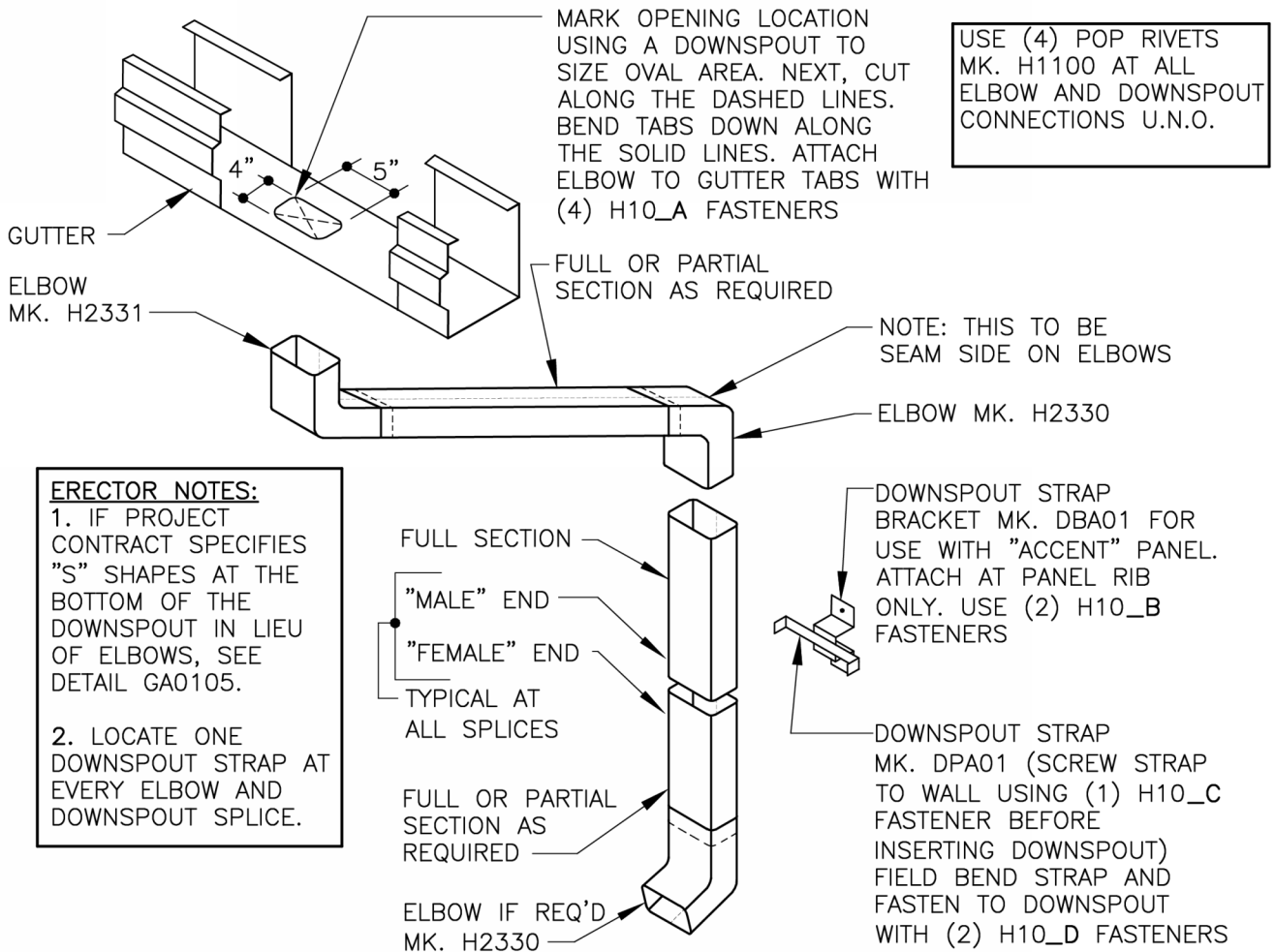
GUTTER & DOWNSPOUT DETAIL WITH COLLECTOR BOX

REFERENCE GUTTER AND DOWNSPOUT SCHEDULE FOR DOWNSPOUT MARK NUMBERS



PRODUCT & ENGINEERING MANUAL

GA0170 – STANDARD DOWNSPOUT @ EAVE OVERHANG



DOWNSPOUT STRAP (MK. DPA01) AND STRAP BRACKETS (MK. DBA01) ARE ALSO PROVIDED FOR MASONRY WALL APPLICATIONS AS WELL AS FOR ATTACHMENT TO COLUMNS. FASTENERS TO MASONRY ARE NOT PROVIDED BY NUCOR. H10_E FASTENERS ARE PROVIDED FOR COLUMN ATTACHMENT APPLICATIONS, PRE-DRILLING WILL BE REQUIRED.

GUTTER AND DOWNSPOUT DETAIL AT OVERHANG

REFERENCE GUTTER AND DOWNSPOUT SCHEDULE FOR DOWNSPOUT MARK NUMBERS

LAST REVISION
DATE: 12/04/17
BY: KMC CHK: AES

DETAIL NAME IF APPLICABLE
GA0170.DWG

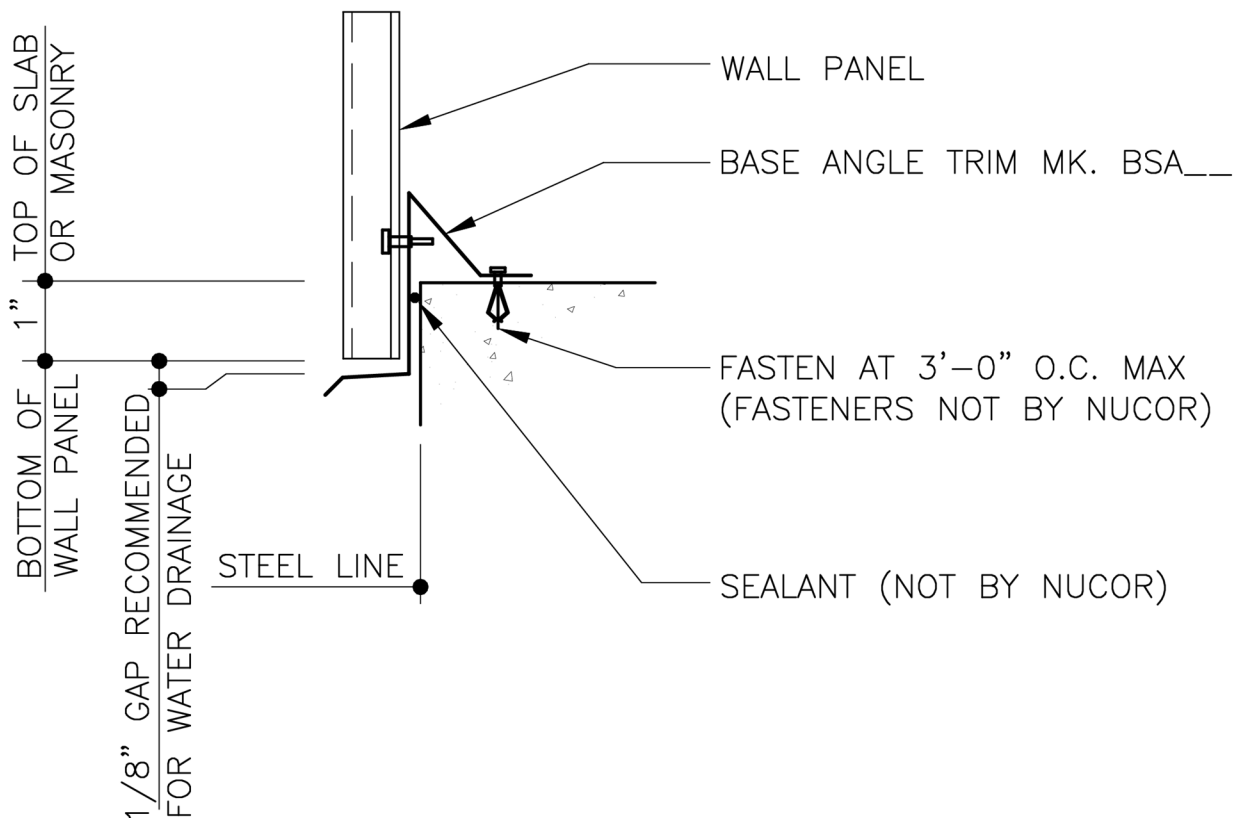
11.5.10



PRODUCT & ENGINEERING MANUAL

BASE CONDITION DETAILS STANDARD FINISHED FLOOR DETAILS GB0010 – BASE ANGLE TRIM

* FIELD MITRE BASE ANGLE AT CORNERS *



BASE TRIM DETAIL

BASE ANGLE TRIM

SEE WALL SHEETING ERECTION NOTES
FOR WALL PANEL FASTENER LOCATIONS

GB0010

LAST REVISION
DATE: 05/13/16
BY: SAA CHK: EGB

DETAIL NAME IF APPLICABLE
GB0010.DWG

11.5.11



PRODUCT & ENGINEERING MANUAL

GB0020 – BASE ANGLE WITH TRIM

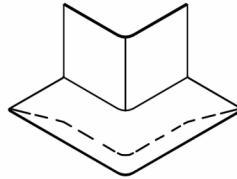
END CLOSURE DETAIL

END CLOSURE MK. H4220 (POLAR WHITE). APPLY TUBE CAULK (H3152) ALL AROUND AND INSERT INTO END OF BSB01 TRIM AT FRAMED OPENINGS, WALKDOORS, AND EXISTING BUILDINGS.



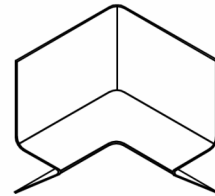
OUTSIDE CORNER TRIM

MK. H4200



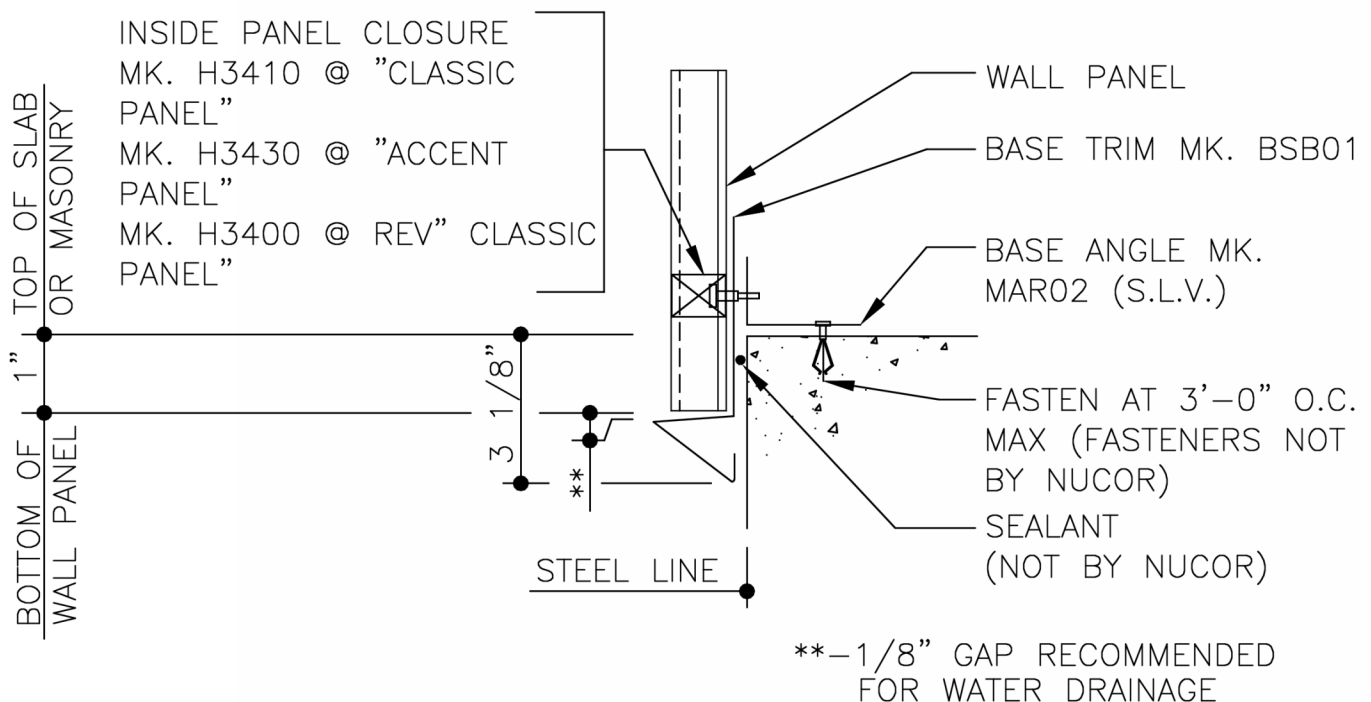
INSIDE CORNER TRIM

MK. H4210



ERECTOR NOTE:

UNTIL WALL PANELS ARE INSTALLED, (3) H10_C SCREWS ARE TO BE USED FOR TEMPORARY INSTALLATION OF THE BASE TRIM.



BASE TRIM DETAIL

BASE TRIM WITH ANGLE
SEE WALL SHEETING ERECTION NOTES
FOR WALL PANEL FASTENER LOCATIONS

GB0020



PRODUCT & ENGINEERING MANUAL

GB0030 – BASE CHANNEL WITH TRIM

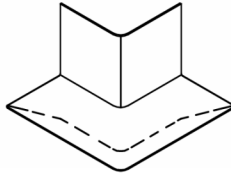
END CLOSURE DETAIL

END CLOSURE MK. H4220 (POLAR WHITE). APPLY TUBE CAULK (H3152) ALL AROUND AND INSERT INTO END OF BSB01 TRIM AT FRAMED OPENINGS, WALKDOORS, AND EXISTING BUILDINGS.



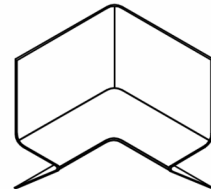
OUTSIDE CORNER TRIM

MK. H4200

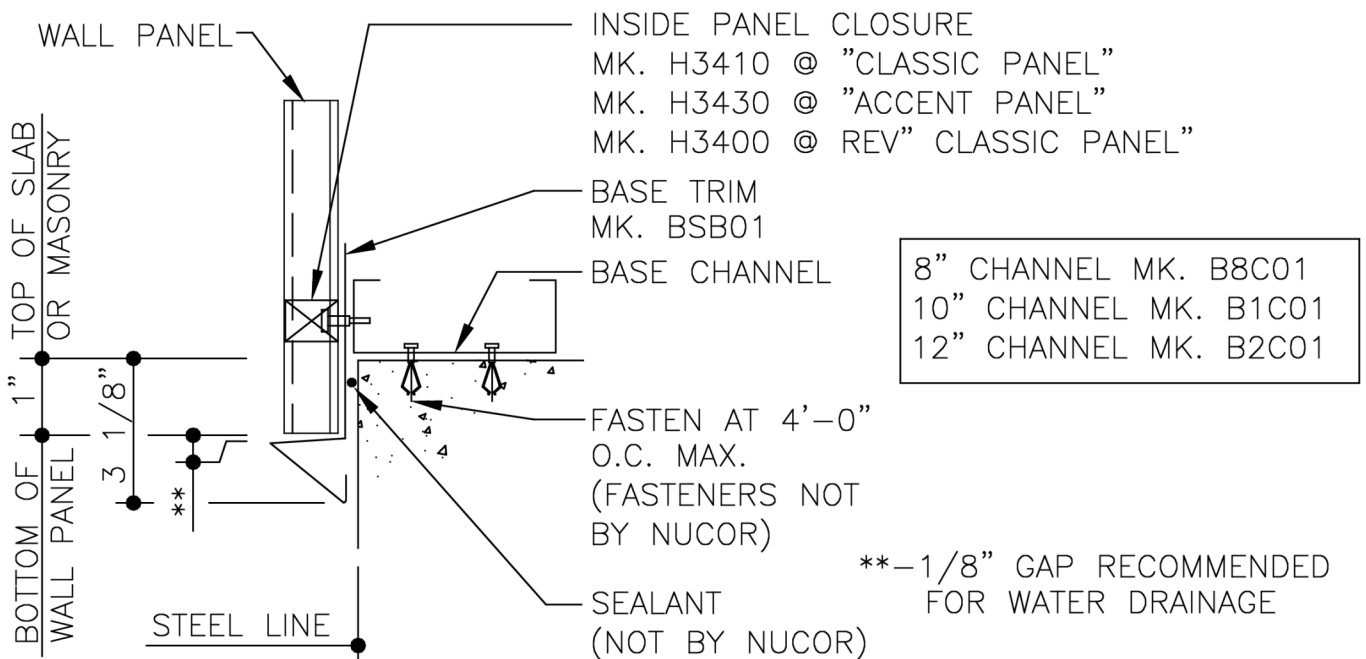


INSIDE CORNER TRIM

MK. H4210



ERECTOR NOTE: UNTIL WALL PANELS ARE INSTALLED, (3) H10_C SCREWS ARE TO BE USED FOR TEMPORARY INSTALLTION OF THE BASE TRIM. PANEL SCREWS MUST ENGAGE THE BASE CHANNEL. FIELD NOTCHING MAY BE REQUIRED AT THE COLUMNS AND CORNERS.



BASE TRIM DETAIL

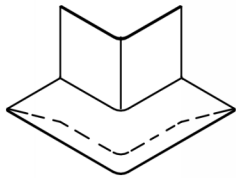
BASE TRIM WITH CHANNEL
SEE WALL SHEETING ERECTION NOTES
FOR WALL PANEL FASTENER LOCATIONS

GB0030

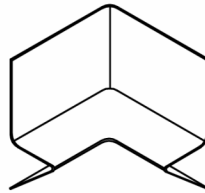


PRODUCT & ENGINEERING MANUAL

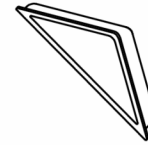
GB0031 – HOT-ROLLED BASE CHANNEL WITH TRIM



OUTSIDE
CORNER TRIM
MK. H4200

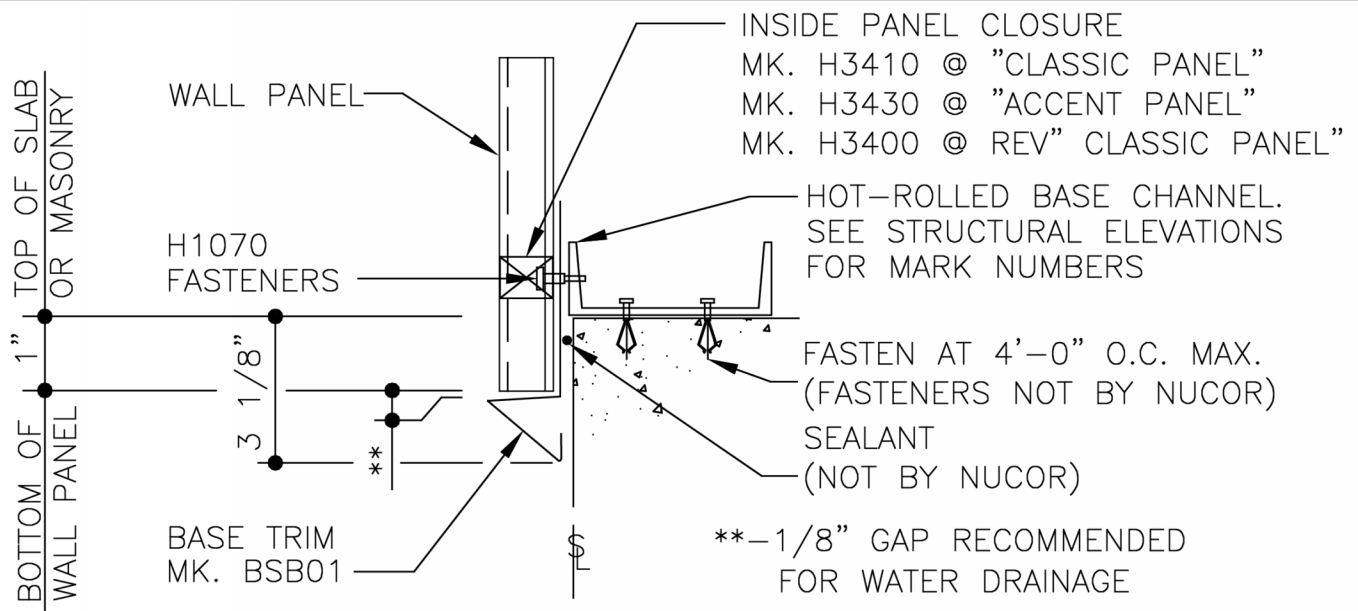


INSIDE
CORNER TRIM
MK. H4210



END CLOSURE MK. H4220 (POLAR WHITE). APPLY TUBE CAULK (MK. H3152) ALL AROUND AND INSERT INTO THE END OF THE BSB01 TRIM AT FRAMED OPENINGS.

ERECTOR NOTE: UNTIL PANELS ARE INSTALLED, (3) H1070 SCREWS ARE TO BE USED FOR TEMPORARY INSTALLATION OF BASE TRIM. PRE-DRILL CHANNEL IF THICKER THAN 1/2".



BASE TRIM DETAIL

BASE TRIM WITH HOT-ROLLED CHANNEL
SEE WALL SHEETING ERECTION NOTES
FOR WALL PANEL FASTENER LOCATIONS

GB0031

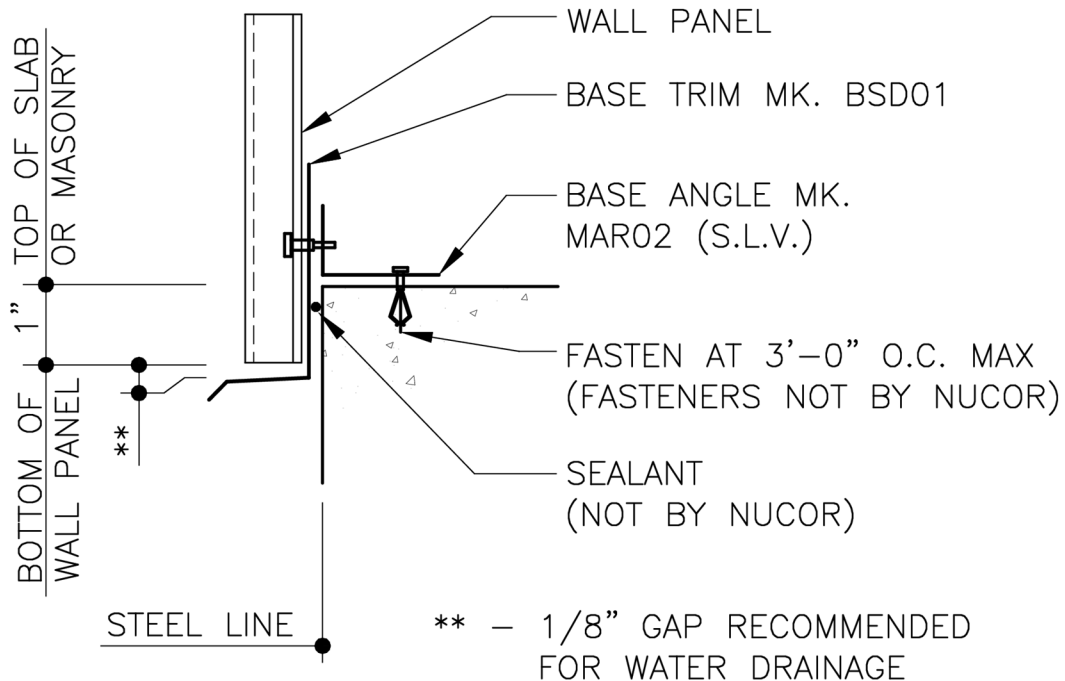


PRODUCT & ENGINEERING MANUAL

GB0040 – BASE ANGLE WITH ALTERNATE TRIM

ERECTOR NOTE:

UNTIL WALL PANELS ARE INSTALLED, (3) H10_C SCREWS ARE TO BE USED FOR TEMPORARY INSTALLATION OF THE BASE TRIM.



BASE TRIM DETAIL

BASE TRIM WITH ANGLE

SEE WALL SHEETING ERECTION NOTES
FOR WALL PANEL FASTENER LOCATIONS

GB0040

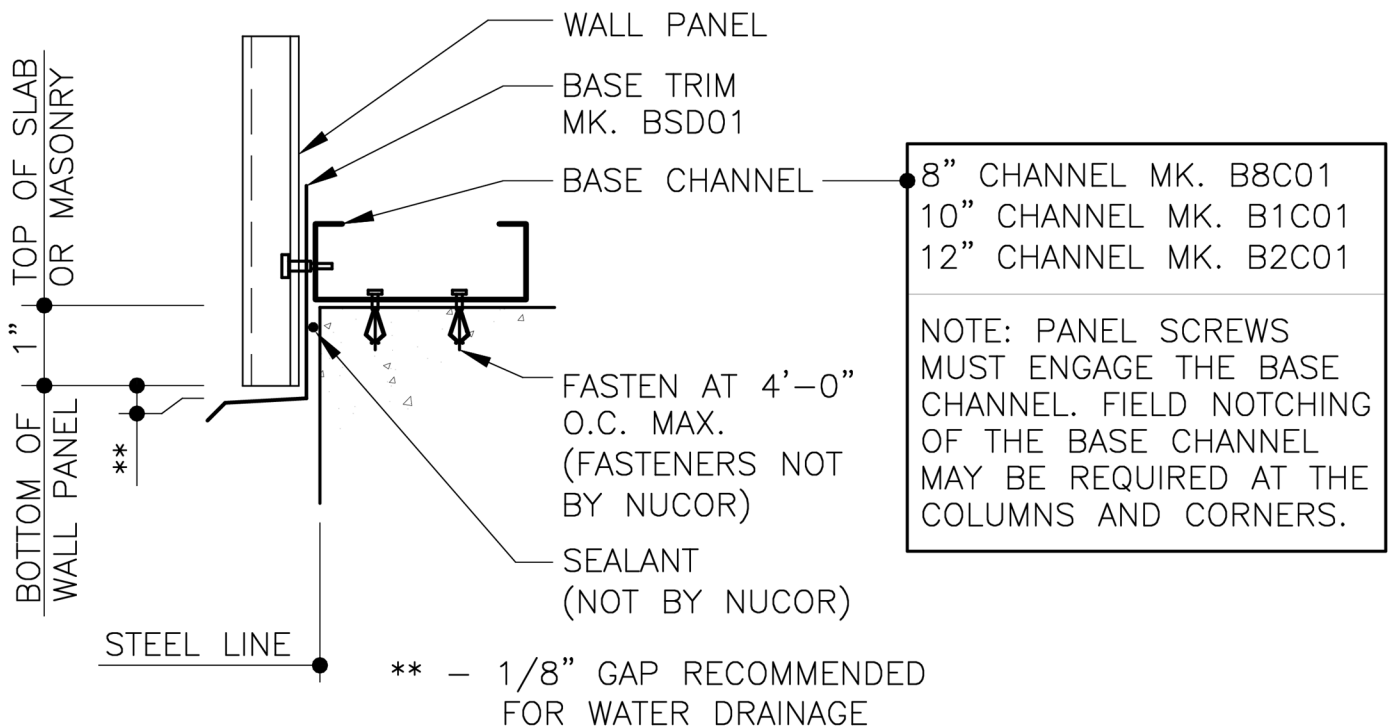


PRODUCT & ENGINEERING MANUAL

GB0050 – BASE CHANNEL WITH ALTERNATE TRIM

ERECTOR NOTE:

UNTIL WALL PANELS ARE INSTALLED, (3) H10_C SCREWS ARE TO BE USED FOR TEMPORARY INSTALLATION OF THE BASE TRIM.



BASE TRIM DETAIL

BASE TRIM WITH CHANNEL

SEE WALL SHEETING ERECTION NOTES
FOR WALL PANEL FASTENER LOCATIONS

GB0050

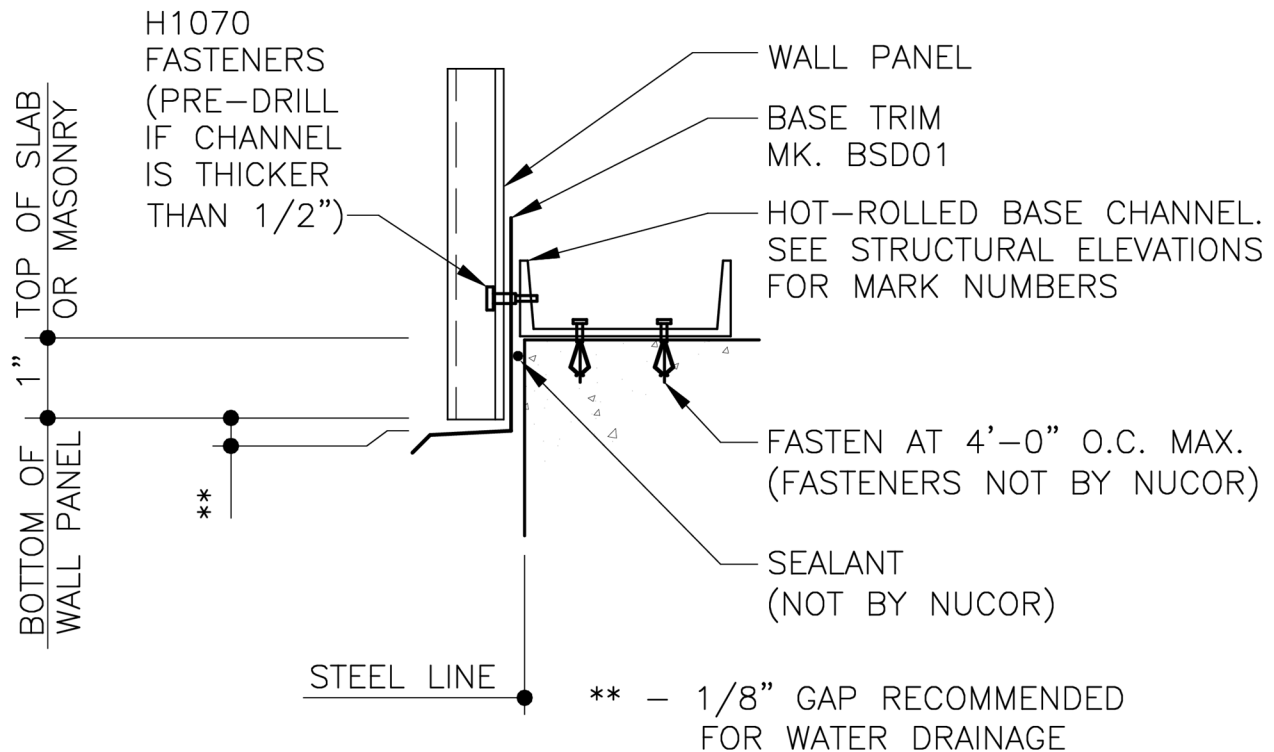


PRODUCT & ENGINEERING MANUAL

GB0051 – HOT-ROLLED BASE CHANNEL WITH ALTERNATE TRIM

ERECTOR NOTE:

UNTIL WALL PANELS ARE INSTALLED, (3) H1070 SCREWS ARE TO BE USED FOR TEMPORARY INSTALLATION OF THE BASE TRIM.



BASE TRIM DETAIL

BASE TRIM WITH HOT-ROLLED CHANNEL
SEE WALL SHEETING ERECTION NOTES
FOR WALL PANEL FASTENER LOCATIONS

GB0051



PRODUCT & ENGINEERING MANUAL

STANDARD ABOVE FINISHED FLOOR DETAILS GB0100 – BASE ANGLE WITH TRIM AFF

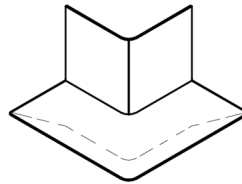
END CLOSURE DETAIL

END CLOSURE MK. H4220 (POLAR WHITE). APPLY TUBE CAULK (H3152) ALL AROUND AND INSERT INTO END OF BSC01TRIM AT FRAMED OPENINGS, WALKDOORS, AND EXISTING BUILDINGS.



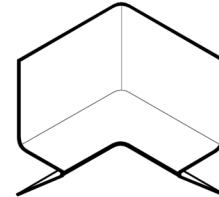
OUTSIDE CORNER TRIM

MK. H4200



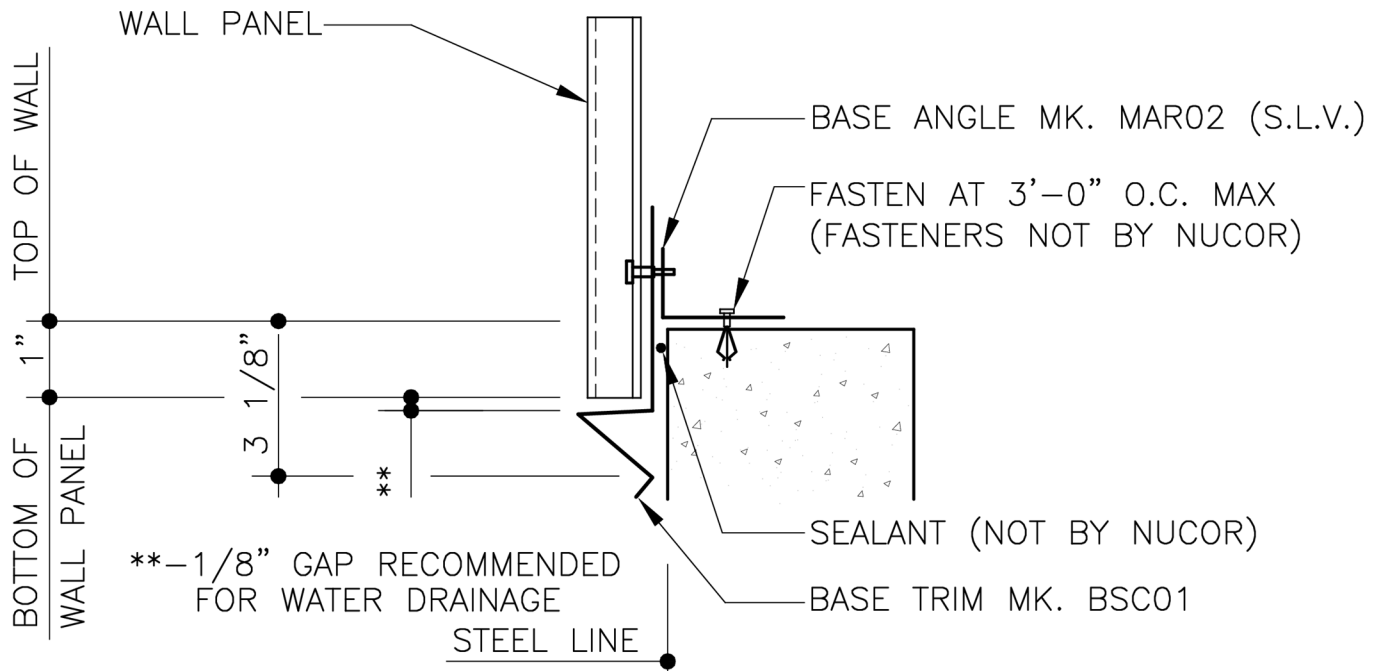
INSIDE CORNER TRIM

MK. H4210



ERECTOR NOTE:

UNTIL WALL PANELS ARE INSTALLED, (3) H10_C SCREWS ARE TO BE USED FOR TEMPORARY INSTALLATION OF THE BASE TRIM.



BASE DETAIL AT MASONRY WALL

BASE TRIM WITH ANGLE

SEE WALL SHEETING ERECTION NOTES FOR WALL PANEL FASTENER LOCATIONS

GB0100



PRODUCT & ENGINEERING MANUAL

GB0110 – BASE CHANNEL WITH TRIM AFF

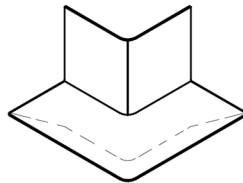
END CLOSURE DETAIL

END CLOSURE MK. H4220 (POLAR WHITE). APPLY TUBE CAULK (H3152) ALL AROUND AND INSERT INTO END OF BSC01 TRIM AT FRAMED OPENINGS, WALKDOORS, AND EXISTING BUILDINGS.



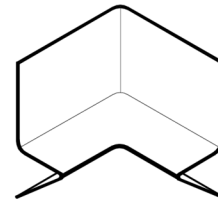
OUTSIDE CORNER TRIM

MK. H4200



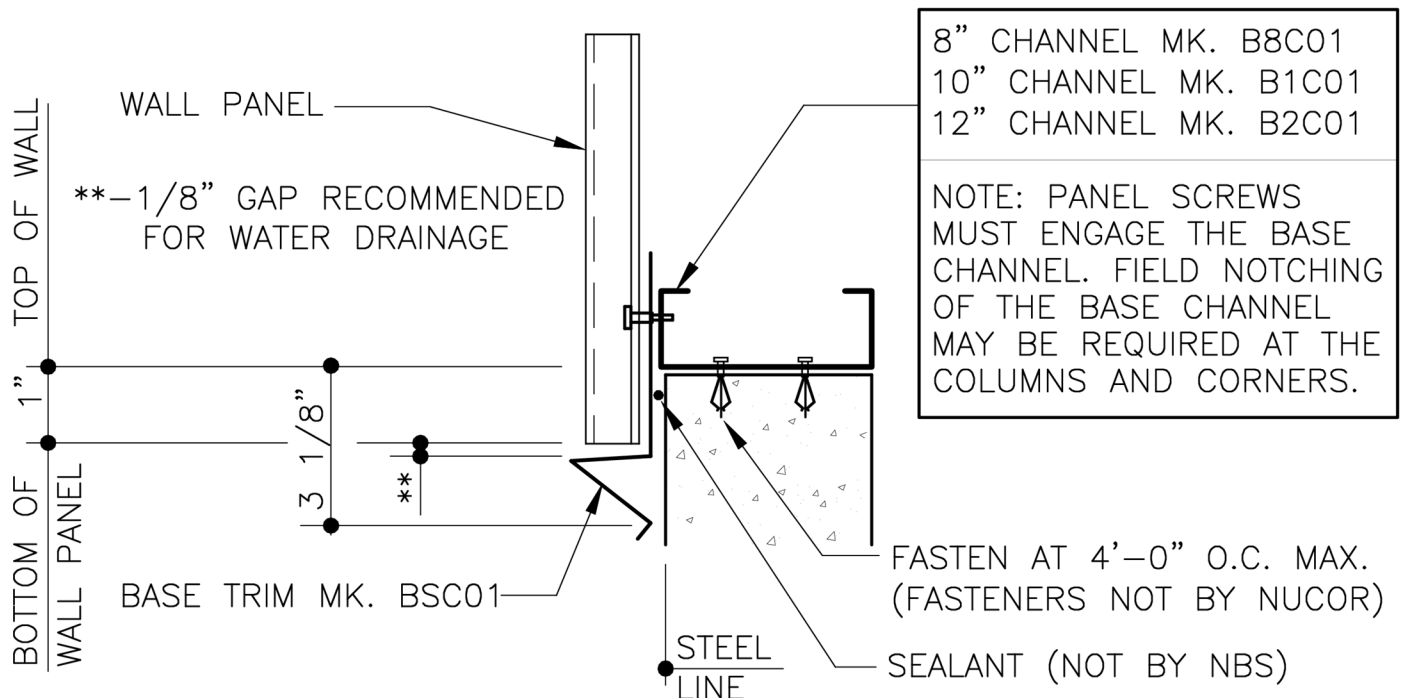
INSIDE CORNER TRIM

MK. H4210



ERECTOR NOTE:

UNTIL WALL PANELS ARE INSTALLED, (3) H10_C SCREWS ARE TO BE USED FOR TEMPORARY INSTALLATION OF THE BASE TRIM.



BASE DETAIL AT MASONRY WALL

BASE TRIM WITH BASE CHANNEL

SEE WALL SHEETING ERECTION NOTES FOR WALL PANEL FASTENER LOCATIONS

GB0110



PRODUCT & ENGINEERING MANUAL

GB0120 – HOT-ROLLED BASE CHANNEL WITH TRIM AFF

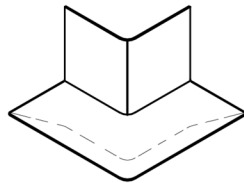
END CLOSURE DETAIL

END CLOSURE MK. H4220 (POLAR WHITE). APPLY TUBE CAULK (H3152) ALL AROUND AND INSERT INTO END OF BSC01 TRIM AT FRAMED OPENINGS, WALKDOORS, AND EXISTING BUILDINGS.



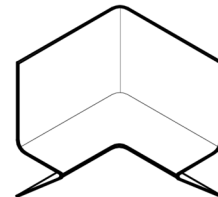
OUTSIDE CORNER TRIM

MK. H4200



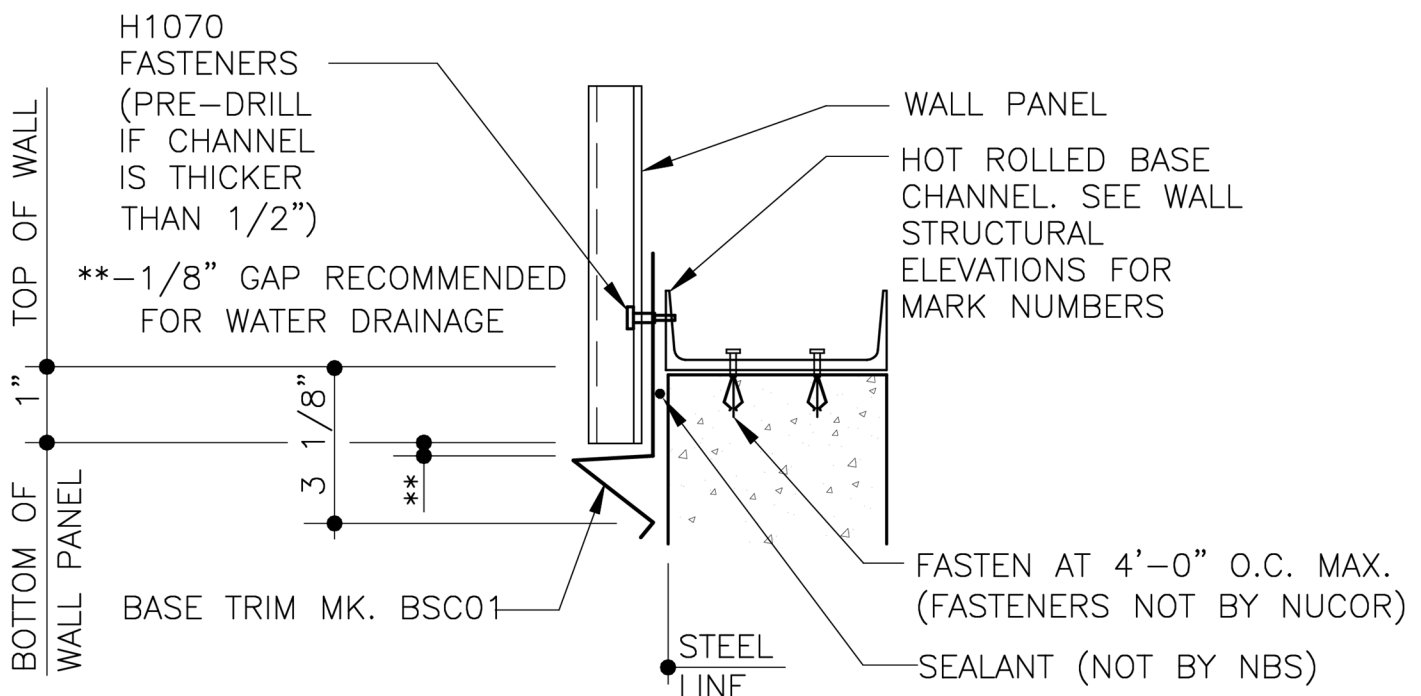
INSIDE CORNER TRIM

MK. H4210



ERECTOR NOTE:

UNTIL WALL PANELS ARE INSTALLED, (3) H1070 SCREWS ARE TO BE USED FOR TEMPORARY INSTALLATION OF THE BASE TRIM.



BASE DETAIL AT MASONRY WALL

BASE TRIM WITH HOT ROLLED CHANNEL
SEE WALL SHEETING ERECTION NOTES
FOR WALL PANEL FASTENER LOCATIONS

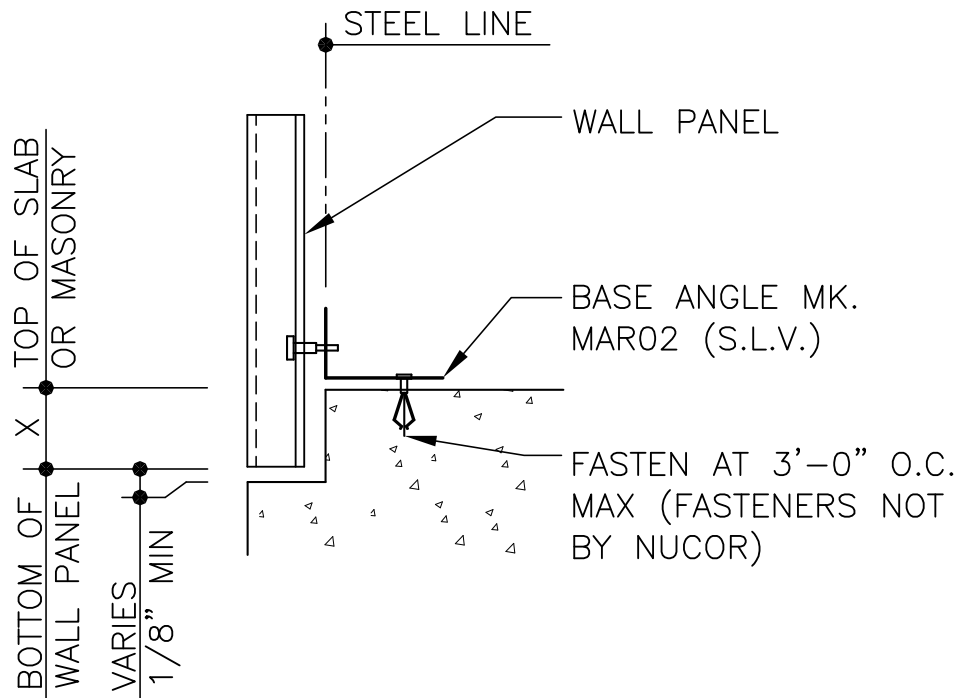
GB0120



PRODUCT & ENGINEERING MANUAL

STANDARD CONCRETE NOTCH DETAILS

GB0200 – CONCRETE NOTCH WITH BASE ANGLE AND PANEL



WALL PANEL BASE DETAIL

CONCRETE NOTCH WITH BASE ANGLE AND PANEL
SEE WALL SHEETING ERECTION NOTES
FOR WALL PANEL FASTENER LOCATIONS

GB0200

LAST REVISION
DATE: 03/13/15
BY: AK CHK: EGB

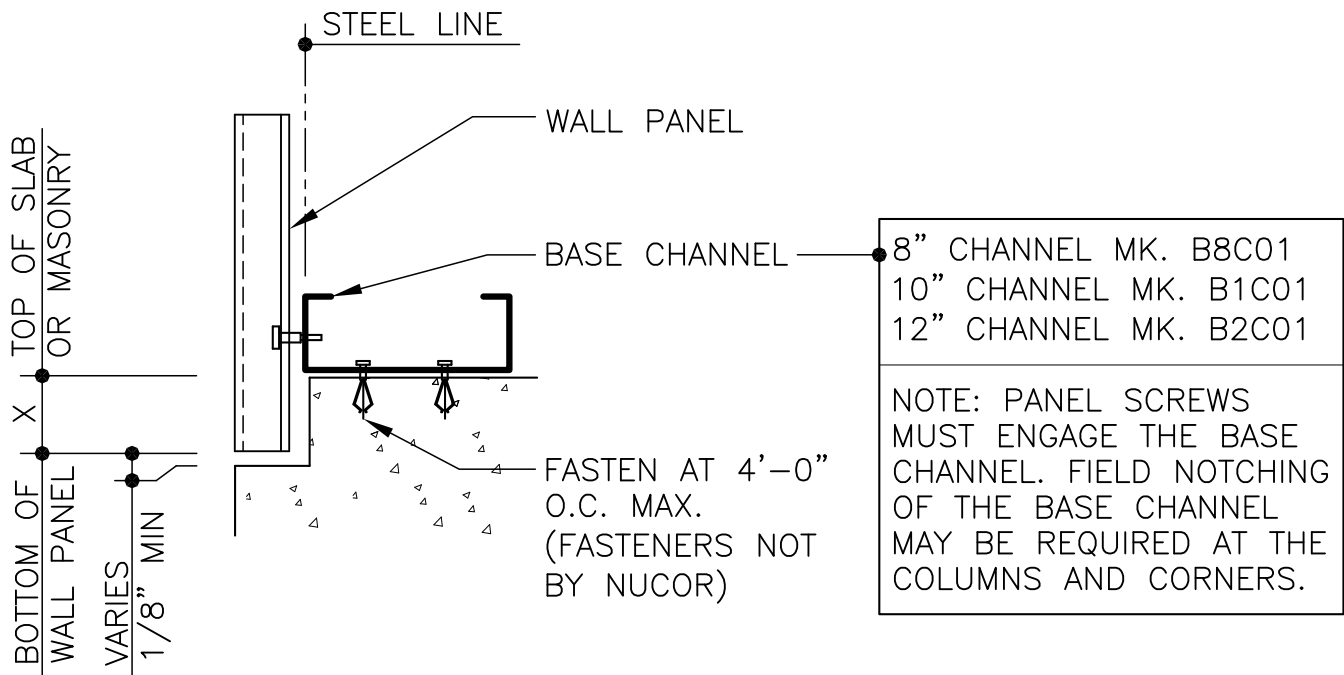
DETAIL NAME IF APPLICABLE
GB0200.DWG

11.5.21



PRODUCT & ENGINEERING MANUAL

GB0210 – CONCRETE NOTCH WITH BASE CHANNEL AND PANEL



WALL PANEL BASE DETAIL

CONCRETE NOTCH WITH BASE CHANNEL AND PANEL
SEE WALL SHEETING ERECTION NOTES
FOR WALL PANEL FASTENER LOCATIONS

GB0210

LAST REVISION
DATE: 03/13/15
BY: AK CHK: EGB

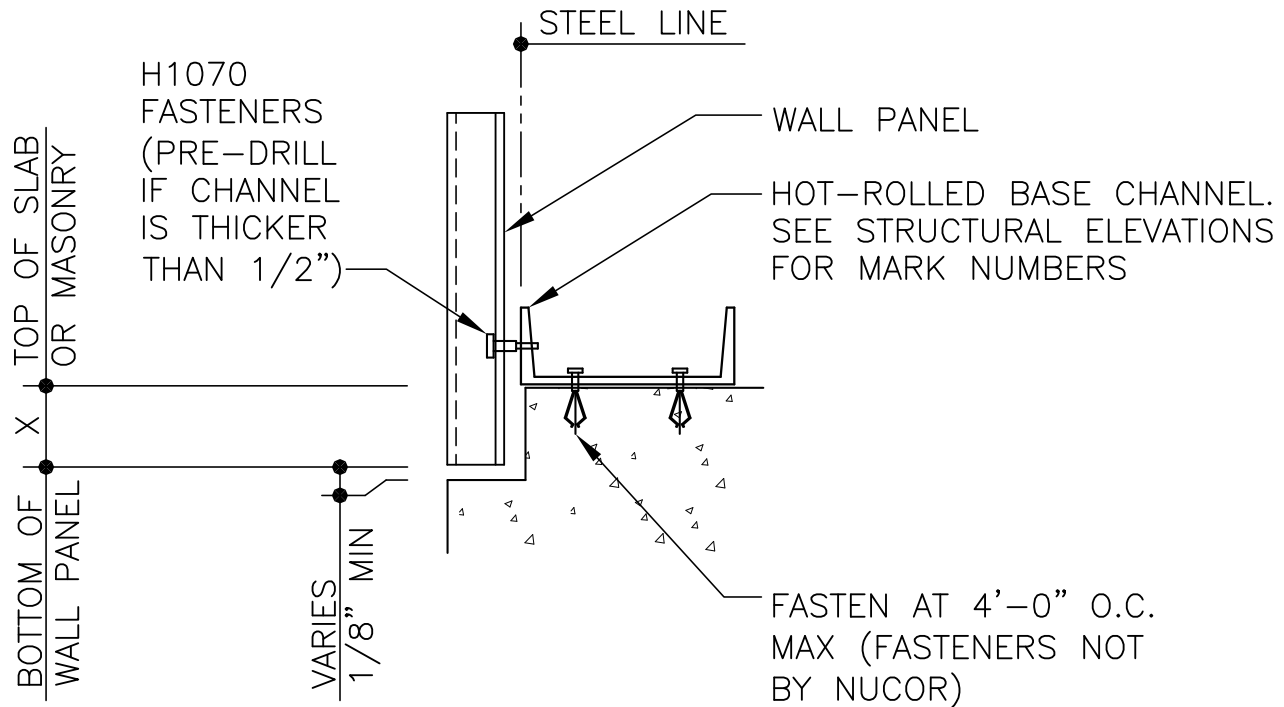
DETAIL NAME IF APPLICABLE
GB0210.DWG

11.5.22



PRODUCT & ENGINEERING MANUAL

GB0220 – CONCRETE NOTCH WITH HOT-ROLLED BASE CHANNEL AND PANEL



WALL PANEL BASE DETAIL

CONCRETE NOTCH WITH HR BASE CHANNEL AND PANEL
SEE WALL SHEETING ERECTION NOTES
FOR WALL PANEL FASTENER LOCATIONS

GB0220

LAST REVISION
DATE: 03/13/15
BY: AK CHK: EGB

DETAIL NAME IF APPLICABLE
GB0220.DWG

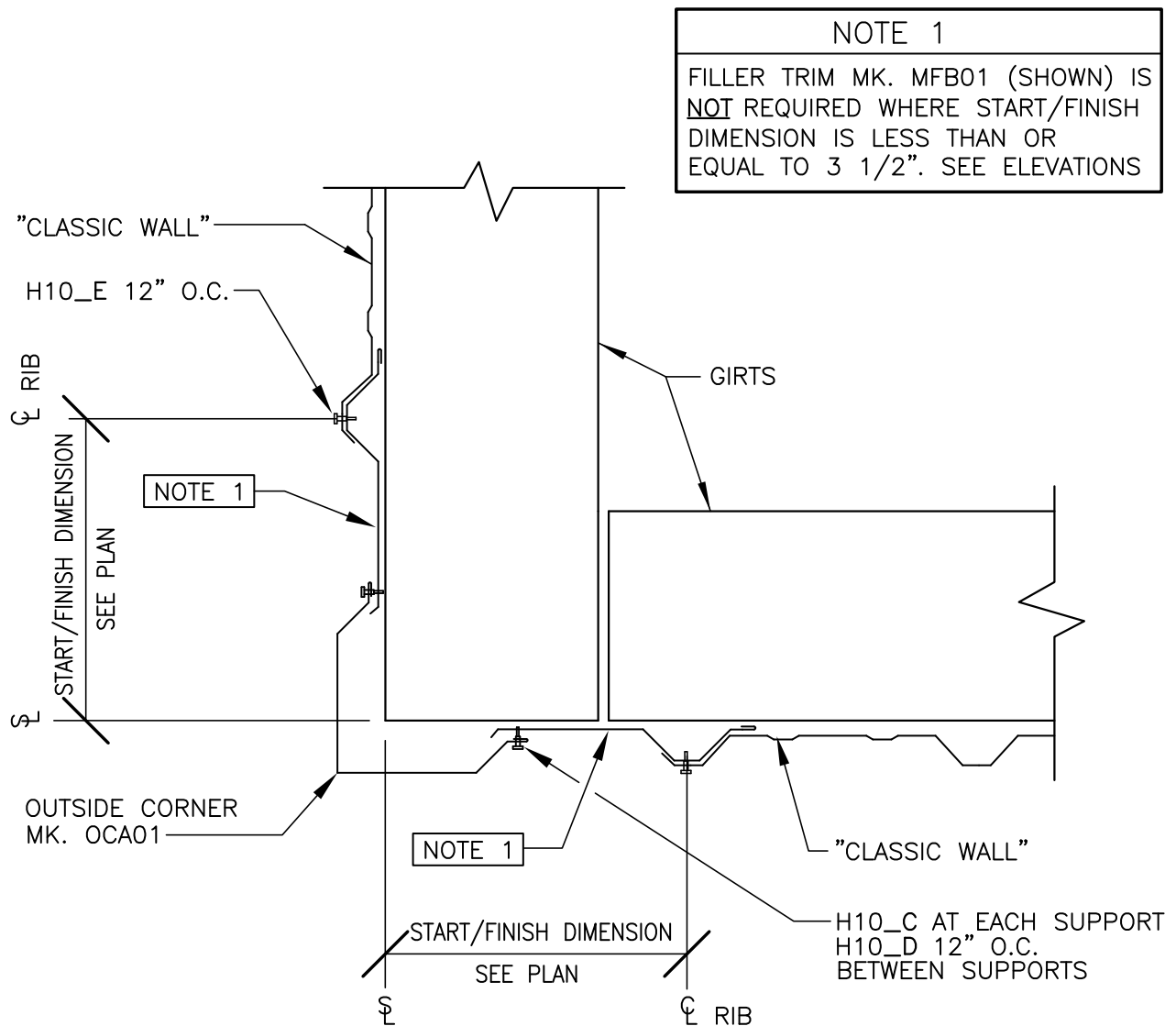
11.5.23



PRODUCT & ENGINEERING MANUAL

CORNER DETAILS

GC0021 – OUTSIDE CORNER @ NUCOR CLASSIC WALL™ PANEL



OUTSIDE CORNER DETAIL

"CLASSIC WALL"

GC0021

LAST REVISION
DATE: 04/14/14
BY: AES CHK: RJF

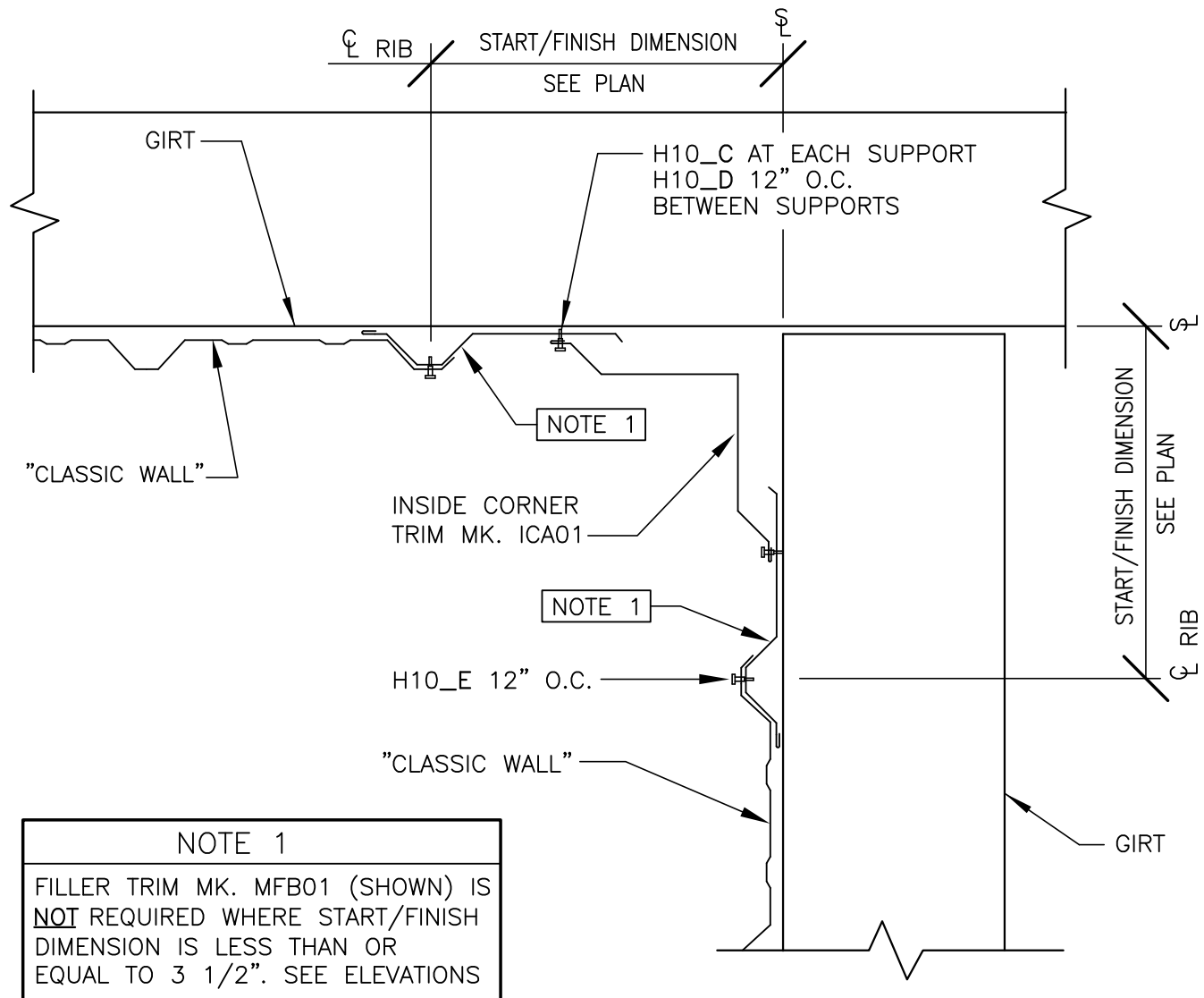
DETAIL NAME IF APPLICABLE
GC0021.DWG

11.5.24



PRODUCT & ENGINEERING MANUAL

GC0051 – INSIDE CORNER @ NUCOR CLASSIC WALL™ PANEL



NOTE 1

FILLER TRIM MK. MFB01 (SHOWN) IS **NOT** REQUIRED WHERE START/FINISH DIMENSION IS LESS THAN OR EQUAL TO 3 1/2". SEE ELEVATIONS

INSIDE CORNER DETAIL

"CLASSIC WALL"

GC0051

LAST REVISION
DATE: 04/14/14
BY: AES CHK: RJF

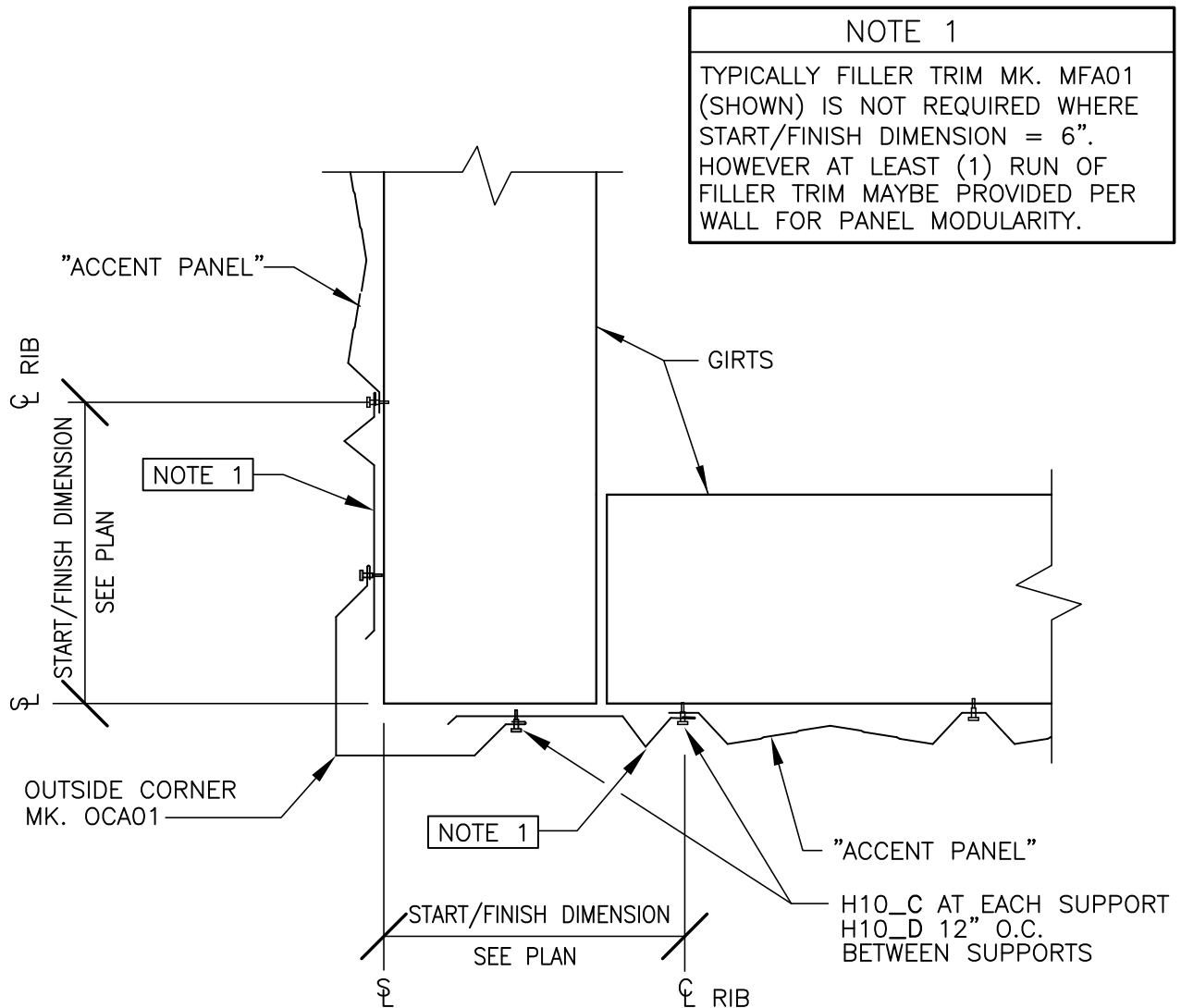
DETAIL NAME IF APPLICABLE
GC0051.DWG

11.5.25



PRODUCT & ENGINEERING MANUAL

GC0011 – OUTSIDE CORNER @ NUCOR ACCENT WALL™ PANEL



OUTSIDE CORNER DETAIL

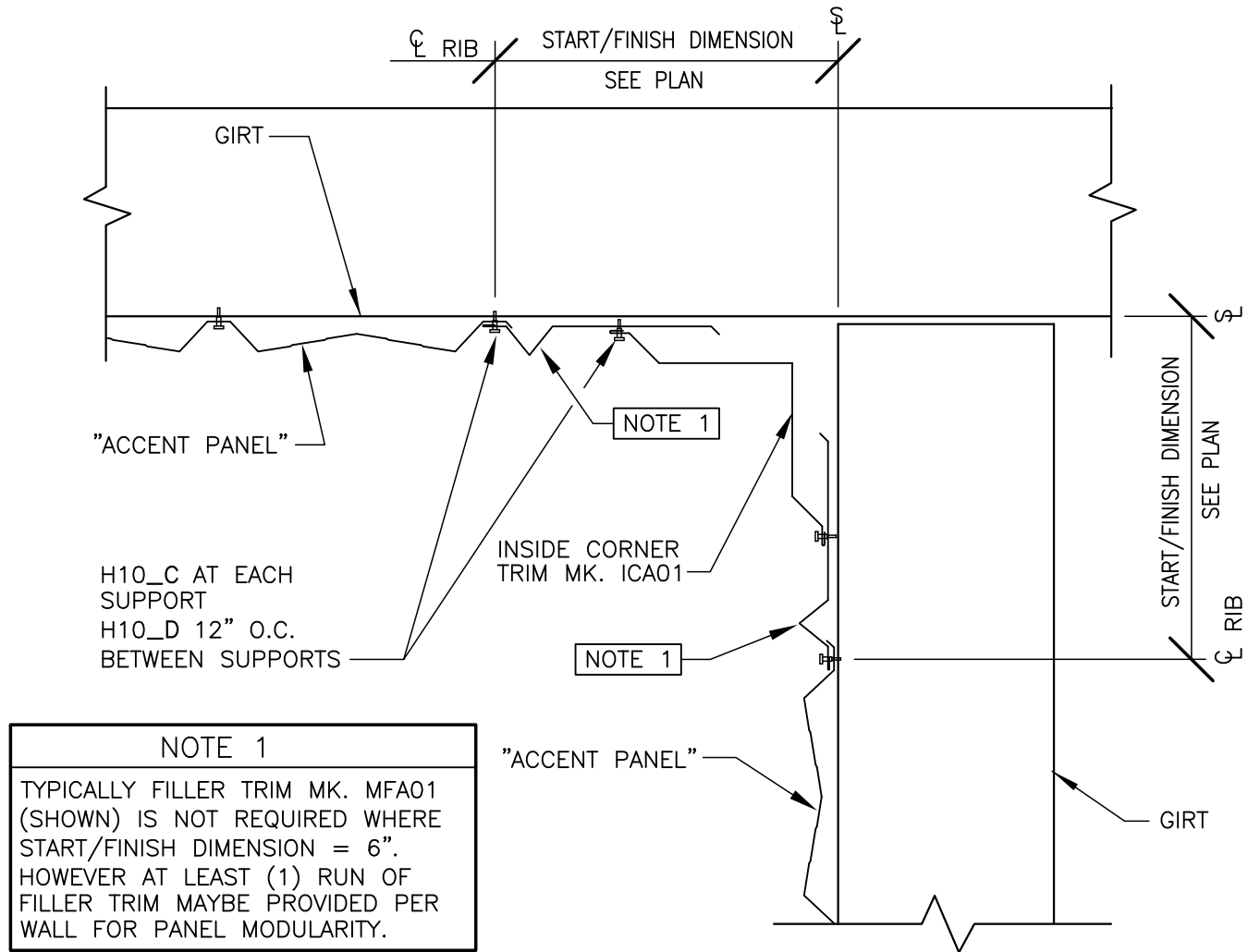
"ACCENT PANEL"

GC0011



PRODUCT & ENGINEERING MANUAL

GC0041 – INSIDE CORNER @ NUCOR ACCENT WALL™ PANEL



INSIDE CORNER DETAIL

"ACCENT PANEL"

GC0041

LAST REVISION
DATE: 04/14/14
BY: AES CHK: RJF

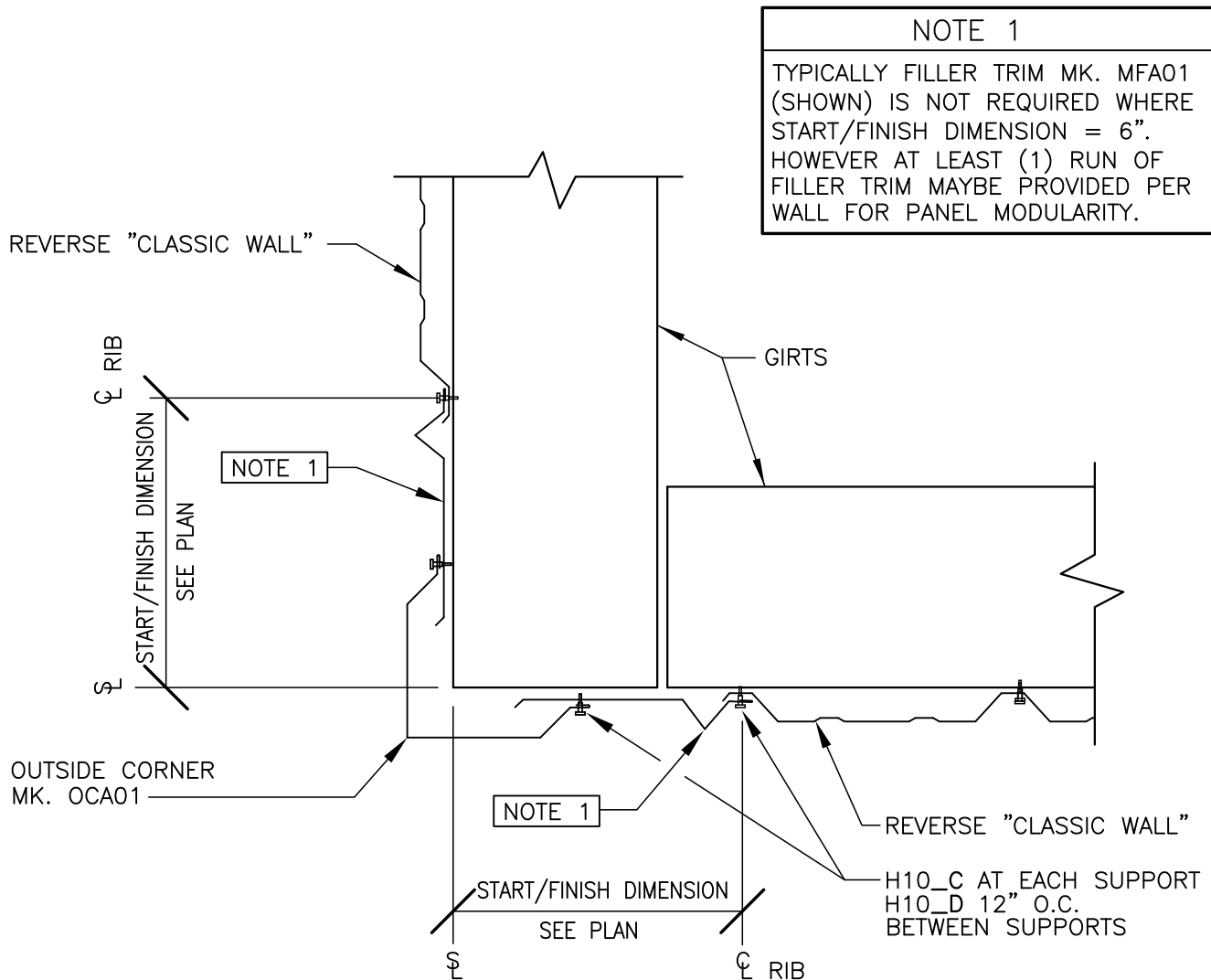
DETAIL NAME IF APPLICABLE
GC0041.DWG

11.5.27



PRODUCT & ENGINEERING MANUAL

GC0031 – OUTSIDE CORNER @ NUCOR REVERSE CLASSIC WALL™ PANEL



OUTSIDE CORNER DETAIL

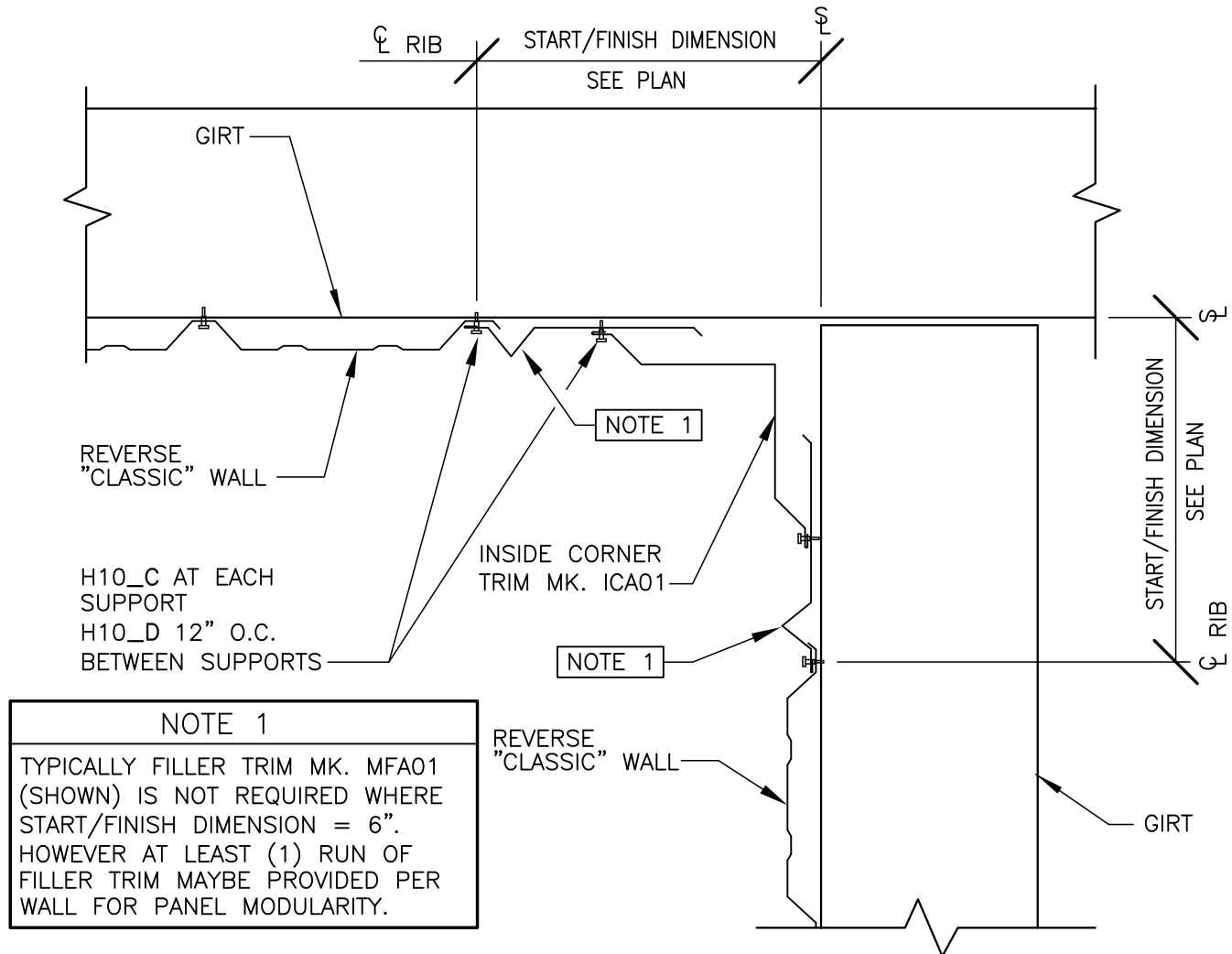
REVERSE "CLASSIC WALL"

GC0031



PRODUCT & ENGINEERING MANUAL

GC0061 – INSIDE CORNER @ NUCOR REVERSE CLASSIC WALL™ PANEL



INSIDE CORNER DETAIL

REVERSE "CLASSIC WALL"

GC0061

LAST REVISION
DATE: 04/14/14
BY: AES CHK: RJF

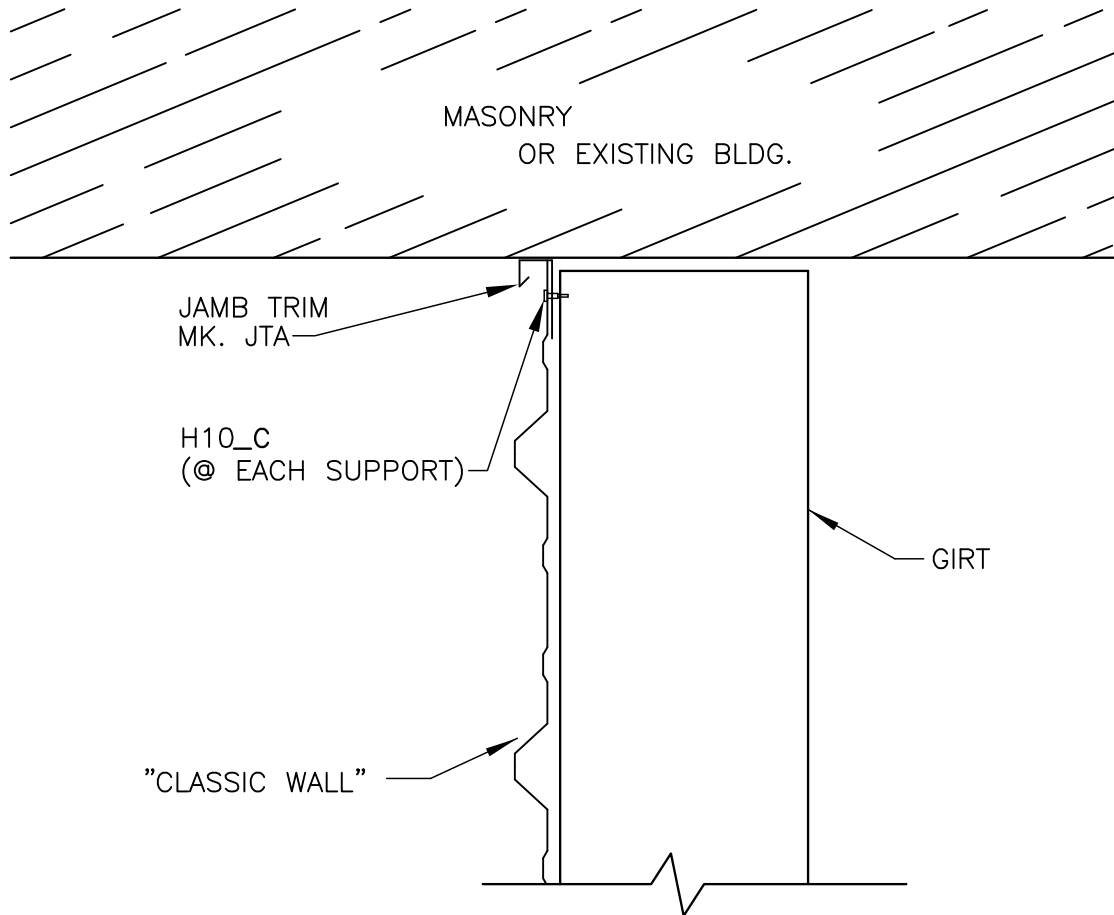
DETAIL NAME IF APPLICABLE
GC0061.DWG

11.5.29



PRODUCT & ENGINEERING MANUAL

GC0081 – INSIDE TRANSITION CORNER WITH “CLASSIC WALL” @ MASONRY WALL OR EXISTING BUILDING (JAMB TRIM)



INSIDE CORNER TRANSITION DETAIL

"CLASSIC WALL" @ MASONRY OR EXISTING BUILDING

GC0081

LAST REVISION
DATE: 04/14/14
BY: AES CHK: RJF

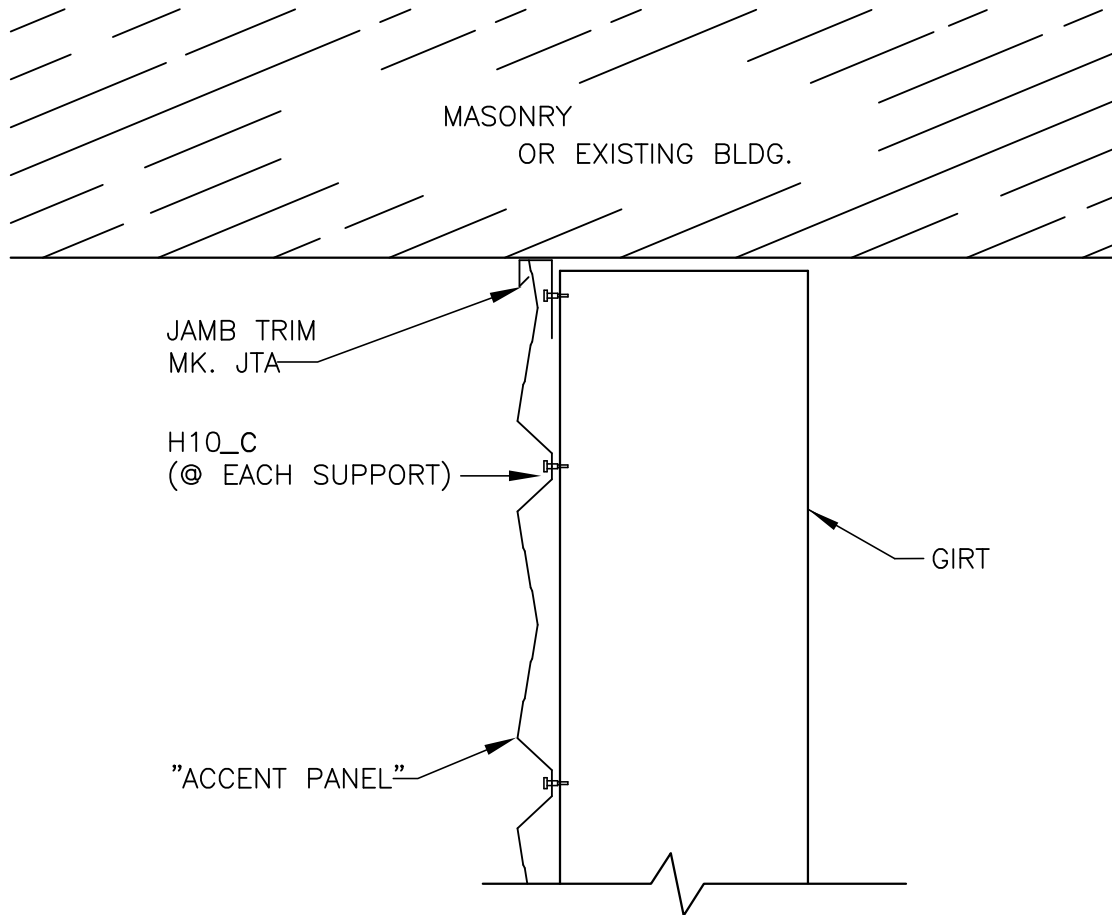
DETAIL NAME IF APPLICABLE
GC0081.DWG

11.5.30



PRODUCT & ENGINEERING MANUAL

GC0071 – INSIDE TRANSITION CORNER WITH ACCENT WALL PANEL @ MASONRY WALL OR EXISTING BUILDING (JAMB TRIM)



INSIDE CORNER TRANSITION DETAIL

"ACCENT PANEL" @ MASONRY OR EXISTING BUILDING

GC0071

LAST REVISION
DATE: 04/14/14
BY: AES CHK: RJF

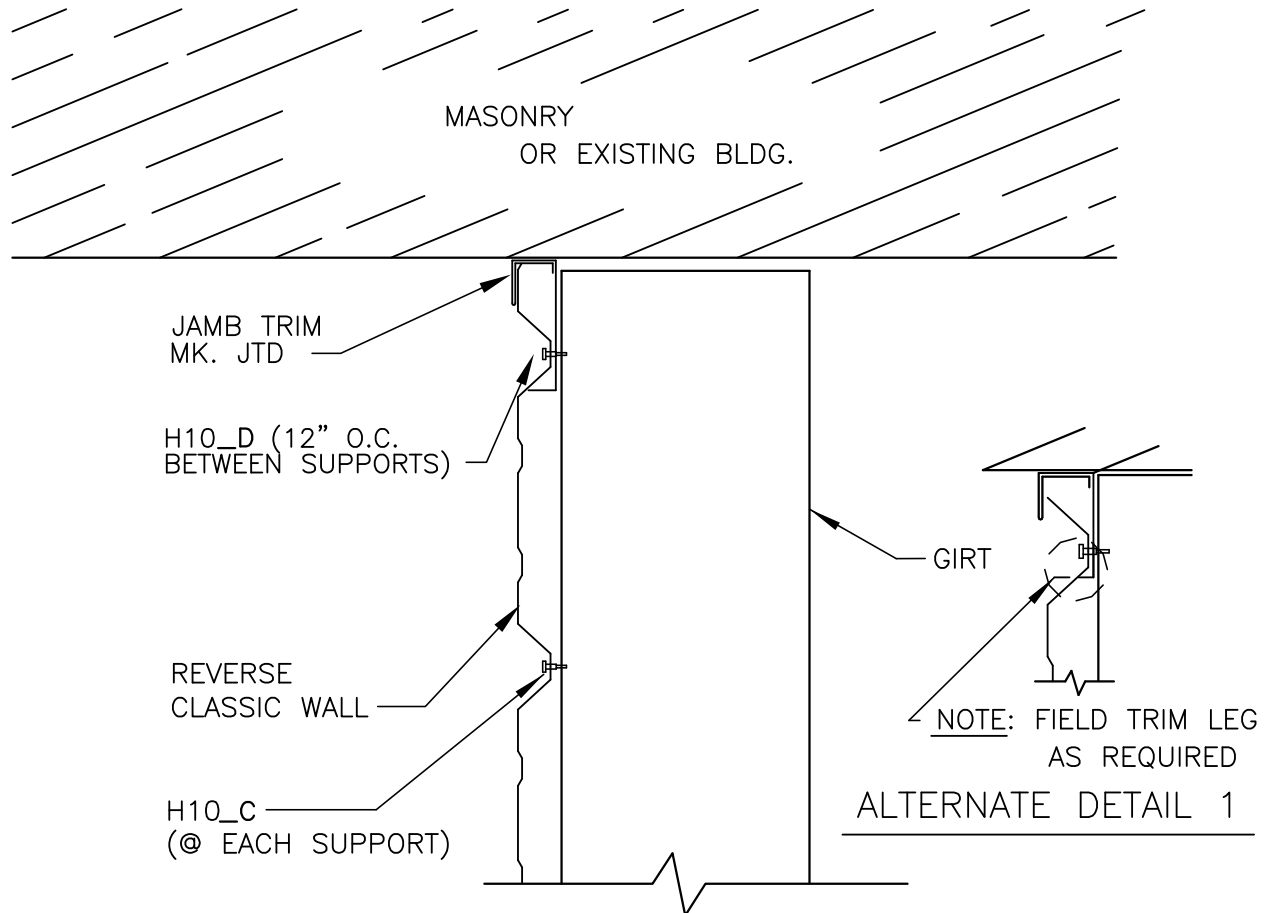
DETAIL NAME IF APPLICABLE
GC0071.DWG

11.5.31



PRODUCT & ENGINEERING MANUAL

GC0091 – INSIDE TRANSITION CORNER WITH REVERSE “CLASSIC WALL” @ MASONRY WALL OR EXISTING BUILDING (JAMB TRIM)



INSIDE CORNER TRANSITION DETAIL

"REVERSE CLASSIC" WALL (JAMB TRIM) @ MASONRY OR EXISTING BLDG

GC0091

LAST REVISION
DATE: 04/14/14
BY: AES CHK: RJF

DETAIL NAME IF APPLICABLE
GC0091.DWG

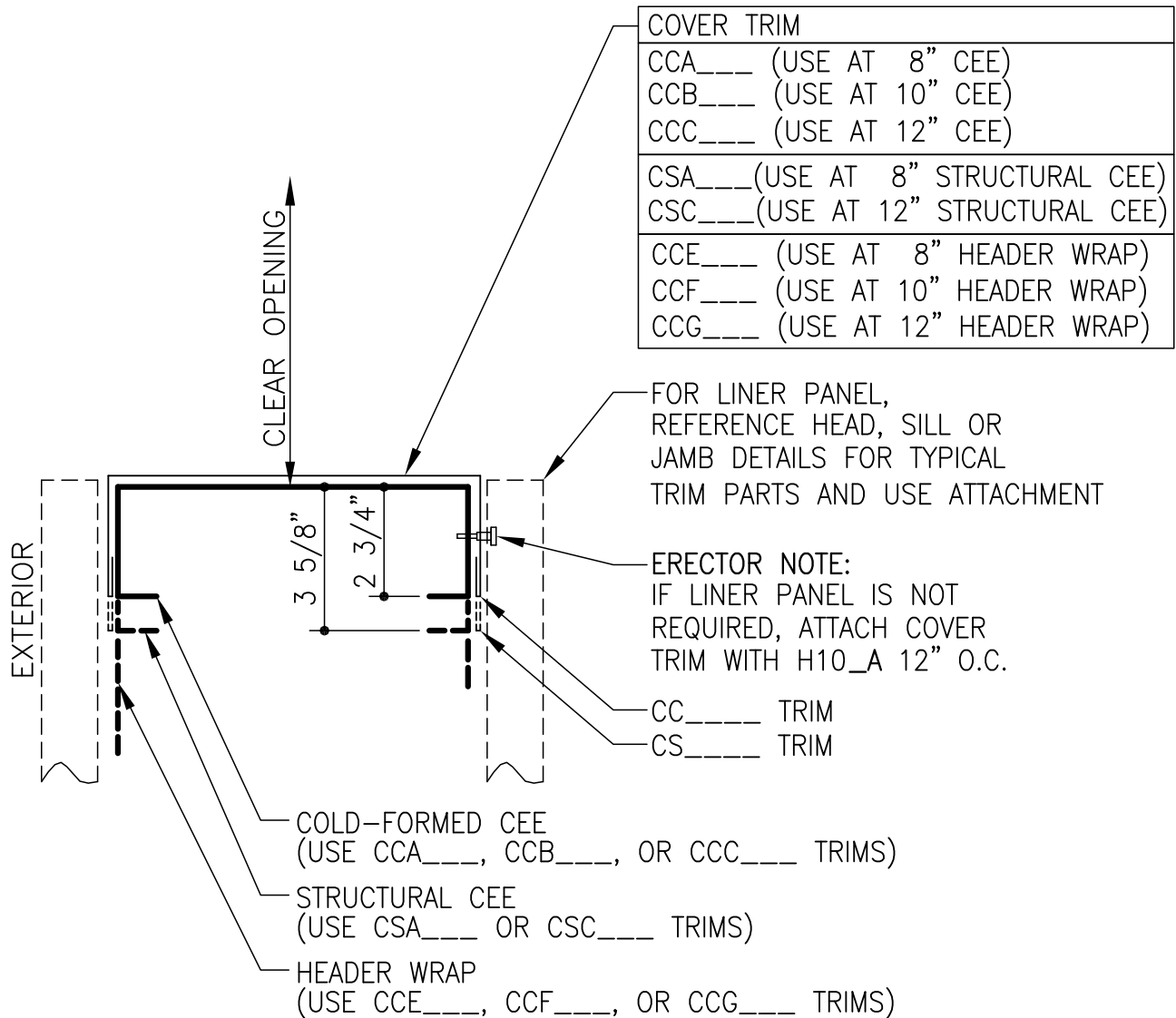
11.5.32



PRODUCT & ENGINEERING MANUAL

FRAMED OPENING DETAILS

GD0005 – CEE CHANNEL COVER TRIM DETAIL



FRAMED OPENING COVER TRIM DETAIL

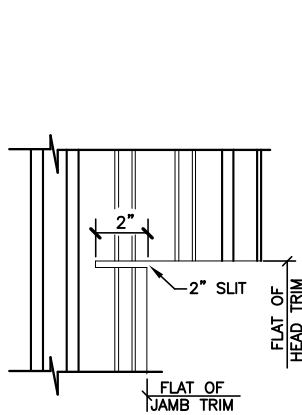
SILL SHOWN, HEAD AND JAMBS SIMILAR

GD0005

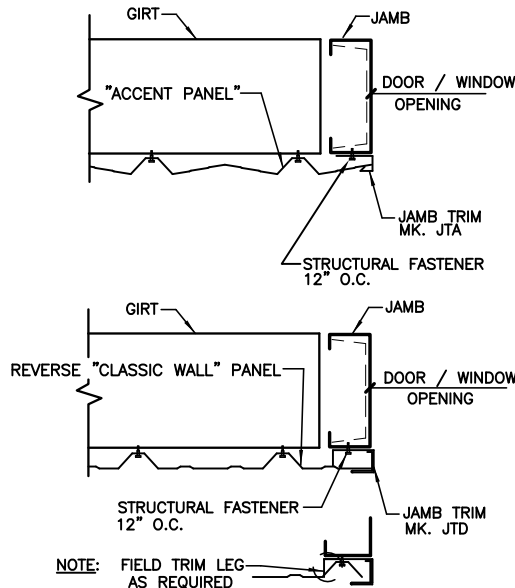


PRODUCT & ENGINEERING MANUAL

GD0040 – DOOR FRAMED OPENING TRIM



PANEL SLIT
STEP 3

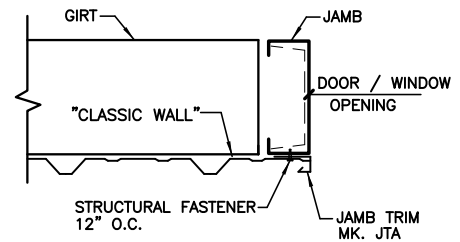


NOTE: FIELD TRIM LEG
AS REQUIRED

ALTERNATE DETAIL 1

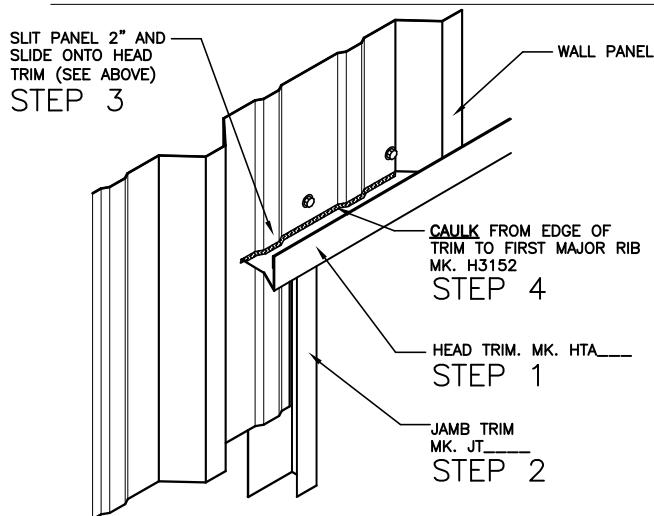
FASTENER KEY

STITCH FASTENER = H106A
STRUCTURAL FASTENER = H104B
WITH COLD-FORM
STRUCTURAL FASTENER = H1070
WITH HOT-ROLLED



JAMB TRIM
STEP 2

NOTE: FIELD CUT PANELS AS REQUIRED

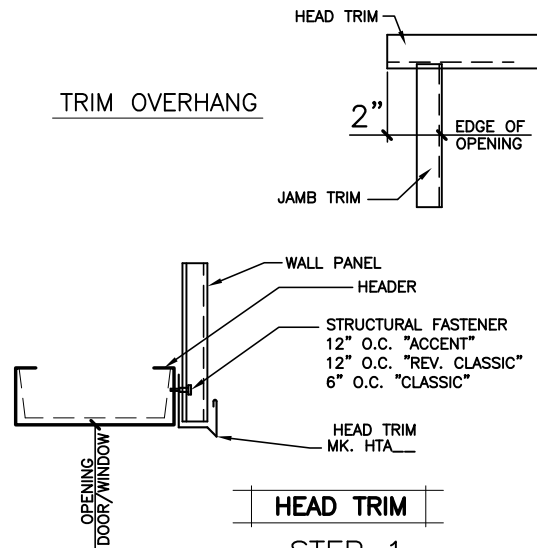


DOOR FRAMED OPENING TRIM DETAIL

FOR ALL STANDARD WALL PANEL TYPES
LEFT HAND SHOWN, RIGHT HAND SIMILAR

GD0040

TRIM OVERHANG

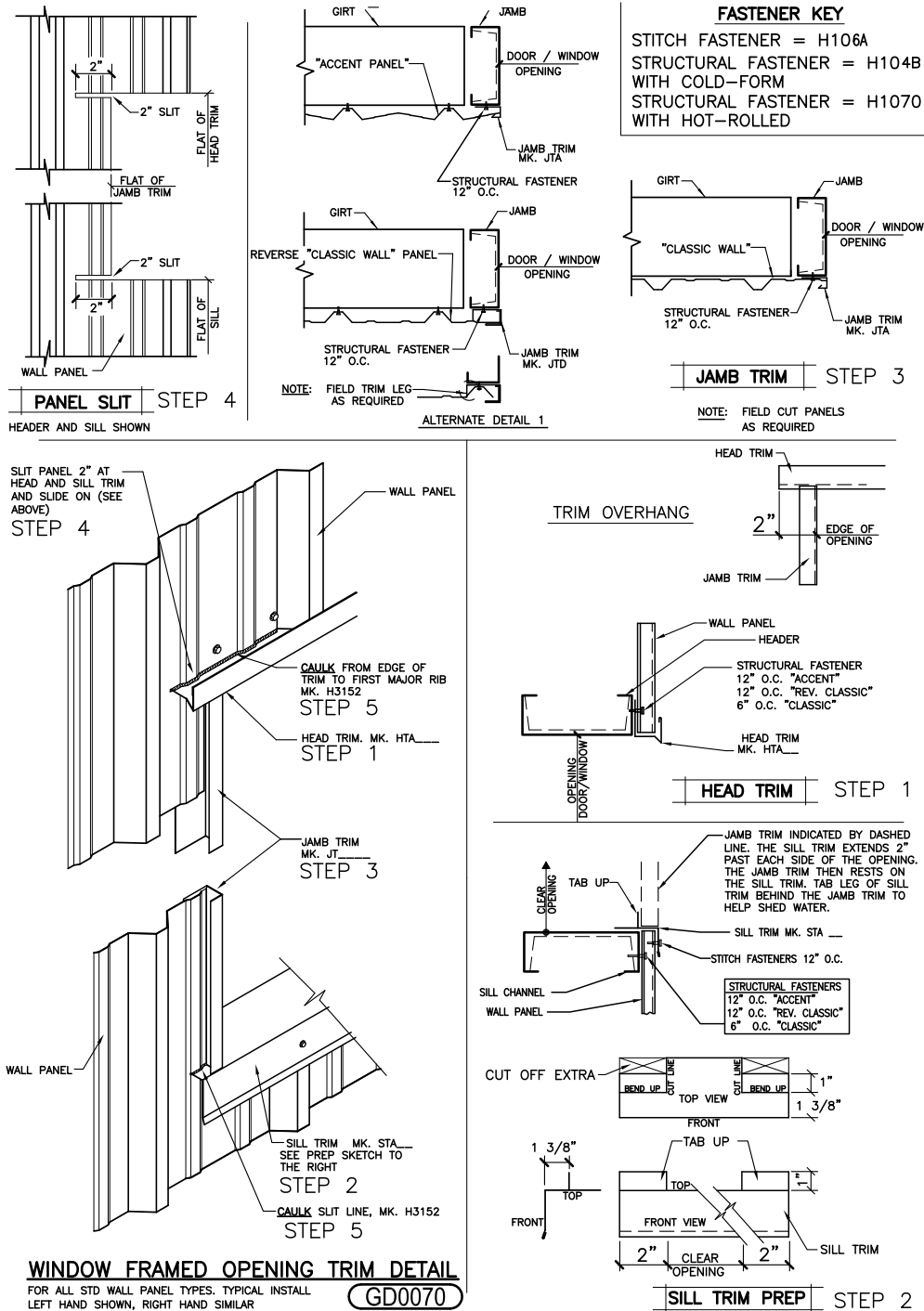


HEAD TRIM
STEP 1



PRODUCT & ENGINEERING MANUAL

GD0070 – WINDOW FRAMED OPENING TRIM



LAST REVISION
 DATE: 04/14/14
 BY: AES CHK: KMC

DETAIL NAME IF APPLICABLE
GD0070.DWG

11.5.35