



PRODUCT & ENGINEERING MANUAL

TABLE OF CONTENTS

WELDED GIRT CLIP DETAILS

CC1010 – Bypass Lapped Girts

CC1020 – Bypass Simple-Span Girts

GENERAL DETAILS

BD0120 – Eave Strut At Endwall

BG0010 – Shortspan Joist Connections (Welded) @ Rigid Frame Rafter

BG0030 – Shortspan Joist Connections (Welded) @ Braced Bays

FRAMED OPENING CONNECTIONS

CG0060 – Girt To Jamb

CG0050 – Header To Jamb

CG0055 – Jamb To Girt

CG0053 – Sill & Header To Jambs

CG0059 – Jamb To Girt

CG0130 – Jamb To Rafter

CG0040 – Jamb To Finish Floor at Masonry Wall

CG0067 – H.R. Jamb To Cold Form Header

CG0068 – H.R. Jamb To Girt

CG0069 – H.R. Jamb To Girt

CG0071 – Jamb to Box Beam Detail

CG0098 – Jamb to Box Beam Detail

HIP AND VALLEY PURLIN CONNECTIONS

BB0200 – Double Purlin at Hip

BB0220 – Hip Plate Detail

BB0300 – Double Purlin at Valley

BB0320 – Valley Plate Detail

COLD-FORMED BOX BEAM CONNECTIONS

AN0430 – Eave Extension at Bypass Girts (Eave Strut)

AN0440 – Eave Extension at Bypass Girts (Eave Purlin)

BA0600 – Non-Sloped Flange Box Beam at Low Eave

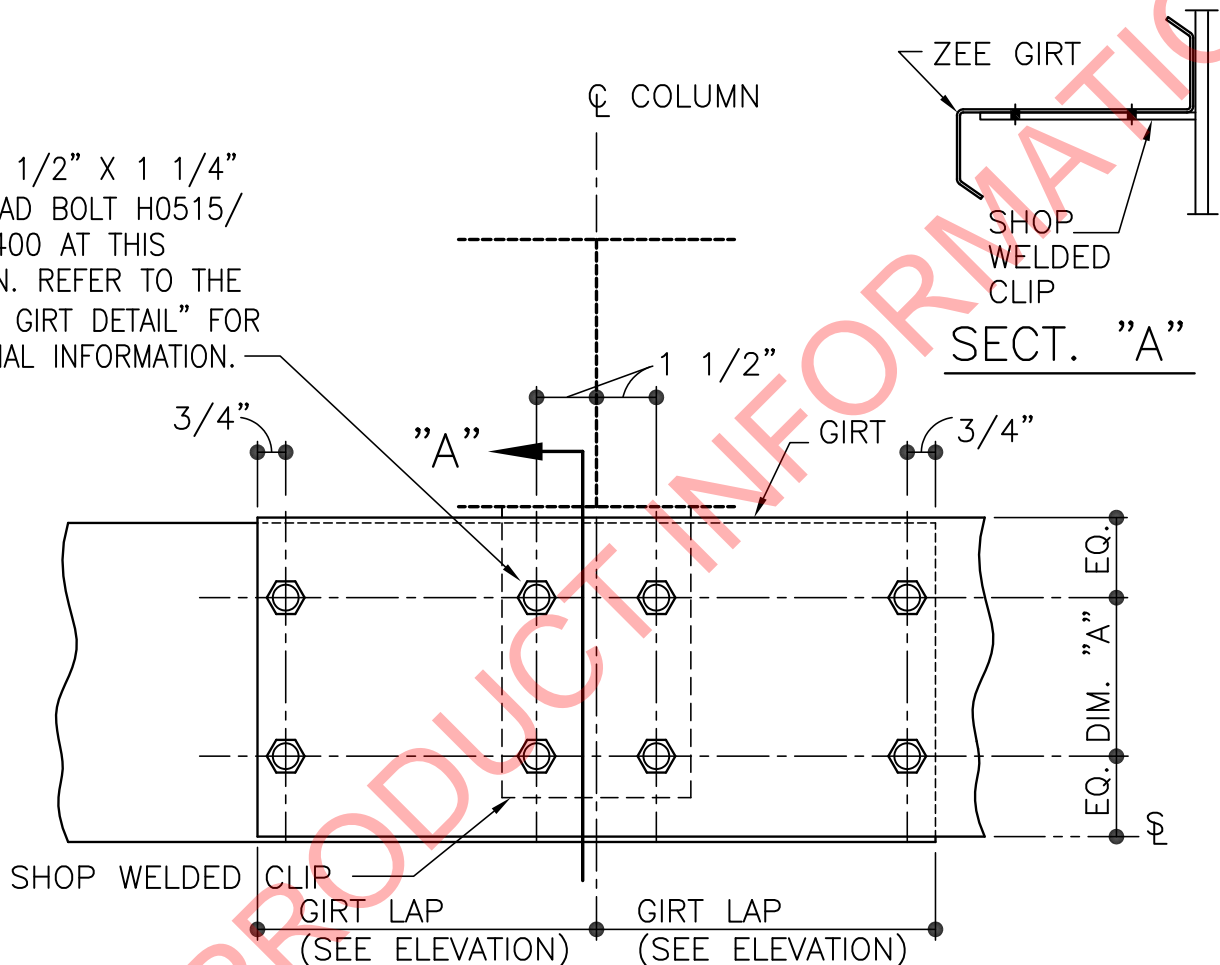
BC0200 – Non-Sloped Flange Box Beam at High Eave or Ridge



PRODUCT & ENGINEERING MANUAL

CC1010 – BYPASS LAPPED GIRTS

USE (1) 1/2" X 1 1/4"
THIN HEAD BOLT H0515/
NUT H0400 AT THIS
LOCATION. REFER TO THE
"LAPPED GIRT DETAIL" FOR
ADDITIONAL INFORMATION.



DIM. "A" = 4" AT 8" & 10" GIRTS
= 8" AT 12" GIRTS

SW OR EW GIRT DETAIL

LAPPED BYPASS GIRTS AT INTERIOR BAY COLUMNS

NOTE: USE (7) 1/2"x 1 1/4" A307 BOLTS H0500/NUTS H0400

REFERENCE ERECTOR NOTE FOR TYPICAL WASHER
REQUIREMENTS

CC1010

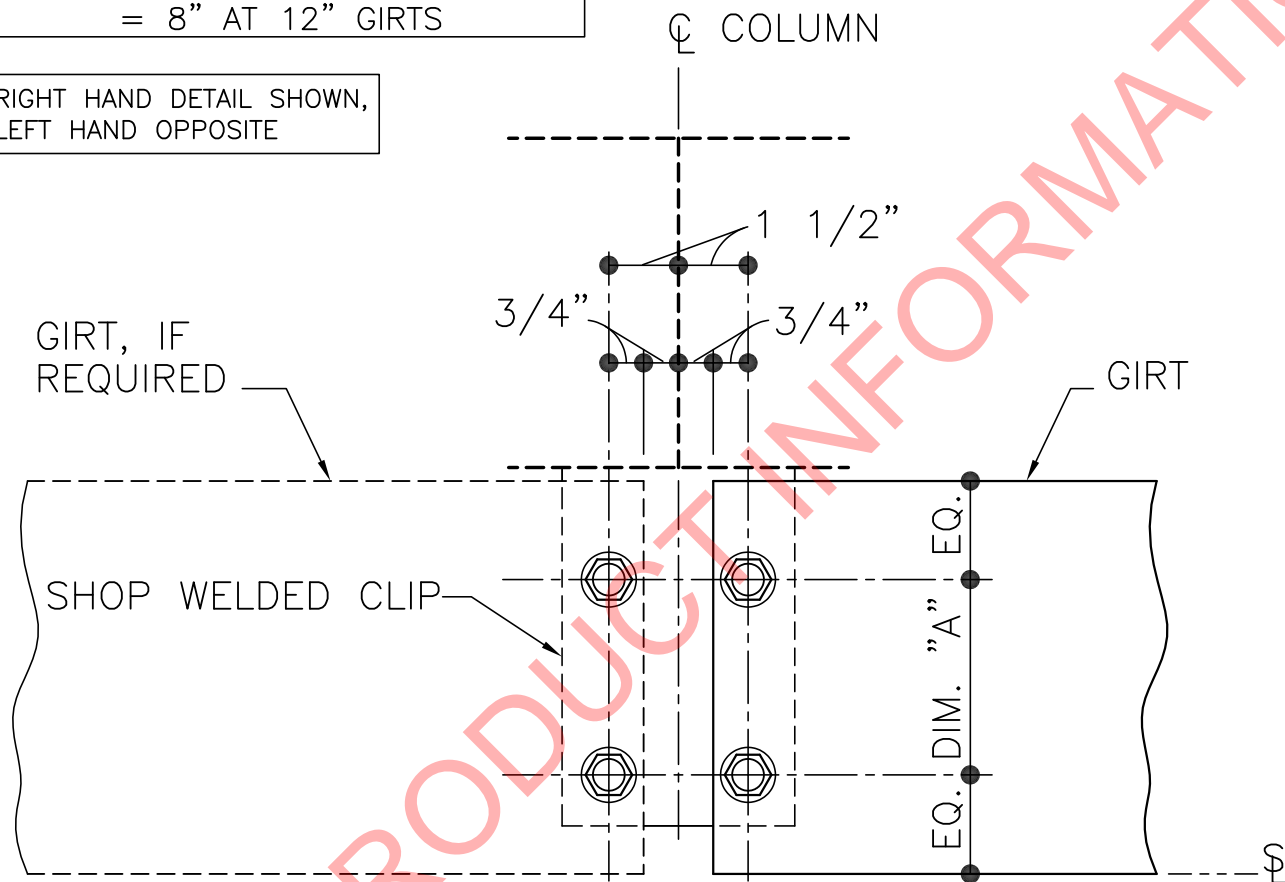


PRODUCT & ENGINEERING MANUAL

CC1020 – BYPASS SIMPLE-SPAN GIRTS

DIM. "A" = 4" AT 8" & 10" GIRTS
= 8" AT 12" GIRTS

RIGHT HAND DETAIL SHOWN,
LEFT HAND OPPOSITE



SW OR EW GIRT DETAIL

SIMPLE-SPAN BYPASS GIRTS AT INTERIOR BAY COLUMNS

NOTE: USE (4) 1/2"x 1 1/4" A307 BOLTS H0500/NUTS H0400

REFERENCE ERECTOR NOTE FOR TYPICAL WASHER
REQUIREMENTS

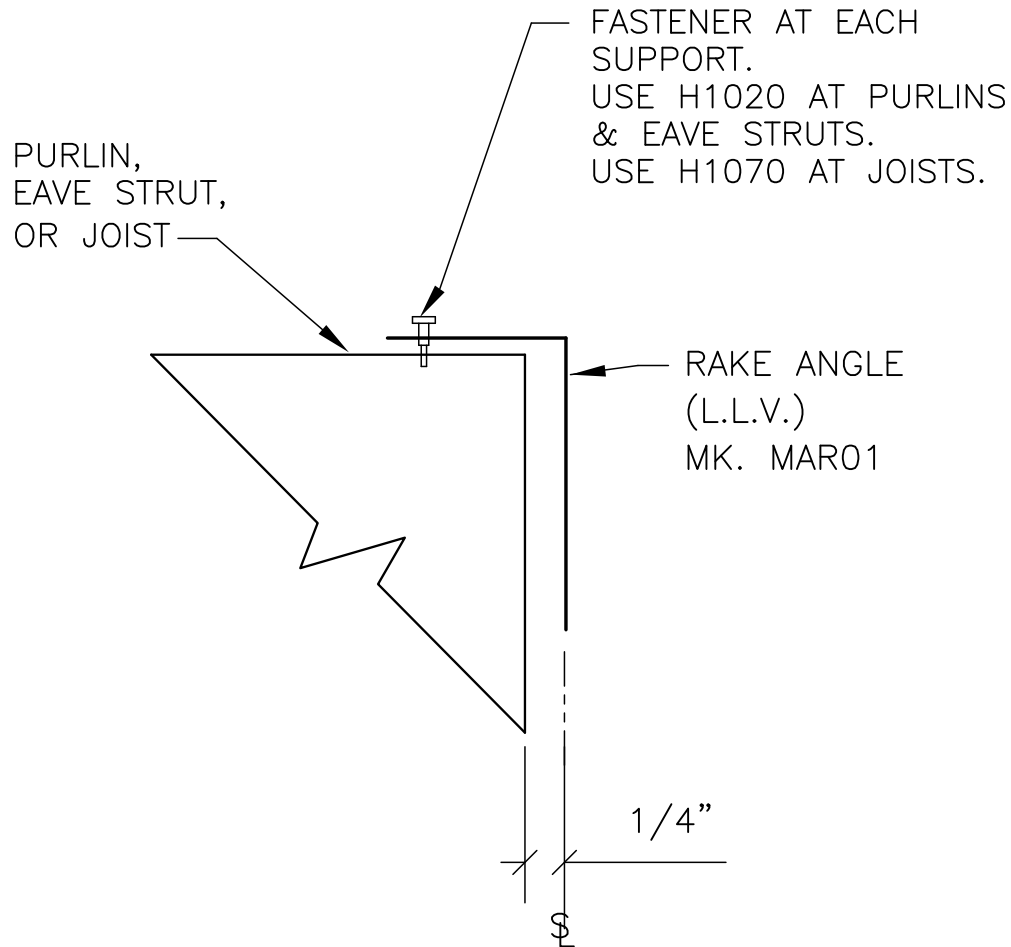
CC1020



PRODUCT & ENGINEERING MANUAL

BD0120 – EAVE STRUT AT ENDWALL

[Download DWG file by clicking here.](#)



RAKE ANGLE ATTACHMENT AT ENDWALL STEEL LINE

BD0120

LAST REVISION
DATE: 02/16/15
BY: AK CHK: EGB

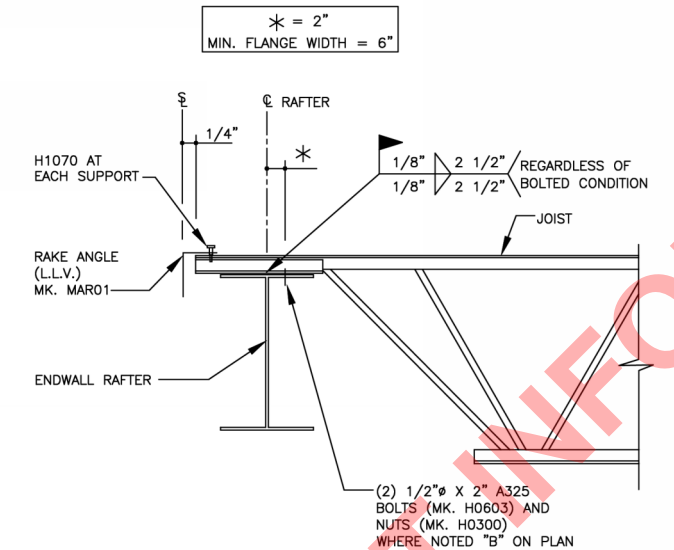
DETAIL NAME IF APPLICABLE
BD0120.DWG

11.2.4

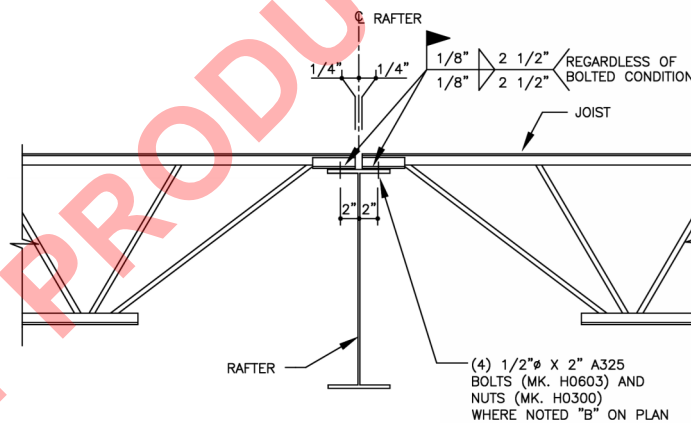


PRODUCT & ENGINEERING MANUAL

BG0010 – SHORTSPAN JOIST CONNECTIONS (WELDED) @ RIGID FRAME RAFTER



END CONDITION FOR:
WELDED ROOF JOIST SYSTEM



INTERIOR CONDITION FOR:
WELDED ROOF JOIST SYSTEM

JOIST CONNECTION DETAIL

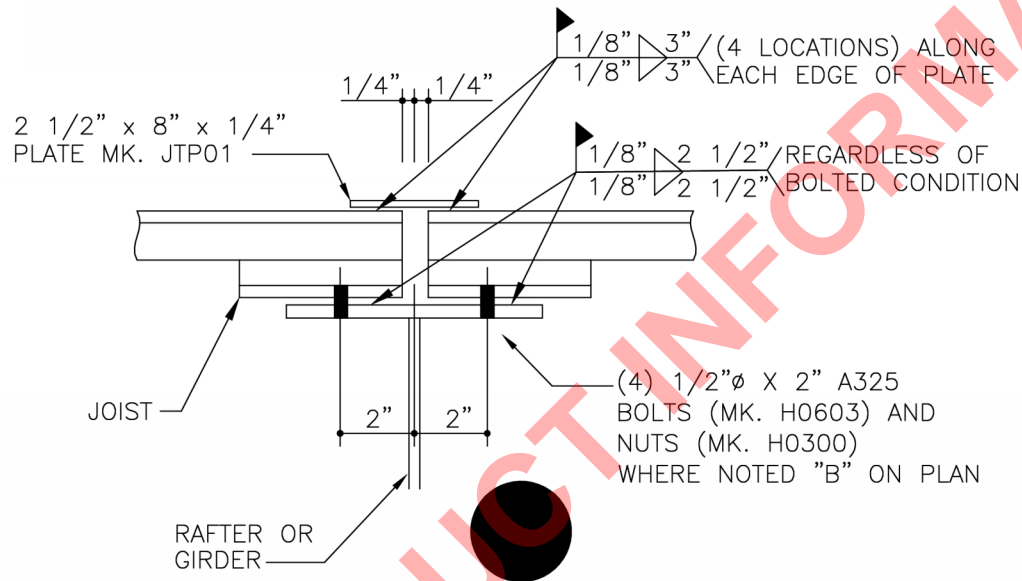
SHORTSPAN WELDED ROOF JOIST SYSTEM
REFERENCE ERECTOR NOTE FOR TYPICAL WASHER REQUIREMENTS

BG0010



PRODUCT & ENGINEERING MANUAL

BG0030 – SHORTSPAN JOIST CONNECTIONS (WELDED) @ BRACED BAYS



FOR WELDED ROOF JOIST SYSTEM,
APPLIES ONLY TO LOCATIONS DESIGNATED
WITH RELATED TRIANGLE OR CIRCLE SYMBOL

SPCL JOIST ATTACHMENT CONDITION

SHORTSPAN WELDED ROOF JOIST SYSTEM
REFERENCE ERECTOR NOTE FOR TYPICAL WASHER REQUIREMENTS

BG0030

LAST REVISION
DATE: 04/03/17
BY: SDF CHK: EGB

DETAIL NAME IF APPLICABLE
BG0030.DWG

11.2.6

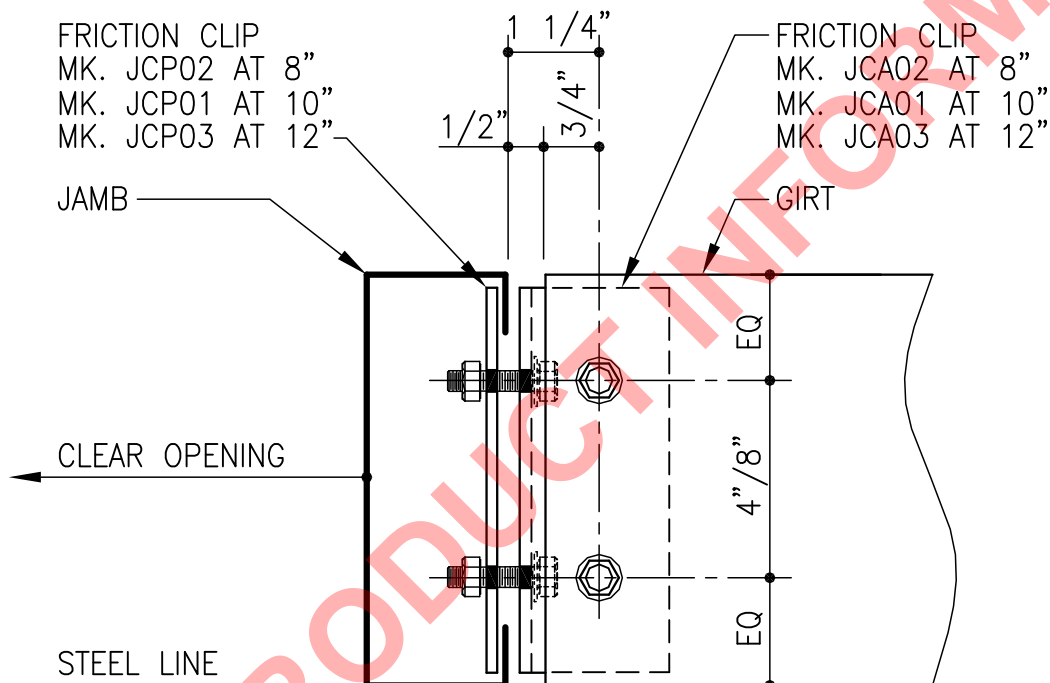


PRODUCT & ENGINEERING MANUAL

CG0060 – GIRT TO JAMB

NOTE:

INSTALL CLIPS ON JAMB BEFORE STANDING JAMB.
USE LEVEL TO ALIGN GIRTS ADJUST CLIP AS REQUIRED.



RIGHT HAND DETAIL SHOWN, LEFT HAND OPPOSITE

GIRT TO JAMB CONNECTION

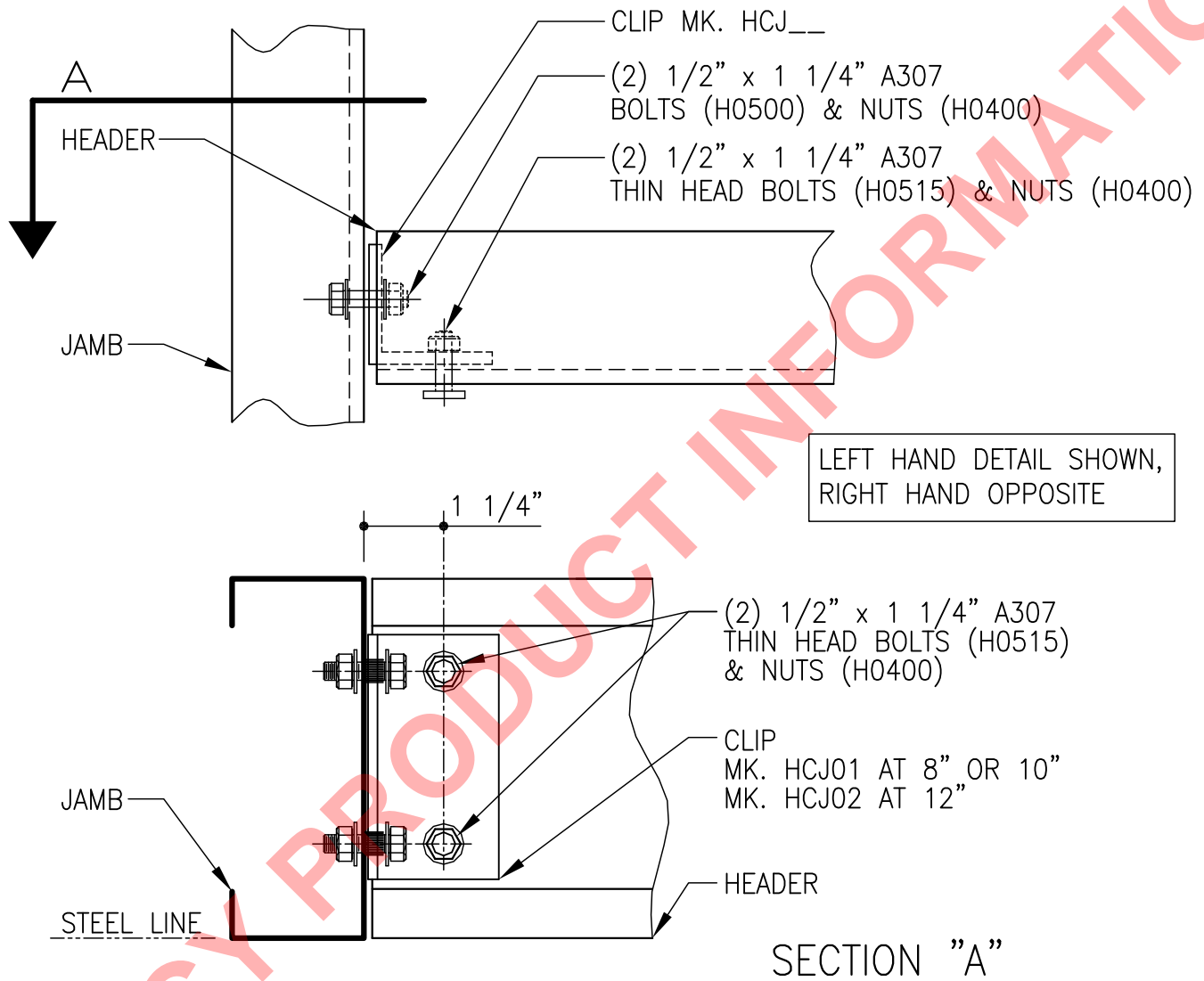
NOTE: USE (4) 1/2" x 1 1/4" A307 BOLTS H0500/NUTS H0400
REFERENCE STANDARD WASHER DETAIL FOR TYPICAL WASHER
REQUIREMENTS

CG0060



PRODUCT & ENGINEERING MANUAL

CG0050 – HEADER TO JAMB



HEADER TO JAMB CONNECTION

NOTE: USE (2) 1/2" x 1 1/4" A307 BOLTS H0500/NUTS H0400
REFERENCE STANDARD WASHER DETAIL FOR TYPICAL WASHER
REQUIREMENTS

CG0050



PRODUCT & ENGINEERING MANUAL

CG0055 – JAMB TO GIRT

DIM. A= 4" AT 8" & 10" GIRTS
DIM. A= 4-1/4" AT 12" GIRTS

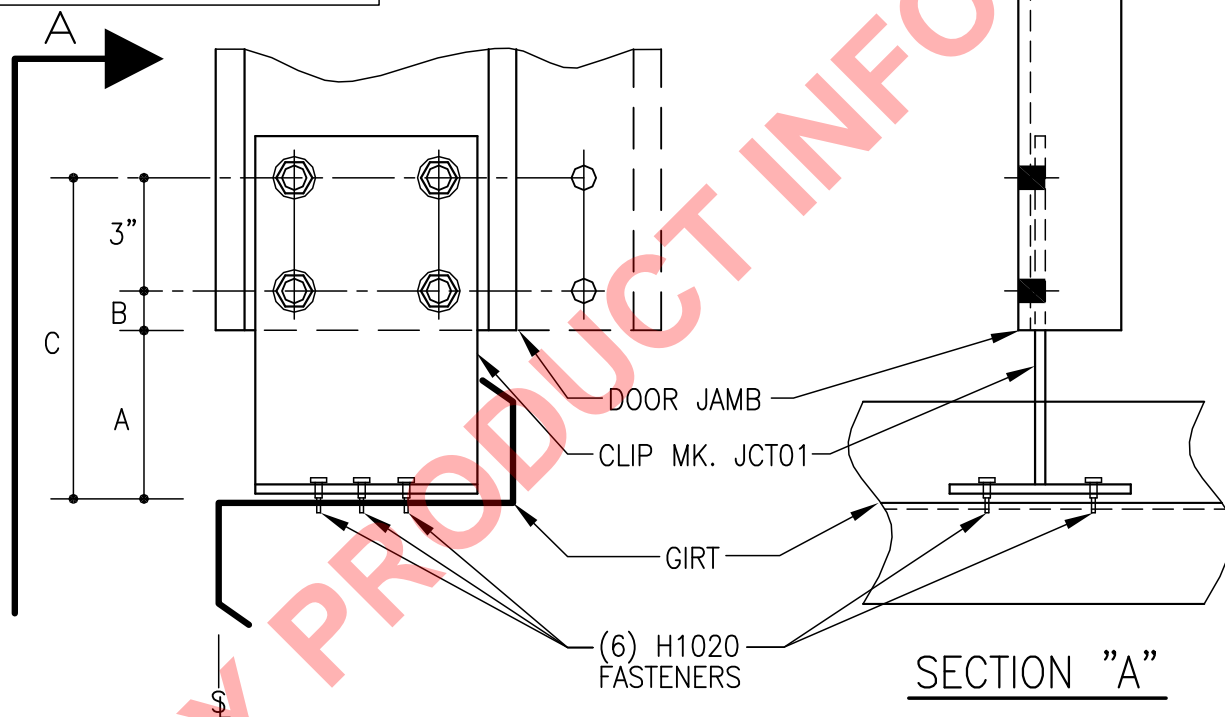
DIM. B= 1" AT 8" & 10" GIRTS
DIM. B= 3/4" AT 12" GIRTS

DIM. C= 8" AT 8" & 10" GIRTS
DIM. C= 8" AT 12" GIRTS

ERECTOR NOTE:

- PRE-DRILL HOLES AT NESTED ZEE GIRTS & DOUBLE CEE GIRTS IF REQUIRED.
- IF THE T-CLIP IS LOCATED IN THE SAME LOCATION AS NESTED GIRT BOLTS, THE NESTED GIRT BOLTS CAN BE REMOVED.

LEFT HAND DETAIL SHOWN,
RIGHT HAND OPPOSITE



JAMB TO GIRT CONNECTION

NOTE: USE (4) 1/2" x 1 1/4" A307 BOLTS H0500/NUTS H0400
REFERENCE STANDARD WASHER DETAIL FOR TYPICAL WASHER
REQUIREMENTS

CG0055

LAST REVISION
DATE: 02/16/15
BY: AK CHK: EGB

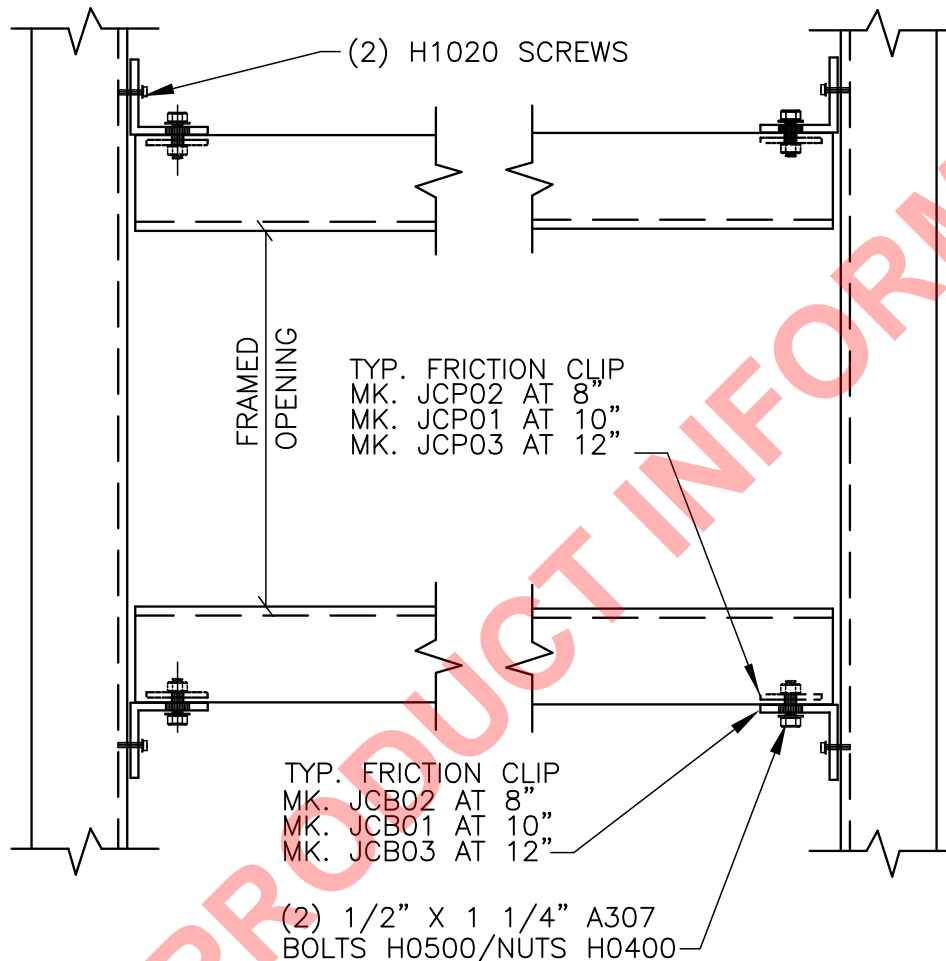
DETAIL NAME IF APPLICABLE
CG0055.DWG

11.2.9



PRODUCT & ENGINEERING MANUAL

CG0053 – SILL & HEADER TO JAMBS



FRAMED OPENING DETAIL

SILL & HEADER TO JAMB CONNECTION

REFERENCE ERECTOR NOTE FOR TYPICAL WASHER REQUIREMENTS

CG0053

LAST REVISION
DATE: 02/16/15
BY: AK CHK: EGB

DETAIL NAME IF APPLICABLE

CG0053.DWG

11.2.10



PRODUCT & ENGINEERING MANUAL

CG0059 – JAMB TO GIRT

DIM. A= 4" AT 8" & 10" GIRTS
DIM. A= 4-1/4" AT 12" GIRTS

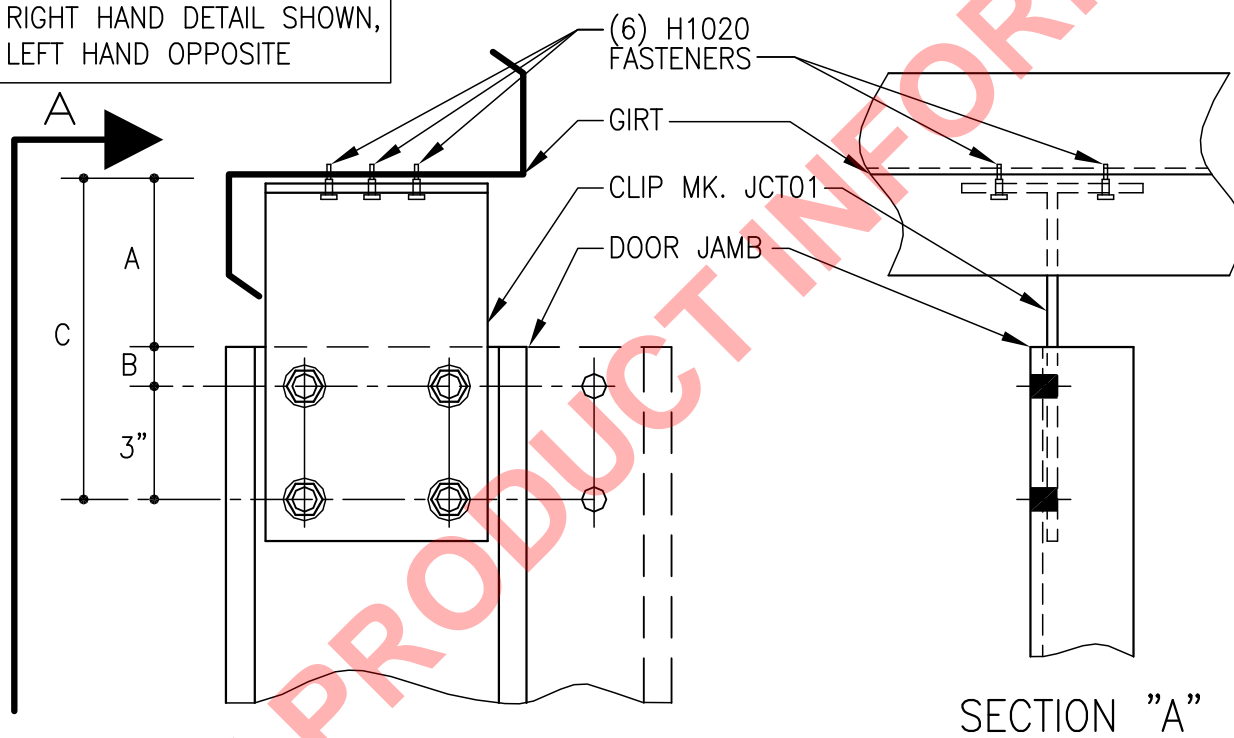
DIM. B= 1" AT 8" & 10" GIRTS
DIM. B= 3/4" AT 12" GIRTS

DIM. C= 8" AT 8" & 10" GIRTS
DIM. C= 8" AT 12" GIRTS

ERECTOR NOTE:

- PRE-DRILL HOLES AT NESTED ZEE GIRTS & DOUBLE CEE GIRTS IF REQUIRED.
- IF THE T-CLIP IS LOCATED IN THE SAME LOCATION AS NESTED GIRT BOLTS, THE NESTED GIRT BOLTS CAN BE REMOVED.

RIGHT HAND DETAIL SHOWN,
LEFT HAND OPPOSITE



DOOR JAMB TO GIRT CONN

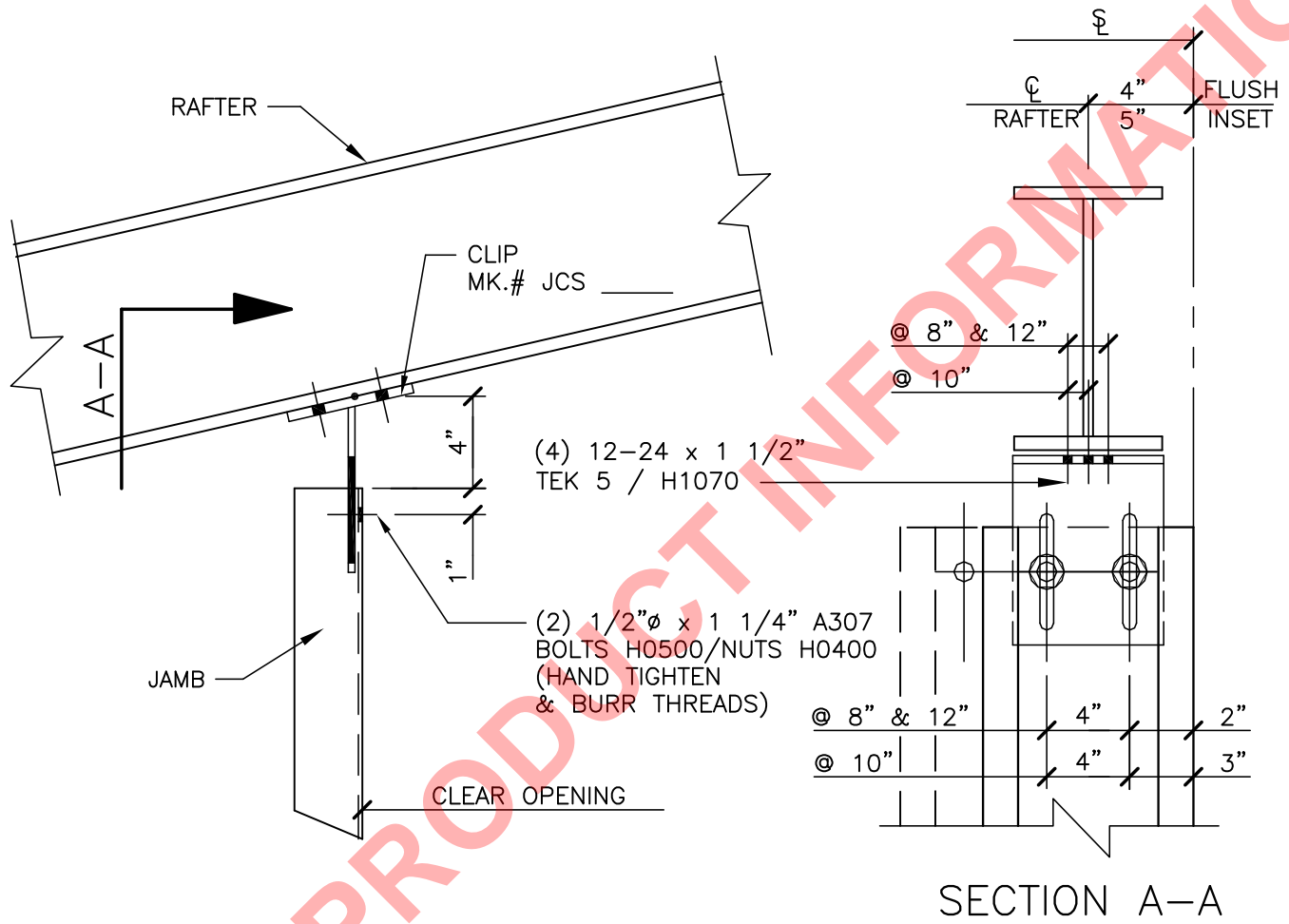
NOTE: USE (4) 1/2"X 1 1/4" A307 BOLTS H0500/NUTS H0400
REFERENCE STANDARD WASHER DETAIL FOR TYPICAL WASHER
REQUIREMENTS

CG0059



PRODUCT & ENGINEERING MANUAL

CG0130 – JAMB TO RAFTER



JAMB TO RAFTER CONNECTION

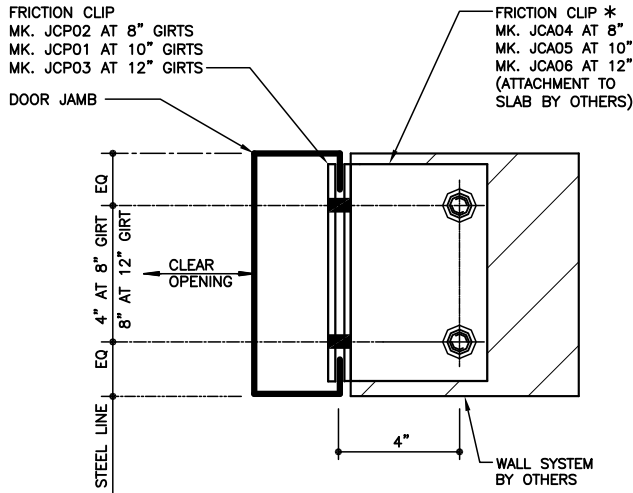
JAMB AT FLUSH OR INSET POST & BEAM ENDWALL
REFERENCE ERECTOR NOTE FOR TYPICAL WASHER REQUIREMENTS

CG0130



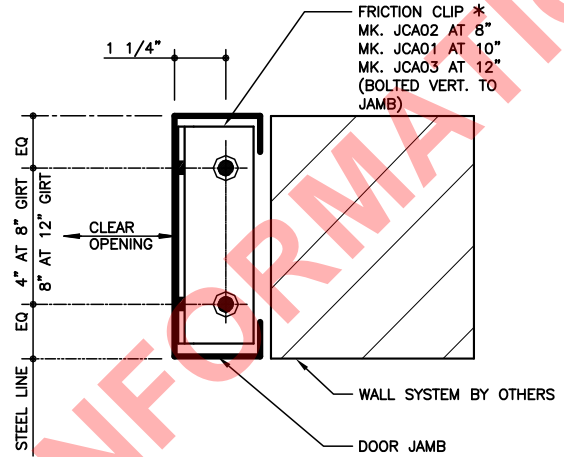
PRODUCT & ENGINEERING MANUAL

CG0040 – JAMB TO FINISH FLOOR AT MASONRY WALL



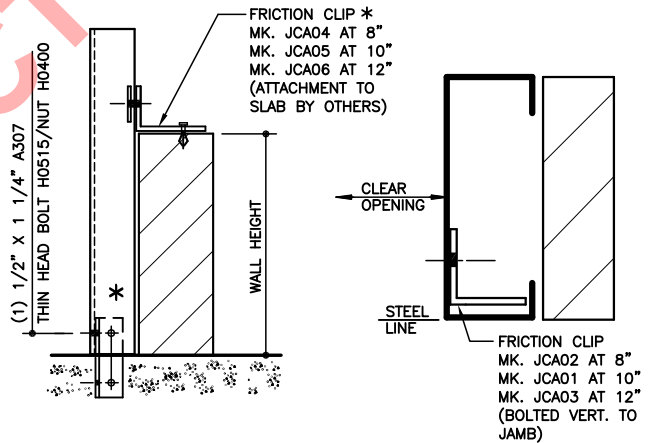
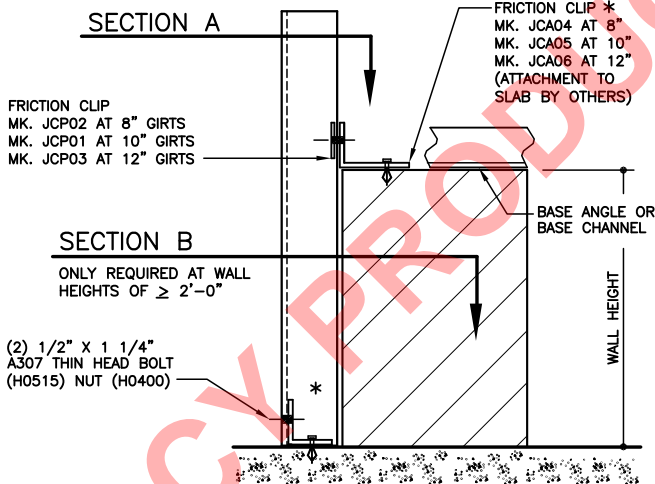
SECTION A

USE (2) 1/2" X 1 1/4" A307 BOLTS (H0500) AND NUTS (H0400)



SECTION B

ONLY REQUIRED AT WALL HEIGHTS OF GREATER THAN OR EQUAL TO 2'-0"
USE (2) 1/2" X 1 1/4" A307 THIN HEAD BOLTS (H0515) AND NUTS (H0400)



ALTERNATE SECTION B

ONLY REQUIRED AT WALL HEIGHTS OF GREATER THAN OR EQUAL TO 2'-0"
USE (2) 1/2" X 1 1/4" A307 THIN HEAD BOLTS (H0515) AND NUTS (H0400)

*ERECTOR NOTE:

SET ANCHORS IN CONCRETE, ATTACH CLIP TO JAMB PLACE CLIP OVER ANCHORS, NO NUTS REQUIRED. IF STEEL IS ERECTED BEFORE THE FINISHED FLR. IS POURED, USE THE ALTERNATE BASE DETAIL.

(8,10,12)

JAMB TO FIN FLR CONN

JAMB AT MASONRY WALL WITH BASE ANGLE OR BASE CHANNEL
REFERENCE ERECTOR NOTE FOR TYPICAL WASHER REQUIREMENTS

(CG0040)

LAST REVISION
DATE: 02/16/15
BY: AK CHK: EGB

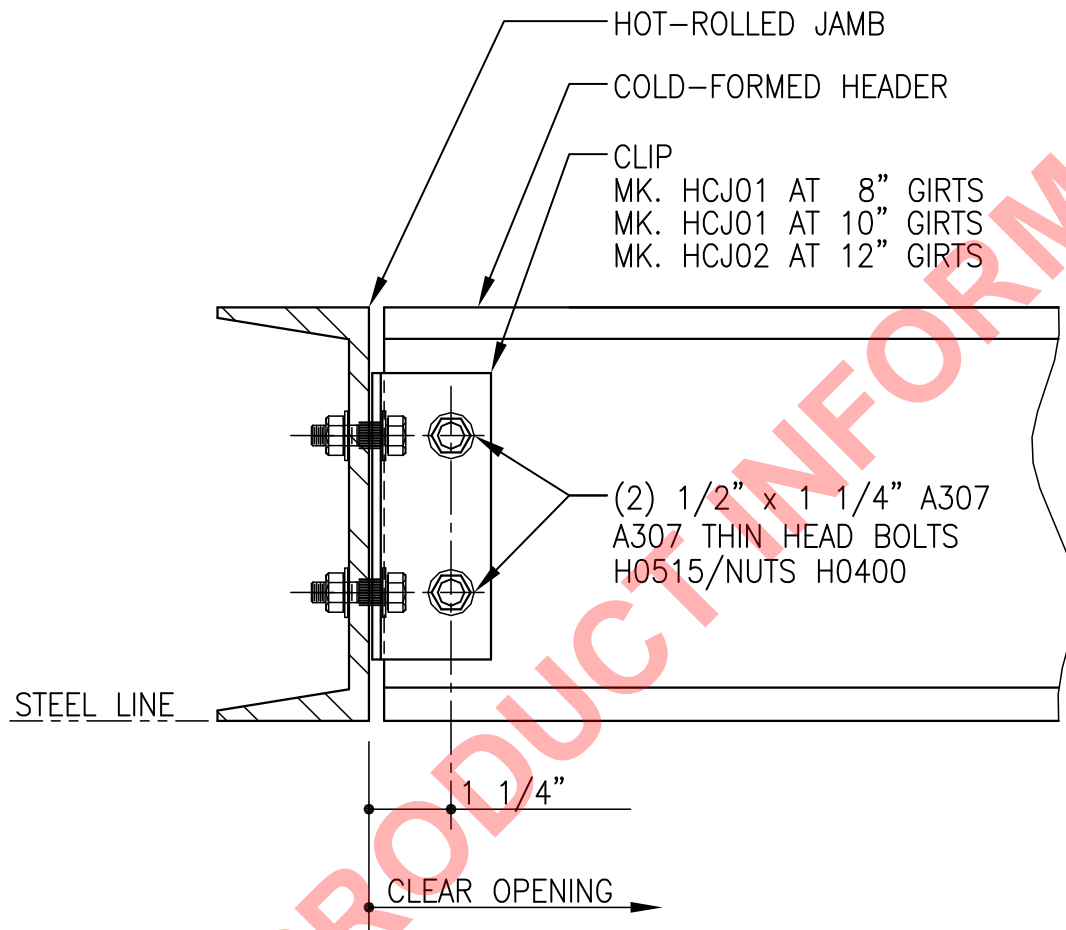
DETAIL NAME IF APPLICABLE
CG0040.DWG

11.2.13



PRODUCT & ENGINEERING MANUAL

CG0067 – H.R. JAMB TO COLD FORM HEADER



COLD FORM HEADER TO HOT-ROLLED JAMB

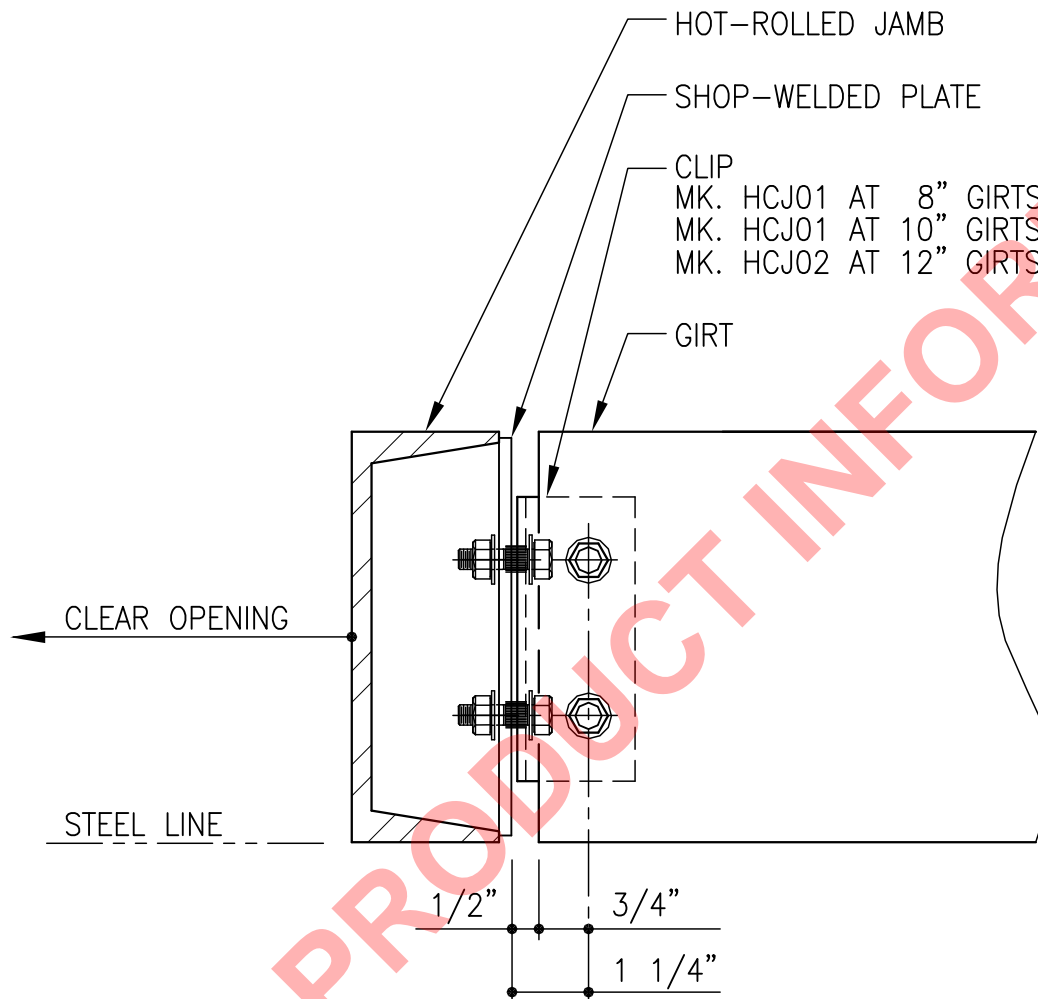
USE (2) 1/2" x 1 1/4" A307 BOLTS H0500 / NUTS H0400
REFERENCE STANDARD WASHER DETAIL FOR TYPICAL WASHER
REQUIREMENTS

CG0067



PRODUCT & ENGINEERING MANUAL

CG0068 – H.R. JAMB TO GIRT



GIRT TO HOT-ROLLED JAMB

NOTE: USE (4) 1/2" x 1 1/4" A307 BOLTS H0500 / NUTS H0400
REFERENCE STANDARD WASHER DETAIL FOR TYPICAL WASHER
REQUIREMENTS

CG0068



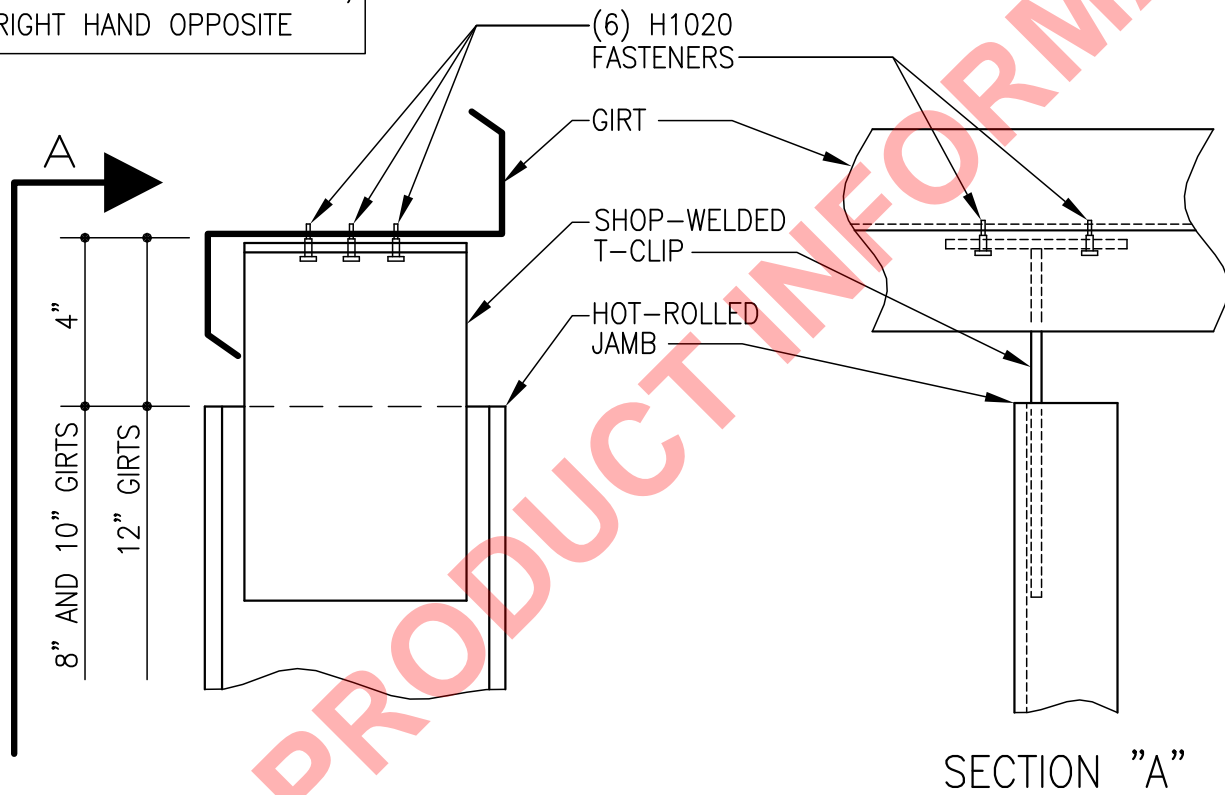
PRODUCT & ENGINEERING MANUAL

CG0069 – H.R. JAMB TO GIRT

ERECTOR NOTE:

- PRE-DRILL HOLES AT NESTED ZEE GIRTS & DOUBLE CEE GIRTS IF REQUIRED.
- IF THE T-CLIP IS LOCATED IN THE SAME LOCATION AS NESTED GIRT BOLTS, THE NESTED GIRT BOLTS CAN BE REMOVED.

LEFT HAND DETAIL SHOWN,
RIGHT HAND OPPOSITE



HOT-ROLLED JAMB TO ZEE GIRT

SHOP-WELDED CLIP CONNECTION

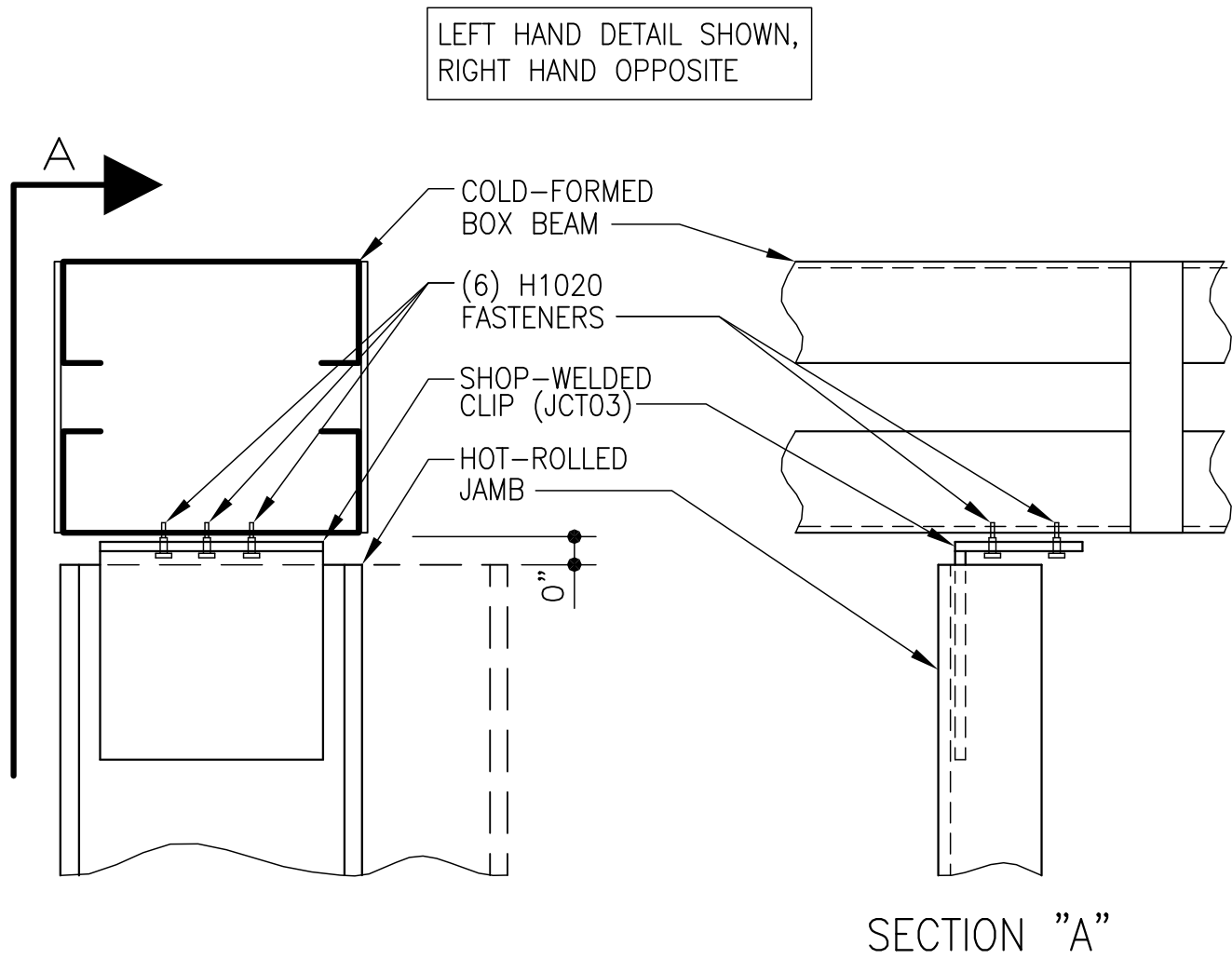
CG0069



PRODUCT & ENGINEERING MANUAL

CG0071 – JAMB TO BOX BEAM DETAIL

[Download DWG file by clicking here.](#)



HOT-ROLLED JAMB TO BOX BEAM

SHOP-WELDED CLIP CONNECTION

REFERENCE STANDARD WASHER DETAIL FOR TYPICAL WASHER
REQUIREMENTS

CG0071

LAST REVISION
DATE: 02/16/15
BY: AK CHK: EGB

DETAIL NAME IF APPLICABLE
CG0071.DWG

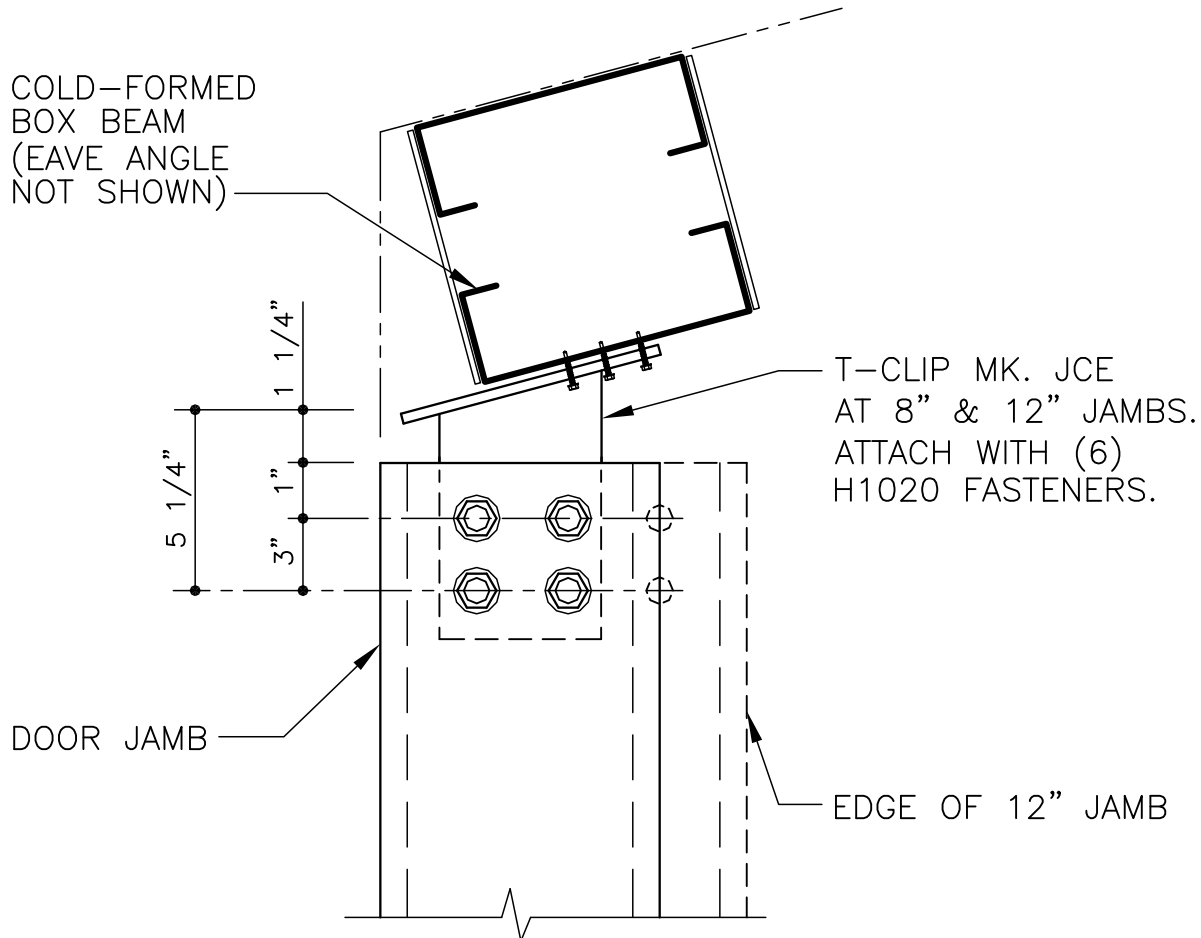
11.2.17



PRODUCT & ENGINEERING MANUAL

CG0098 – JAMB TO BOX BEAM DETAIL

[Download DWG file by clicking here.](#)



(8" OR 12") JAMB TO BOX BEAM

NOTE: USE (4) 1/2" x 1 1/4" A307 BOLTS H0500/NUTS H0400
REFERENCE ERECTOR NOTE FOR TYPICAL WASHER REQUIREMENTS

CG0098

LAST REVISION
DATE: 02/16/15
BY: AK CHK: EGB

DETAIL NAME IF APPLICABLE
CG0098.DWG

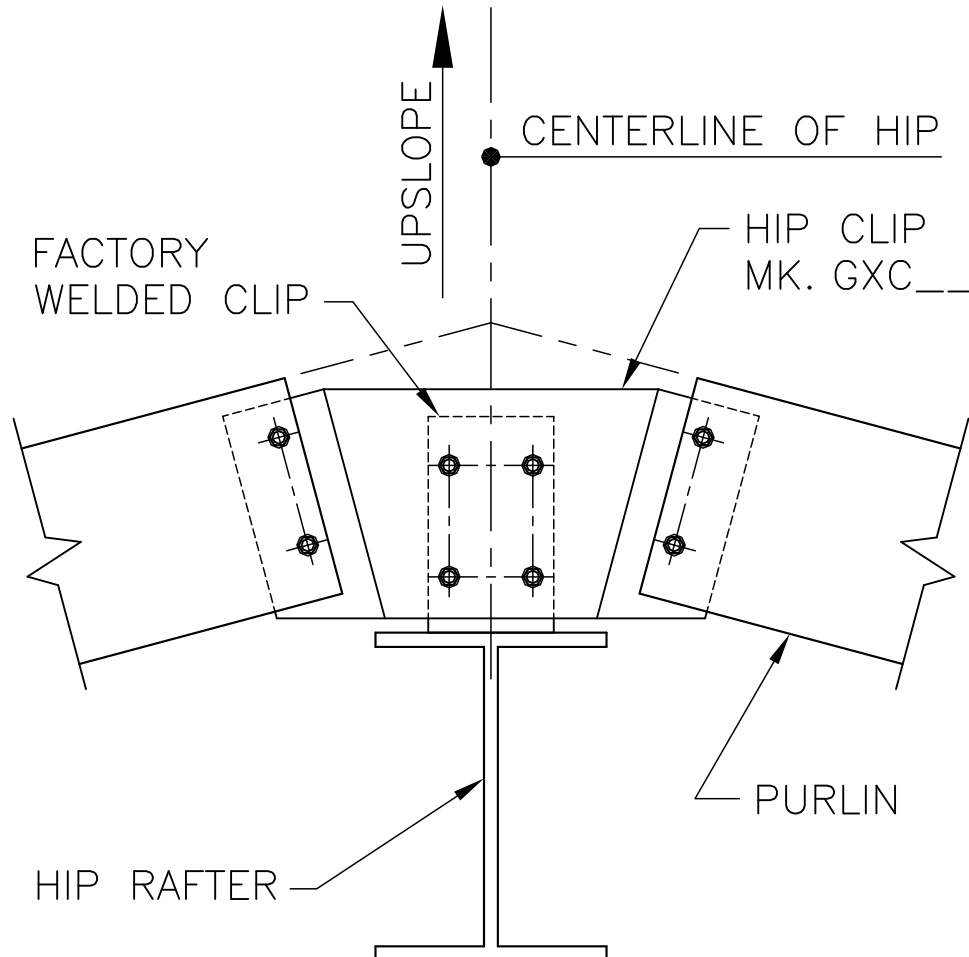
11.2.19



PRODUCT & ENGINEERING MANUAL

HIP AND VALLEY PURLIN CONNECTIONS BB0200 – DOUBLE PURLIN AT HIP

[Download DWG file by clicking here.](#)



PURLIN CONNECTION AT HIP

USE (8) 1/2" x 1 1/4" A307
BOLTS (H0500) AND NUTS (H0400)
REF. ERECTOR NOTE FOR TYP. WASHER REQUIREMENTS

BB0200

LAST REVISION
DATE: 02/16/15
BY: AK CHK: EGB

DETAIL NAME IF APPLICABLE
BB0200.DWG

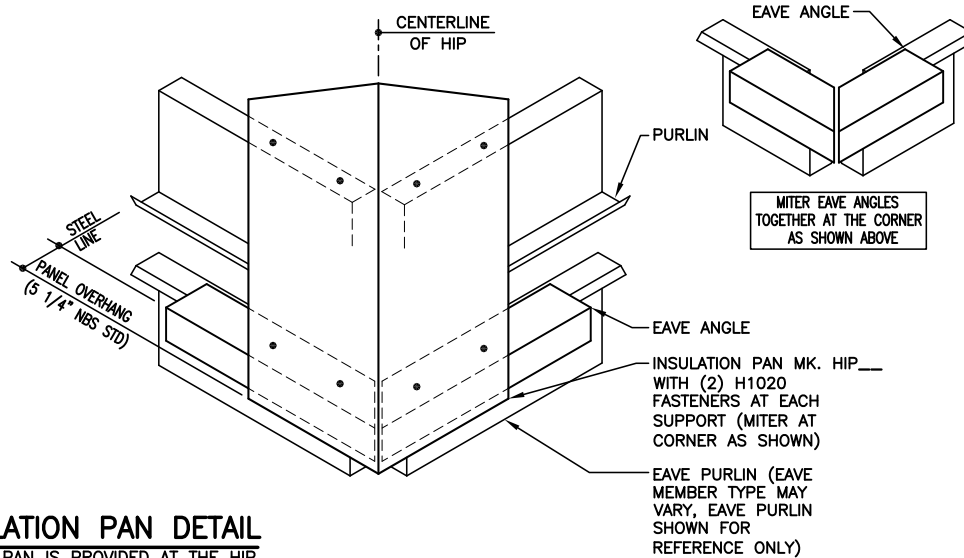
11.2.20



PRODUCT & ENGINEERING MANUAL

BB0220 – HIP PLATE DETAIL

[Download DWG file by clicking here.](#)



HIP INSULATION PAN DETAIL

THE INSULATION PAN IS PROVIDED AT THE HIP WHEN THE ROOF PANELS ARE BY OTHERS

BB0220

LAST REVISION
DATE: 02/16/15
BY: AK CHK: EGB

DETAIL NAME IF APPLICABLE
BB0220.DWG

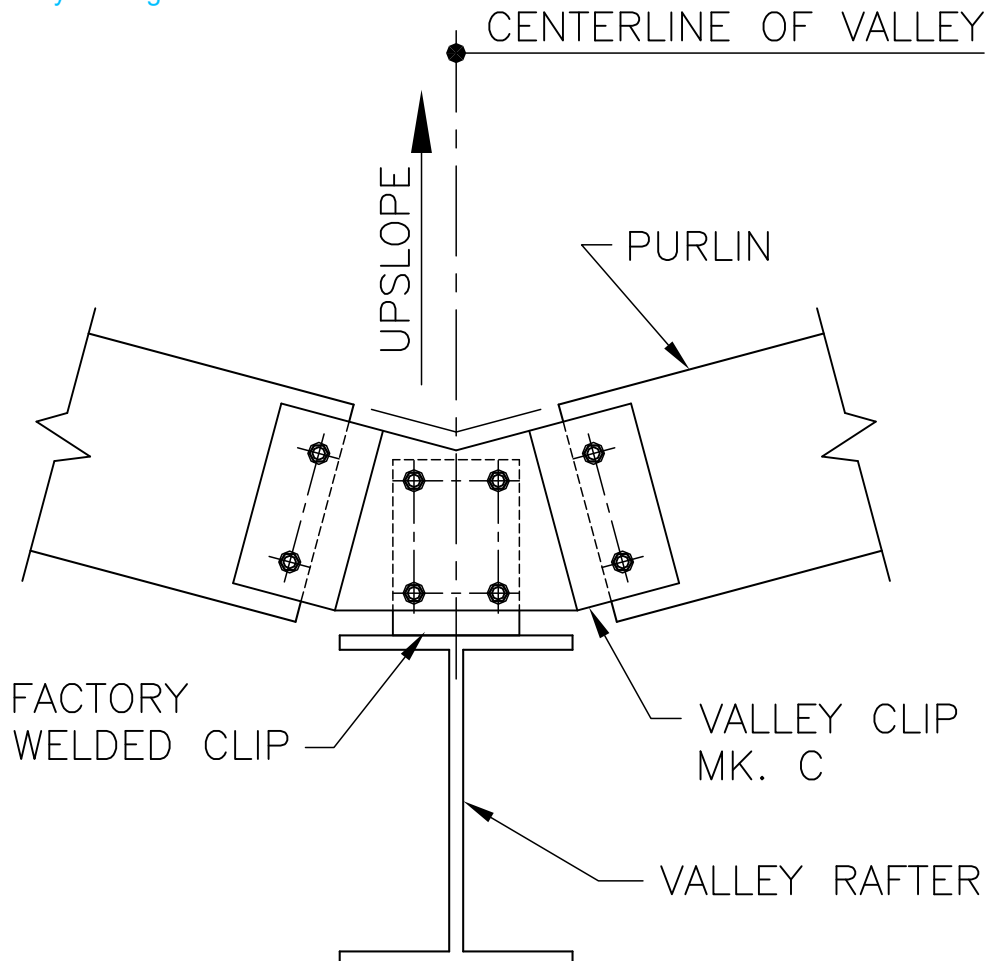
11.2.21



PRODUCT & ENGINEERING MANUAL

BB0300 – DOUBLE PURLIN AT VALLEY

[Download DWG file by clicking here.](#)



PURLIN CONNECTION AT VALLEY

USE (8) 1/2" x 1 1/4" A307
BOLTS (H0500) AND NUTS (H0400)
REFERENCE ERECTOR NOTE FOR WASHER REQUIREMENTS

BB0300

LAST REVISION
DATE: 02/16/15
BY: AK CHK: EGB

DETAIL NAME IF APPLICABLE
BB0300.DWG

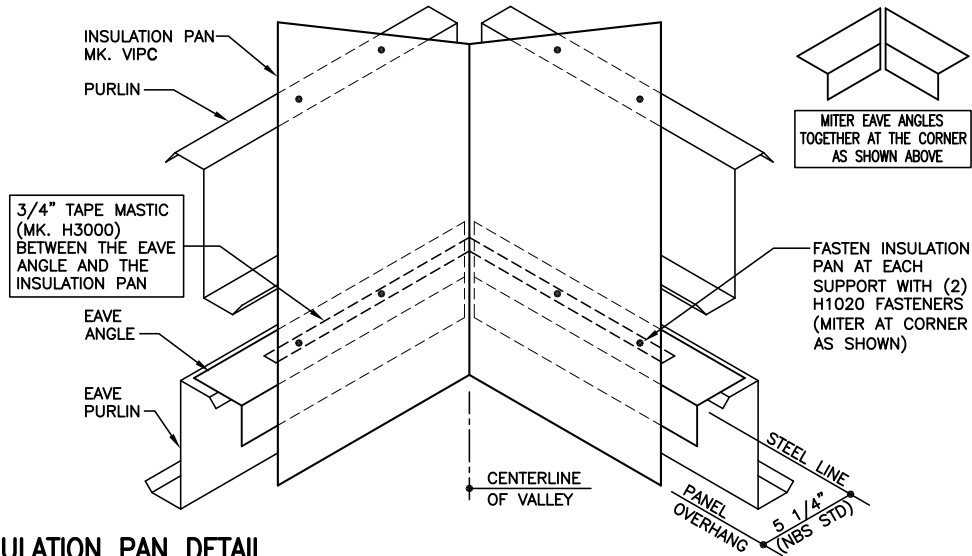
11.2.22



PRODUCT & ENGINEERING MANUAL

BB0320 – VALLEY PLATE DETAIL

[Download DWG file by clicking here.](#)



VALLEY INSULATION PAN DETAIL

THE INSULATION PAN IS PROVIDED AT THE VALLEY
WHEN THE ROOF PANELS ARE BY OTHERS

BB0320

LAST REVISION
DATE: 02/16/15
BY: AK CHK: EGB

DETAIL NAME IF APPLICABLE

BB0320.DWG

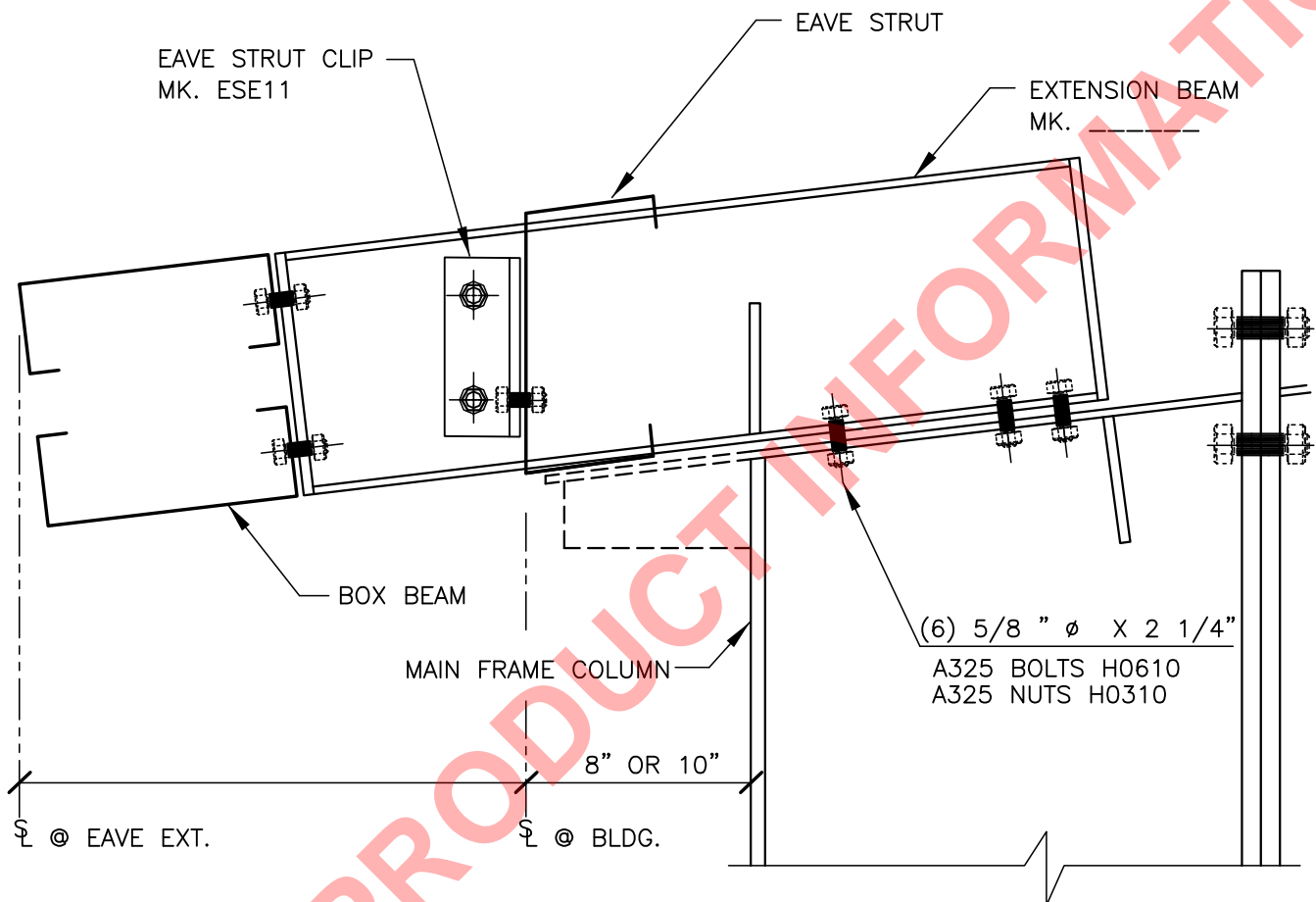
11.2.23



PRODUCT & ENGINEERING MANUAL

COLD-FORMED BOX BEAM CONNECTIONS

AN0430 – EAVE EXTENSION AT BYPASS GIRTS (EAVE STRUT)



LOW EAVE EXTENSION DETAIL

BYPASS GIRTS AT INTERMEDIATE FRAMES
FOR HAUNCH DEPTHS > 1'-3"

NOTE: USE 1/2"X 2" A325 BOLTS H0603/NUTS H0300 U.N.O.

AN0430

LAST REVISION
DATE: 02/16/15
BY: AK CHK: EGB

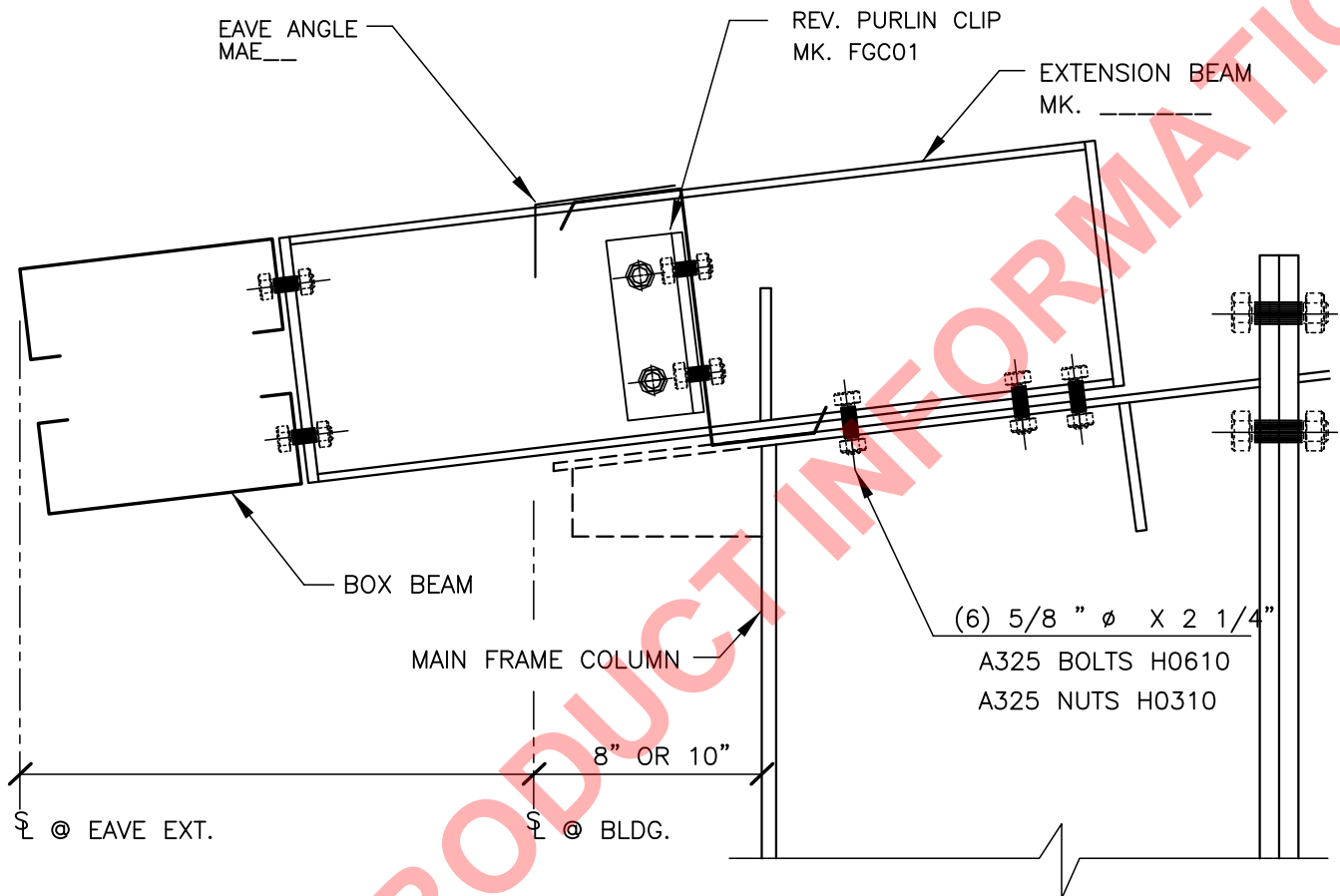
DETAIL NAME IF APPLICABLE
AN0430.DWG

11.2.24



PRODUCT & ENGINEERING MANUAL

AN0440 – EAVE EXTENSION AT BYPASS GIRTS (EAVE PURLIN)



LOW EAVE EXTENSION DETAIL

BYPASS GIRTS AT INTERMEDIATE FRAMES
FOR HAUNCH DEPTHS > 1'-3"

NOTE: USE 1/2"X 2" A325 BOLTS H0603/NUTS H0300 U.N.O.

AN0440

LAST REVISION
DATE: 02/16/15
BY: AK CHK: EGB

DETAIL NAME IF APPLICABLE
AN0440.DWG

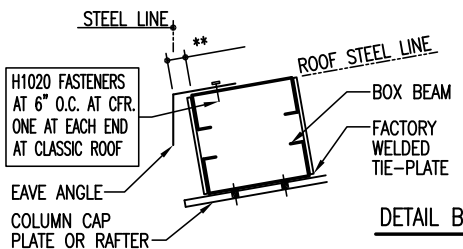
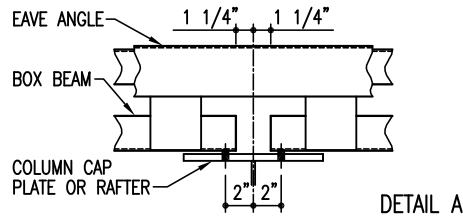
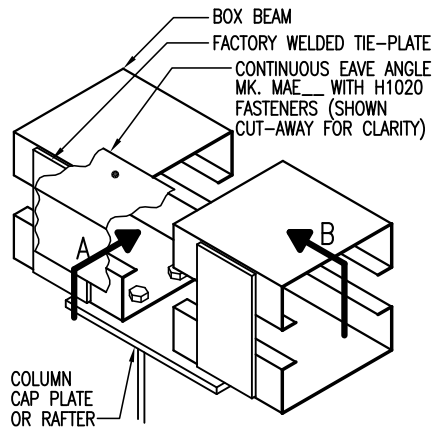
11.2.25



PRODUCT & ENGINEERING MANUAL

BA0600 – NON-SLOPED FLANGE BOX BEAM AT LOW EAVE

[Download DWG file by clicking here.](#)



COLD-FORMED BOX BEAM AT LOW EAVE (STD. CONN.)

USE (4) 1/2" x 2" A325 BOLTS H0603/NUTS H0300
REFERENCE ERECTOR NOTE FOR TYPICAL WASHER REQUIREMENTS

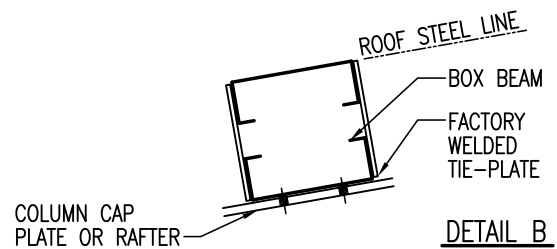
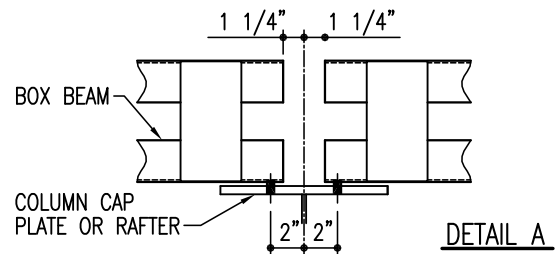
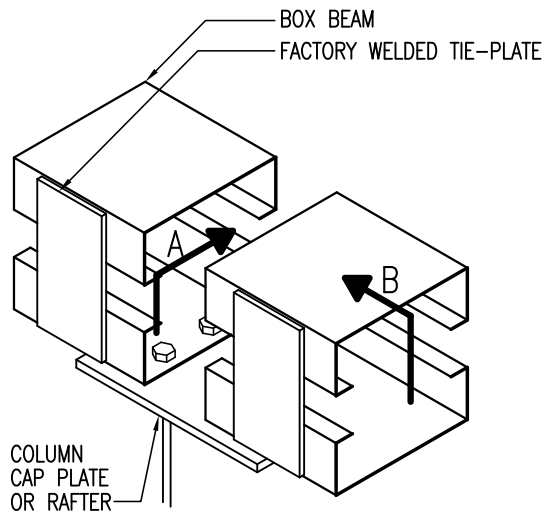
BA0600



PRODUCT & ENGINEERING MANUAL

BC0200 – NON-SLOPED FLANGE BOX BEAM AT HIGH EAVE OR RIDGE

[Download DWG file by clicking here.](#)



COLD-FORMED BOX BEAM AT HIGH EAVE (STD. CONN.)

USE (4) 1/2" x 2" A325 BOLTS H0603/NUTS H0300

REFERENCE FACTOR NOTE FOR TYPICAL WASHER REQUIREMENTS

BC0200

LAST REVISION
DATE: 02/16/15
BY: AK CHK: EGB

DETAIL NAME IF APPLICABLE
BC0200.DWG

11.2.28