



# PRODUCT & ENGINEERING MANUAL

## TABLE OF CONTENTS

General Anchor Bolt Notes .....	3
AB0010PE – Anchor Bolt Plan.....	4
AB0020PE – Sidewall Or Endwall Column Setback .....	5
AB0030PE – Column At Finish Floor.....	6
AB0040PE – Column Base Pocket.....	7
AB0050PE – Base Plate With Grout Required .....	8
AB0060PE – Endwall Column Inset Detail – (Cold Form) .....	9
AB0070PE – Endwall Column Bypass Detail – (Cold Form) .....	10
AB0080PE – Endwall Column Inset Detail – (Built - Up) .....	11
Fixed Base Post & Beam Corner Columns (Inset Girt Conditions) .....	12
BU8LT_PE .....	12
BU8RT_PE .....	13
BU8LB_PE .....	14
BU8RB_PE .....	15
Fixed Base Post & Beam Corner Columns (Bypass Girt Condition).....	16
BUB8LTPE.....	16
BUB8RTPE .....	17
BUB8LBPE .....	18
BUB8RBPE.....	19
Single Or Double Cee Post & Beam Corner Columns .....	20
C4LT_PE .....	20
C4RT_PE.....	21
C4LB_PE .....	22
C4RB_PE.....	23
Built - Up Endwall Columns.....	24
BU4LX_PE .....	24
BU4RX_PE .....	25
Fixed Base Intermediate Endwall Columns .....	26
BU8LX_PE.....	26
BU8RX_PE .....	27
Single Or Double Cee Endwall Columns .....	28
C4LI_PE.....	28
C4RI_PE .....	29
Built - Up Rigid Frame Corner Columns.....	30



# PRODUCT & ENGINEERING MANUAL

BU6TL_PE .....	30
BU6TR_PE .....	31
BU6BL_PE .....	32
BU6BR_PE .....	33
Built - Up Rigid Frame Sidewall Details .....	34
BU6TX_PE .....	34
BU6BX_PE .....	35
Pipe & Tube Interior Columns .....	36
RC4IN_PE .....	36
SC4IN_PE .....	37
Built - Up Interior Columns .....	38
BU4IN_PE .....	38
BU6IN_PE .....	39
AB0180PE – Sidewall Portal Frames – General Information.....	40
Sidewall Portal Frame Corner Columns .....	41
PC6TL_PE .....	41
PC6TR_PE .....	42
PC6BL_PE .....	43
PC6BR_PE .....	44
PC6BLXPE .....	45
PC6BRXPE .....	46
PC6TLXPE .....	47
PC6TRXPE .....	48
AB0190PE – Corner Bracing Tee Plate Details.....	49
Bracing Tee Plates (At Interior Bays).....	50
BT4LX_PE .....	50
BT4RX_PE .....	51
BT4BX_PE .....	52
BT4TX_PE .....	53



# PRODUCT & ENGINEERING MANUAL

## **GENERAL ANCHOR BOLT NOTES**

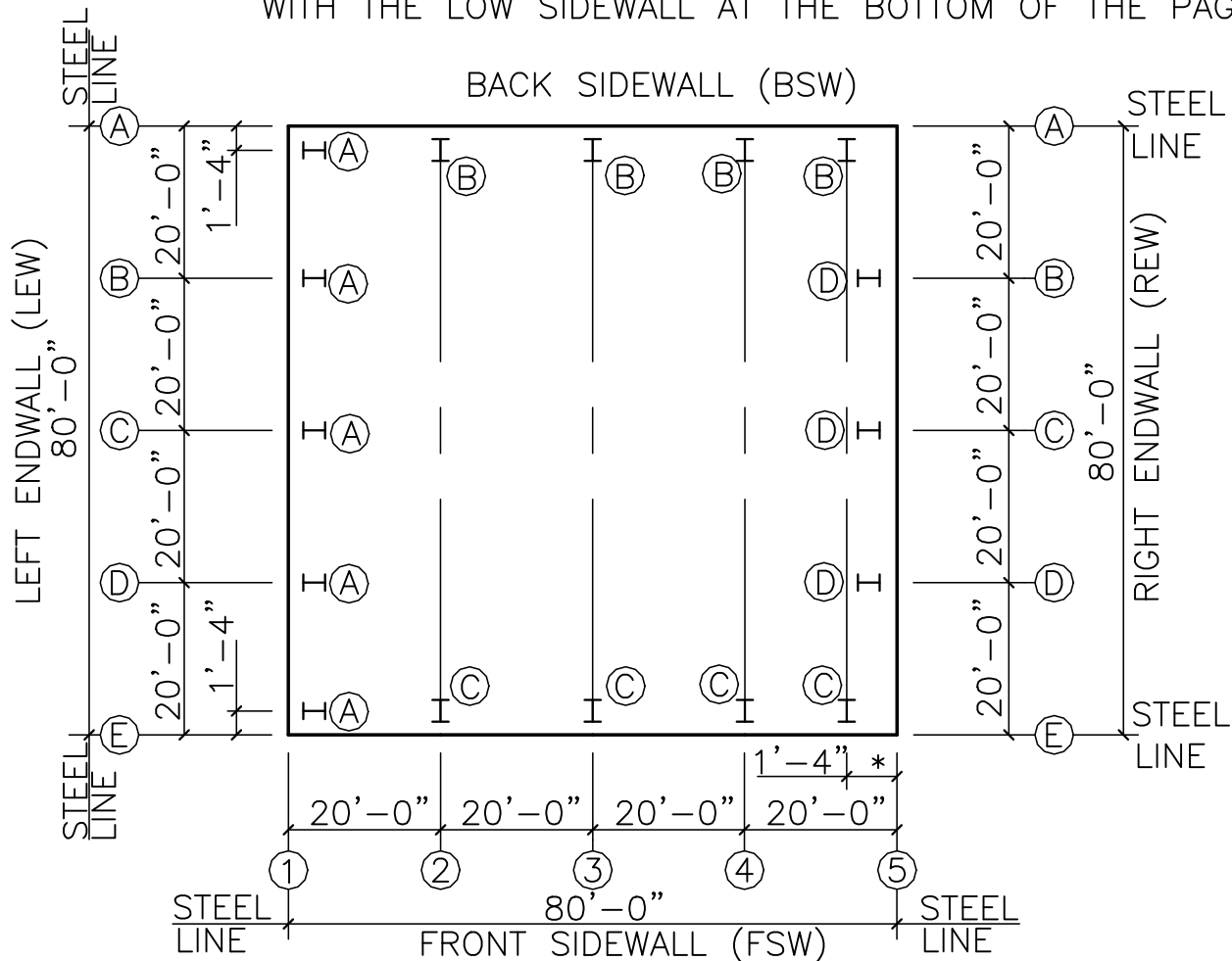
1. Nucor supplies (3) sets of 11" X 17" anchor bolt setting plans on all building orders.
2. The anchor bolt patterns and foundation details in this section are shown primarily to assist designers and estimators.
3. Anchor bolt setting plans may be drawn using the data in this section. If such a drawing is done, it must be submitted with the building order to ensure plan details are followed.
4. All anchor bolts are ASTM F1554 Grade 36 unless noted otherwise. Nucor sizes the anchor bolt for shear and tension at the column base. All aspects of the foundation design including anchor bolt embedment length and development to the concrete is not by Nucor. The responsible architect or engineer for a specific project must see that this is done by a professional who is qualified for this type of work.
5. **ANCHOR BOLTS AND NUTS ARE NOT SUPPLIED BY NUCOR AS PART OF THE BUILDING ORDER.**
6. *In keeping with a continuing program of product development, all information contained herein is subject to change.*
7. Base plate elevation is assumed to be "at finished floor" (without grout) unless specified otherwise on the order documents.
8. If "Bert" anchor bolt plan and reactions are used, they must be submitted with the order documents.
9. Standard anchor bolt projection is 3" above the bottom of the baseplate (grout thickness needs to be added to the projection where grout is used).
10. **IMPORTANT NOTE: The Nucor Anchor Bolt Setting Plan MUST be used in lieu of the Architect's Anchor Bolt Setting plan.**



# PRODUCT & ENGINEERING MANUAL

## AB0010PE – ANCHOR BOLT PLAN

1. STANDARD ORIENTATION SHOWN
2. TYPICALLY SINGLE SLOPE BUILDINGS WILL BE ORIENTED WITH THE LOW SIDEWALL AT THE BOTTOM OF THE PAGE.

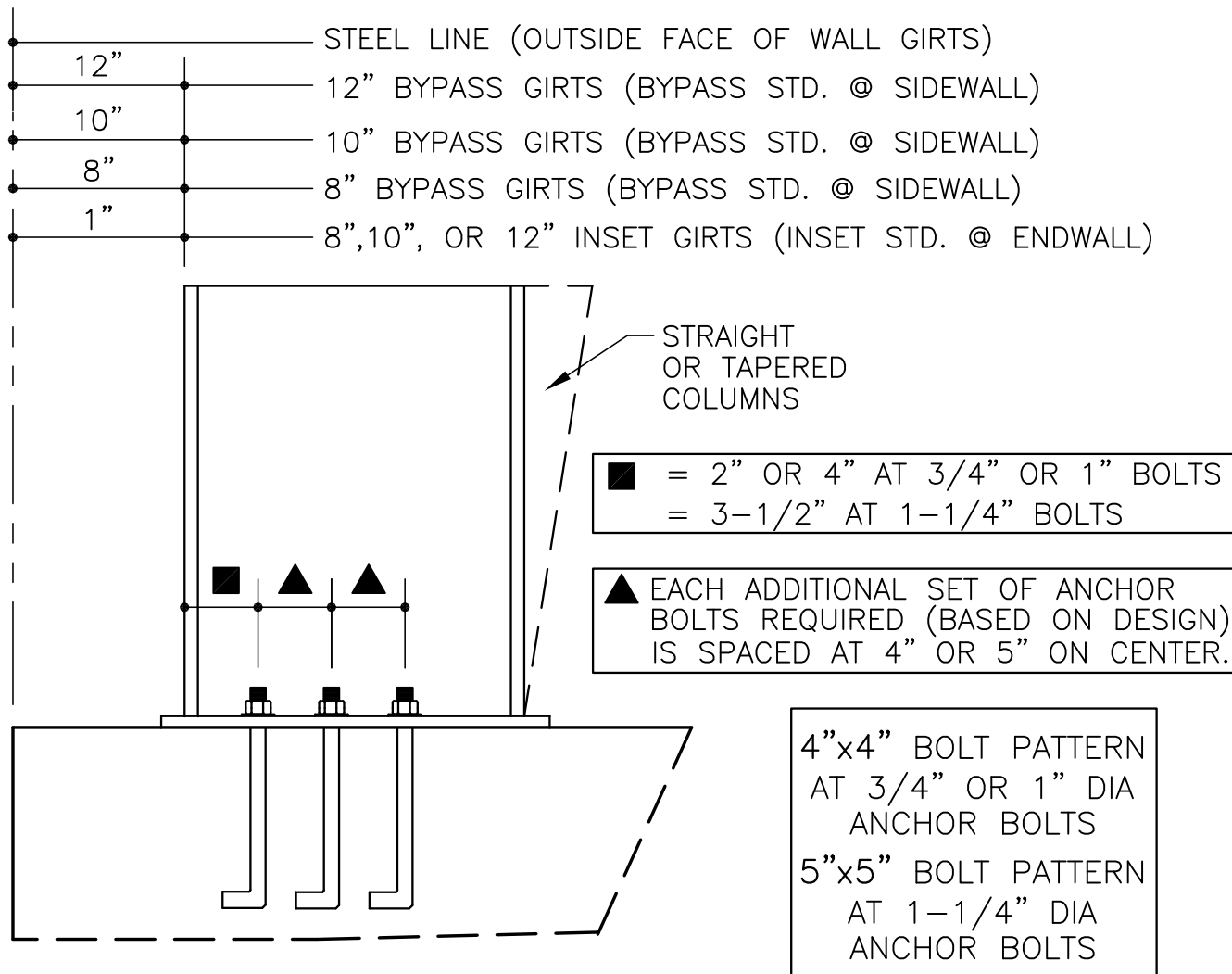


\*NOTE: AT RIGID FRAME ENDWALLS, 1'-4" IS STANDARD SETBACK. THIS DIMENSION WILL SOMETIMES INCREASE DUE TO AUXILIARY CRANE COLUMN DEPTHS ON CRANE JOBS.



# PRODUCT & ENGINEERING MANUAL

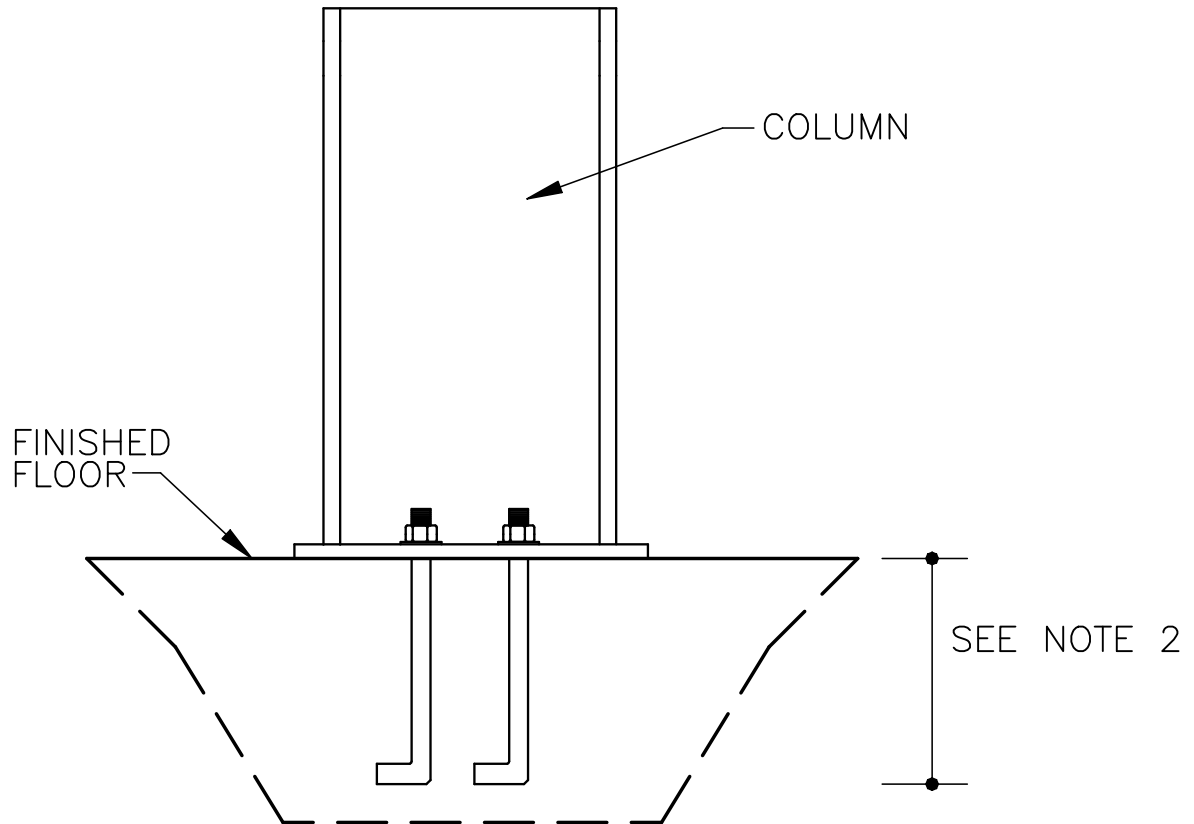
## AB0020PE – SIDEWALL OR ENDWALL COLUMN SETBACK





# PRODUCT & ENGINEERING MANUAL

## AB0030PE – COLUMN AT FINISH FLOOR



### NOTES

1. THIS CONDITION IS STANDARD AT ALL COLUMNS. IF COLUMN IS TO BE RECESSED BELOW FINISH FLOOR (AB0040PE), IT MUST BE REQUESTED AND QUOTED AS AN OPTION.
2. ANCHOR BOLT LENGTH TO BE DETERMINED BY FOUNDATION ENGINEER FOR APPROPRIATE REACTIONS AND FOUNDATION CONDITIONS.

LAST REVISION  
DATE: 08/14/08  
BY: RJF CHK: AAJ

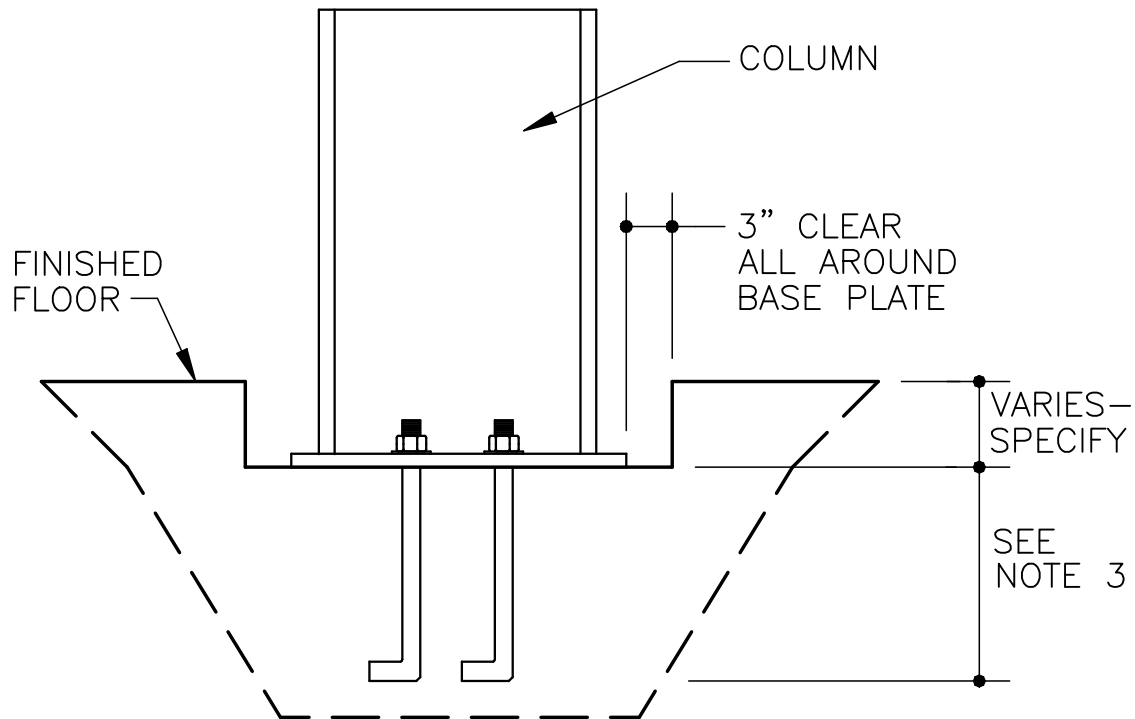
DETAIL NAME IF APPLICABLE  
**AB0030PE.DWG**

**10.0.6**



# PRODUCT & ENGINEERING MANUAL

## AB0040PE – COLUMN BASE POCKET



### NOTES

1. COLUMNS MAY BE PLACED IN POCKET TO CONCEAL BASE PLATE AND ANCHOR BOLTS.
2. THIS CONDITION MUST BE REQUESTED AND QUOTED AS AN OPTIONAL CONDITION. THE STANDARD CONDITION IS FOR THE BASE PLATE TO BE AT FINISHED FLOOR.
3. ANCHOR BOLT LENGTH TO BE DETERMINED BY FOUNDATION ENGINEER FOR APPROPRIATE REACTIONS AND FOUNDATION CONDITIONS.

LAST REVISION  
DATE: 08/14/08  
BY: RJF CHK: AAJ

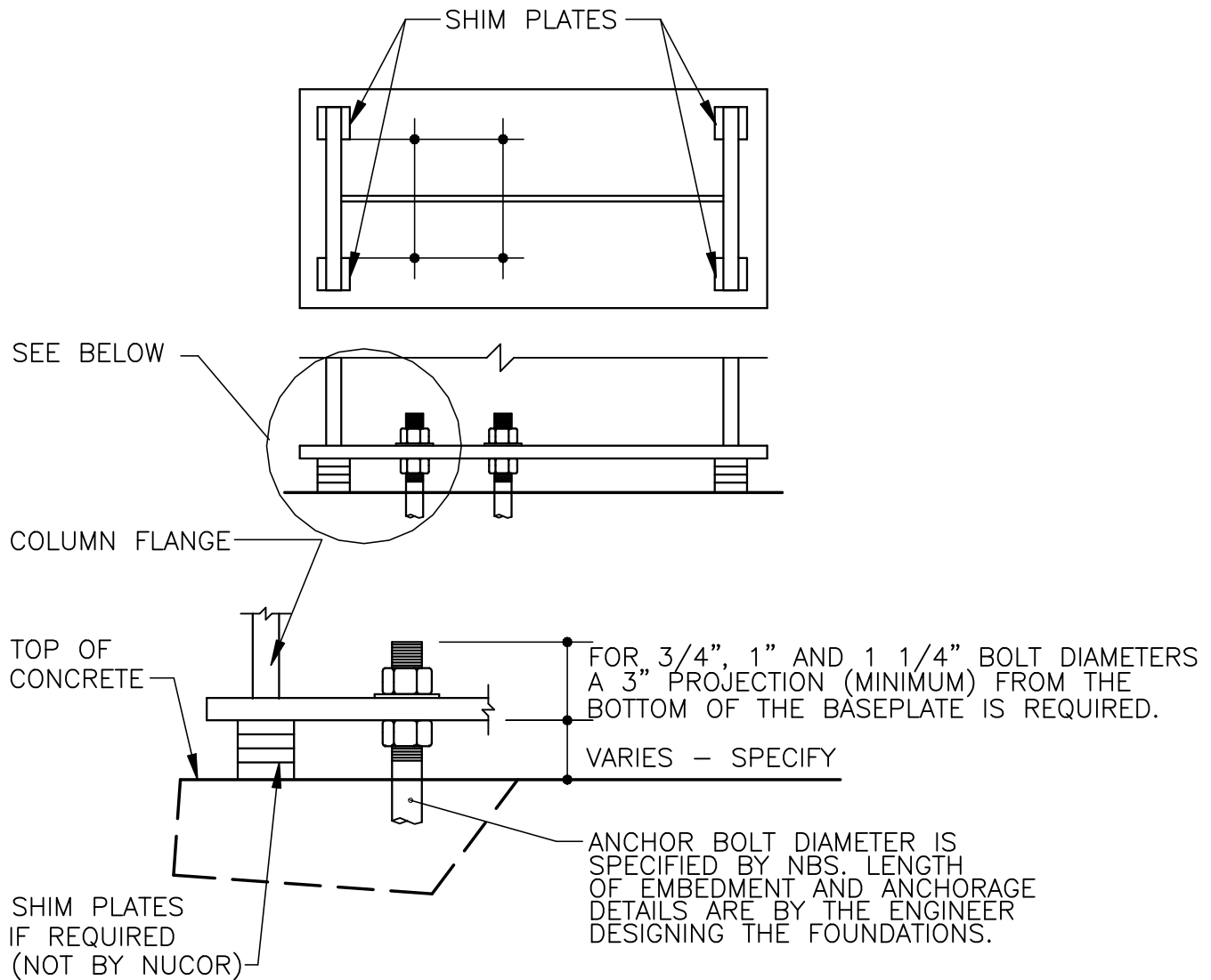
DETAIL NAME IF APPLICABLE  
**AB0040PE.DWG**

**10.0.7**



# PRODUCT & ENGINEERING MANUAL

## AB0050PE – BASE PLATE WITH GROUT REQUIRED



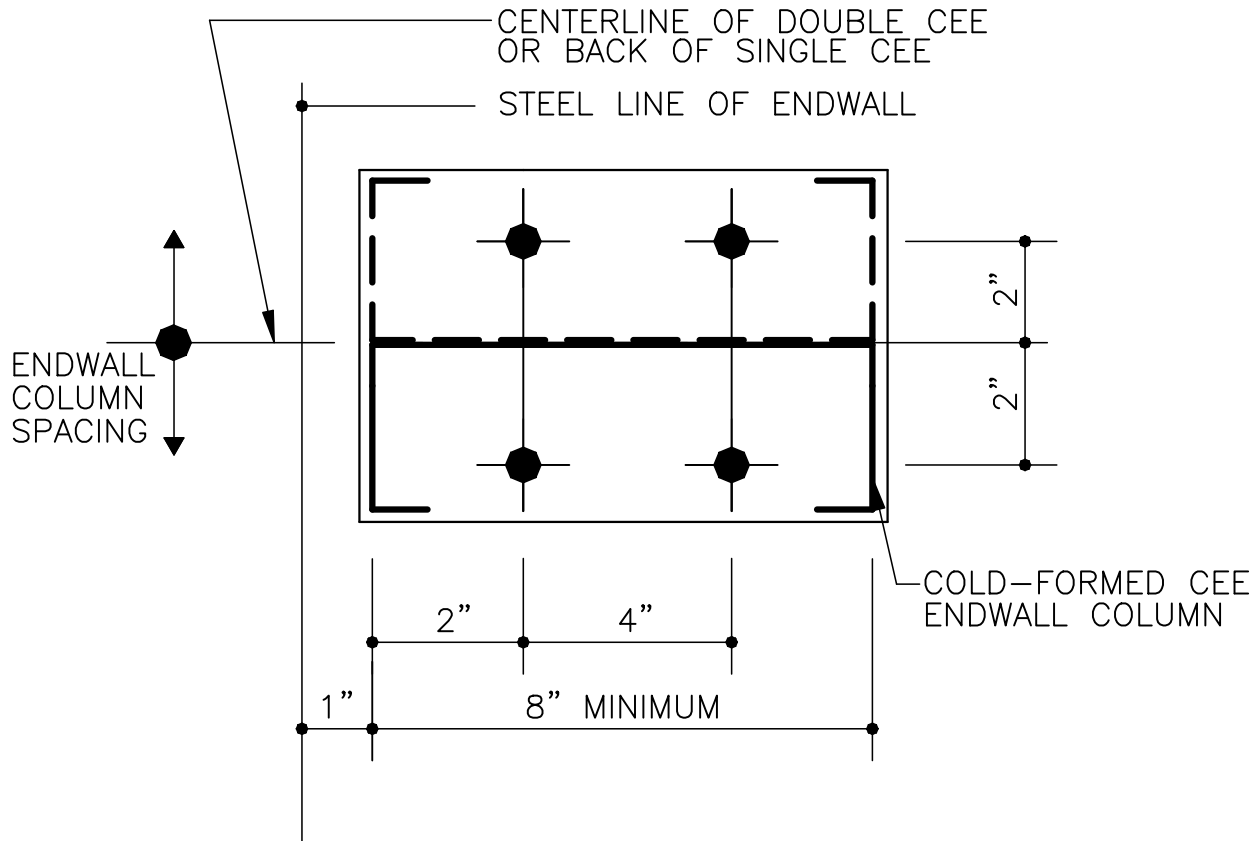




# PRODUCT & ENGINEERING MANUAL

## AB0060PE – ENDWALL COLUMN INSET DETAIL – (COLD FORM)

NOTE: FOR EASE OF FABRICATION, COLD-FORMED COLUMNS MAY HAVE (6) BASEPLATE HOLES. ANCHOR BOLTS ARE REQUIRED AS SHOWN ON THE DETAILS.



### NOTE

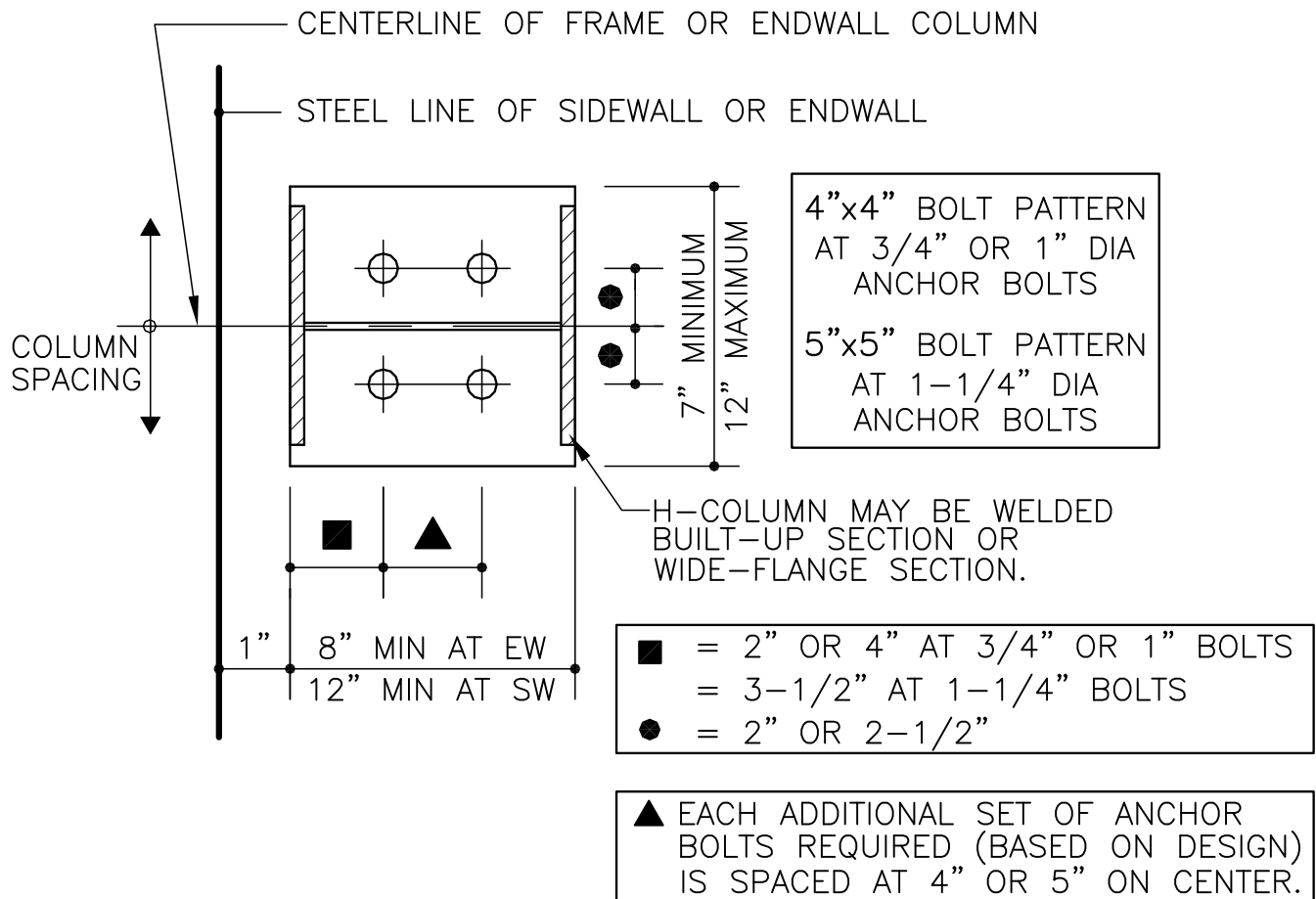
1. NUCOR DESIGNS THE ANCHOR BOLT FOR SHEAR AND TENSION FORCES, BUT DOES NOT DETERMINE THE EMBEDMENT LENGTH. THIS IS THE RESPONSIBILITY OF THE FOUNDATION ENGINEER.





# PRODUCT & ENGINEERING MANUAL

## AB0080PE – ENDWALL COLUMN INSET DETAIL – (BUILT - UP)



### NOTE

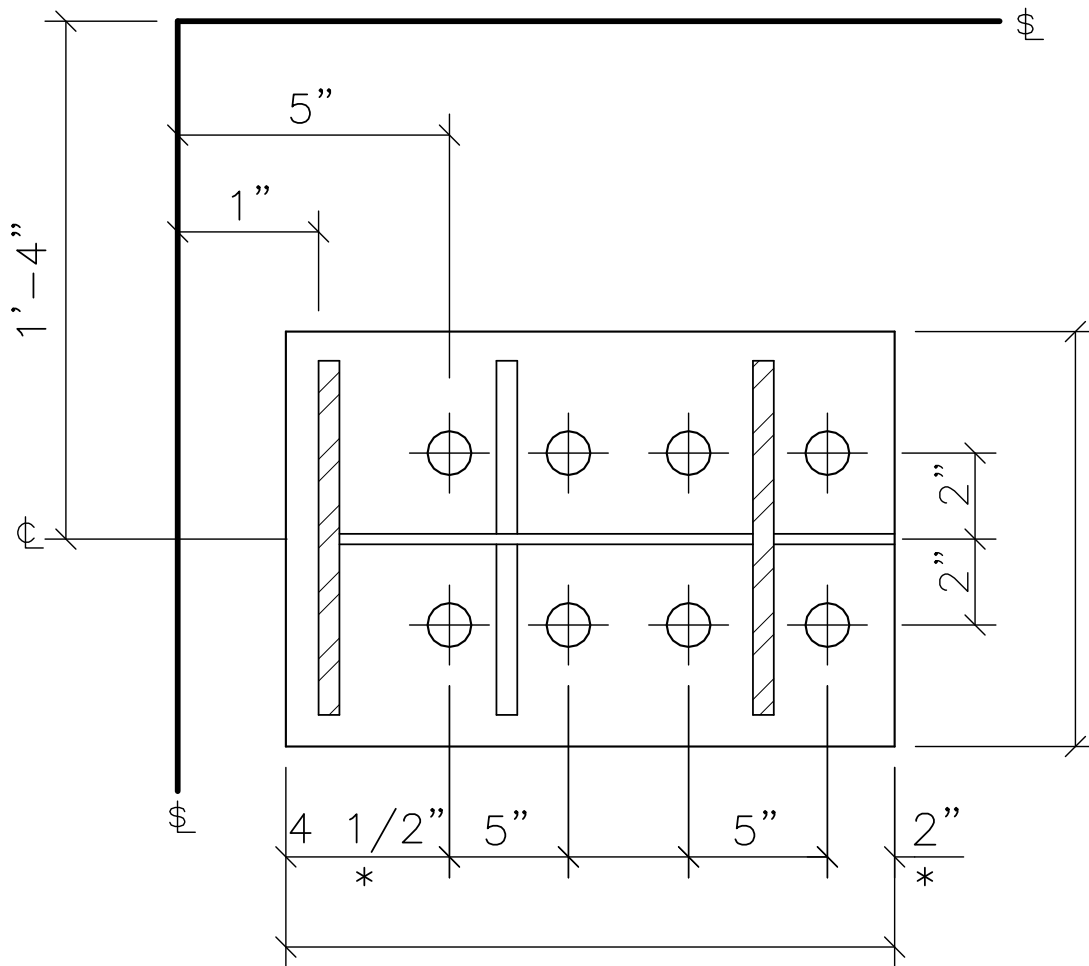
1. NUCOR DESIGNS THE ANCHOR BOLT FOR SHEAR AND TENSION FORCES, BUT DOES NOT DETERMINE THE EMBEDMENT LENGTH. THIS IS THE RESPONSIBILITY OF THE FOUNDATION ENGINEER.



# PRODUCT & ENGINEERING MANUAL

## FIXED BASE POST & BEAM CORNER COLUMNS (INSET GIRT CONDITIONS)

### BU8LT PE



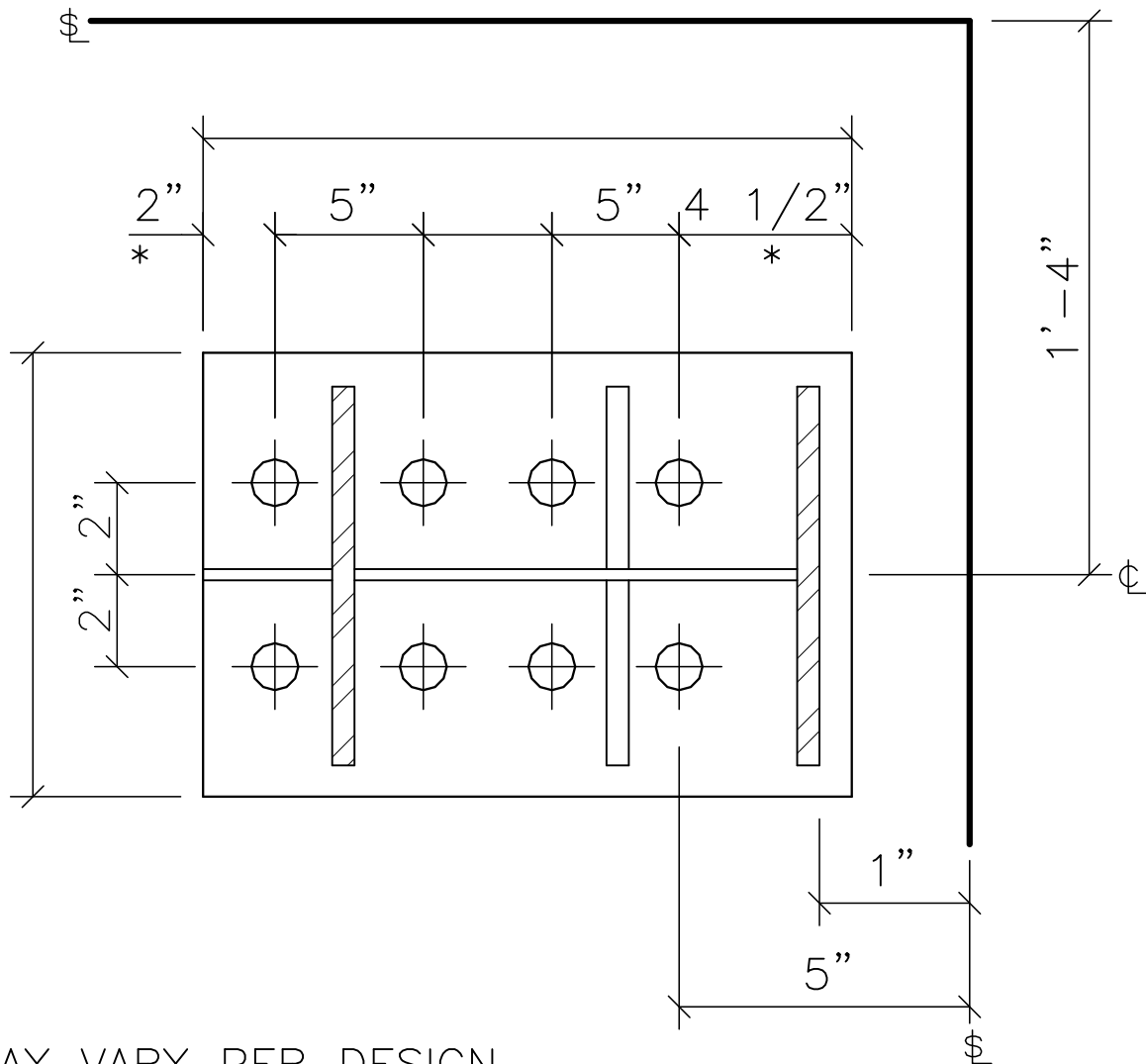
\*MAY VARY PER DESIGN

(8)  $\emptyset$  ANCHOR  
BOLTS WITH A 3" PROJECTION



# PRODUCT & ENGINEERING MANUAL

## BU8RT PE

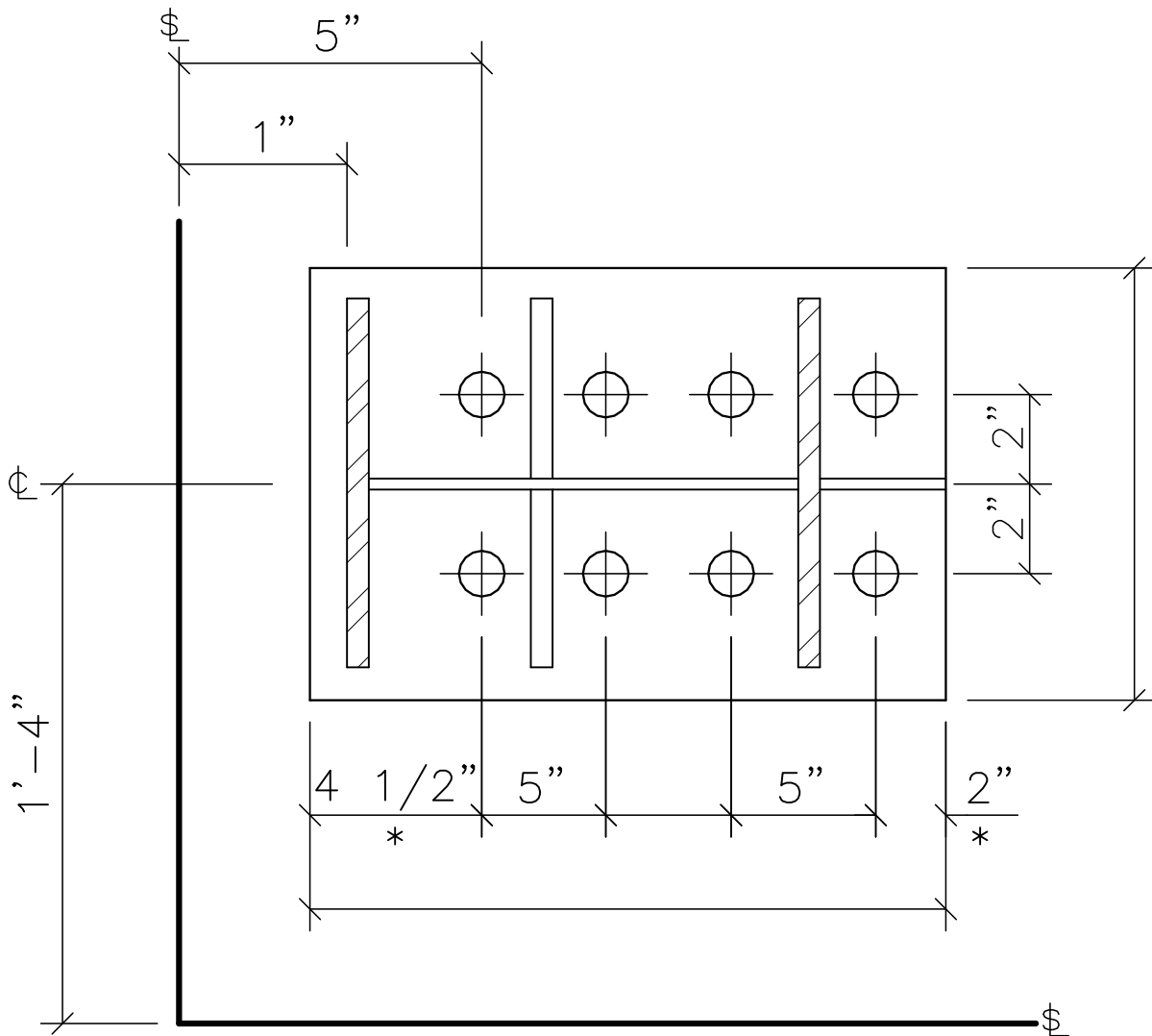


(8)	Ø ANCHOR BOLTS WITH A 3" PROJECTION
-----	--



# PRODUCT & ENGINEERING MANUAL

## BU8LB PE



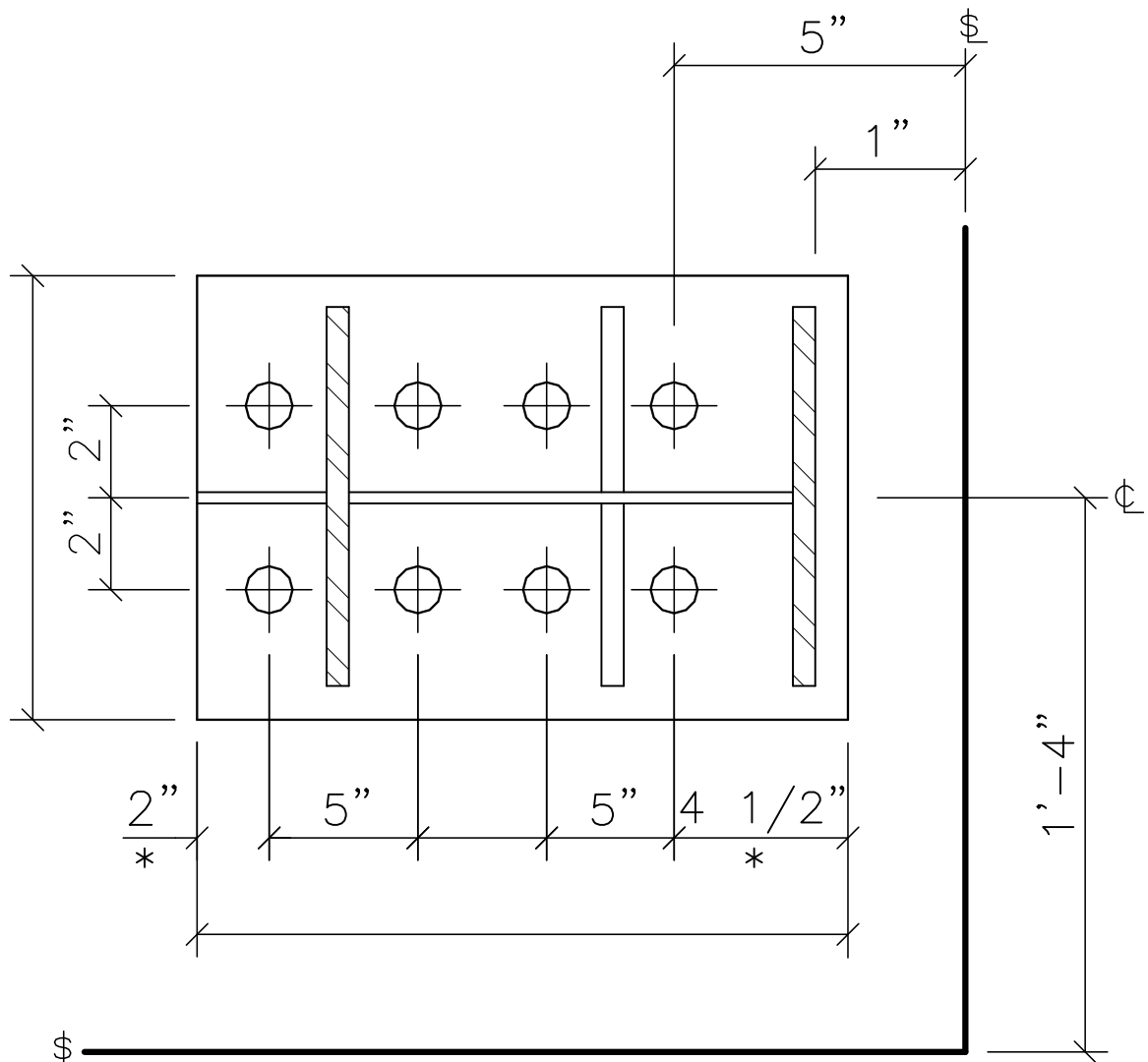
\*MAY VARY PER DESIGN

(8)  $\emptyset$  ANCHOR  
BOLTS WITH A 3" PROJECTION



# PRODUCT & ENGINEERING MANUAL

## BU8RB PE



\*MAY VARY PER DESIGN

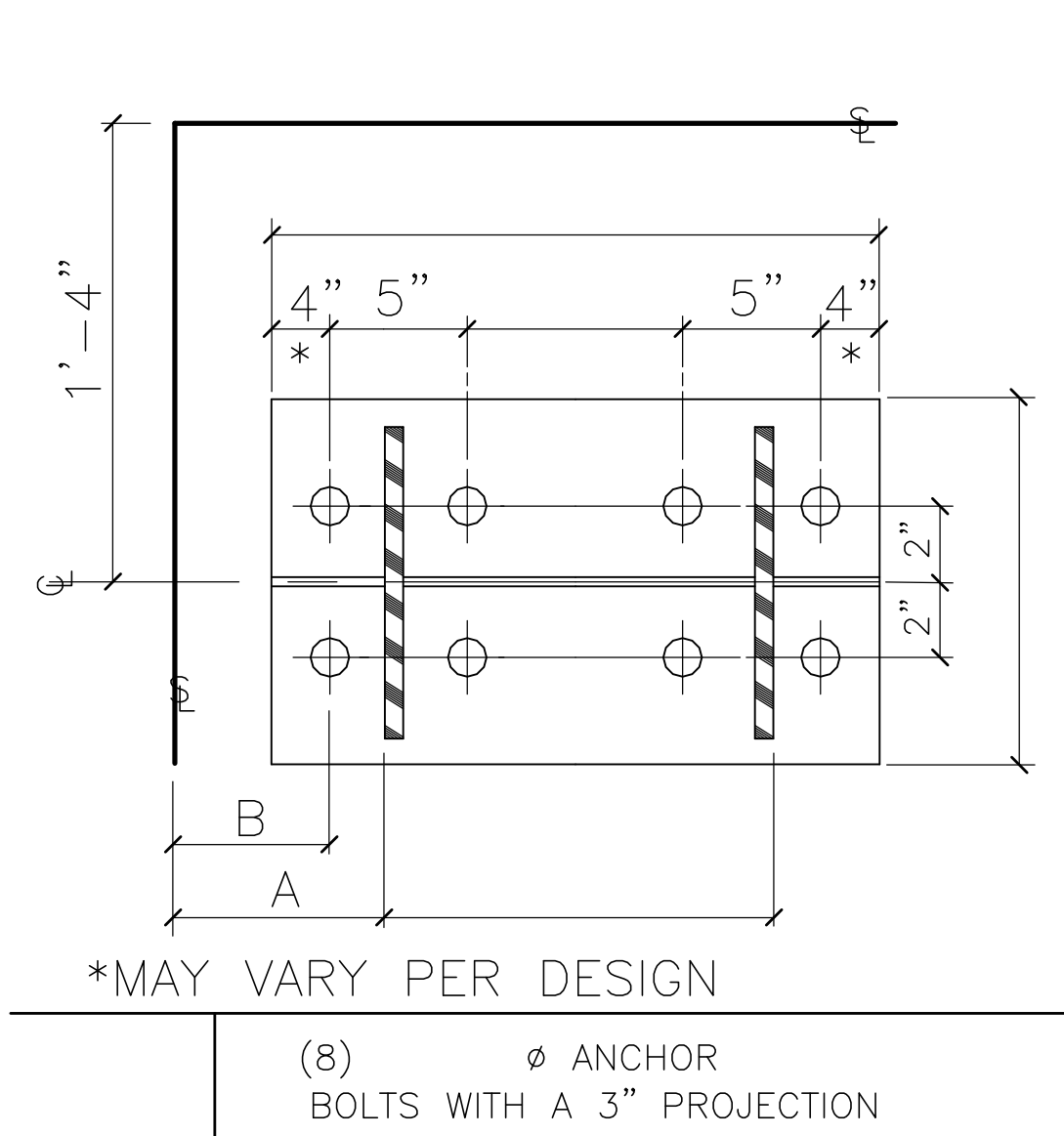
(8)  $\emptyset$  ANCHOR  
BOLTS WITH A 3" PROJECTION



# PRODUCT & ENGINEERING MANUAL

## FIXED BASE POST & BEAM CORNER COLUMNS (BYPASS GIRT CONDITION)

### BUB8LTPE



A = 8", 10", 12"

B = "A" MINUS 2"

LAST REVISION  
DATE: 09/27/11  
BY: RT CHK: EGB

DETAIL NAME IF APPLICABLE  
**BUB8LTPE.DWG**

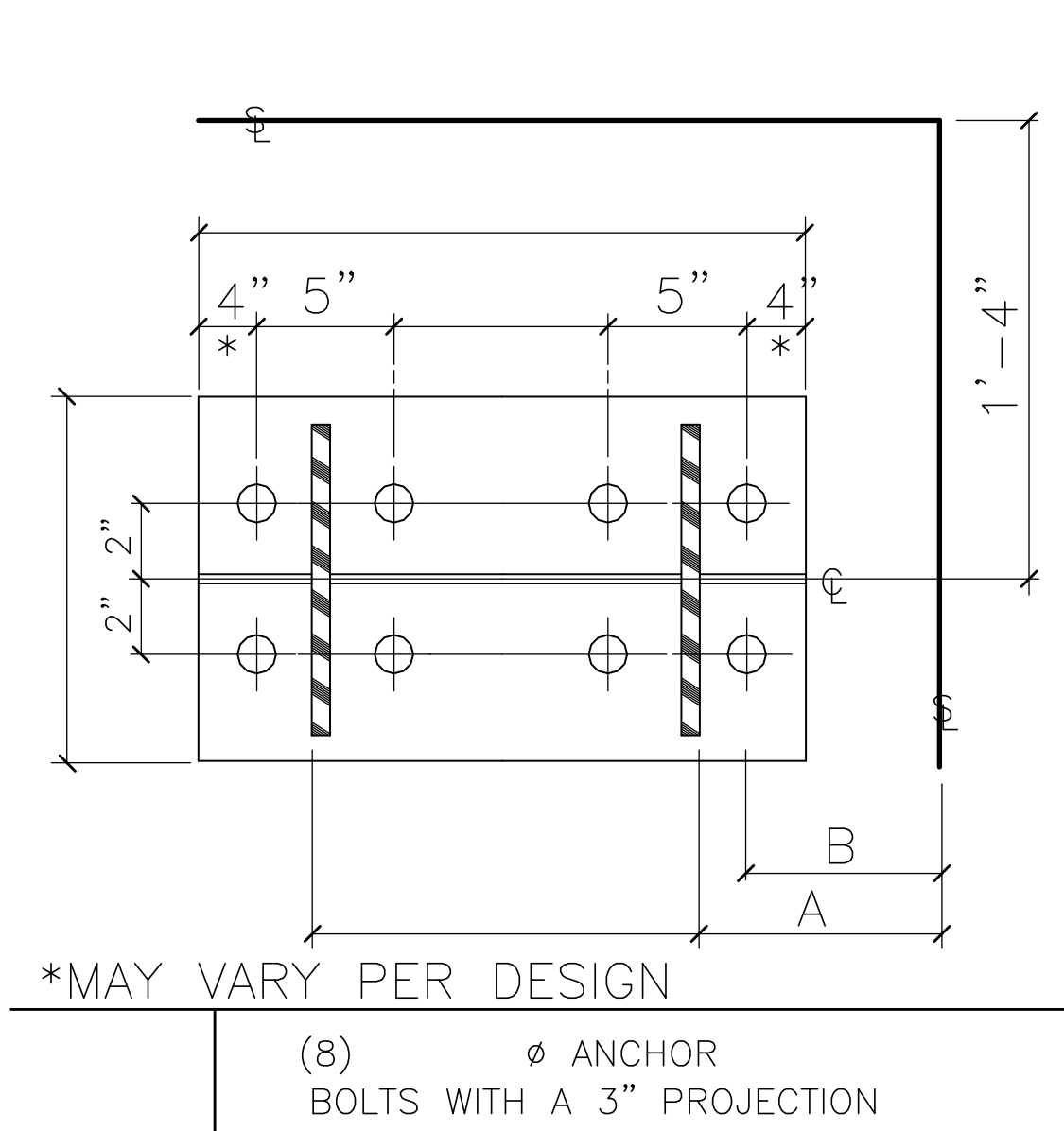
10.0.16





# PRODUCT & ENGINEERING MANUAL

## BUB8RTPE



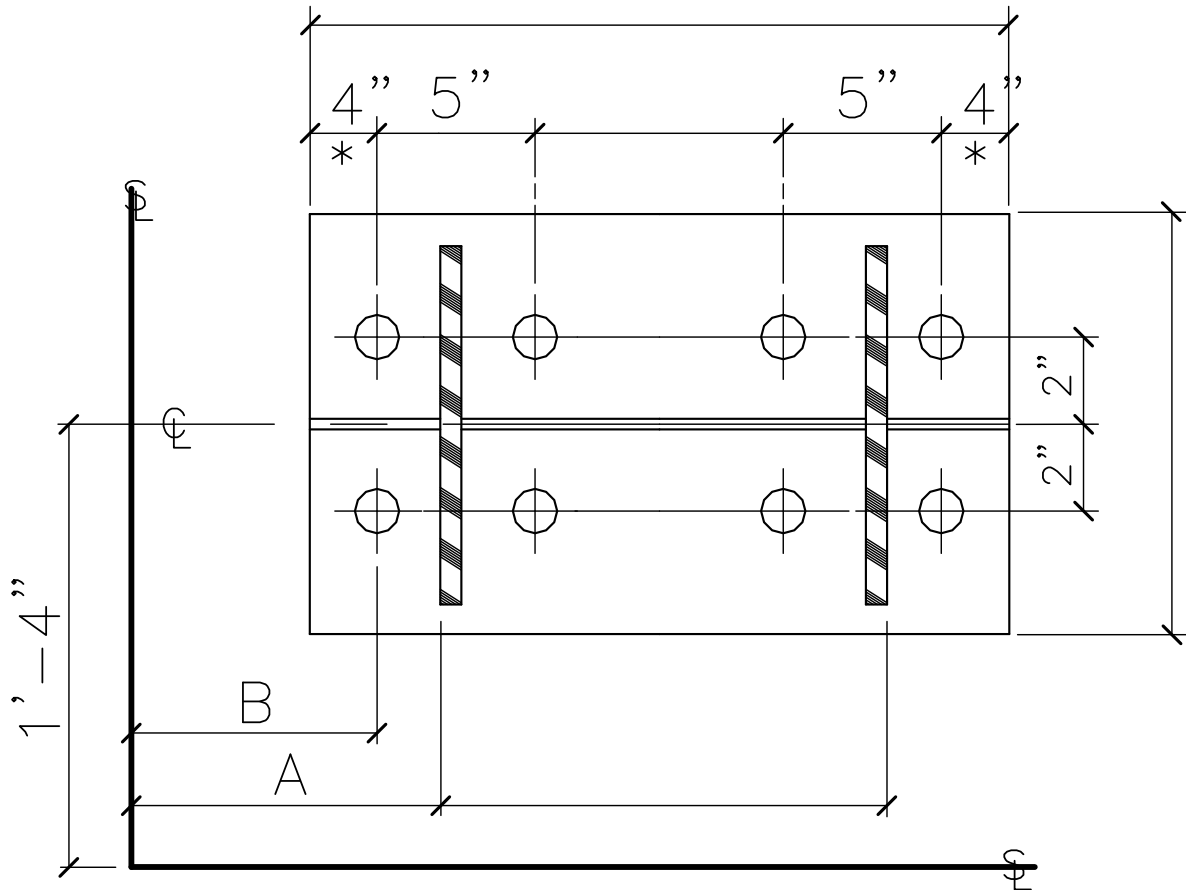
A = 8", 10", 12"

B = "A" MINUS 2"



# PRODUCT & ENGINEERING MANUAL

## BUB8LBPE



\*MAY VARY PER DESIGN

(8)  $\varnothing$  ANCHOR  
BOLTS WITH A 3" PROJECTION

A = 8", 10", 12"

B = "A" MINUS 2"

LAST REVISION  
DATE: 09/27/11  
BY: RT CHK: EGB

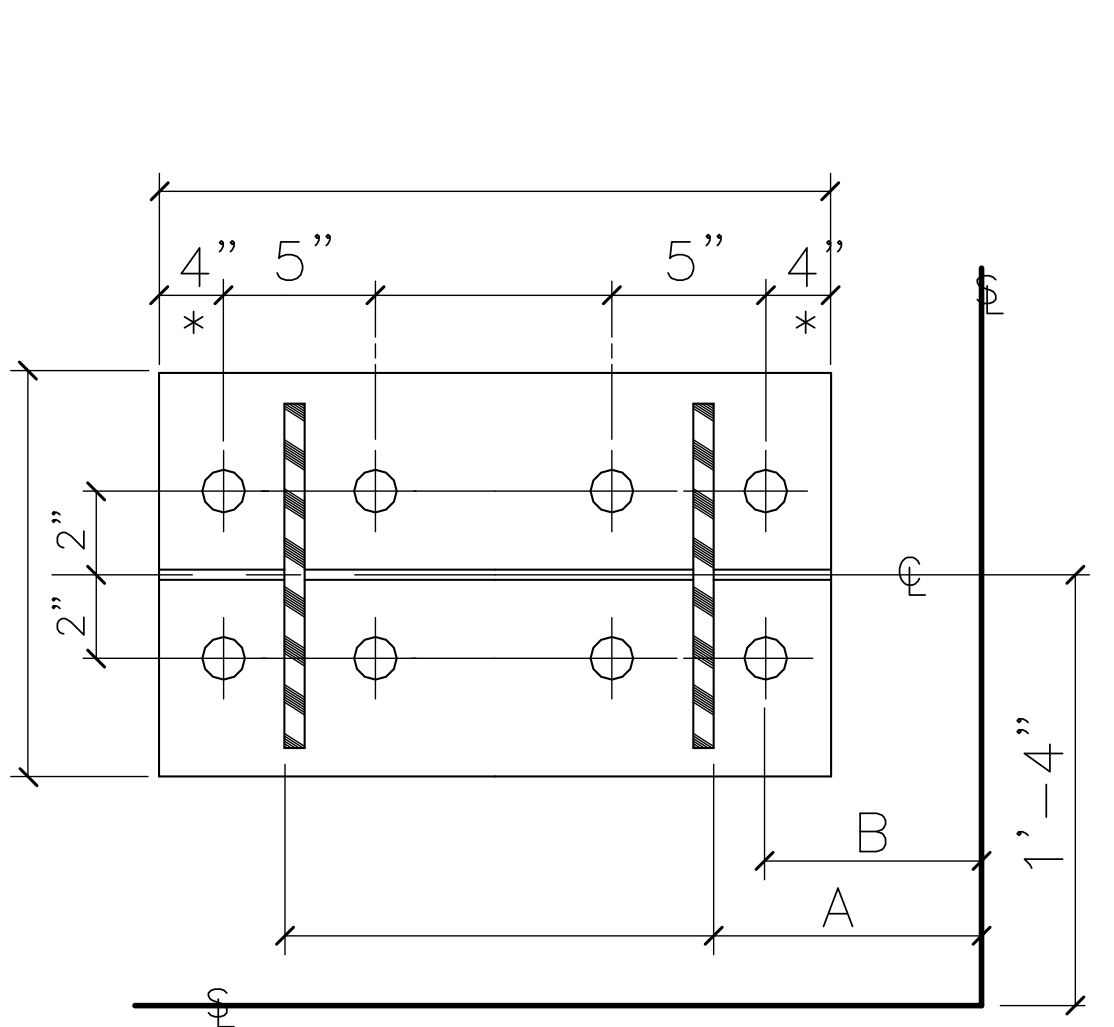
DETAIL NAME IF APPLICABLE  
**BUB8LBPE.DWG**

**10.0.18**



# PRODUCT & ENGINEERING MANUAL

## BUB8RBPE



\*MAY VARY PER DESIGN

(8)  $\emptyset$  ANCHOR  
BOLTS WITH A 3" PROJECTION

A = 8", 10", 12"

B = "A" MINUS 2"

LAST REVISION  
DATE: 09/27/11  
BY: RT CHK: EGB

DETAIL NAME IF APPLICABLE  
**BUB8RBPE.DWG**

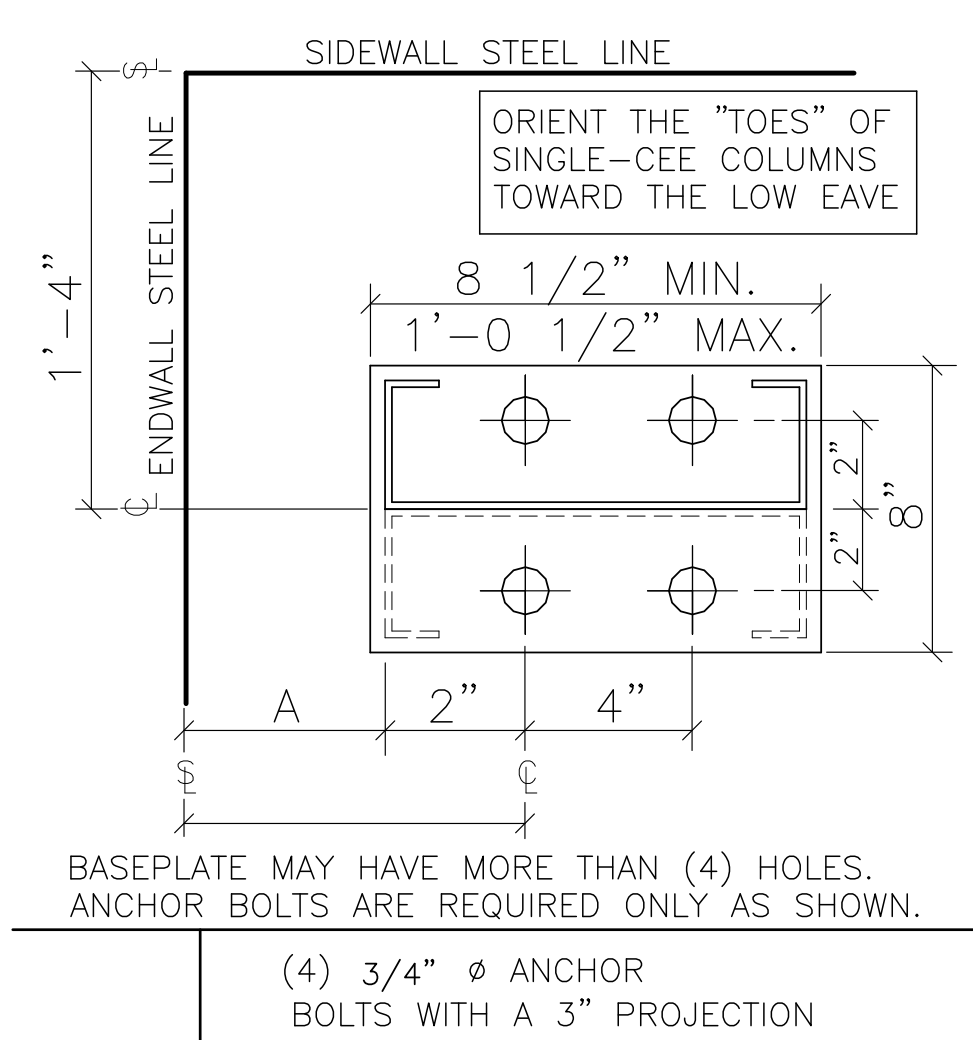
**10.0.19**



# PRODUCT & ENGINEERING MANUAL

## SINGLE OR DOUBLE CEE POST & BEAM CORNER COLUMNS

### C4LT PE



- Double Cee Columns are factory welded together. Base Plates and Cap Plates are also factory welded.

A =  
 0" - FLUSH  
 1" - INSET  
 8" - 8" BYPASS GIRTS  
 10" - 10" BYPASS GIRTS  
 12" - 12" BYPASS GIRTS

LAST REVISION  
 DATE: 08/14/08  
 BY: RJF CHK: AAJ

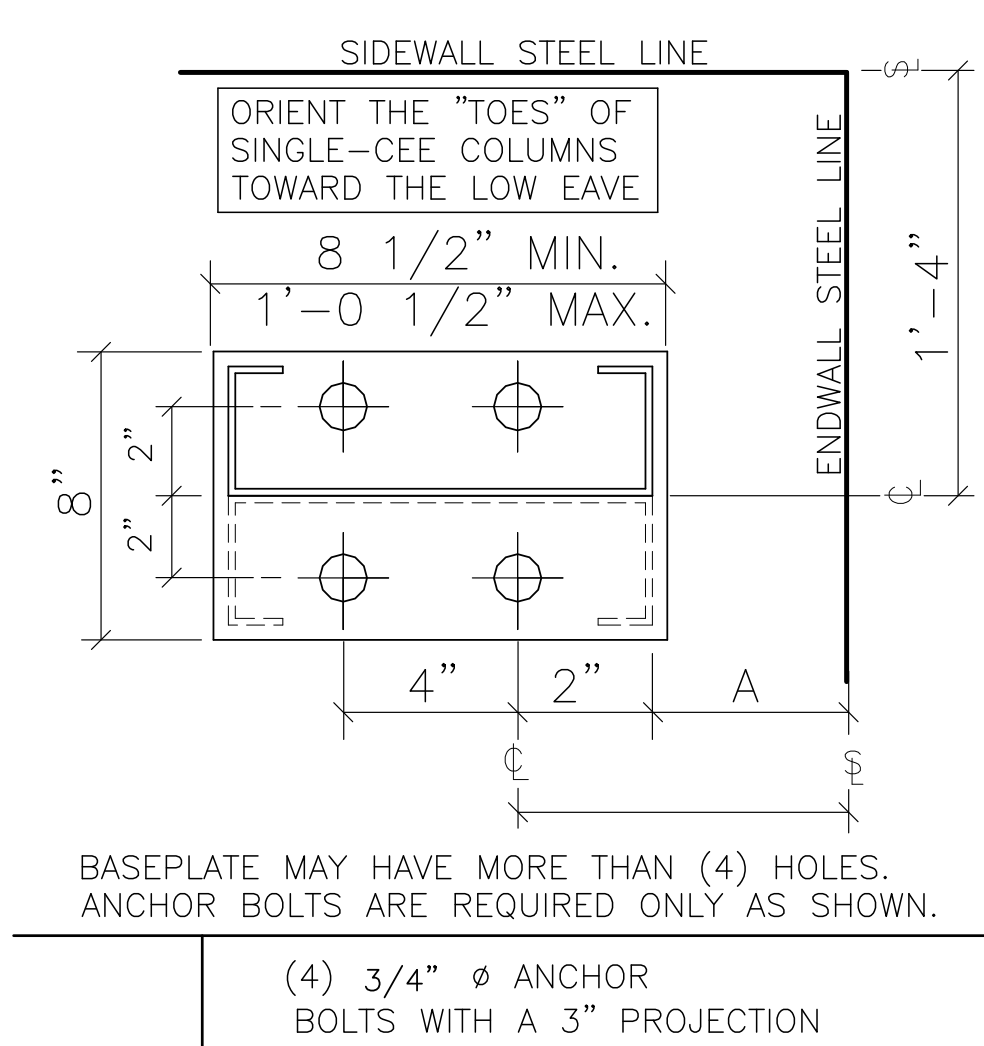
DETAIL NAME IF APPLICABLE  
**C4LT\_PE.DWG**

**10.0.20**



# PRODUCT & ENGINEERING MANUAL

## C4RT PE



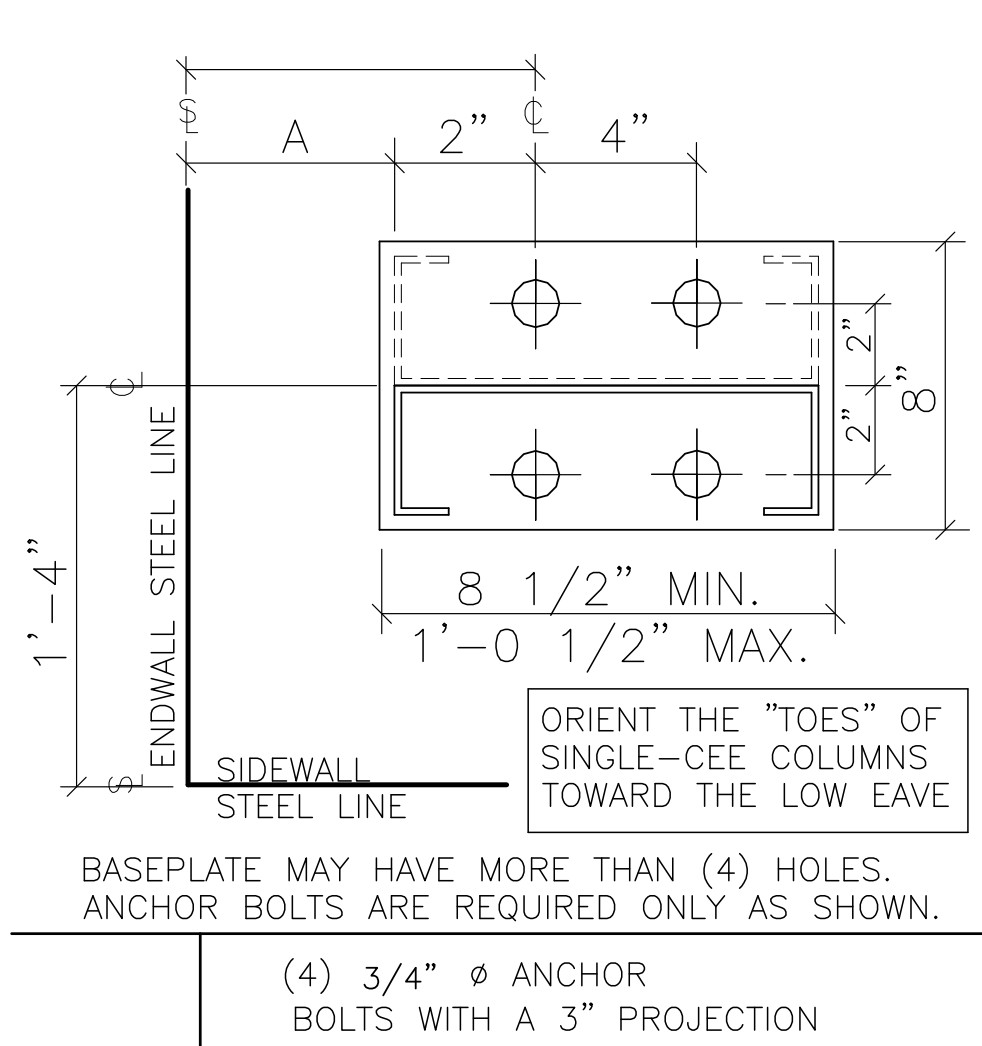
- Double Cee Columns are factory welded together. Base Plates and Cap Plates are also factory welded.

A =  
 0" – FLUSH  
 1" – INSET  
 8" – 8" BYPASS GIRTS  
 10" – 10" BYPASS GIRTS  
 12" – 12" BYPASS GIRTS



# PRODUCT & ENGINEERING MANUAL

## C4LB PE



- Double Cee Columns are factory welded together. Base Plates and Cap Plates are also factory welded.

A =     0" – FLUSH  
           1" – INSET  
           8" – 8" BYPASS GIRTS  
           10" – 10" BYPASS GIRTS  
           12" – 12" BYPASS GIRTS

LAST REVISION  
 DATE: 08/14/08  
 BY: RJF CHK: AAJ

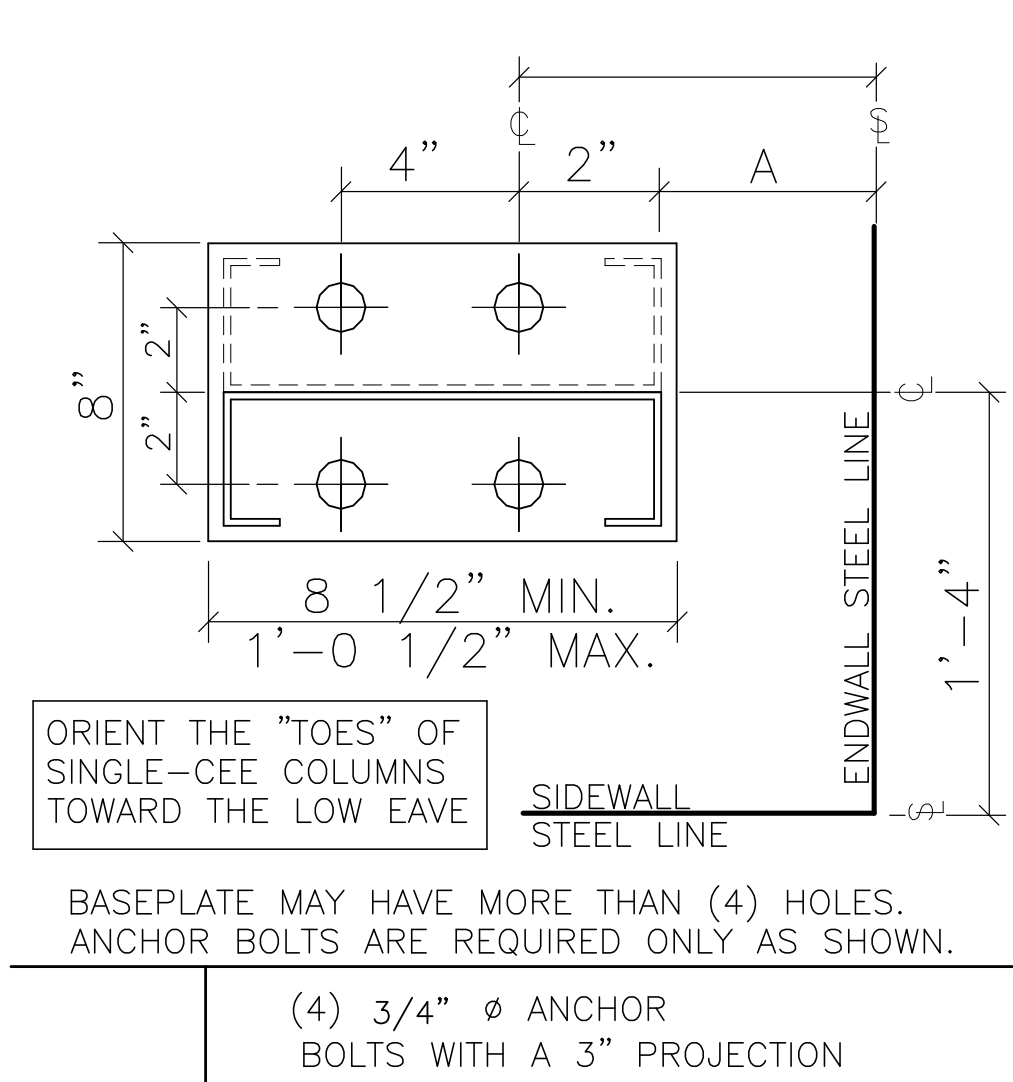
DETAIL NAME IF APPLICABLE  
**C4LB\_PE.DWG**

**10.0.22**



# PRODUCT & ENGINEERING MANUAL

## C4RB PE



- Double Cee Columns are factory welded together. Base Plates and Cap Plates are also factory welded.

A =    0" – FLUSH  
          1" – INSET  
          8" – 8" BYPASS GIRTS  
          10" – 10" BYPASS GIRTS  
          12" – 12" BYPASS GIRTS

LAST REVISION  
 DATE: 08/14/08  
 BY: RJF CHK: AAJ

DETAIL NAME IF APPLICABLE  
**C4RB\_PE.DWG**

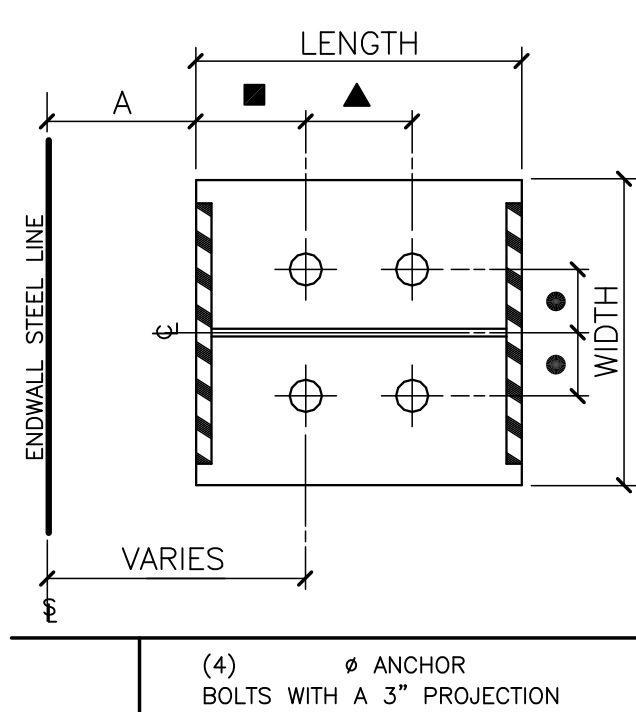
**10.0.23**



# PRODUCT & ENGINEERING MANUAL

## BUILT - UP ENDWALL COLUMNS

### BU4LX PE



4"x4" BOLT PATTERN  
AT 3/4" OR 1" DIA  
ANCHOR BOLTS

5"x5" BOLT PATTERN  
AT 1-1/4" DIA  
ANCHOR BOLTS

■ = 2" OR 4" AT 3/4" OR 1" BOLTS  
= 3-1/2" AT 1-1/4" BOLTS  
● = 2" OR 2-1/2"

▲ EACH ADDITIONAL SET OF ANCHOR  
BOLTS REQUIRED (BASED ON DESIGN)  
IS SPACED AT 4" OR 5" ON CENTER.

A =  
0" – FLUSH  
1" – INSET  
8" – 8" BYPASS GIRTS  
10" – 10" BYPASS GIRTS  
12" – 12" BYPASS GIRTS

LAST REVISION  
DATE: 08/28/09  
BY: DLC CHK: AES

DETAIL NAME IF APPLICABLE  
**BU4LX\_PE.DWG**

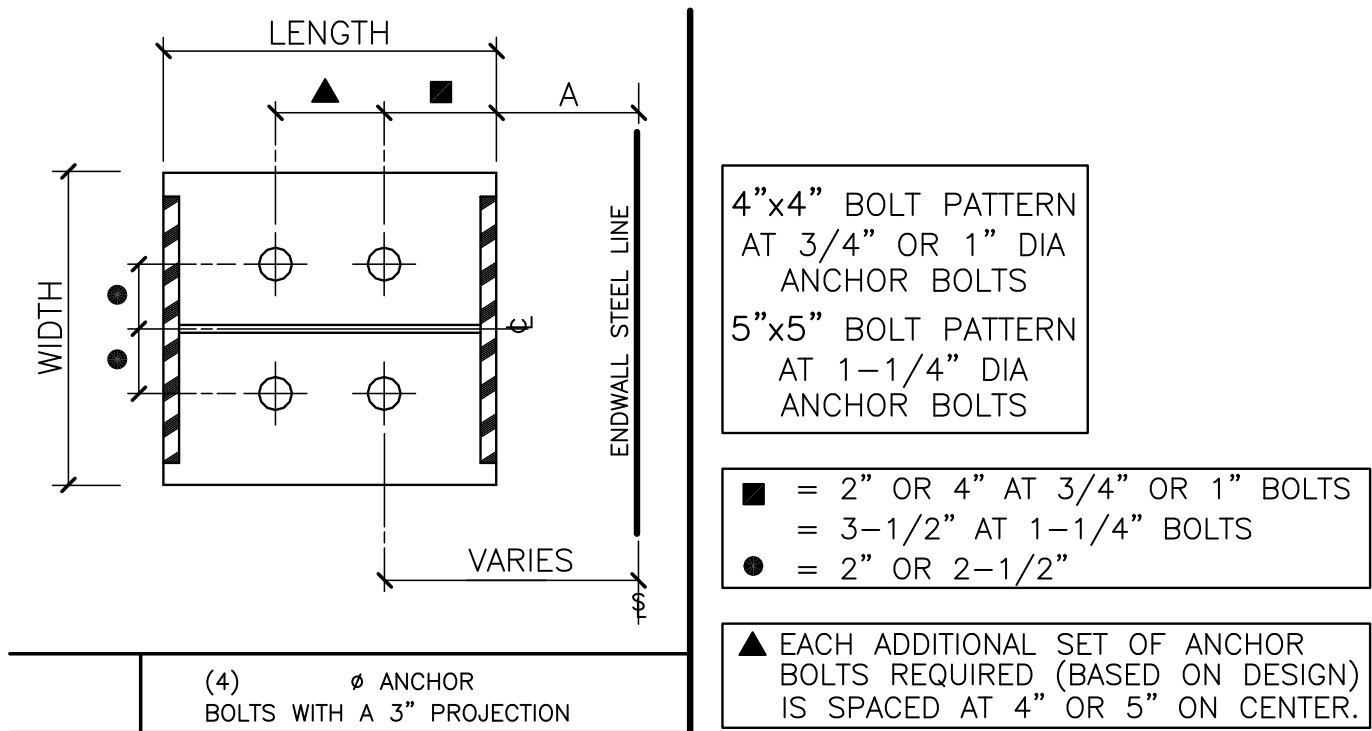
**10.0.24**





# PRODUCT & ENGINEERING MANUAL

## BU4RX PE



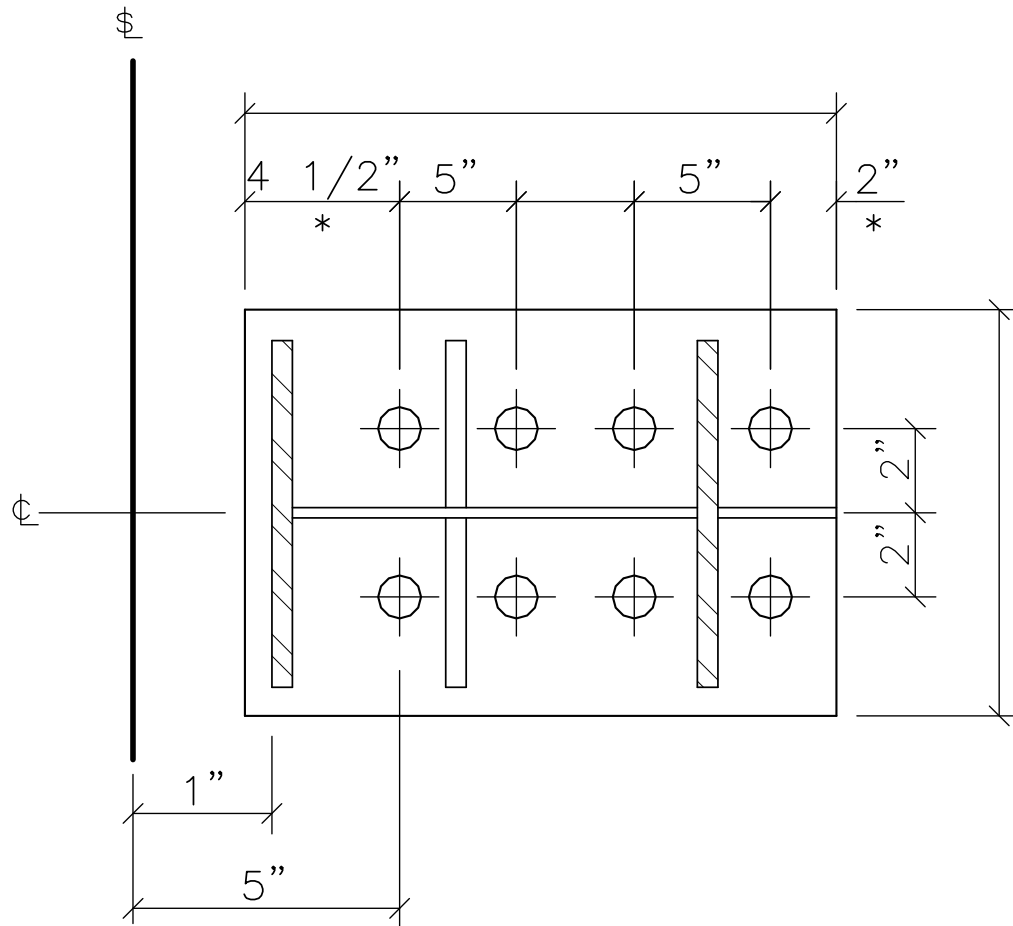
A = 0" – FLUSH  
 1" – INSET  
 8" – 8" BYPASS GIRTS  
 10" – 10" BYPASS GIRTS  
 12" – 12" BYPASS GIRTS



# PRODUCT & ENGINEERING MANUAL

## FIXED BASE INTERMEDIATE ENDWALL COLUMNS

### BU8LX PE



\*MAY VARY PER DESIGN

(8)                      ⌀ ANCHOR BOLTS WITH A 3" PROJECTION
---

\*\*Inset Detail Shown

LAST REVISION  
DATE: 09/27/11  
BY: RT CHK: EGB

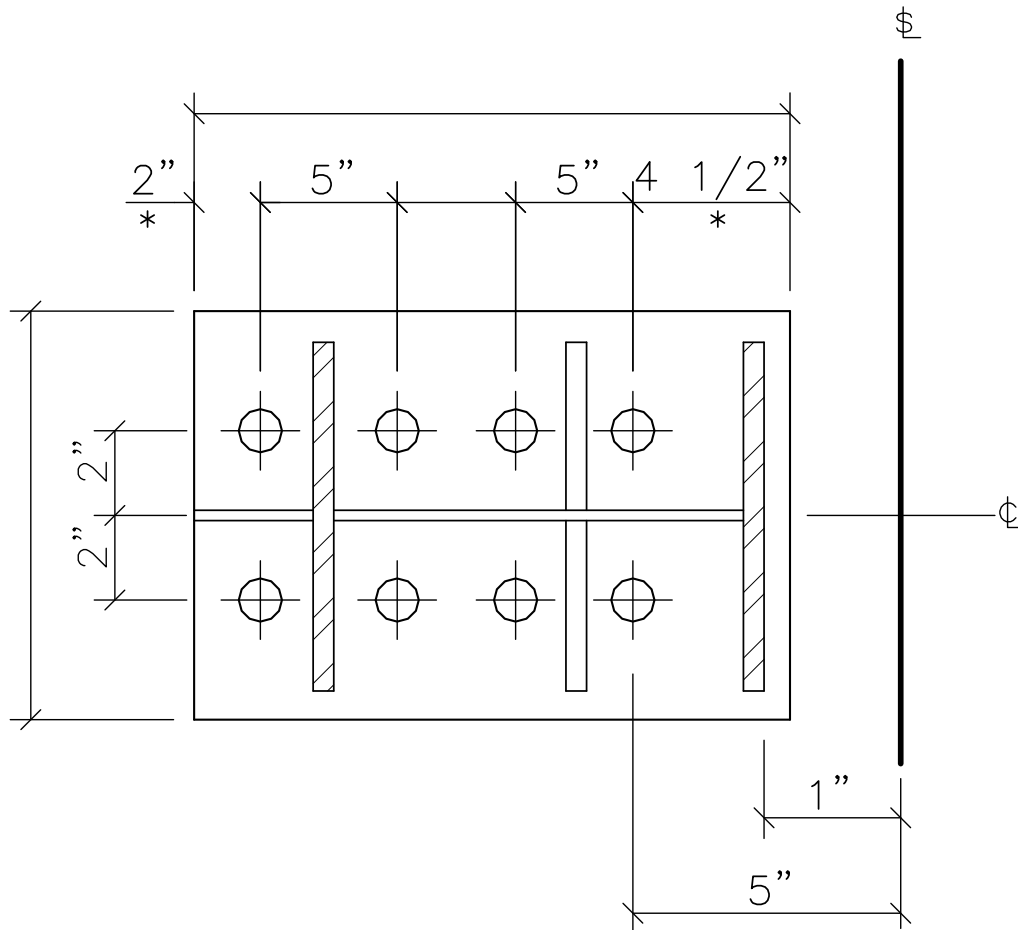
DETAIL NAME IF APPLICABLE  
**BU8LX\_PE.DWG**

**10.0.26**



# PRODUCT & ENGINEERING MANUAL

## BU8RX PE



\*MAY VARY PER DESIGN

(8)	∅ ANCHOR BOLTS WITH A 3" PROJECTION
-----	--

\*\*Inset Detail Shown

LAST REVISION  
DATE: 09/27/11  
BY: RT CHK: EGB

DETAIL NAME IF APPLICABLE  
**BU8RX\_PE.DWG**

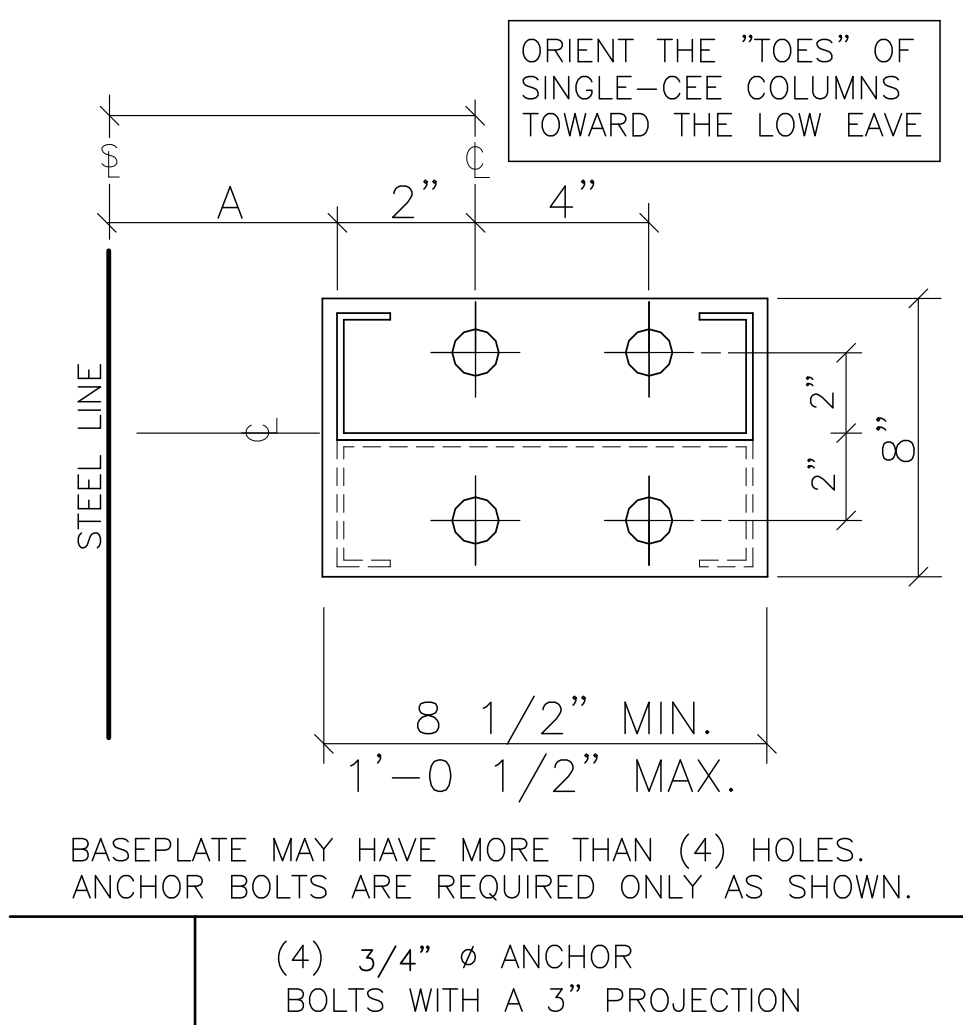
**10.0.27**



# PRODUCT & ENGINEERING MANUAL

## SINGLE OR DOUBLE CEE ENDWALL COLUMNS

### C4LI PE



- Double Cee Columns are factory welded together. Cee Column Base Plates and Cap Plates are also factory welded.

A = 0" – FLUSH  
 1" – INSET  
 8" – 8" BYPASS GIRTS  
 10" – 10" BYPASS GIRTS  
 12" – 12" BYPASS GIRTS

LAST REVISION  
 DATE: 08/14/08  
 BY: RJF CHK: AAJ

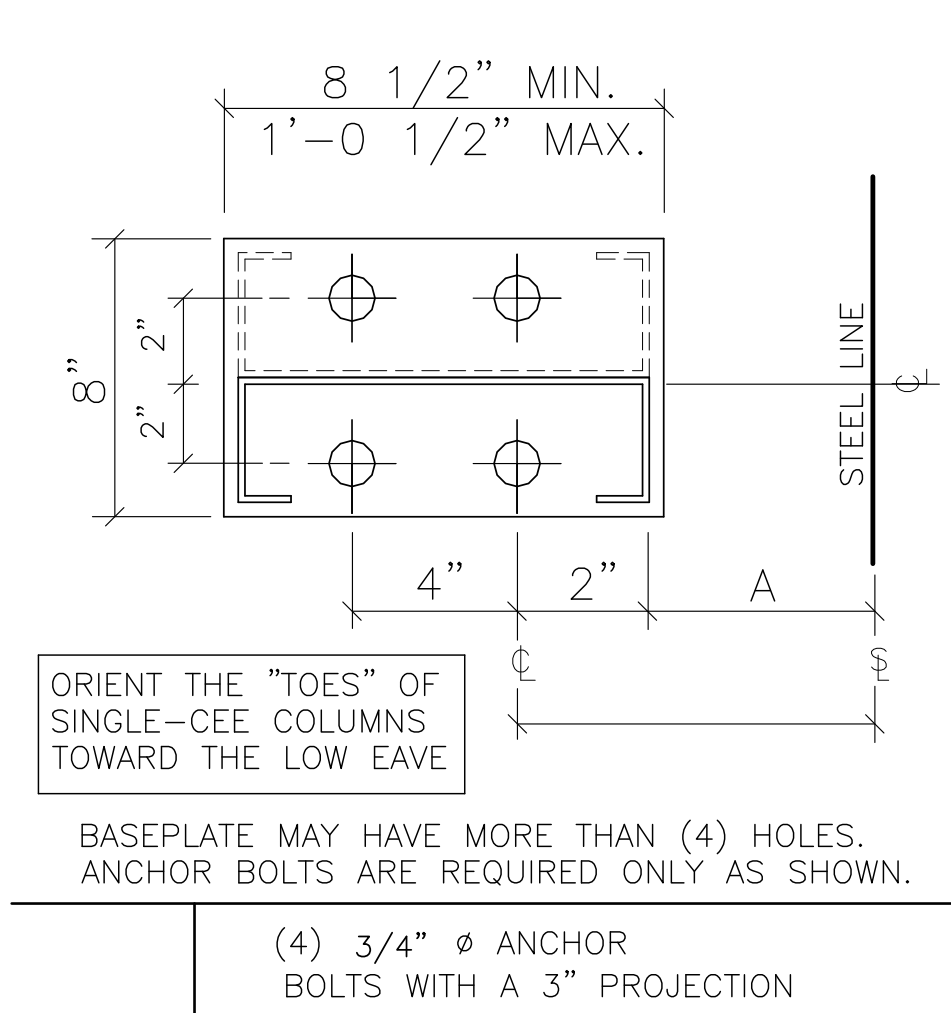
DETAIL NAME IF APPLICABLE  
**C4LI\_PE.DWG**

**10.0.28**



# PRODUCT & ENGINEERING MANUAL

## C4RI PE



- Double Cee Columns are factory welded together. Cee Column Base Plates and Cap Plates are also factory welded.

A = 0" – FLUSH  
1" – INSET  
8" – 8" BYPASS GIRTS  
10" – 10" BYPASS GIRTS  
12" – 12" BYPASS GIRTS

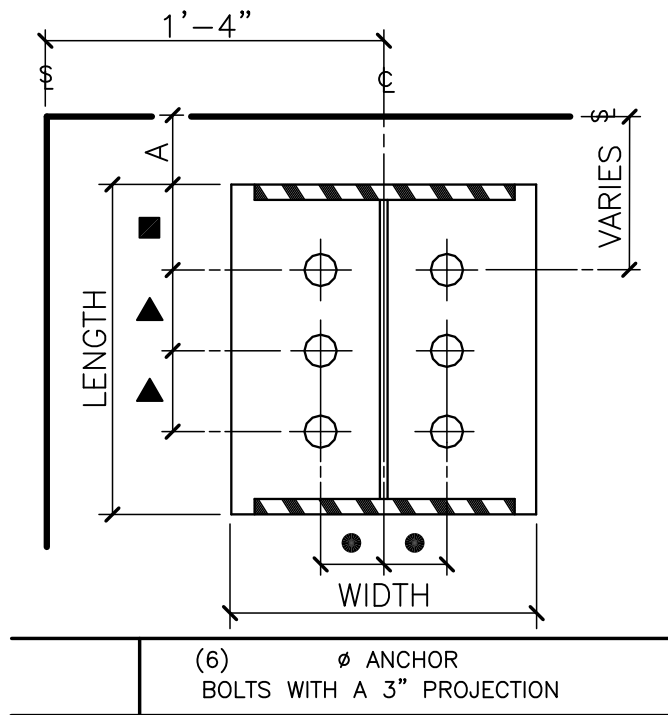


# PRODUCT & ENGINEERING MANUAL

## BUILT - UP RIGID FRAME CORNER COLUMNS

### BU6TL PE

**NOTE:** The third digit of each detail name indicates the number of anchor bolts required. For example: BU6TL requires (6) anchor bolts. BU4TL requires (4) anchor bolts.



4"x4" BOLT PATTERN  
AT 3/4" OR 1" DIA  
ANCHOR BOLTS  
5"x5" BOLT PATTERN  
AT 1-1/4" DIA  
ANCHOR BOLTS

■ = 2" OR 4" AT 3/4" OR 1" BOLTS  
= 3-1/2" AT 1-1/4" BOLTS  
● = 2" OR 2-1/2"

▲ EACH ADDITIONAL SET OF ANCHOR  
BOLTS REQUIRED (BASED ON DESIGN)  
IS SPACED AT 4" OR 5" ON CENTER.

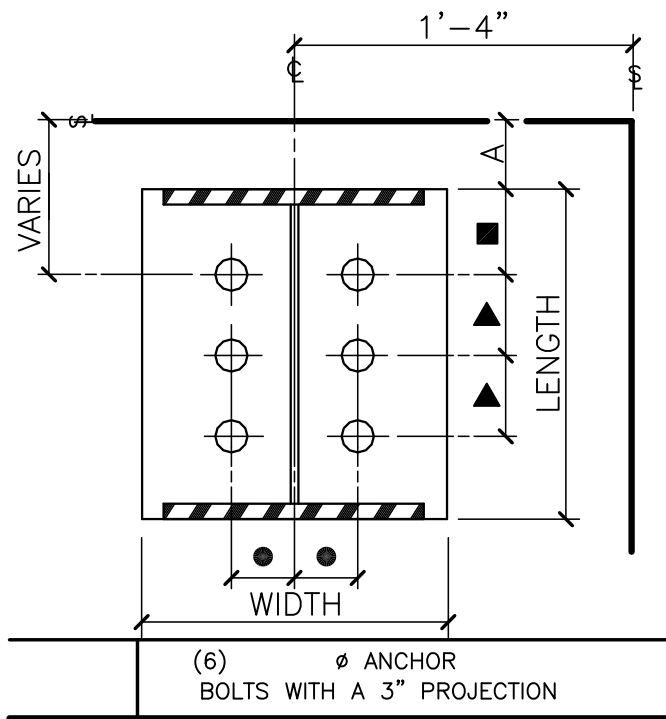
A = 0" – FLUSH  
1" – INSET  
8" – 8" BYPASS GIRTS  
10" – 10" BYPASS GIRTS  
12" – 12" BYPASS GIRTS



# PRODUCT & ENGINEERING MANUAL

## BU6TR PE

**NOTE:** The third digit of each detail name indicates the number of anchor bolts required. For example: BU6TR requires (6) anchor bolts. BU4TR requires (4) anchor bolts.



4"x4" BOLT PATTERN  
AT 3/4" OR 1" DIA  
ANCHOR BOLTS

5"x5" BOLT PATTERN  
AT 1-1/4" DIA  
ANCHOR BOLTS

■ = 2" OR 4" AT 3/4" OR 1" BOLTS  
= 3-1/2" AT 1-1/4" BOLTS  
● = 2" OR 2-1/2"

▲ EACH ADDITIONAL SET OF ANCHOR  
BOLTS REQUIRED (BASED ON DESIGN)  
IS SPACED AT 4" OR 5" ON CENTER.

A = 0" – FLUSH  
1" – INSET  
8" – 8" BYPASS GIRTS  
10" – 10" BYPASS GIRTS  
12" – 12" BYPASS GIRTS

LAST REVISION  
DATE: 08/28/09  
BY: DLC CHK: AES

DETAIL NAME IF APPLICABLE  
**BU6TR\_PE.DWG**

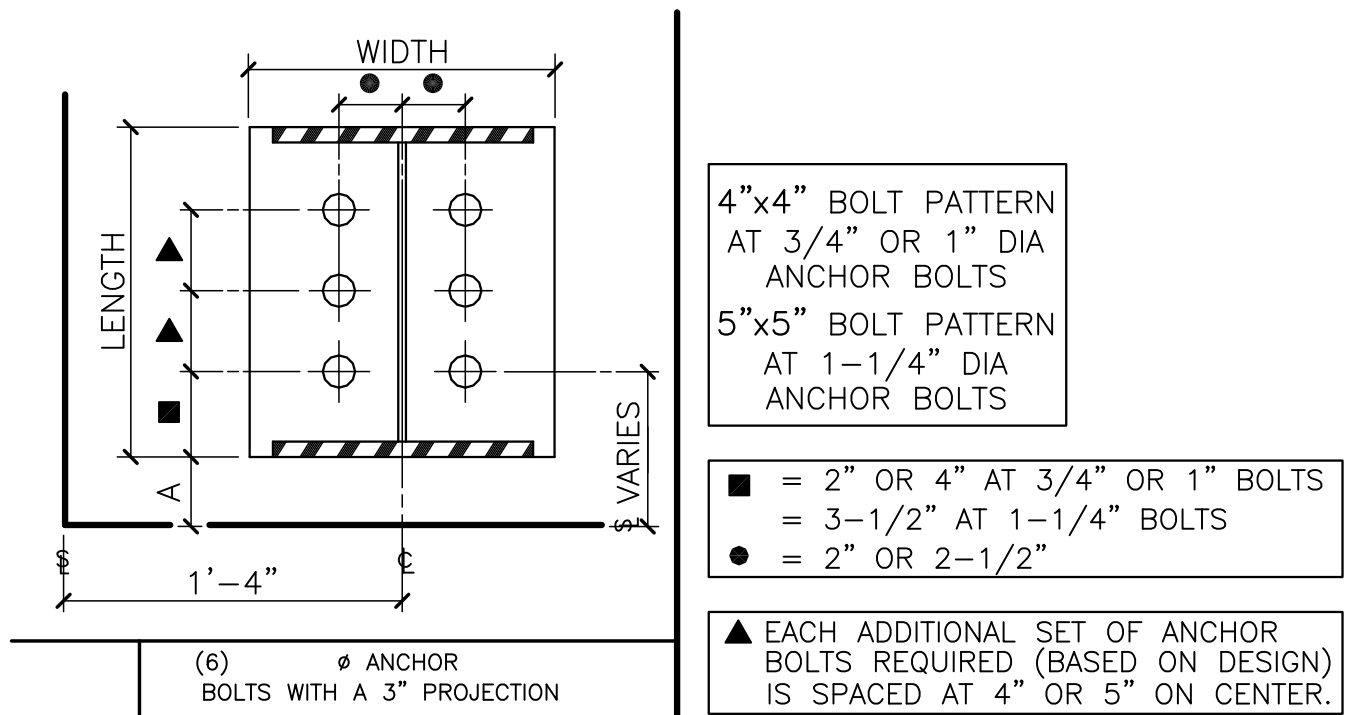
**10.0.31**



# PRODUCT & ENGINEERING MANUAL

## BU6BL PE

**NOTE:** The third digit of each detail name indicates the number of anchor bolts required. For example: BU6BL requires (6) anchor bolts. BU4BL requires (4) anchor bolts.



A =

- 0" – FLUSH
- 1" – INSET
- 8" – 8" BYPASS GIRTS
- 10" – 10" BYPASS GIRTS
- 12" – 12" BYPASS GIRTS

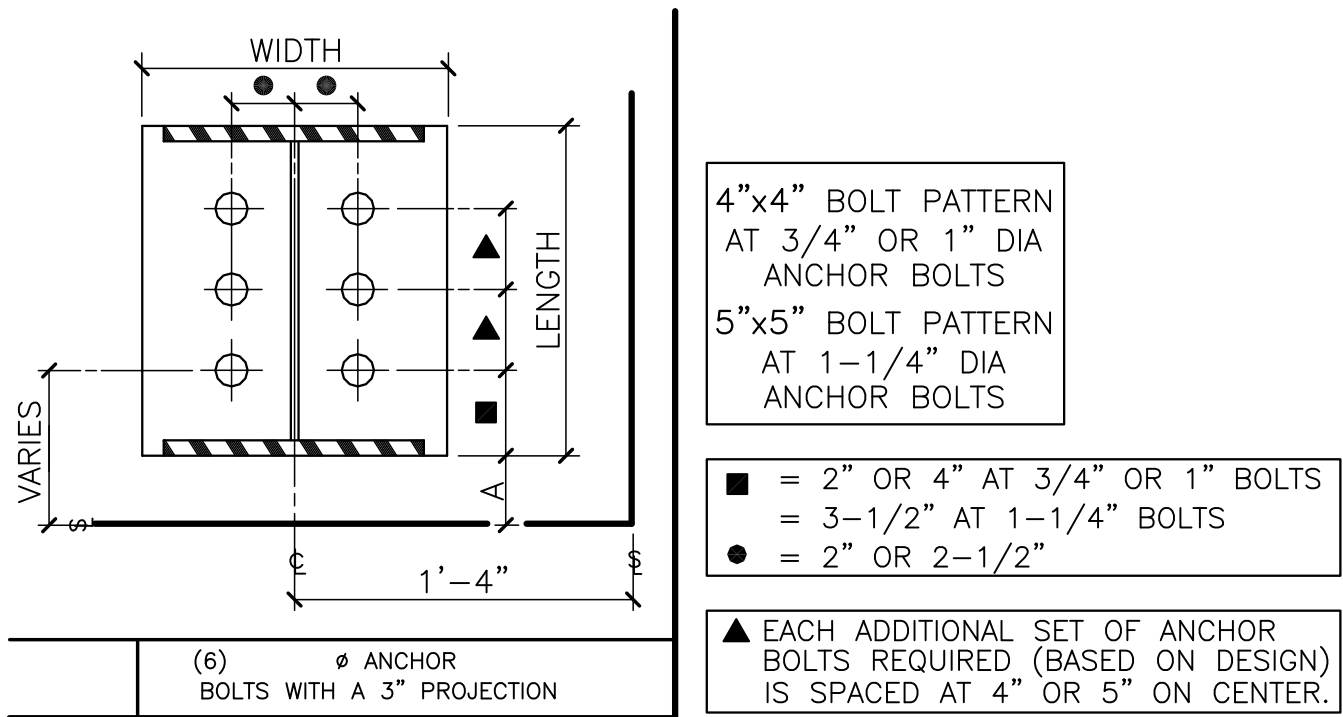




# PRODUCT & ENGINEERING MANUAL

## BU6BR PE

**NOTE:** The third digit of each detail name indicates the number of anchor bolts required. For example: BU6BR requires (6) anchor bolts. BU4BR requires (4) anchor bolts.



A = 0" – FLUSH  
1" – INSET  
8" – 8" BYPASS GIRTS  
10" – 10" BYPASS GIRTS  
12" – 12" BYPASS GIRTS

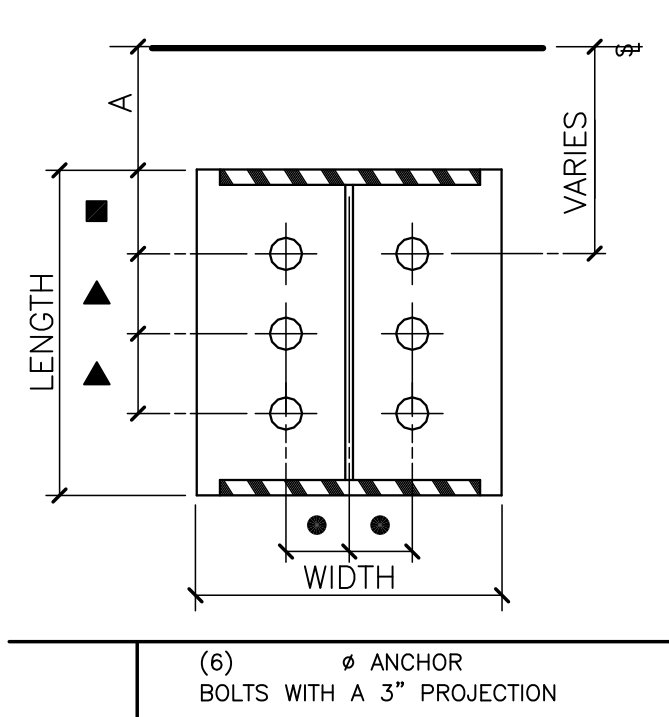


# PRODUCT & ENGINEERING MANUAL

## BUILT - UP RIGID FRAME SIDEWALL DETAILS

### BU6TX PE

**NOTE:** The third digit of each detail name indicates the number of anchor bolts required. For example: BU6TX requires (6) anchor bolts. BU4TX requires (4) anchor bolts.



4"x4" BOLT PATTERN  
AT 3/4" OR 1" DIA  
ANCHOR BOLTS  
5"x5" BOLT PATTERN  
AT 1-1/4" DIA  
ANCHOR BOLTS

■ = 2" OR 4" AT 3/4" OR 1" BOLTS  
= 3-1/2" AT 1-1/4" BOLTS  
● = 2" OR 2-1/2"

▲ EACH ADDITIONAL SET OF ANCHOR  
BOLTS REQUIRED (BASED ON DESIGN)  
IS SPACED AT 4" OR 5" ON CENTER.

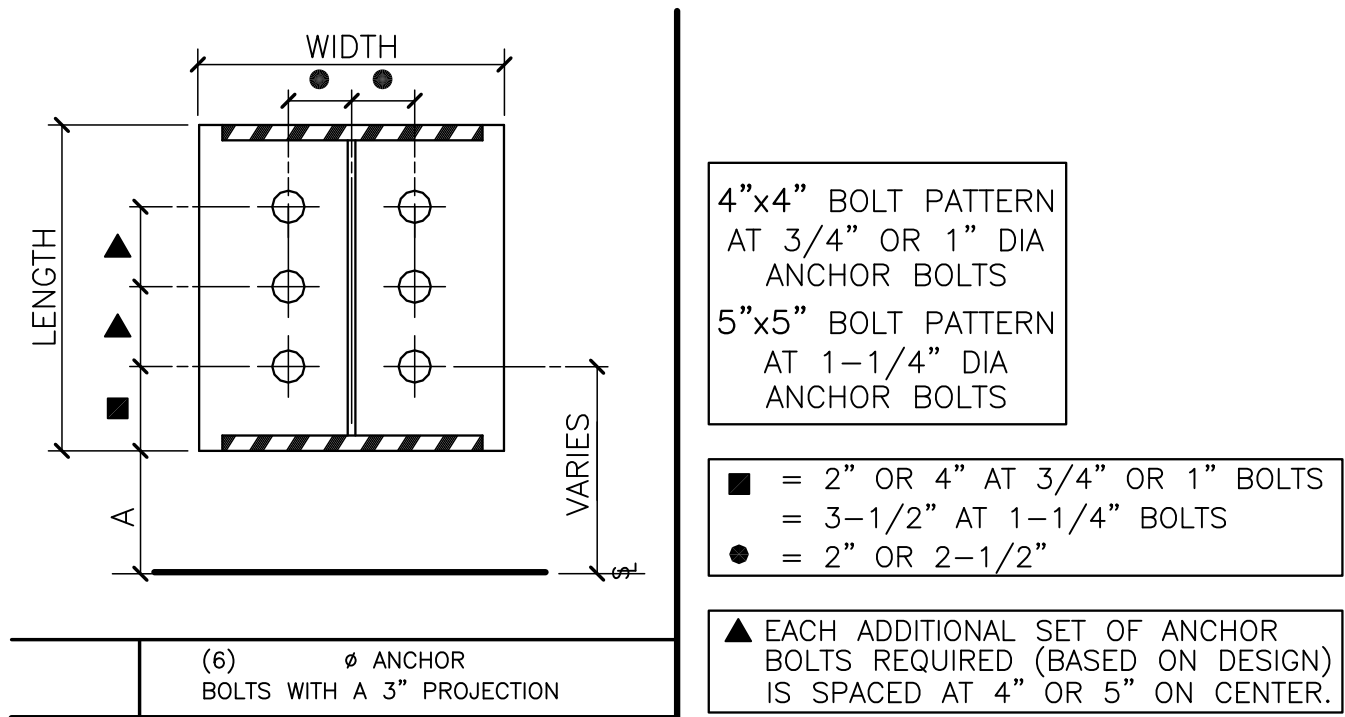
A = 0" – FLUSH  
1" – INSET  
8" – 8" BYPASS GIRTS  
10" – 10" BYPASS GIRTS  
12" – 12" BYPASS GIRTS



# PRODUCT & ENGINEERING MANUAL

## BU6BX PE

**NOTE:** The third digit of each detail name indicates the number of anchor bolts required. For example: BU6BX requires (6) anchor bolts. BU4BX requires (4) anchor bolts.



A = 0" – FLUSH  
1" – INSET  
8" – 8" BYPASS GIRTS  
10" – 10" BYPASS GIRTS  
12" – 12" BYPASS GIRTS

LAST REVISION  
DATE: 08/28/09  
BY: DLC CHK: AES

DETAIL NAME IF APPLICABLE  
**BU6BX\_PE.DWG**

**10.0.35**

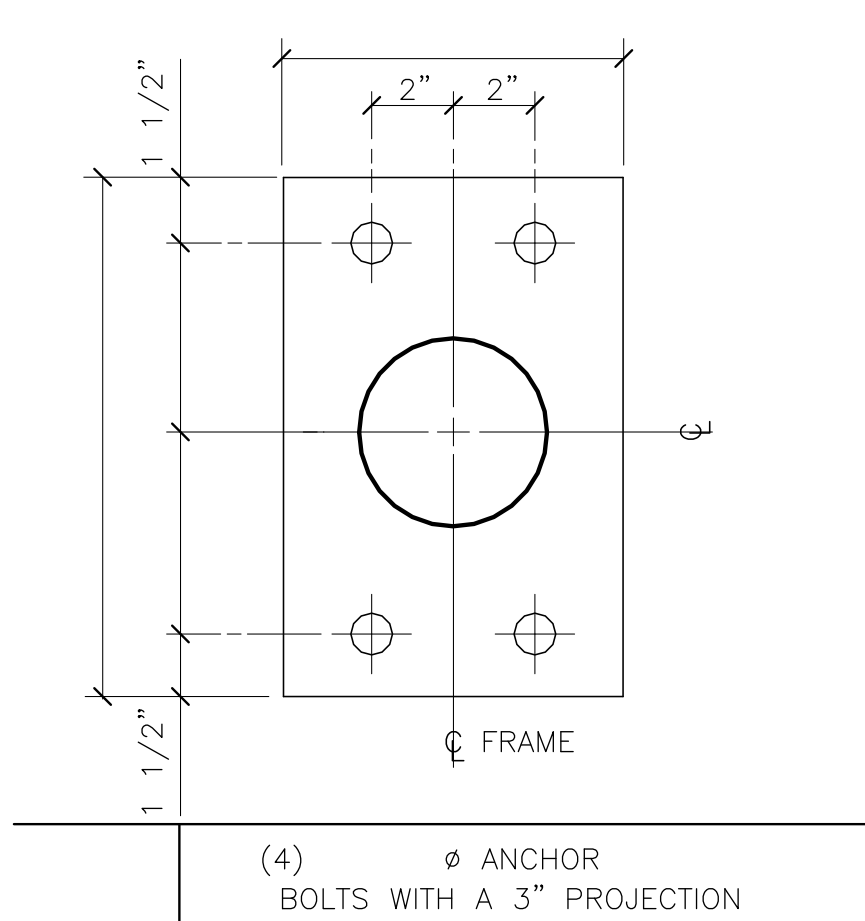


# PRODUCT & ENGINEERING MANUAL

## PIPE & TUBE INTERIOR COLUMNS

### RC4IN PE

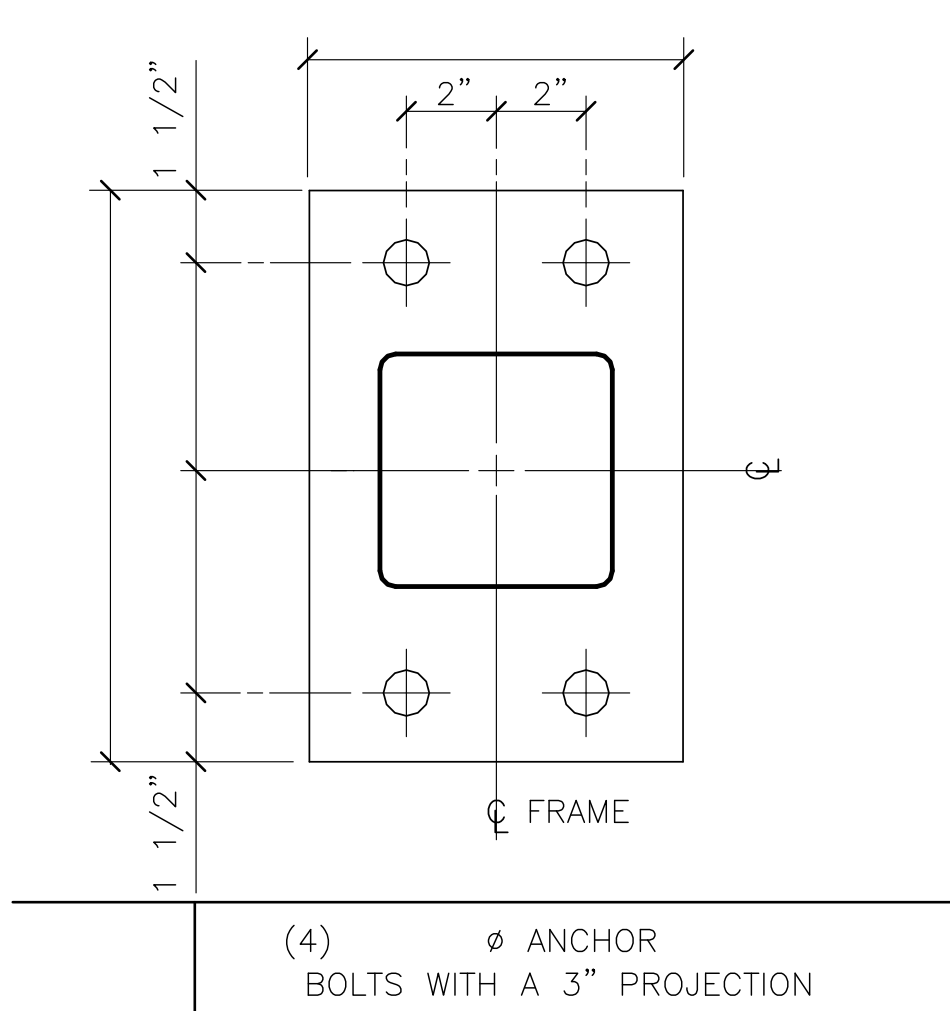
**NOTE:** Pipe columns are the standard. If different shape is required, please specify in **Box 28** of the order documents.





# PRODUCT & ENGINEERING MANUAL

## SC4IN PE

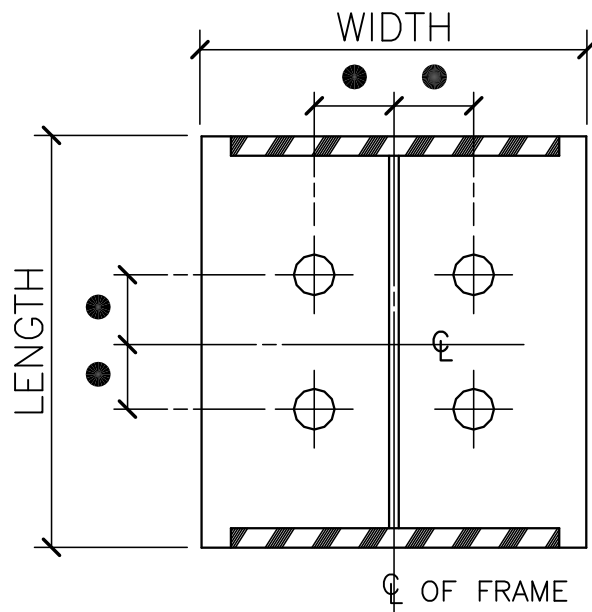




# PRODUCT & ENGINEERING MANUAL

## BUILT - UP INTERIOR COLUMNS

### BU4IN PE



4"x4" BOLT PATTERN  
AT 3/4" OR 1" DIA  
ANCHOR BOLTS  
5"x5" BOLT PATTERN  
AT 1-1/4" DIA  
ANCHOR BOLTS

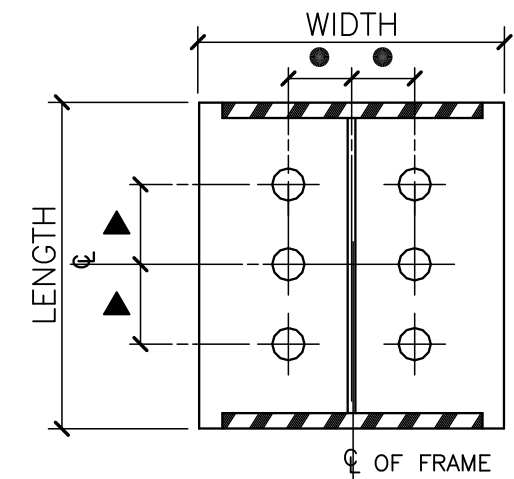
● = 2" OR 2-1/2"

(4)      ∅ ANCHOR  
BOLTS WITH A 3" PROJECTION



# PRODUCT & ENGINEERING MANUAL

## BU6IN PE



(6)  $\emptyset$  ANCHOR  
BOLTS WITH A 3" PROJECTION

4"x4" BOLT PATTERN  
AT 3/4" OR 1" DIA  
ANCHOR BOLTS  
5"x5" BOLT PATTERN  
AT 1-1/4" DIA  
ANCHOR BOLTS

● = 2" OR 2-1/2"

▲ EACH ADDITIONAL SET OF ANCHOR  
BOLTS REQUIRED (BASED ON DESIGN)  
IS SPACED AT 4" OR 5" ON CENTER.



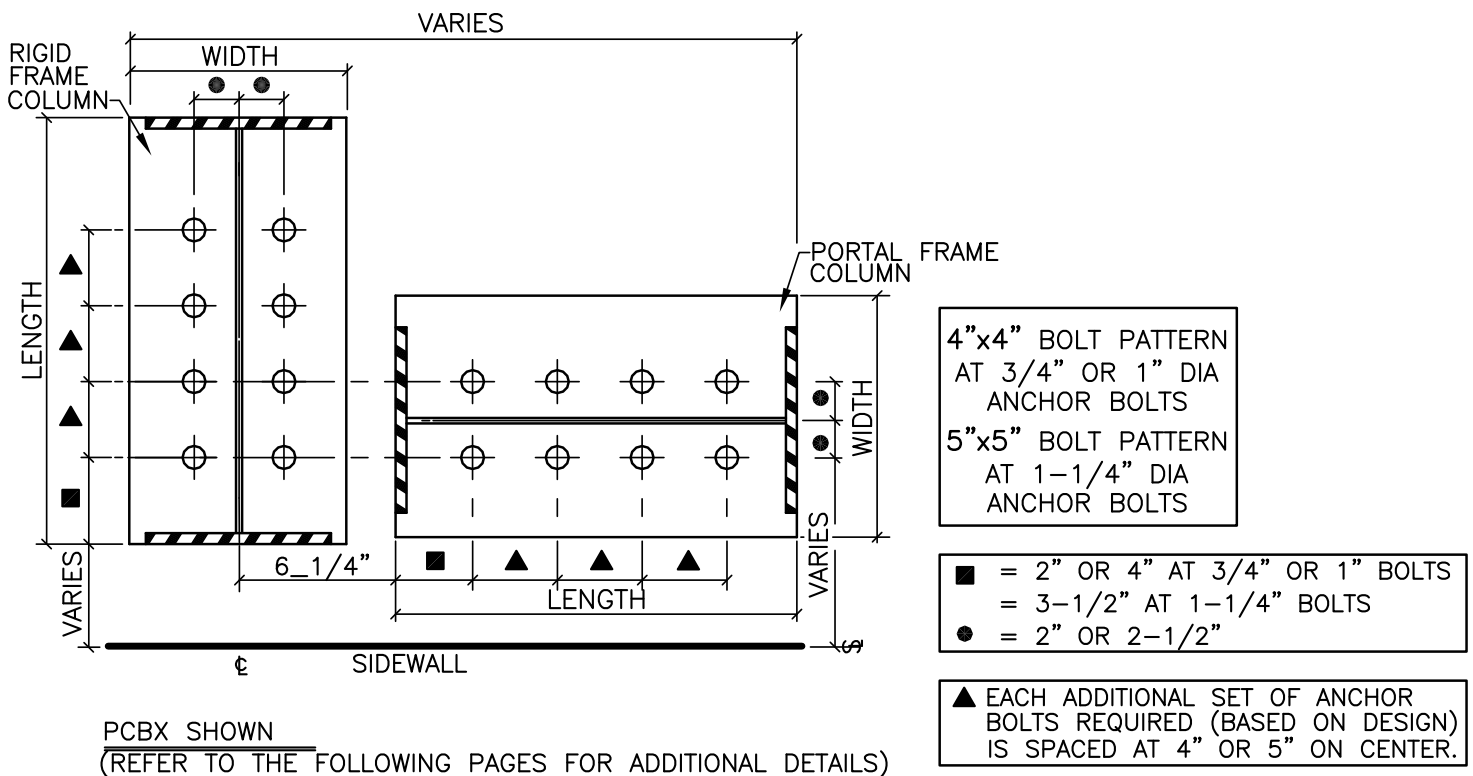
# PRODUCT & ENGINEERING MANUAL

## AB0180PE – SIDEWALL PORTAL FRAMES – GENERAL INFORMATION

The detail below shows standard dimensions & anchor bolt placement for Portal Frame Columns. The detail shows anchor bolt locations for columns with 4, 6, & 8 anchor bolt requirements.

Typically portal columns will not have more than 4 anchor bolts required and the anchor bolts will be 1" diameter. However, variations occur – please check the design information carefully.

(Note that the rigid frame column and the portal frame column may not have the same bolt quantity or diameter.)



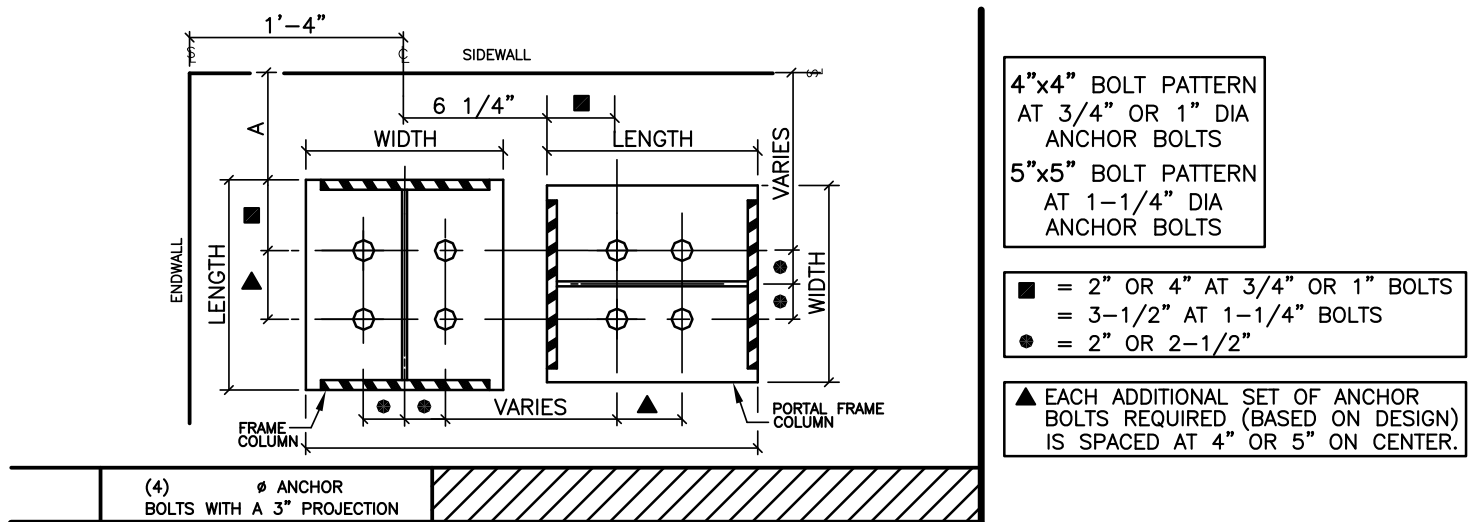




# PRODUCT & ENGINEERING MANUAL

## SIDEWALL PORTAL FRAME CORNER COLUMNS

### PC6TL PE

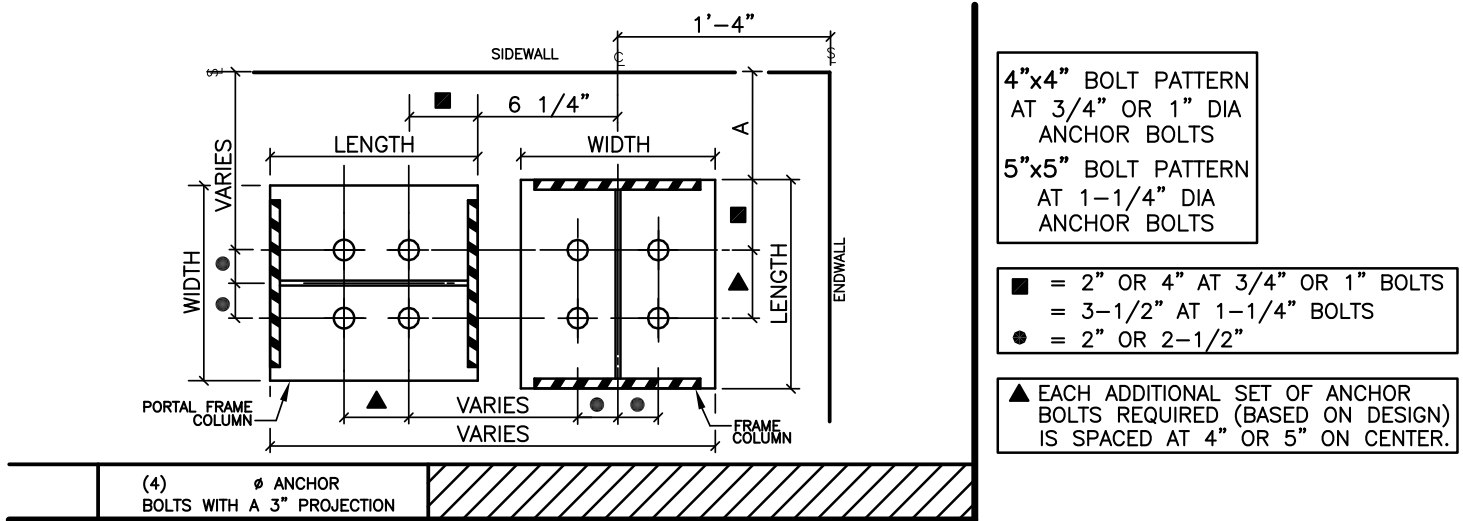


A =  
 0" – FLUSH  
 1" – INSET  
 8" – 8" BYPASS GIRTS  
 10" – 10" BYPASS GIRTS  
 12" – 12" BYPASS GIRTS



# PRODUCT & ENGINEERING MANUAL

## PC6TR PE



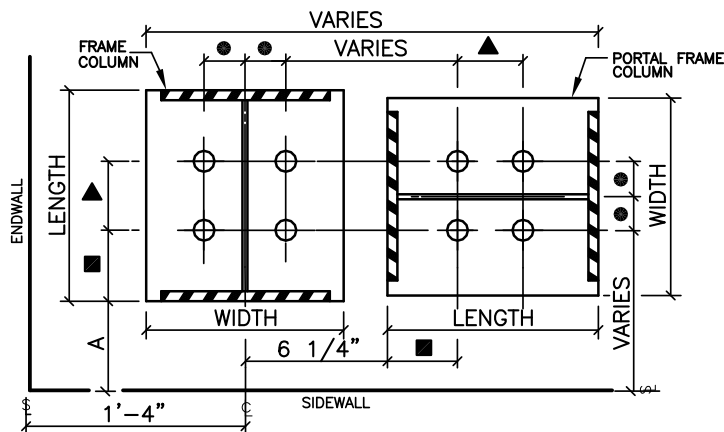
A =

- 0" – FLUSH
- 1" – INSET
- 8" – 8" BYPASS GIRTS
- 10" – 10" BYPASS GIRTS
- 12" – 12" BYPASS GIRTS



# PRODUCT & ENGINEERING MANUAL

## PC6BL PE



4"x4" BOLT PATTERN  
AT 3/4" OR 1" DIA  
ANCHOR BOLTS  
5"x5" BOLT PATTERN  
AT 1-1/4" DIA  
ANCHOR BOLTS

■ = 2" OR 4" AT 3/4" OR 1" BOLTS  
= 3-1/2" AT 1-1/4" BOLTS  
● = 2" OR 2-1/2"

▲ EACH ADDITIONAL SET OF ANCHOR  
BOLTS REQUIRED (BASED ON DESIGN)  
IS SPACED AT 4" OR 5" ON CENTER.

(4) Ø ANCHOR  
BOLTS WITH A 3" PROJECTION

A = 0" – FLUSH  
1" – INSET  
8" – 8" BYPASS GIRTS  
10" – 10" BYPASS GIRTS  
12" – 12" BYPASS GIRTS

LAST REVISION  
DATE: 08/28/09  
BY: DLC CHK: AES

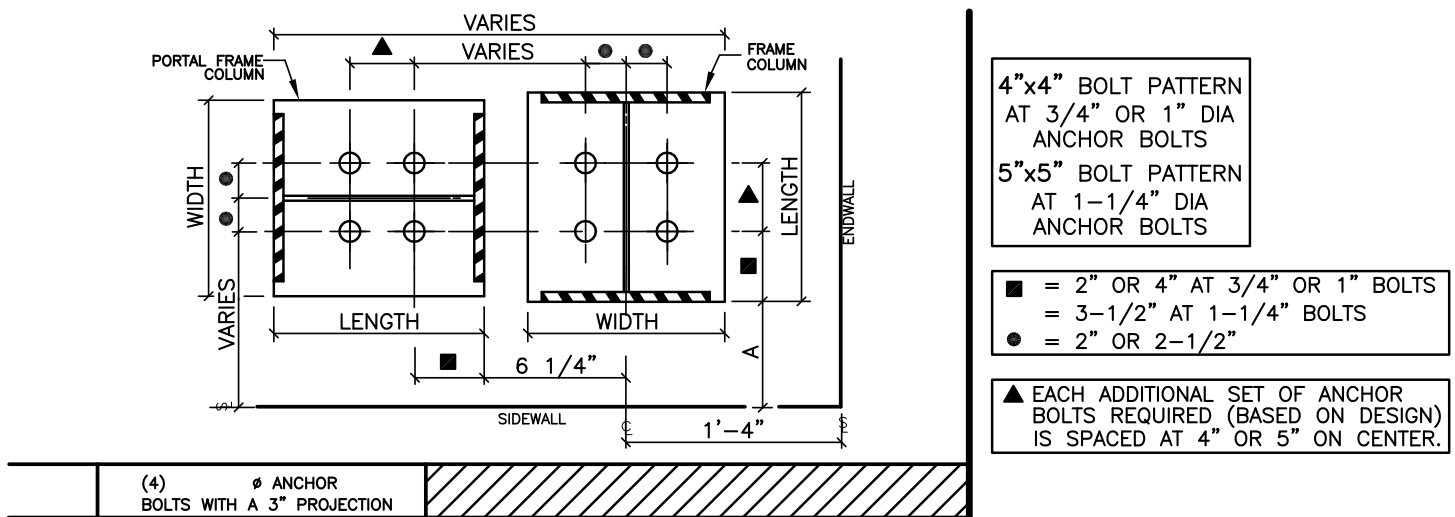
DETAIL NAME IF APPLICABLE  
PC6BL\_PE.DWG

10.0.43



# PRODUCT & ENGINEERING MANUAL

## PC6BR PE



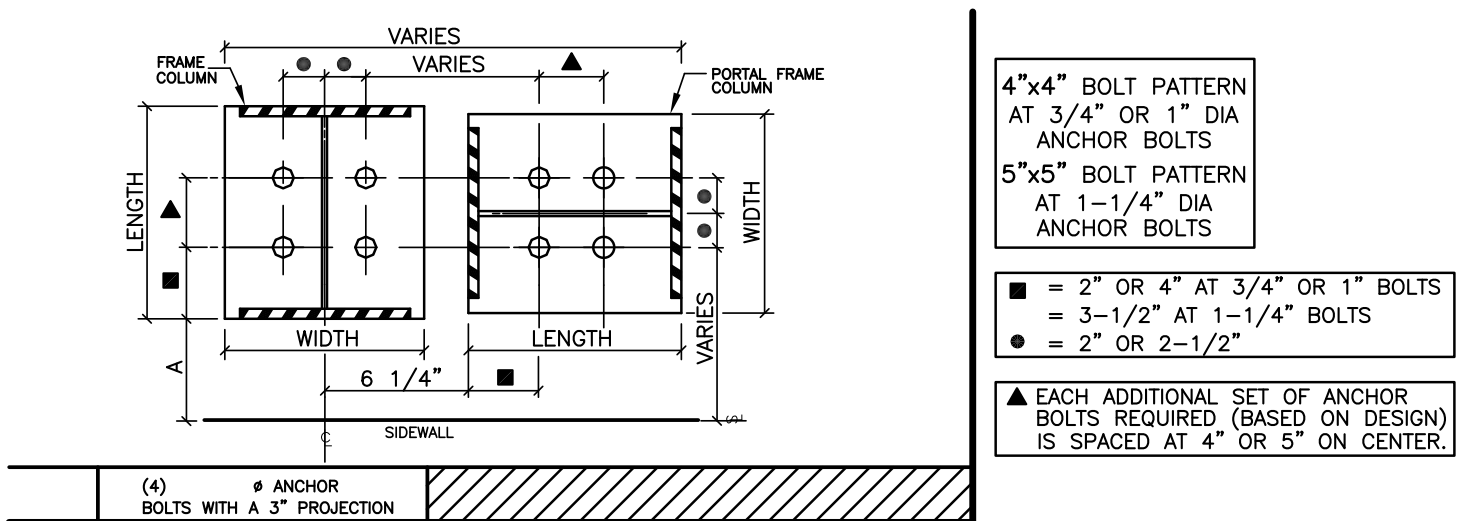
A =

- 0" – FLUSH
- 1" – INSET
- 8" – 8" BYPASS GIRTS
- 10" – 10" BYPASS GIRTS
- 12" – 12" BYPASS GIRTS



# PRODUCT & ENGINEERING MANUAL

## PC6BLXPE

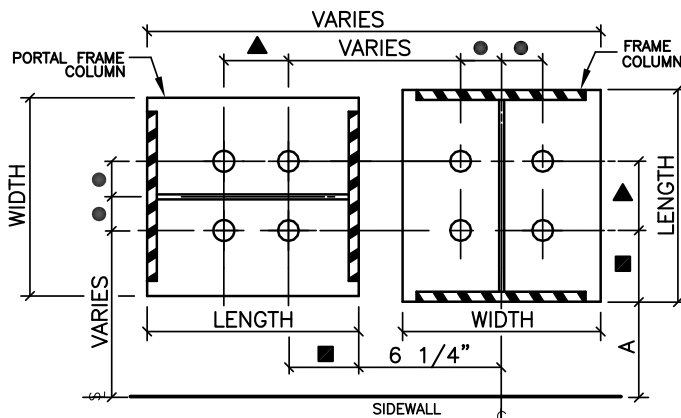


A = 0" – FLUSH  
1" – INSET  
8" – 8" BYPASS GIRTS  
10" – 10" BYPASS GIRTS  
12" – 12" BYPASS GIRTS



# PRODUCT & ENGINEERING MANUAL

## PC6BRXPE



4"x4" BOLT PATTERN  
AT 3/4" OR 1" DIA  
ANCHOR BOLTS  
5"x5" BOLT PATTERN  
AT 1-1/4" DIA  
ANCHOR BOLTS

■ = 2" OR 4" AT 3/4" OR 1" BOLTS  
= 3-1/2" AT 1-1/4" BOLTS  
● = 2" OR 2-1/2"

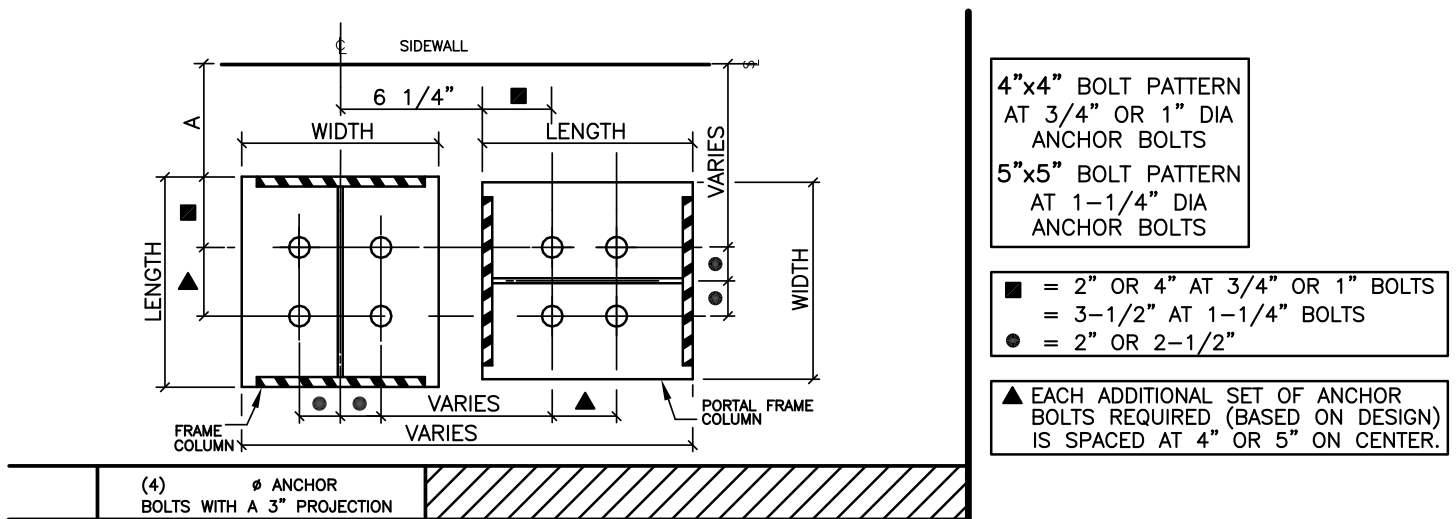
▲ EACH ADDITIONAL SET OF ANCHOR  
BOLTS REQUIRED (BASED ON DESIGN)  
IS SPACED AT 4" OR 5" ON CENTER.

A = 0" – FLUSH  
1" – INSET  
8" – 8" BYPASS GIRTS  
10" – 10" BYPASS GIRTS  
12" – 12" BYPASS GIRTS



# PRODUCT & ENGINEERING MANUAL

## PC6TLXPE

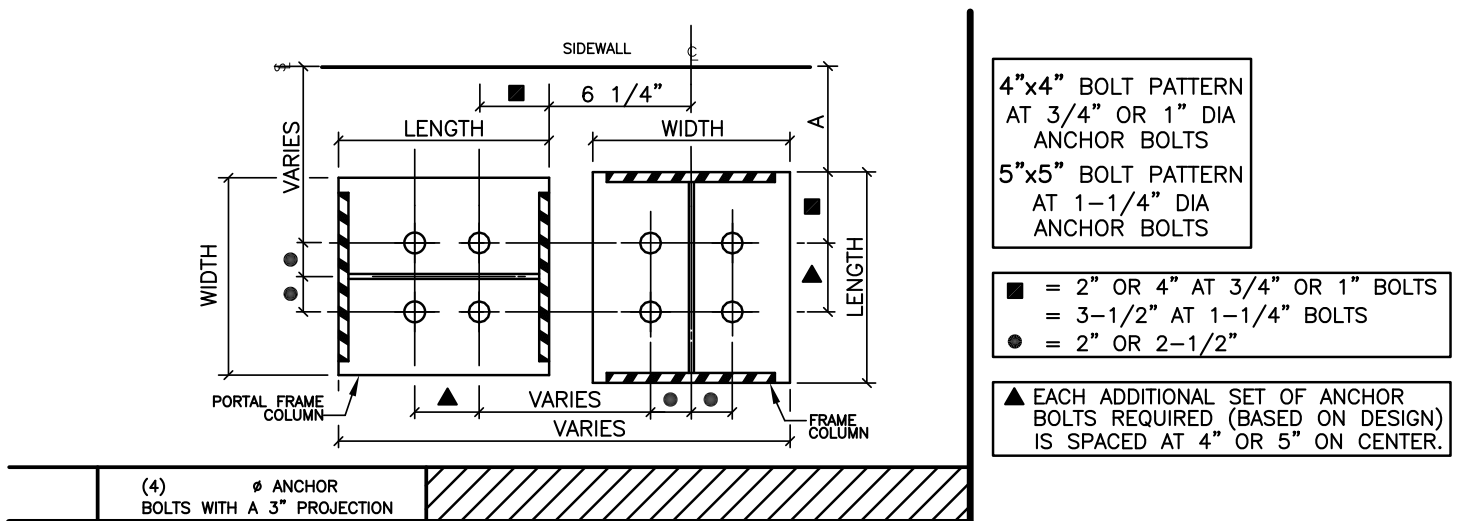


A =  
 0" – FLUSH  
 1" – INSET  
 8" – 8" BYPASS GIRTS  
 10" – 10" BYPASS GIRTS  
 12" – 12" BYPASS GIRTS



# PRODUCT & ENGINEERING MANUAL

## PC6TRXPE



A =

- 0" – FLUSH
- 1" – INSET
- 8" – 8" BYPASS GIRTS
- 10" – 10" BYPASS GIRTS
- 12" – 12" BYPASS GIRTS



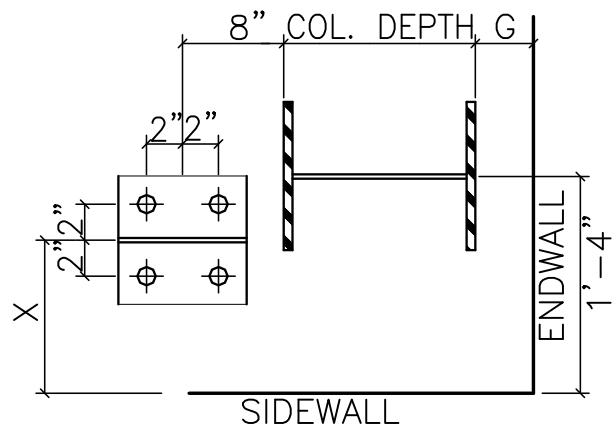
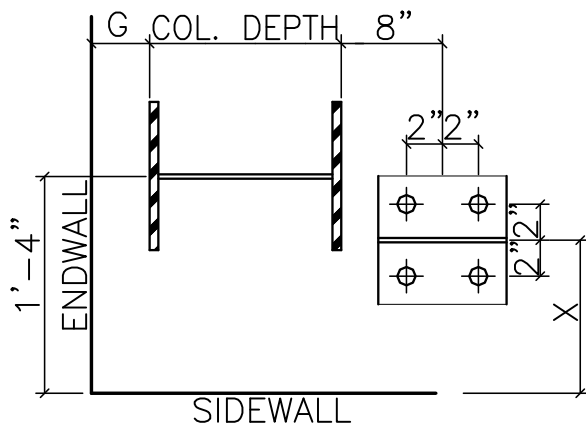
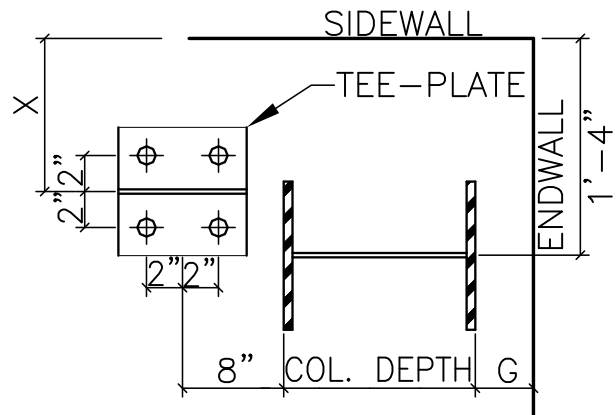
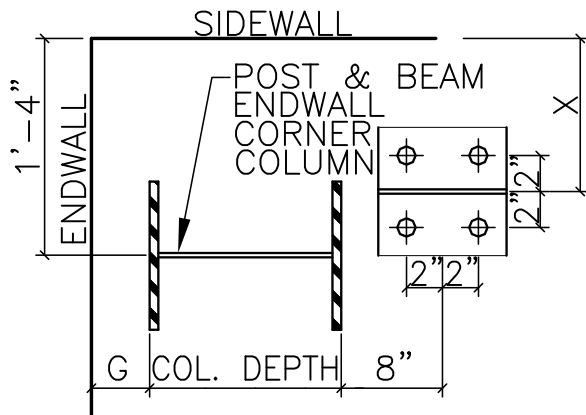


# PRODUCT & ENGINEERING MANUAL

## AB0190PE – CORNER BRACING TEE PLATE DETAILS

### NOTE:

BRACING TEE PLATES ARE USED WHEN A COLUMN IS ROTATED SUCH THAT ROD OR CABLE BRACING CANNOT PASS THROUGH THE COLUMN'S WEB.



X =	SIDEWALL GIRT OFFSET + 6"
-	1" INSET + 6" = 7"
-	8" BYPASS + 6" = 1'-2"
-	10" BYPASS + 6" = 1'-4"

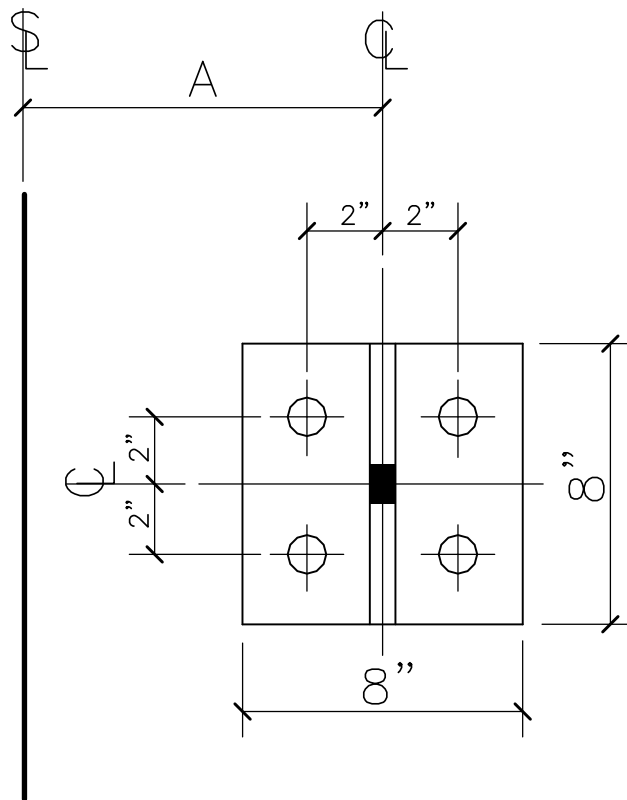
NOTE: WHEN THE SIDEWALL END BAY IS BRACED AND THE ADJACENT ENDWALL IS A POST & BEAM FRAME, THE STANDARD IS TO USE BRACING TEE PLATE AS SHOWN ABOVE.



# PRODUCT & ENGINEERING MANUAL

## BRACING TEE PLATES (AT INTERIOR BAYS)

### BT4LX PE



	(4) $\emptyset$ ANCHOR BOLTS WITH A 3" PROJECTION
--	--

A = GIRT OFFSET PLUS 4"

LAST REVISION  
DATE: 08/14/08  
BY: RJF CHK: AAJ

DETAIL NAME IF APPLICABLE  
**BT4LX\_PE.DWG**

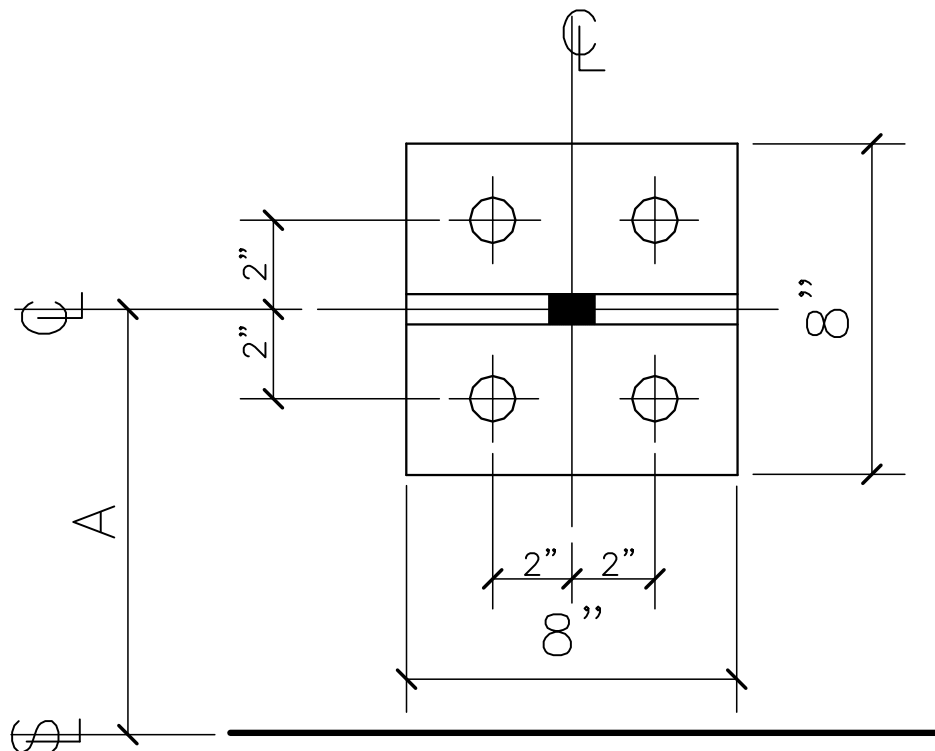
**10.0.50**





# PRODUCT & ENGINEERING MANUAL

## BT4BX PE



(4) $\varnothing$ ANCHOR BOLTS WITH A 3" PROJECTION
--

A = GIRT OFFSET PLUS 4"

LAST REVISION  
DATE: 08/14/08  
BY: RJF CHK: AAJ

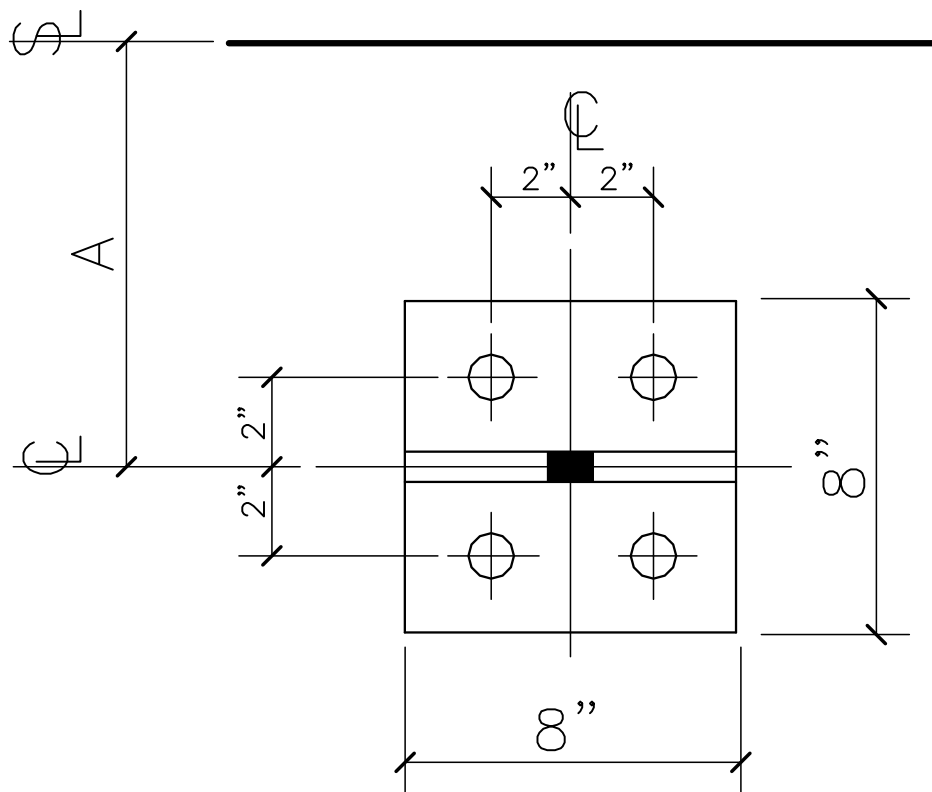
DETAIL NAME IF APPLICABLE  
**BT4BX\_PE.DWG**

**10.0.52**



# PRODUCT & ENGINEERING MANUAL

## BT4TX PE



(4) $\varnothing$ ANCHOR BOLTS WITH A 3" PROJECTION
--

A = GIRT OFFSET PLUS 4"

LAST REVISION  
DATE: 08/14/08  
BY: RJF CHK: AAJ

DETAIL NAME IF APPLICABLE  
**BT4TX\_PE.DWG**

**10.0.53**