



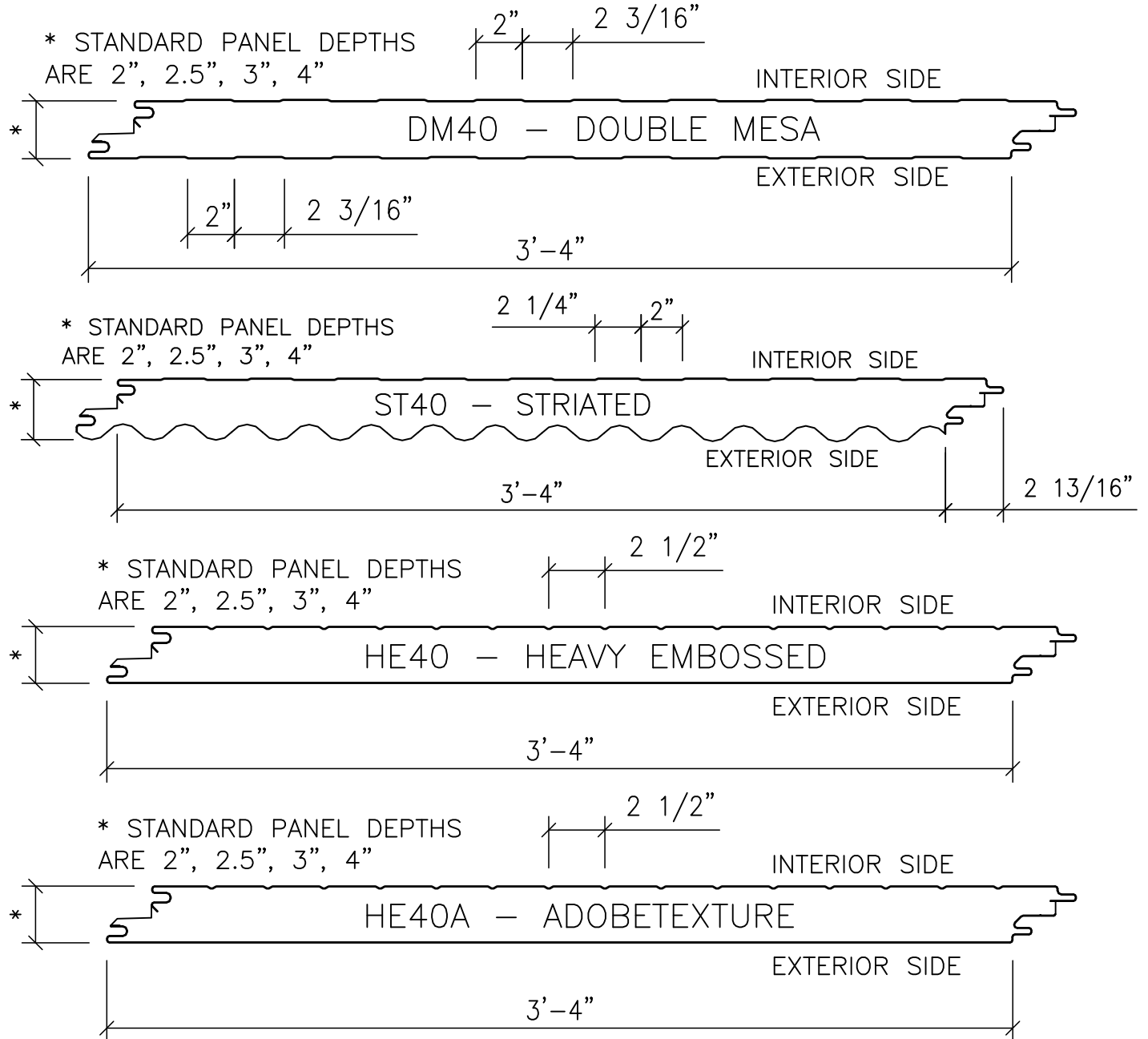
INSULATED METAL WALL PANEL SYSTEMS TABLE OF CONTENTS

Insulated Wall Panel Profiles	2
Insulated Metal Wall Panel Span Tables	4
2" Panel Thickness – Standard (2) Fasteners	4
2" Panel Thickness – Optional (3) Fasteners.....	5
2-1/2" Panel Thickness – Standard (2) Fasteners.....	6
2-1/2" Panel Thickness – Optional (3) Fasteners.....	7
3" Panel Thickness – Standard (2) Fasteners	8
3" Panel Thickness – Optional (3) Fasteners.....	9
4" Panel Thickness – Standard (2) Fasteners	10
4" Panel Thickness – Optional (3) Fasteners.....	11
Standard Details.....	12
GB2300 - Base Trim	12
GA2042 - Horizontal Joint.....	13
GC2021PE - Outside Corner Trim	14
GC2051PE - Inside Corner Trim.....	15
GD2020PE - Jamb Trim.....	16
GD2040PE - Header Trim.....	17
GD2070PE - Sill Trim.....	18



INSULATED WALL PANEL PROFILES

The below insulated metal wall panel system panels are available as components of one of Nucor Building Systems' Standard Metal Wall and Insulated Wall Systems.





PRODUCT & ENGINEERING MANUAL

Information about the available panel thickness options, R and U factors, exterior and interior colors and finishes, available panel lengths, performance and testing information, and much more is available at the Nucor Building Systems website at the below links.

[Insulated Metal Wall Panel Systems](#)

The following pages outline span capacities for typical panel configurations as well as provide Nucor standard details for these wall systems.



PRODUCT & ENGINEERING MANUAL

INSULATED METAL WALL PANEL SPAN TABLES

2" PANEL THICKNESS – STANDARD (2) FASTENERS

2" Insulated Metal Wall Panels (All Profiles)			– 26 Gauge Exterior/Interior – Standard (2) Fasteners						
Simple Span									
Span (ft.)	Panel Capacity Pressure/Suction (psf)	Deflection L/180	Wind Pressure/Suction Capacity (psf) per Support Thickness						
			0.060	0.067	0.075	0.089	0.099	0.105	0.120
5	65	n/c	65	65	65	65	65	65	65
6	49	n/c	49	49	49	49	49	49	49
7	38	n/c	38	38	38	38	38	38	38
8	30	n/c	30	30	30	30	30	30	30
9	24	n/c	24	24	24	24	24	24	24
10	19	n/c	19	19	19	19	19	19	19
11	15	n/c	15	15	15	15	15	15	15
12	13	n/c	13	13	13	13	13	13	13
Multiple (2+) Spans									
Span (ft.)	Panel Capacity Pressure/Suction (psf)	Deflection L/180	Wind Pressure/Suction Capacity (psf) per Support Thickness						
			0.060	0.067	0.075	0.089	0.099	0.105	0.120
5	70	n/c	28	32	36	47	50	50	50
6	55	n/c	23	26	30	39	42	42	42
7	44	n/c	20	22	26	33	36	36	36
8	36	n/c	17	20	22	29	31	31	31
9	30	n/c	15	17	20	26	28	28	28
10	25	n/c	14	16	18	23	25	25	25
11	21	n/c	12	14	16	21	21	21	21
12	18	n/c	11	13	15	18	18	18	18

Insulated wall panel deflections are held to L/180. Contact the engineering team for minimum panel lengths, span capacities with different exterior or interior panel thicknesses, fastener configurations, or parapet conditions.



PRODUCT & ENGINEERING MANUAL

2" PANEL THICKNESS – OPTIONAL (3) FASTENERS

2" Insulated Metal Wall Panels (All Profiles)			– 26 Gauge Exterior/Interior – Optional (3) Fasteners						
Simple Span									
Span (ft.)	Panel Capacity Pressure/Suction (psf)	Deflection L/180	Wind Pressure/Suction Capacity (psf) per Support Thickness						
			0.060	0.067	0.075	0.089	0.099	0.105	0.120
5	65	n/c	65	65	65	65	65	65	65
6	49	n/c	49	49	49	49	49	49	49
7	38	n/c	38	38	38	38	38	38	38
8	30	n/c	30	30	30	30	30	30	30
9	24	n/c	24	24	24	24	24	24	24
10	19	n/c	19	19	19	19	19	19	19
11	15	n/c	15	15	15	15	15	15	15
12	13	n/c	13	13	13	13	13	13	13
Multiple (2+) Spans									
Span (ft.)	Panel Capacity Pressure/Suction (psf)	Deflection L/180	Wind Pressure/Suction Capacity (psf) per Support Thickness						
			0.060	0.067	0.075	0.089	0.099	0.105	0.120
5	70	n/c	42	48	50	50	50	50	50
6	55	n/c	35	40	42	42	42	42	42
7	44	n/c	30	34	36	36	36	36	36
8	36	n/c	26	30	31	31	31	31	31
9	30	n/c	23	26	28	28	28	28	28
10	25	n/c	21	24	25	25	25	25	25
11	21	n/c	19	21	21	21	21	21	21
12	18	n/c	17	18	18	18	18	18	18

Insulated wall panel deflections are held to L/180. Contact the engineering team for minimum panel lengths, span capacities with different exterior or interior panel thicknesses, fastener configurations, or parapet conditions.



PRODUCT & ENGINEERING MANUAL

2-1/2" PANEL THICKNESS – STANDARD (2) FASTENERS

2-1/2" Insulated Metal Wall Panels (All Profiles)			– 26 Gauge Exterior/Interior – Standard (2) Fasteners						
Simple Span									
Span (ft.)	Panel Capacity Pressure/Suction (psf)	Deflection L/180	Wind Pressure/Suction Capacity (psf) per Support Thickness						
			0.060	0.067	0.075	0.089	0.099	0.105	0.120
5	85	n/c	70	80	85	85	85	85	85
6	65	n/c	58	65	65	65	65	65	65
7	51	n/c	50	51	51	51	51	51	51
8	41	n/c	41	41	41	41	41	41	41
9	33	n/c	33	33	33	33	33	33	33
10	27	n/c	27	27	27	27	27	27	27
11	22	n/c	22	22	22	22	22	22	22
12	18	n/c	18	18	18	18	18	18	18
Multiple (2+) Spans									
Span (ft.)	Panel Capacity Pressure/Suction (psf)	Deflection L/180	Wind Pressure/Suction Capacity (psf) per Support Thickness						
			0.060	0.067	0.075	0.089	0.099	0.105	0.120
5	90	n/c	28	32	36	47	50	50	50
6	72	n/c	23	26	30	39	42	42	42
7	58	n/c	20	22	26	33	36	36	36
8	48	n/c	17	20	22	29	31	31	31
9	40	n/c	15	17	20	26	28	28	28
10	34	n/c	14	16	18	23	25	25	25
11	29	n/c	12	14	16	21	22	22	22
12	24	n/c	11	13	15	19	21	21	21

Insulated wall panel deflections are held to L/180. Contact the engineering team for minimum panel lengths, span capacities with different exterior or interior panel thicknesses, fastener configurations, or parapet conditions.



PRODUCT & ENGINEERING MANUAL

2-1/2" PANEL THICKNESS – OPTIONAL (3) FASTENERS

2-1/2" Insulated Metal Wall Panels (All Profiles)			– 26 Gauge Exterior/Interior – Optional (3) Fasteners						
Simple Span									
Span (ft.)	Panel Capacity Pressure/Suction (psf)	Deflection L/180	Wind Pressure/Suction Capacity (psf) per Support Thickness						
			0.060	0.067	0.075	0.089	0.099	0.105	0.120
5	85	n/c	85	85	85	85	85	85	85
6	65	n/c	65	65	65	65	65	65	65
7	51	n/c	51	51	51	51	51	51	51
8	41	n/c	41	41	41	41	41	41	41
9	33	n/c	33	33	33	33	33	33	33
10	27	n/c	27	27	27	27	27	27	27
11	22	n/c	22	22	22	22	22	22	22
12	18	n/c	18	18	18	18	18	18	18
Multiple (2+) Spans									
Span (ft.)	Panel Capacity Pressure/Suction (psf)	Deflection L/180	Wind Pressure/Suction Capacity (psf) per Support Thickness						
			0.060	0.067	0.075	0.089	0.099	0.105	0.120
5	90	n/c	42	48	50	50	50	50	50
6	72	n/c	35	40	42	42	42	42	42
7	58	n/c	30	34	36	36	36	36	36
8	48	n/c	26	30	31	31	31	31	31
9	40	n/c	23	26	28	28	28	28	28
10	34	n/c	21	24	25	25	25	25	25
11	29	n/c	19	21	22	22	22	22	22
12	24	n/c	17	20	21	21	21	21	21

Insulated wall panel deflections are held to L/180. Contact the engineering team for minimum panel lengths, span capacities with different exterior or interior panel thicknesses, fastener configurations, or parapet conditions.



PRODUCT & ENGINEERING MANUAL

3" PANEL THICKNESS – STANDARD (2) FASTENERS

3" Insulated Metal Wall Panels (All Profiles)			– 26 Gauge Exterior/Interior – Standard (2) Fasteners						
Simple Span									
Span (ft.)	Panel Capacity Pressure/Suction (psf)	Deflection L/180	Wind Pressure/Suction Capacity (psf) per Support Thickness						
			0.060	0.067	0.075	0.089	0.099	0.105	0.120
5	106	n/c	70	80	91	106	106	106	106
6	82	n/c	58	66	76	82	82	82	82
7	65	n/c	50	57	65	65	65	65	65
8	53	n/c	44	50	53	53	53	53	53
9	43	n/c	39	43	43	43	43	43	43
10	35	n/c	35	35	35	35	35	35	35
11	29	n/c	29	29	29	29	29	29	29
12	25	n/c	25	25	25	25	25	25	25
Multiple (2+) Spans									
Span (ft.)	Panel Capacity Pressure/Suction (psf)	Deflection L/180	Wind Pressure/Suction Capacity (psf) per Support Thickness						
			0.060	0.067	0.075	0.089	0.099	0.105	0.120
5	111	n/c	28	32	36	47	50	50	50
6	89	n/c	23	26	30	39	42	42	42
7	72	n/c	20	22	26	33	36	36	36
8	60	n/c	17	20	22	29	31	31	31
9	51	n/c	15	17	20	26	28	28	28
10	43	n/c	14	16	18	23	25	25	25
11	37	n/c	12	14	16	21	22	22	22
12	32	n/c	11	13	15	19	21	21	21

Insulated wall panel deflections are held to L/180. Contact the engineering team for minimum panel lengths, span capacities with different exterior or interior panel thicknesses, fastener configurations, or parapet conditions.



PRODUCT & ENGINEERING MANUAL

3" PANEL THICKNESS – OPTIONAL (3) FASTENERS

3" Insulated Metal Wall Panels (All Profiles)			– 26 Gauge Exterior/Interior – Optional (3) Fasteners							
Simple Span										
Span (ft.)	Panel Capacity Pressure/Suction (psf)	Deflection L/180	Wind Pressure/Suction Capacity (psf) per Support Thickness							
			0.060	0.067	0.075	0.089	0.099	0.105	0.120	
5	106	n/c	105	106	106	106	106	106	106	106
6	82	n/c	82	82	82	82	82	82	82	82
7	65	n/c	65	65	65	65	65	65	65	65
8	53	n/c	53	53	53	53	53	53	53	53
9	43	n/c	43	43	43	43	43	43	43	43
10	35	n/c	35	35	35	35	35	35	35	35
11	29	n/c	29	29	29	29	29	29	29	29
12	25	n/c	25	25	25	25	25	25	25	25
Multiple (2+) Spans										
Span (ft.)	Panel Capacity Pressure/Suction (psf)	Deflection L/180	Wind Pressure/Suction Capacity (psf) per Support Thickness							
			0.060	0.067	0.075	0.089	0.099	0.105	0.120	
5	111	n/c	42	48	50	50	50	50	50	50
6	89	n/c	35	40	42	42	42	42	42	42
7	72	n/c	30	34	36	36	36	36	36	36
8	60	n/c	26	30	31	31	31	31	31	31
9	51	n/c	23	26	28	28	28	28	28	28
10	43	n/c	21	24	25	25	25	25	25	25
11	37	n/c	19	21	22	22	22	22	22	22
12	32	n/c	17	20	21	21	21	21	21	21

Insulated wall panel deflections are held to L/180. Contact the engineering team for minimum panel lengths, span capacities with different exterior or interior panel thicknesses, fastener configurations, or parapet conditions.



PRODUCT & ENGINEERING MANUAL

4" PANEL THICKNESS – STANDARD (2) FASTENERS

4" Insulated Metal Wall Panels (All Profiles)			– 26 Gauge Exterior/Interior – Standard (2) Fasteners						
Simple Span									
Span (ft.)	Panel Capacity Pressure/Suction (psf)	Deflection L/180	Wind Pressure/Suction Capacity (psf) per Support Thickness						
			0.060	0.067	0.075	0.089	0.099	0.105	0.120
5	147	n/c	70	80	91	118	126	126	126
6	116	n/c	58	66	76	99	105	105	105
7	94	n/c	50	57	65	84	90	90	90
8	77	n/c	44	50	57	74	77	77	77
9	64	n/c	39	44	50	64	64	64	64
10	53	n/c	35	40	45	53	53	53	53
11	45	n/c	32	36	41	45	45	45	45
12	38	n/c	29	33	38	38	38	38	38
Multiple (2+) Spans									
Span (ft.)	Panel Capacity Pressure/Suction (psf)	Deflection L/180	Wind Pressure/Suction Capacity (psf) per Support Thickness						
			0.060	0.067	0.075	0.089	0.099	0.105	0.120
5	153	n/c	28	32	36	47	50	50	50
6	123	n/c	23	26	30	39	42	42	42
7	101	n/c	20	22	26	33	36	36	36
8	85	n/c	17	20	22	29	31	31	31
9	72	n/c	15	17	20	26	28	28	28
10	62	n/c	14	16	18	23	25	25	25
11	54	n/c	12	14	16	21	22	22	22
12	47	n/c	11	13	15	19	21	21	21

Insulated wall panel deflections are held to L/180. Contact the engineering team for minimum panel lengths, span capacities with different exterior or interior panel thicknesses, fastener configurations, or parapet conditions.



PRODUCT & ENGINEERING MANUAL

4" PANEL THICKNESS – OPTIONAL (3) FASTENERS

4" Insulated Metal Wall Panels (All Profiles)			– 26 Gauge Exterior/Interior – Optional (3) Fasteners						
Simple Span									
Span (ft.)	Panel Capacity Pressure/Suction (psf)	Deflection L/180	Wind Pressure/Suction Capacity (psf) per Support Thickness						
			0.060	0.067	0.075	0.089	0.099	0.105	0.120
5	147	n/c	105	120	126	126	126	126	126
6	116	n/c	88	100	105	105	105	105	105
7	94	n/c	75	86	90	90	90	90	90
8	77	n/c	66	75	77	77	77	77	77
9	64	n/c	58	64	64	64	64	64	64
10	53	n/c	52	53	53	53	53	53	53
11	45	n/c	45	45	45	45	45	45	45
12	38	n/c	38	38	38	38	38	38	38
Multiple (2+) Spans									
Span (ft.)	Panel Capacity Pressure/Suction (psf)	Deflection L/180	Wind Pressure/Suction Capacity (psf) per Support Thickness						
			0.060	0.067	0.075	0.089	0.099	0.105	0.120
5	153	n/c	42	48	50	50	50	50	50
6	123	n/c	35	40	42	42	42	42	42
7	101	n/c	30	34	36	36	36	36	36
8	85	n/c	26	30	31	31	31	31	31
9	72	n/c	23	26	28	28	28	28	28
10	62	n/c	21	24	25	25	25	25	25
11	54	n/c	19	21	22	22	22	22	22
12	47	n/c	17	20	21	21	21	21	21

Insulated wall panel deflections are held to L/180. Contact the engineering team for minimum panel lengths, span capacities with different exterior or interior panel thicknesses, fastener configurations, or parapet conditions.

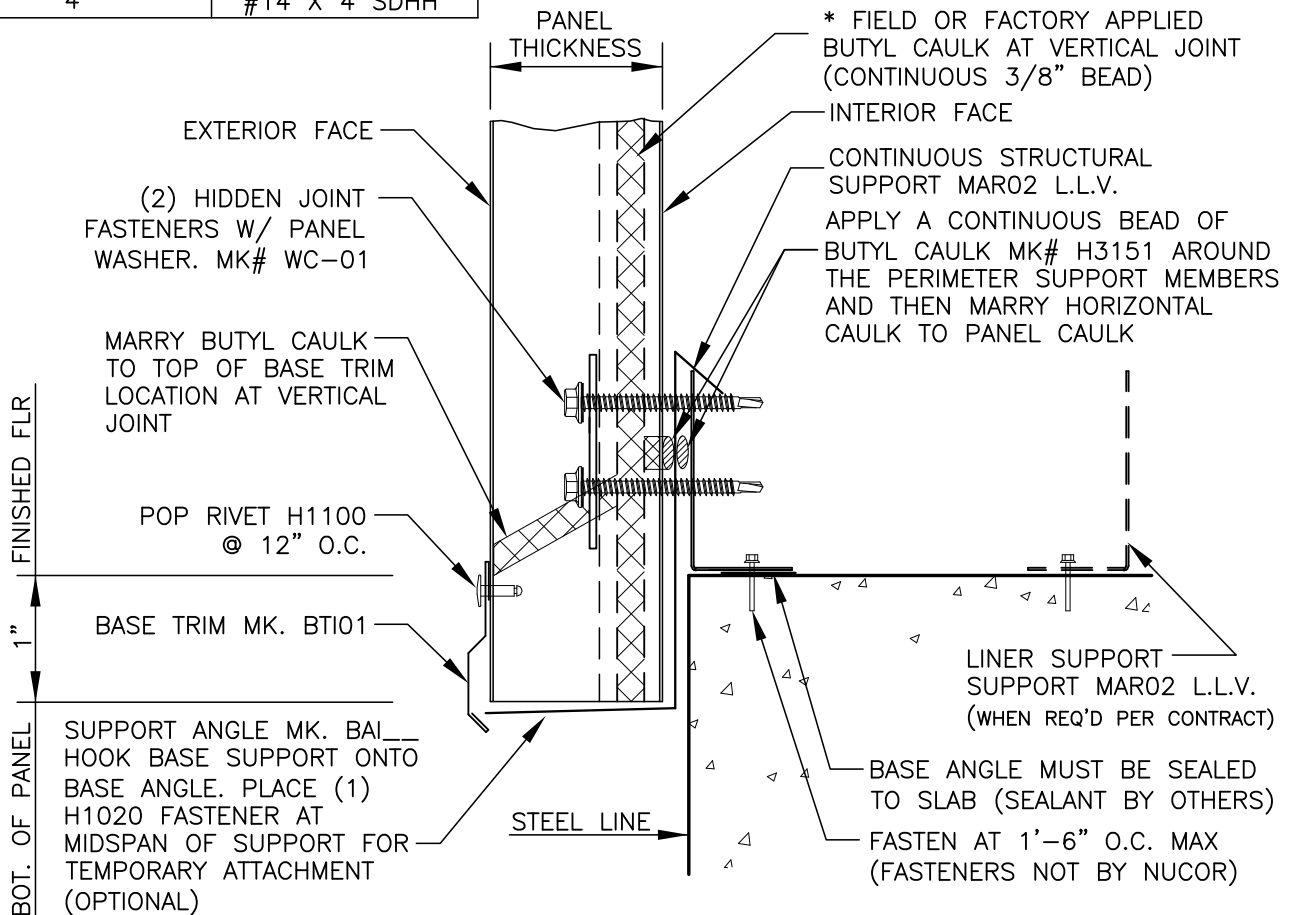


STANDARD DETAILS

GB2300 - BASE TRIM

PANEL THICKNESS	HIDDEN FASTENER
2"	#14 X 2 SDHH
2 1/2"	#14 X 3 SDHH
3"	#14 X 3 SDHH
4"	#14 X 4 SDHH

* ENSURE CAULK IS CONTINUOUS, IF NO CAULK IS PRESENT OR IF CAULK IS NOT CONTINUOUS, FIELD APPLY CONTINUOUS CAULK MK# H3151



BASE TRIM DETAIL

BASE TRIM WITH PANEL SUPPORT
SEE INSULATED WALL PANEL SHEETING ERECTION NOTES
FOR PANEL FASTENER LOCATIONS.

GB2300

- Base channel and structural cees can be substituted for the base angle.

LAST REVISION
DATE: 02/16/15
BY: AK CHK: EGB

DETAIL NAME IF APPLICABLE
GB2300.dwg

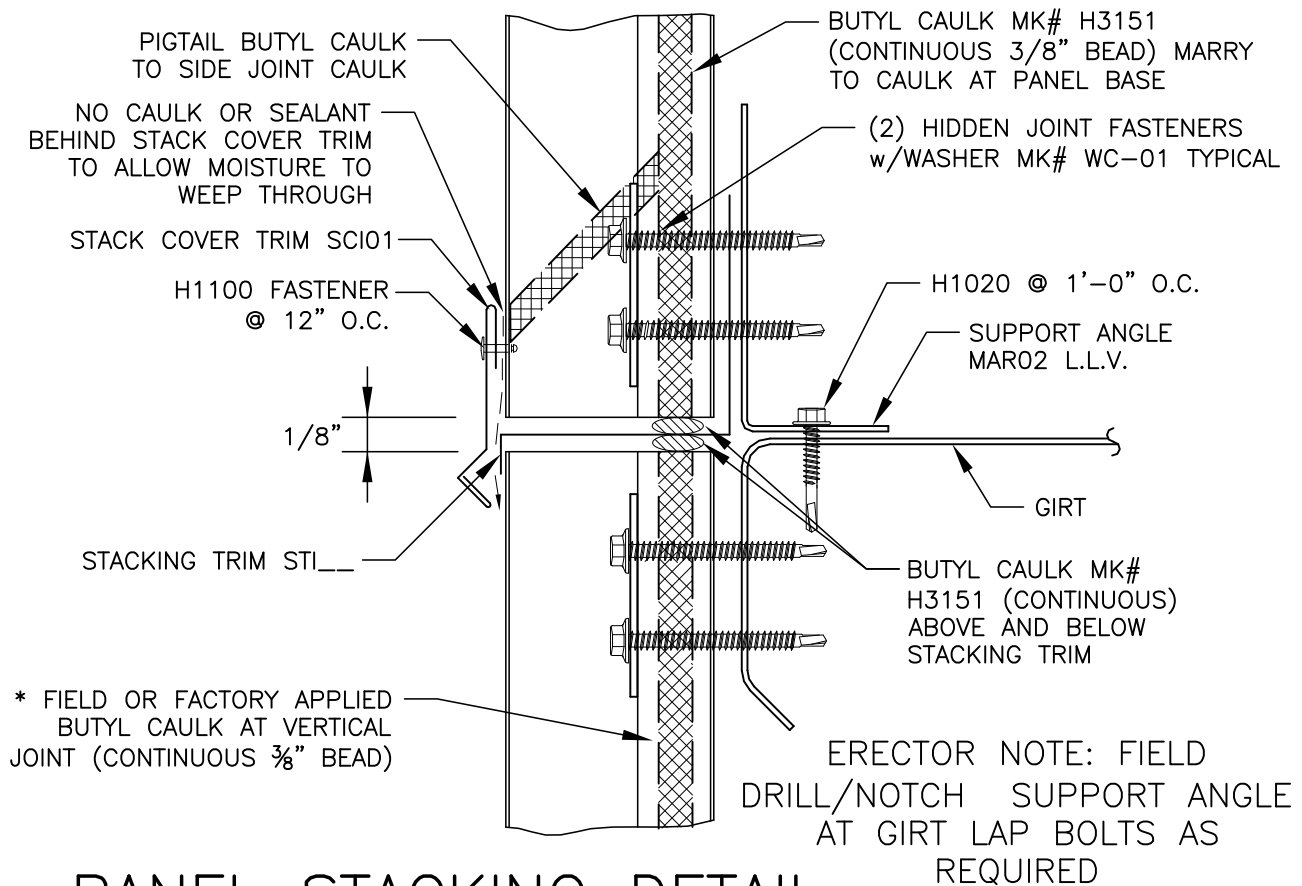
6.7.12



PRODUCT & ENGINEERING MANUAL

GA2042 - HORIZONTAL JOINT

PANEL THICKNESS	HIDDEN FASTENER	UNTIL WALL PANELS ARE INSTALLED, POP RIVETS ARE TO BE USED FOR TEMPORARY INTALLATION OF STACKING TRIM.	* ENSURE CAULK IS CONTINUOUS, IF NO CAULK IS PRESENT OR IF CAULK IS NOT CONTINUOUS, FIELD APPLY CONTINUOUS CAULK H3151
2"	#14 X 2 SDHH		
2 1/2"	#14 X 3 SDHH		
3"	#14 X 3 SDHH		
4"	#14 X 4 SDHH		



PANEL STACKING DETAIL

INSULATED WALL PANELS

PANEL SHIMMING MAY BE REQUIRED. PANEL SHIMS BY OTHERS

GA2042

This is the *standard* splice when panel lengths violate the Solar Load Chart length requirements. An alternate Exterior Relief Cut is available if you prefer longer length panels.

LAST REVISION
DATE: 02/16/15
BY: AK CHK: EGB

DETAIL NAME IF APPLICABLE
GA2042.dwg

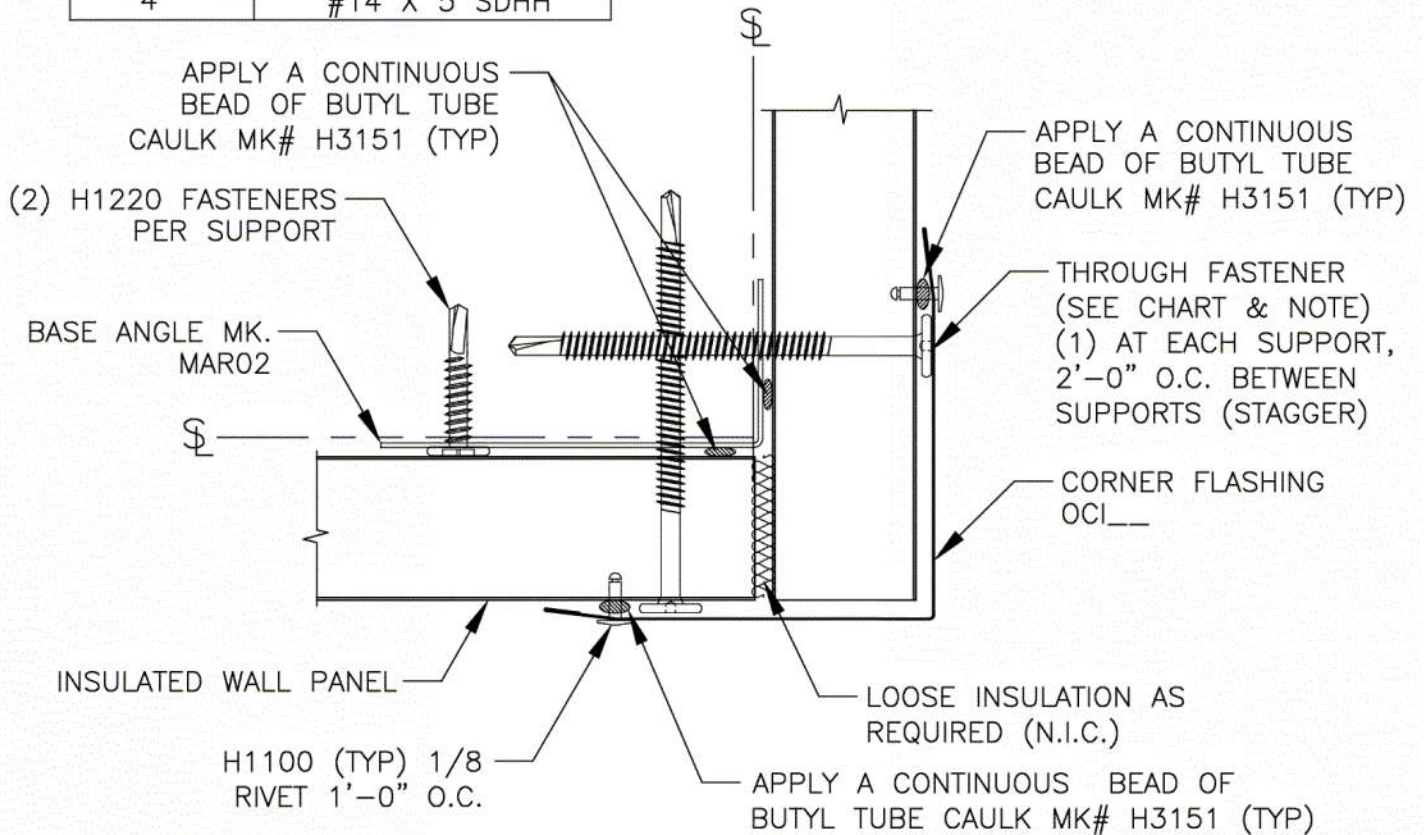
6.7.13



PRODUCT & ENGINEERING MANUAL

GC2021PE - OUTSIDE CORNER TRIM

PANEL THICKNESS	THROUGH FASTENER
2"	#14 X 3 SDHH
2 1/2"	#14 X 4 SDHH
3"	#14 X 4 SDHH
4"	#14 X 5 SDHH



OUTSIDE CORNER DETAIL

LAST REVISION
 DATE: 01/16/17
 BY: SAA CHK: AES

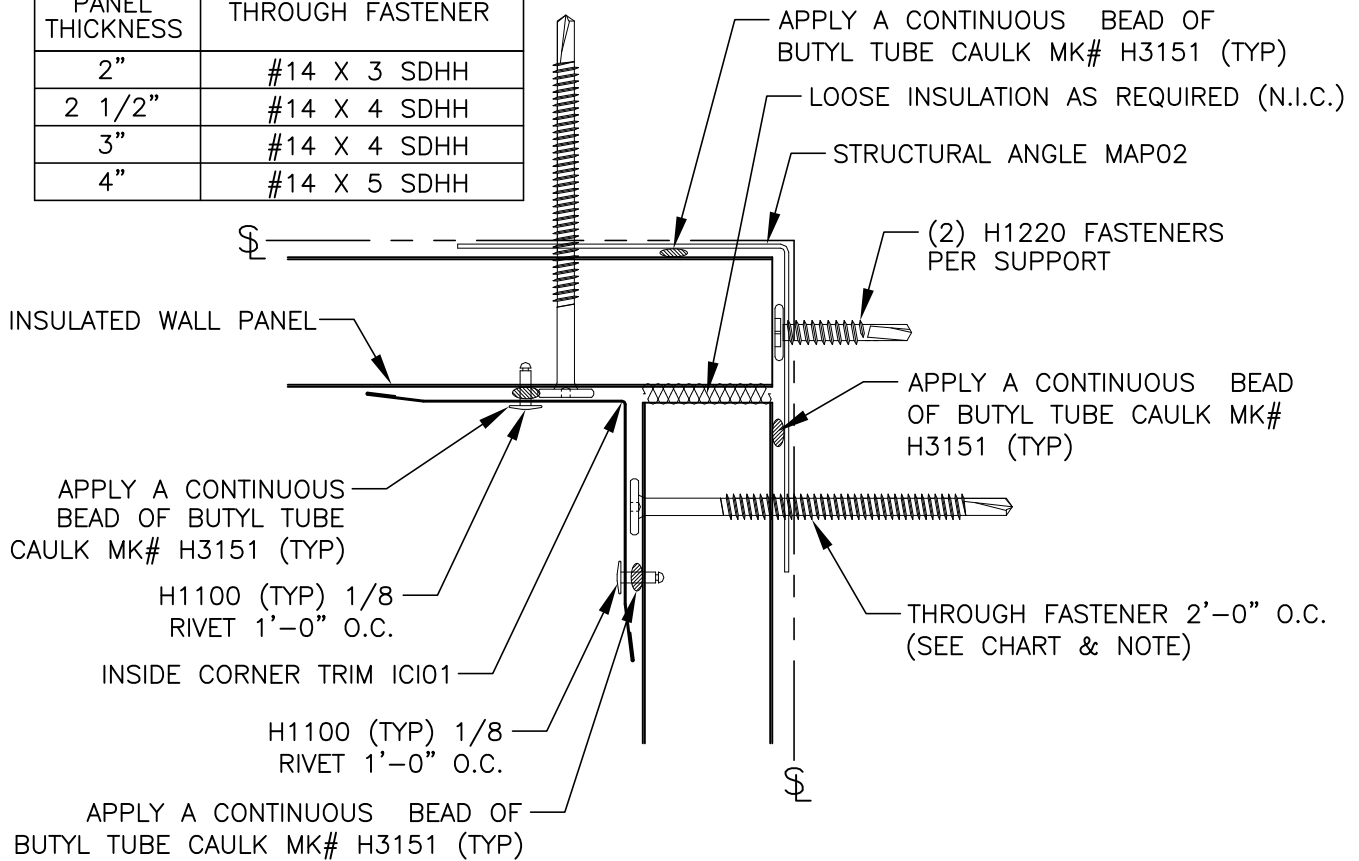
DETAIL NAME IF APPLICABLE
[GC2021PE.dwg](#)

6.7.14



GC2051PE - INSIDE CORNER TRIM

PANEL THICKNESS	THROUGH FASTENER
2"	#14 X 3 SDHH
2 1/2"	#14 X 4 SDHH
3"	#14 X 4 SDHH
4"	#14 X 5 SDHH

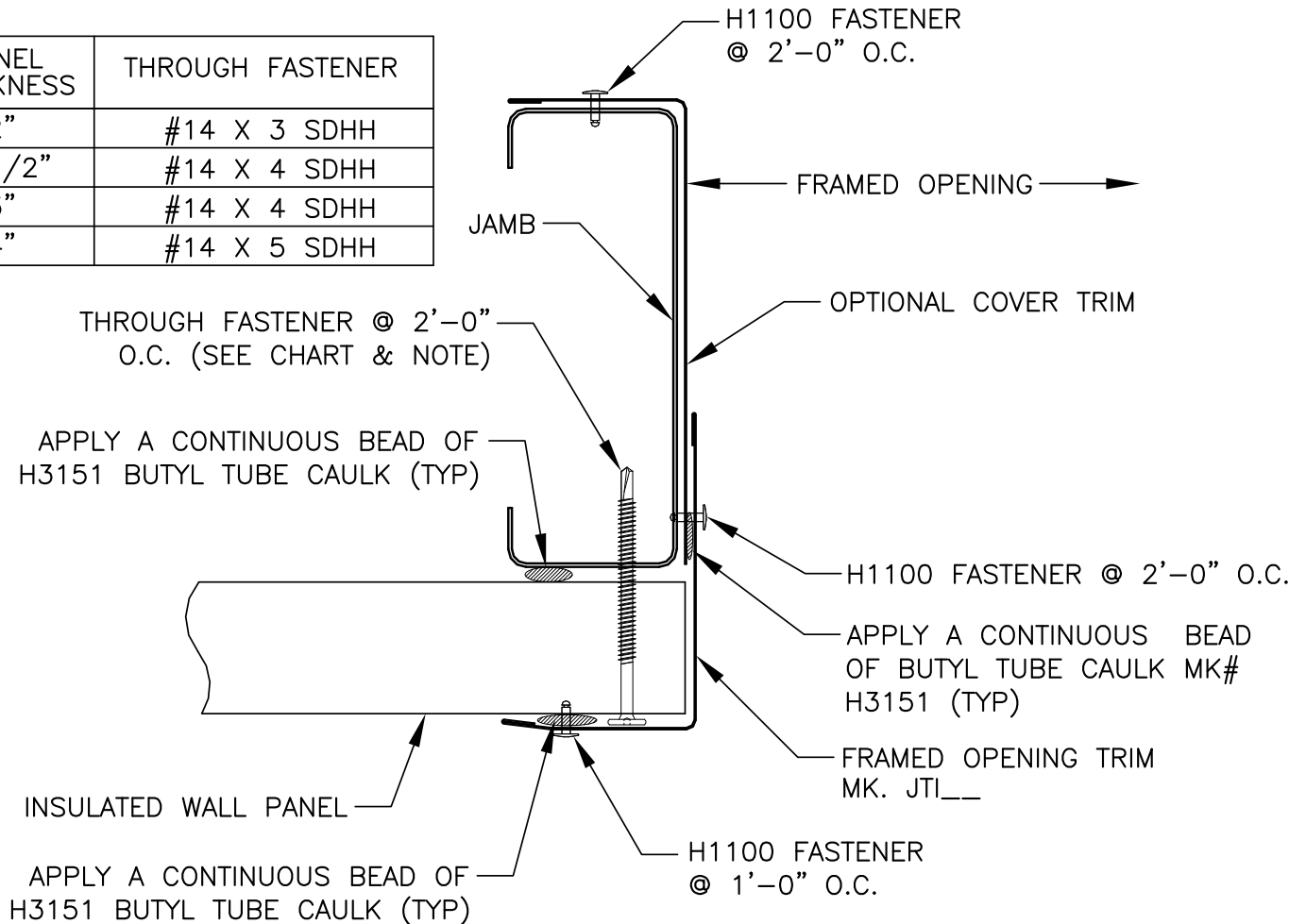


INSIDE CORNER DETAIL



GD2020PE - JAMB TRIM

PANEL THICKNESS	THROUGH FASTENER
2"	#14 X 3 SDHH
2 1/2"	#14 X 4 SDHH
3"	#14 X 4 SDHH
4"	#14 X 5 SDHH

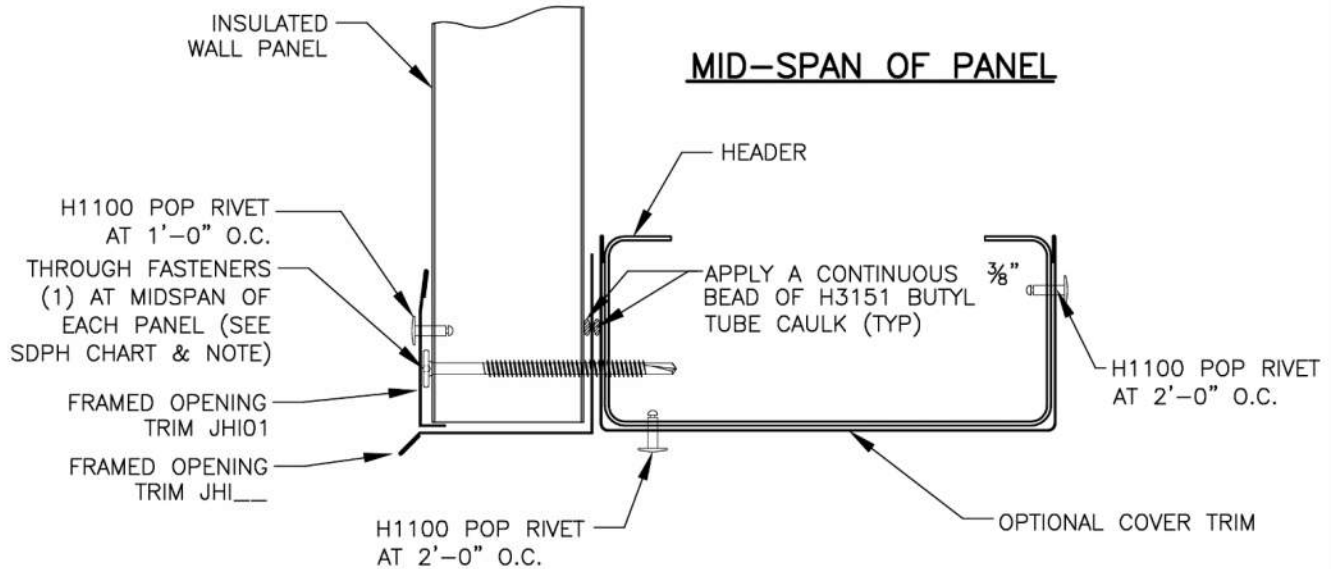


JAMB DETAIL

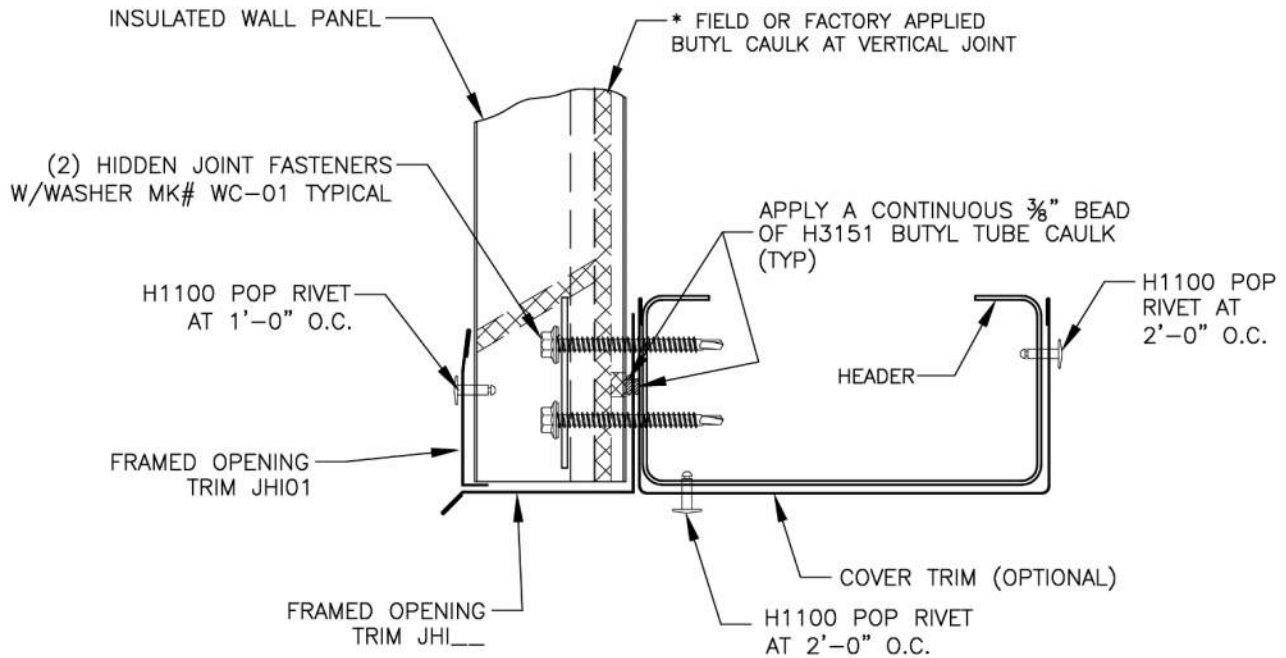


PRODUCT & ENGINEERING MANUAL

GD2040PE - HEADER TRIM



PANEL THICKNESS	THROUGH FASTENER	HIDDEN FASTENER
2"	#14 X 3 SDPH	#14 X 2 SDHH
2 1/2"	#14 X 4 SDPH	#14 X 3 SDHH
3"	#14 X 4 SDPH	#14 X 3 SDHH
4"	#14 X 5 SDPH	#14 X 4 SDHH



LAST REVISION
 DATE: 10/04/16
 BY: SAA CHK: EGB

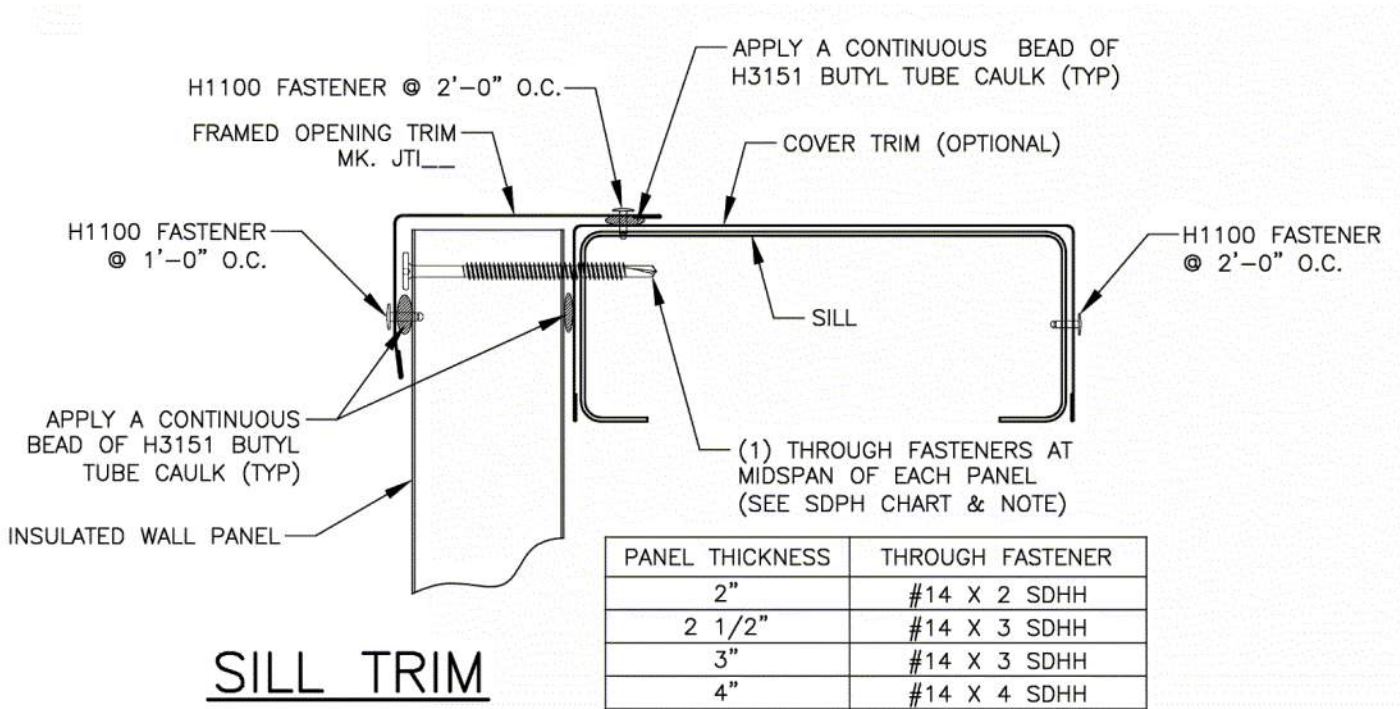
DETAIL NAME IF APPLICABLE
 GD2040PE.dwg

6.7.17



PRODUCT & ENGINEERING MANUAL

GD2070PE - SILL TRIM



LAST REVISION
 DATE: 10/04/16
 BY: SAA CHK: AES

DETAIL NAME IF APPLICABLE
GD2070PE.dwg

6.7.18