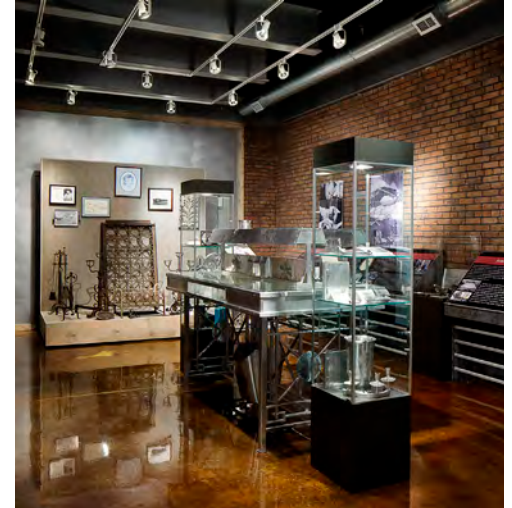


# Wendell August Headquarters



## LOCATION

Grove City, PA

## SIZE

60,000 sf

## WALL SYSTEM

Nucor Classic Wall™

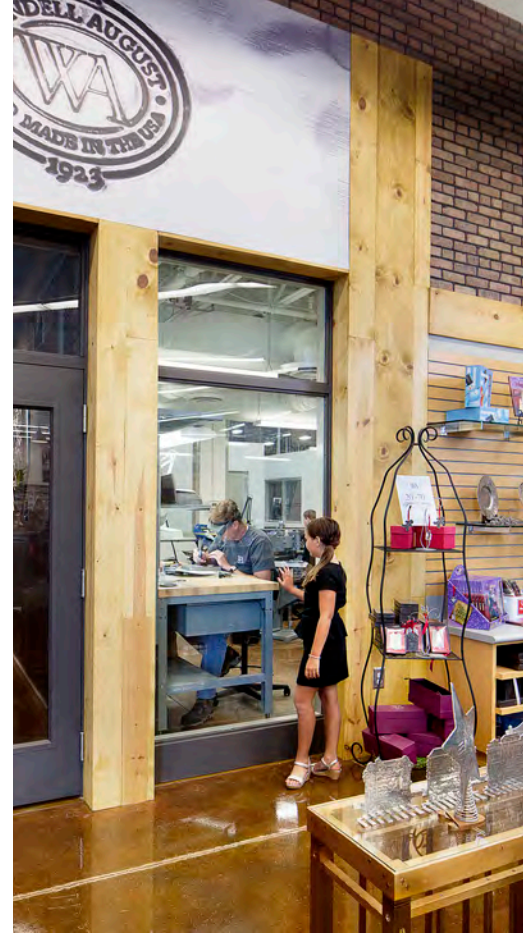
## ROOF SYSTEM

Nucor CFR™ Standing Seam

Wendell August Forge is America's oldest and largest forge, producing hand-wrought ornamental metalware and elegant giftware in aluminum and other metals since 1923. In March 2010, days after celebrating the acquisition of two of the largest product orders in its 90-year history, the company was in mourning. Its Grove City flagship location, which included manufacturing, corporate offices and retail was completely ravaged by fire.

Wanting to rise from the ashes as quickly as possible, Wendell August engaged Wesex Corporation, an Authorized Nucor Builder, as the Design-Build Developer to construct a facility that employees, the community and visitors alike would once again embrace as a destination.

A Nucor Buildings System pre-engineered metal building was selected as the ideal design solution for the project providing the most versatile and economical option. An immense amount of coordination between the Builder, Nucor Building Systems, and the architects using BIM was necessary to ensure every detail was accounted for. The result was a customized, contiguous pre-engineered facility featuring a 160' x 80' single slope structure housing the retail space connected to a 180' x 226' structure with stone piers, white Nucor Classic Wall Panel™, and a 226' architectural



sign band on the exterior of the manufacturing area. The exterior of the retail area features cement lap-siding and trim, three dormers to let in an abundance of natural light, and a decorative metal sign tower. The facility also used Nucor ClearBay® roof joist system and a Nucor composite CFR Standing Seam Roof System™.

After 8 months of construction, Wendell August's new, modern 60,000 square foot facility was occupied in late October 2013. The new structure houses every component of the business: corporate office headquarters, retail flagship store, manufacturing facility, as well as warehouse and distribution functions. The project was completed on time, and on-budget, thanks to the utilization of BIM throughout the collaboration process.

In late 2014 Wesex Corporation, along with project team members including: Desmone Architects, Civil & Environmental Consultants, Inc., and Nucor Building Systems, was presented with The National Award of Excellence for Commercial/Office Buildings from the Design-Build Institute of America for the Wendell August building.

