



ShakeoutPro+[®]



a **NUCOR** company

SPEEDY. SIMPLE.
SUPERIOR.

A web-based jobsite shakeout and staging
app designed with your needs in mind.



THE MOST **POWERFUL** TOOL ON (AND OFF) THE JOBSITE

Save time receiving, unloading and staging steel on your jobsites with ShakeoutPro+. Designed from the ground up with function and efficiency in mind, this app is free to use and its patented technology takes minutes to master. Your project model loads fast with the level of detail you need to get the job done. Map out your erection schedule, track the contents of each shipment, and report missing or damaged parts without ever leaving the app. Best of all, ShakeoutPro+ is available on any mobile device or desktop computer via a web browser.





ShakeoutPro+

Enter your job number to load building.

Open

3D BUILDING INFORMATION MODEL

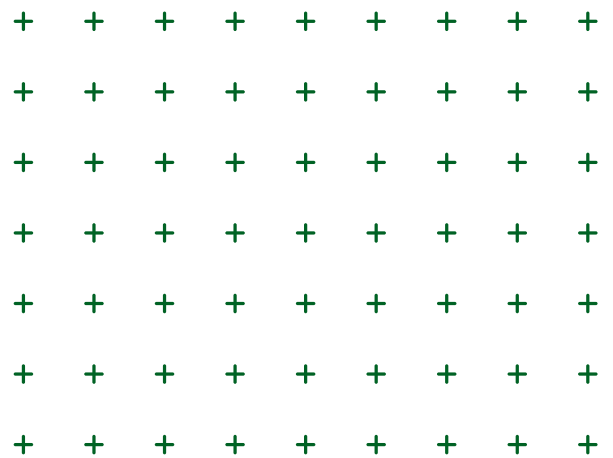
Within ShakeoutPro+, you can view your full building project on-screen before unloading it on-site through a rotatable, scalable 3D Building Information Model (BIM).





STAGING MADE **SIMPLE**

Managing your project on-screen is easy. As parts arrive, simply scan their barcodes with your smart device camera. Scanning the part highlights it on the model, showing you exactly where it fits within the project. You can then scale, rotate and toggle layers on and off to achieve the best view of each part and determine where to stage it for maximum efficiency.





BUILT TO MAKE YOUR JOB **EASIER**

ShakeoutPro+ allows you to catalog and track parts as you move throughout each phase of your project, so you can tell at a glance what has been unloaded, staged or assembled.

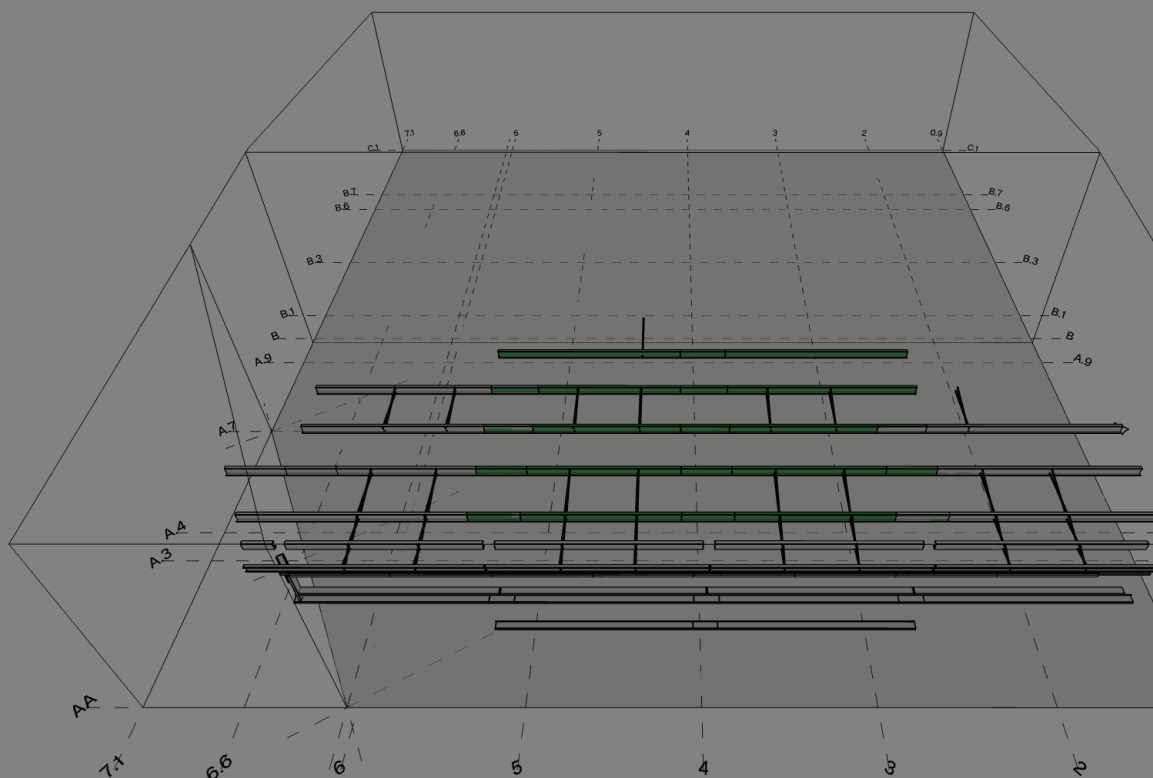
THE PACKING LIST

With the digital packing list, you can inventory steel quickly and color code each part to tag its status as received, installed, missing or damaged.

GRIDLINES

Within your project model, gridlines can be overlaid to help you quickly orient yourself with the building layout and easily identify where parts belong.





Model

 Import New Model

 Building

 Packing List

 Metrics

 Settings

Help

 Library

 E-mail Support

 Call Support



A QUICK OVERVIEW

Menu

Navigate your project details, connect with key division contacts and access helpful features like packing lists, part statuses and reporting, job metrics and more!

3D BIM

Layer Visibility Controls

Keep your eye on the finer details by controlling the visibility of specific parts, connection hardware, project phases and layers such as primary, secondary and sheeting.

Selection Mode

Tap between single or multiple parts to easily identify them and their source—truck, container, crate or bundle.

Pick Lists

Organize, delegate and schedule each workday by using pick lists to create and recall selected part groupings.

Scan

Capture the barcode with your device camera to identify a part.

Selection Tray

- Selected parts list.
- Visibility control.
- Part weights and other information.

Part Search

Manually search a part by its number to identify it.

Packing List

Review truck, container, crate or bundle contents and mark steel as received.

Model View Gestures

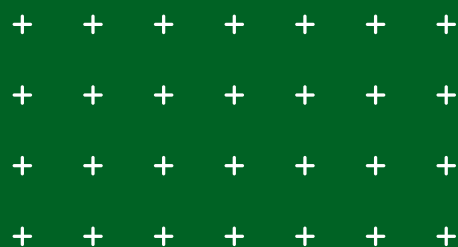
- Single-finger pan.
- Two-finger rotation.
- Pinch/push zoom.

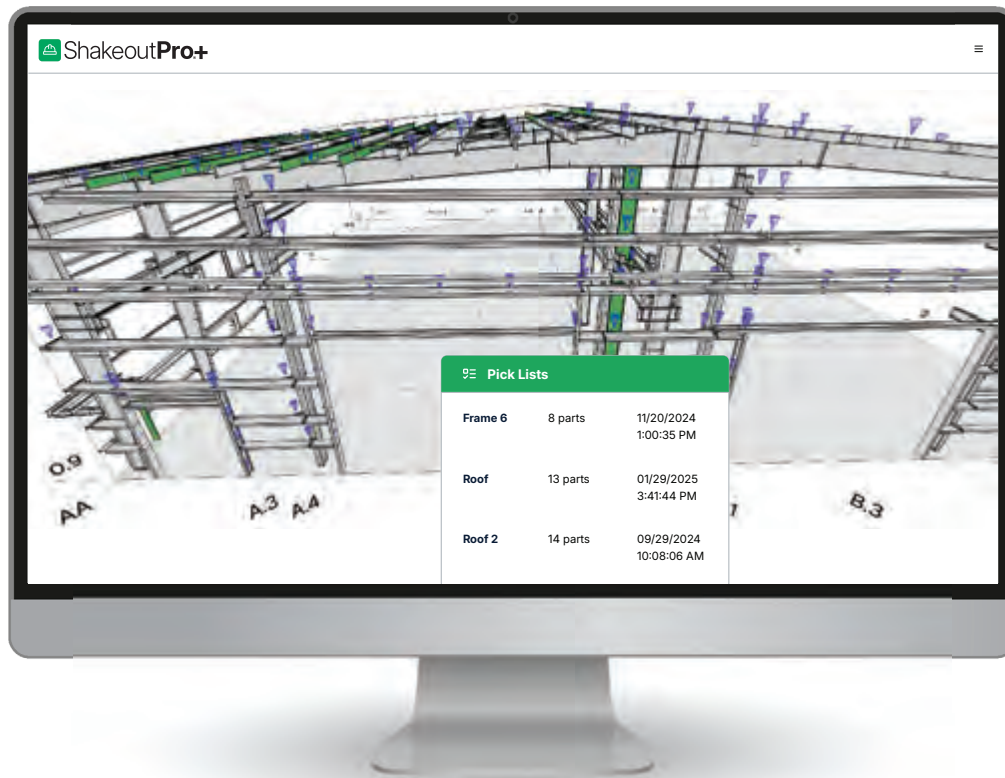
View Controls

Toggle between preset model views.

Connections

See connections in your model, including bolt assemblies and hardware.



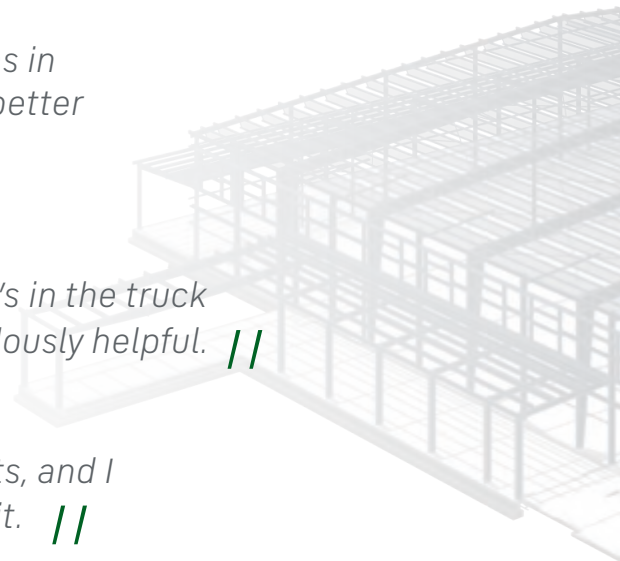


WHAT OTHERS ARE SAYING

// *Being able to view the full detailed connections in ShakeoutPro+ speeds things up and provides a better picture out in the field. //*

// *Breaking down what's in the truck shipment is tremendously helpful. //*

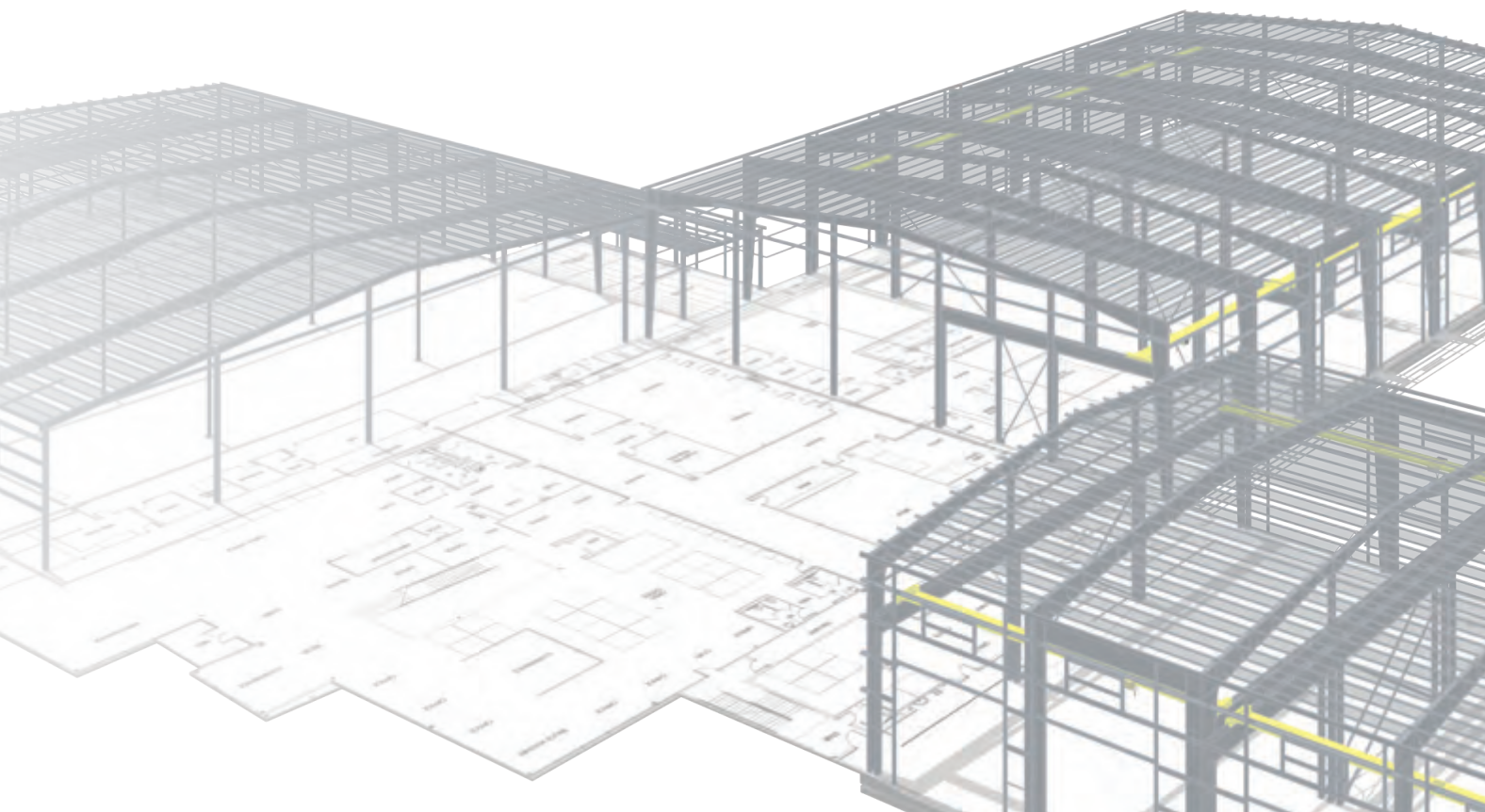
// *We use the app on complex projects, and I encourage my people to use it. //*





START SAVING

Select ShakeoutPro+ within eQuote during the quoting stage. It will be added to your job at no additional cost. Once fabrication and shipping are complete all you'll need is to enter the job number of your project when launching the app at **shakeoutpro.com**.



READY TO GET **STARTED?**

Scan the QR code below or contact
your representative today to learn how
ShakeoutPro+ can make your next
project a success.



SCAN TO LEARN
MORE ABOUT
SHAKEOUTPRO+



a **NUCOR** company

[SHAKEOUTPRO.COM](https://www.shakeoutpro.com)