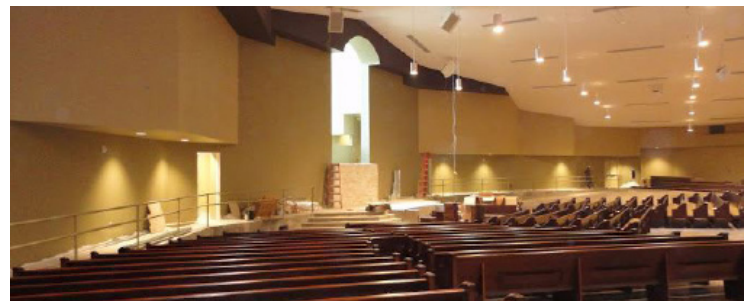


# Burleson Church of Christ



a **NUCOR** company



## LOCATION

Burleson, TX

## SIZE

52,100 sf

## WALL SYSTEM

Tilt Wall

## ROOF SYSTEM

VR16 II™ Vertical Rib Standing Seam

This religious facility includes a 175' clearspan sanctuary with a 32' eave height. The front sidewall features a skewed parapet condition and tower. Attached to the sanctuary is the administrative offices and educational facility. The exterior is precast tilt-up panels with a brick wainscot.