



PRODUCT & ENGINEERING MANUAL

TABLE OF CONTENTS

| | |
|---------------------------------------------|---|
| Spandrel Beam Details | 2 |
| CO0030 – SW/EW Double Beam | 2 |
| CO0050 – EW Beam to RF Tapered Column..... | 3 |
| CO0070 – SW Beam to RF Column | 4 |
| CO0130 – SW & EW Beams to P & B Column..... | 5 |

Refer to Section 4.9 for Tilt-Up / Pre-Cast Wall Details

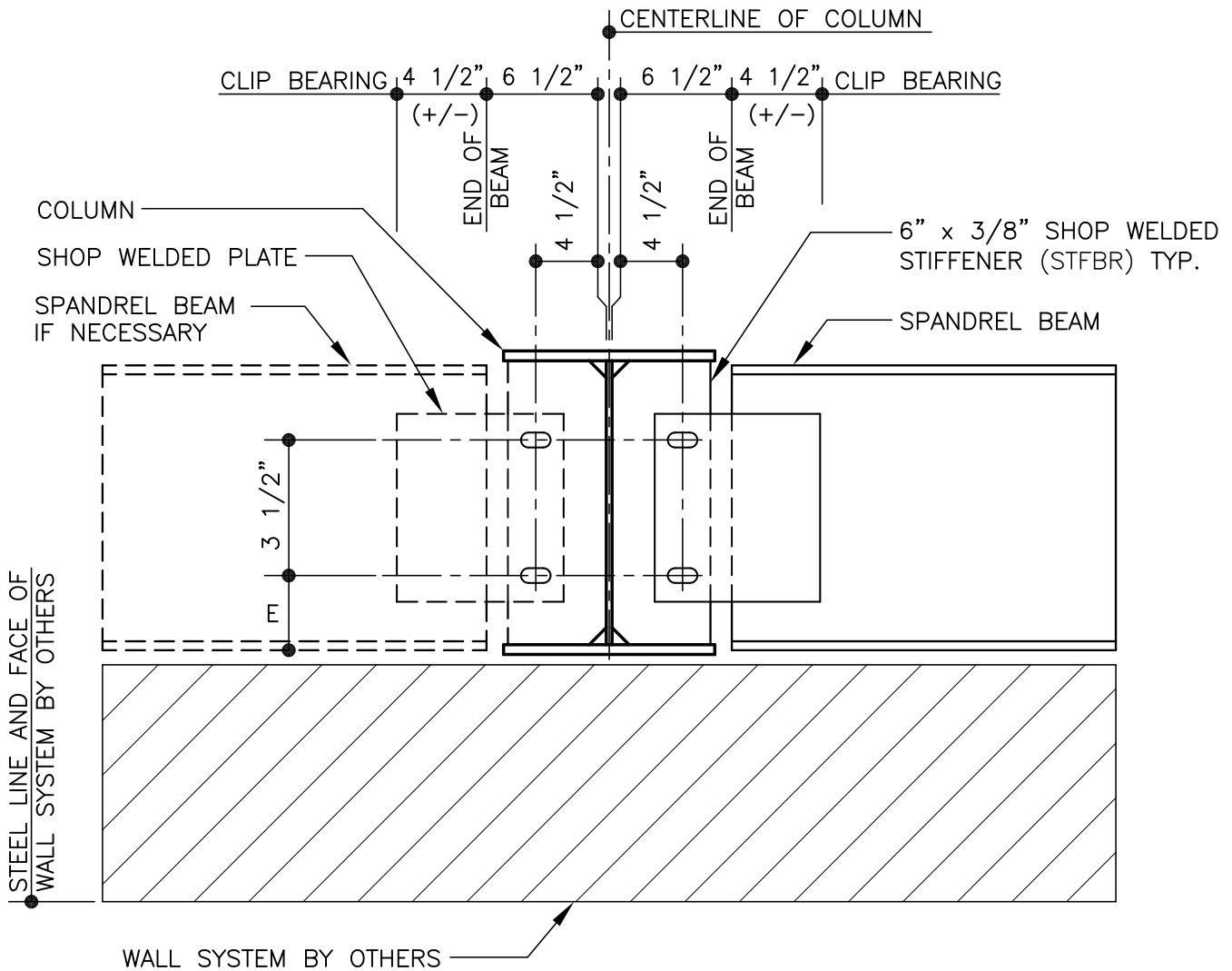
Refer to Section 4.10 for Non-Load Bearing Masonry Wall Details



PRODUCT & ENGINEERING MANUAL

SPANDREL BEAM DETAILS

CO0030 – SW/EW DOUBLE BEAM



SPANDREL BEAM CONNECTION

AT FRAME COLUMN

USE (4) C " ϕ x D " A325 BOLTS AND NUTS
 REFERENCE REFECTOR NOTE FOR TYPICAL WASHER REQUIREMENTS

CO0030

LAST REVISION
 DATE: 02/16/15
 BY: AK CHK: EGB

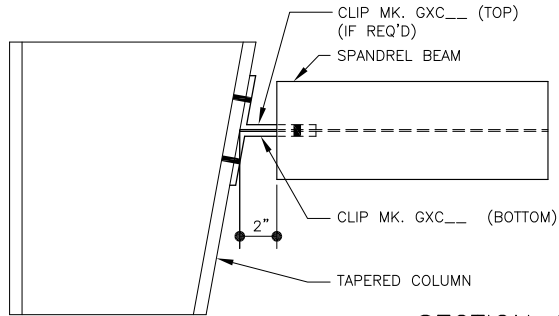
DETAIL NAME IF APPLICABLE
CO0030.DWG

4.14.2

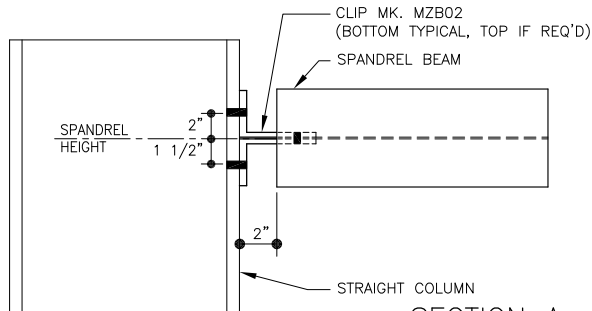


PRODUCT & ENGINEERING MANUAL

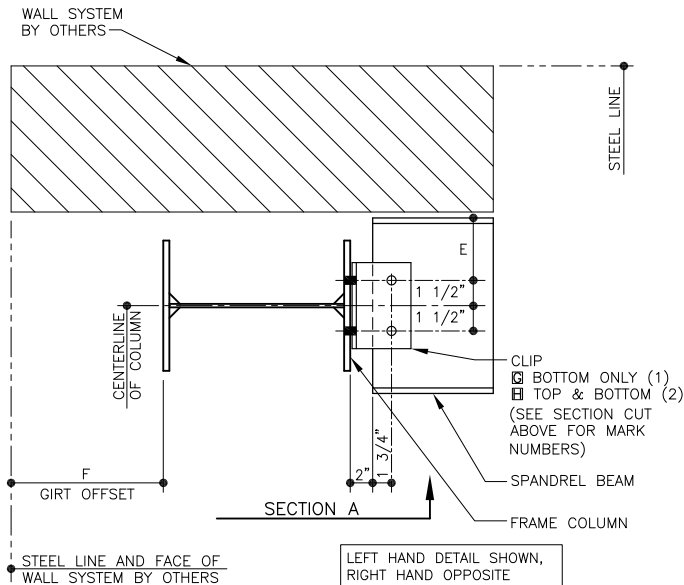
CO0050 – EW BEAM TO RF TAPERED COLUMN



SECTION A
AT TAPERED COLUMNS



SECTION A
AT STRAIGHT COLUMNS



SPANDREL BEAM CONNECTION

USE 3/4" ϕ x 3" A325 BOLTS AND NUTS
REFERENCE ERECTOR NOTE FOR TYPICAL WASHER REQUIREMENTS

CO0050

LAST REVISION
DATE: 02/16/15
BY: AK CHK: EGB

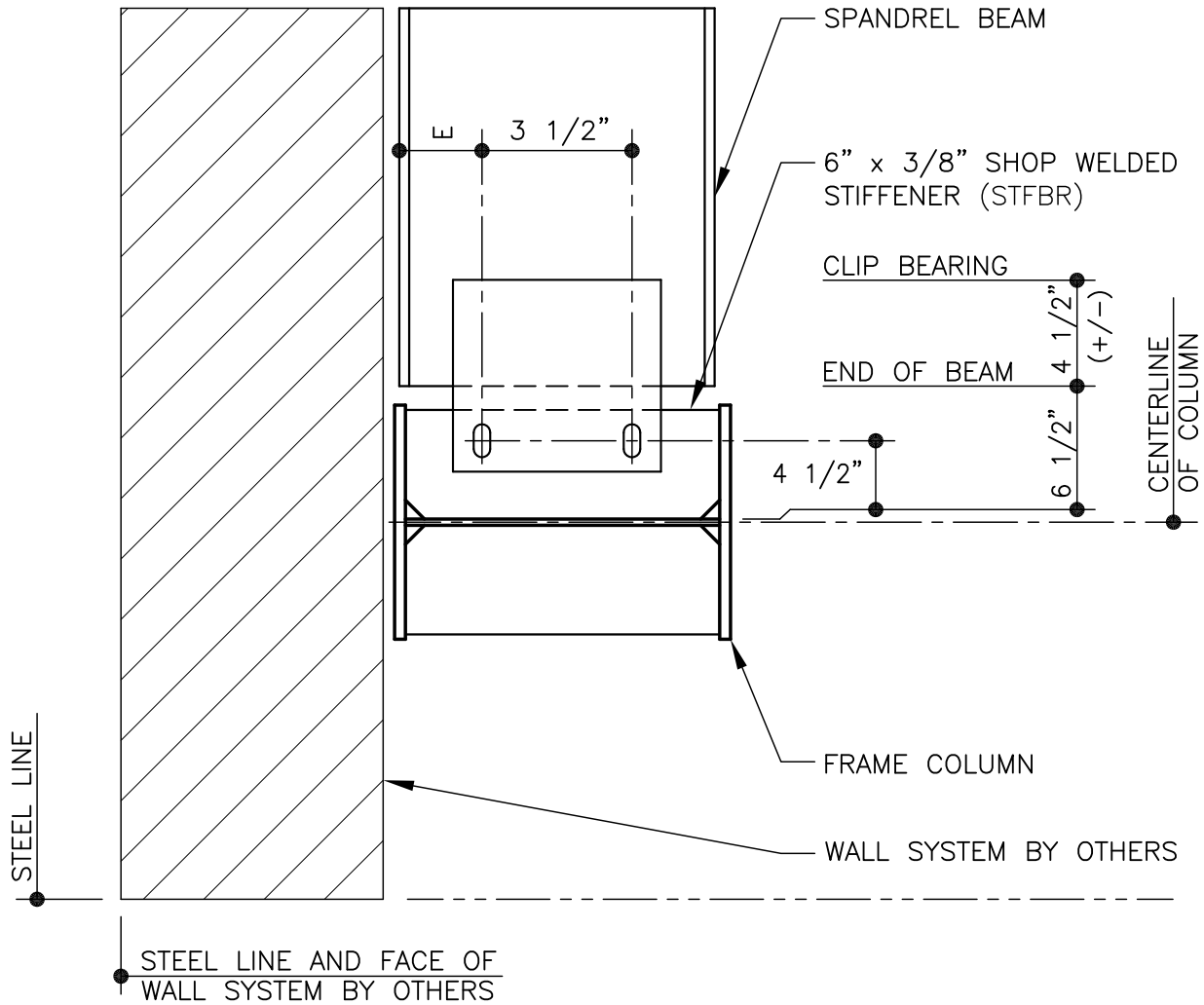
DETAIL NAME IF APPLICABLE
CO0050.DWG

4.14.3



PRODUCT & ENGINEERING MANUAL

CO0070 – SW BEAM TO RF COLUMN



SPANDREL BEAM CONNECTION

USE (2) C " ϕ x D " A325 BOLTS AND NUTS
REFERENCE ERECTOR NOTE FOR TYPICAL WASHER REQUIREMENTS

CO0070

LAST REVISION
DATE: 02/16/15
BY: AK CHK: EGB

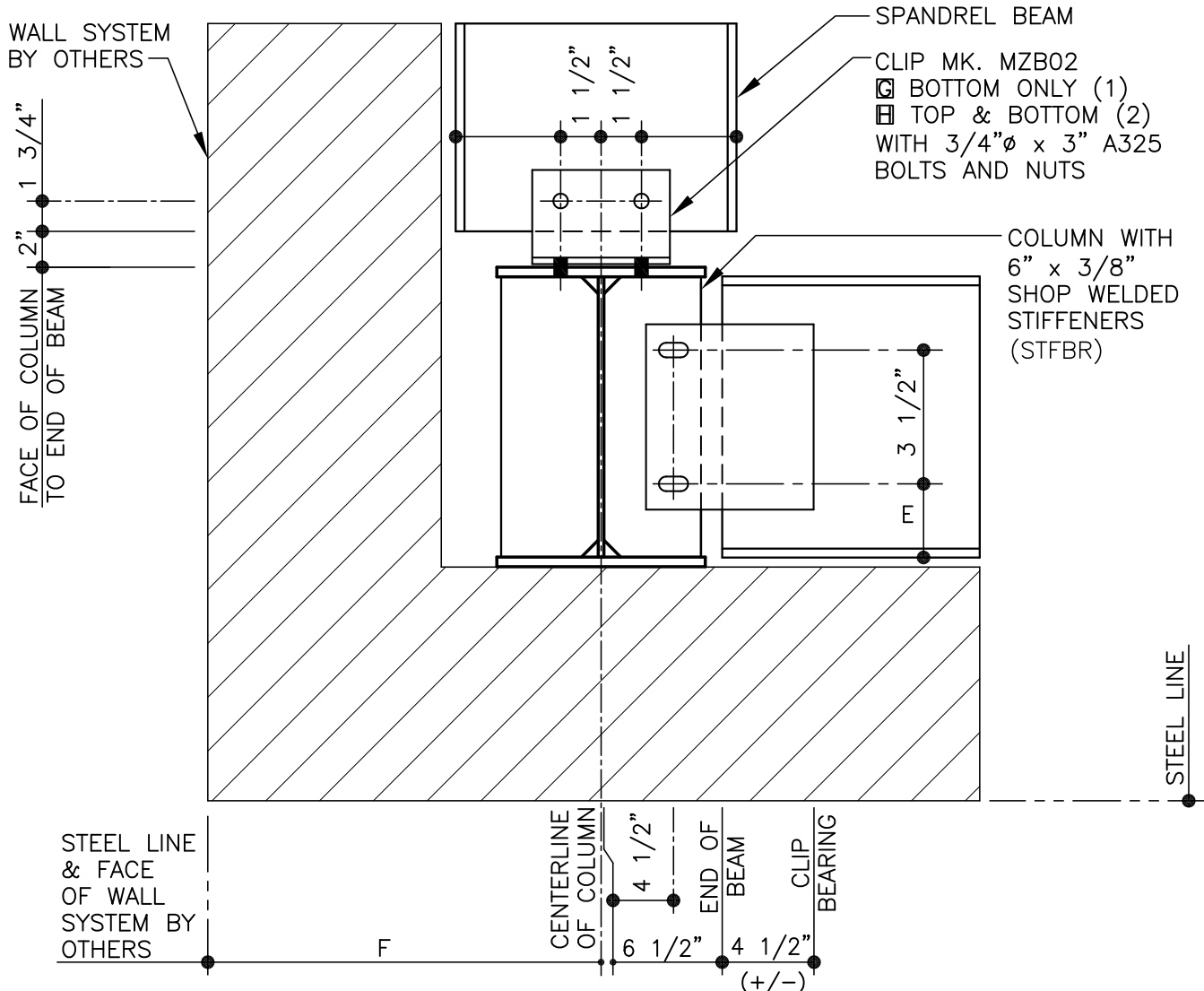
DETAIL NAME IF APPLICABLE
CO0070.DWG

4.14.4



PRODUCT & ENGINEERING MANUAL

CO0130 – SW & EW BEAMS TO P & B COLUMN



SPANDREL BEAM CONNECTION

AT CORNER

USE (2) C " φ x D " A325 BOLTS AND NUTS
 REFERENCE ERECTOR NOTE FOR TYPICAL WASHER REQUIREMENTS

CO0130

LAST REVISION
 DATE: 02/16/15
 BY: AK CHK: EGB

DETAIL NAME IF APPLICABLE
CO0130.DWG

4.14.5