



PRODUCT & ENGINEERING MANUAL

TABLE OF CONTENTS

BELOW EAVE DETAILS.....	2
AU0005 – (Below Eave).....	2
LOW EAVE DETAILS	3
AU0055 – At Eave	3
HIGH EAVE DETAILS.....	4
AU0110 – Flush (At Eave)	4
AU0120 – Inset (At Eave)	5
AU0130 – 8” Bypass (At Eave).....	6
AU0140 – Bypass (At Eave)	7
AU0150 – 12” Bypass (At Eave).....	8
WEB CONNECTION DETAILS.....	9
AU0160 – Web Connection	9

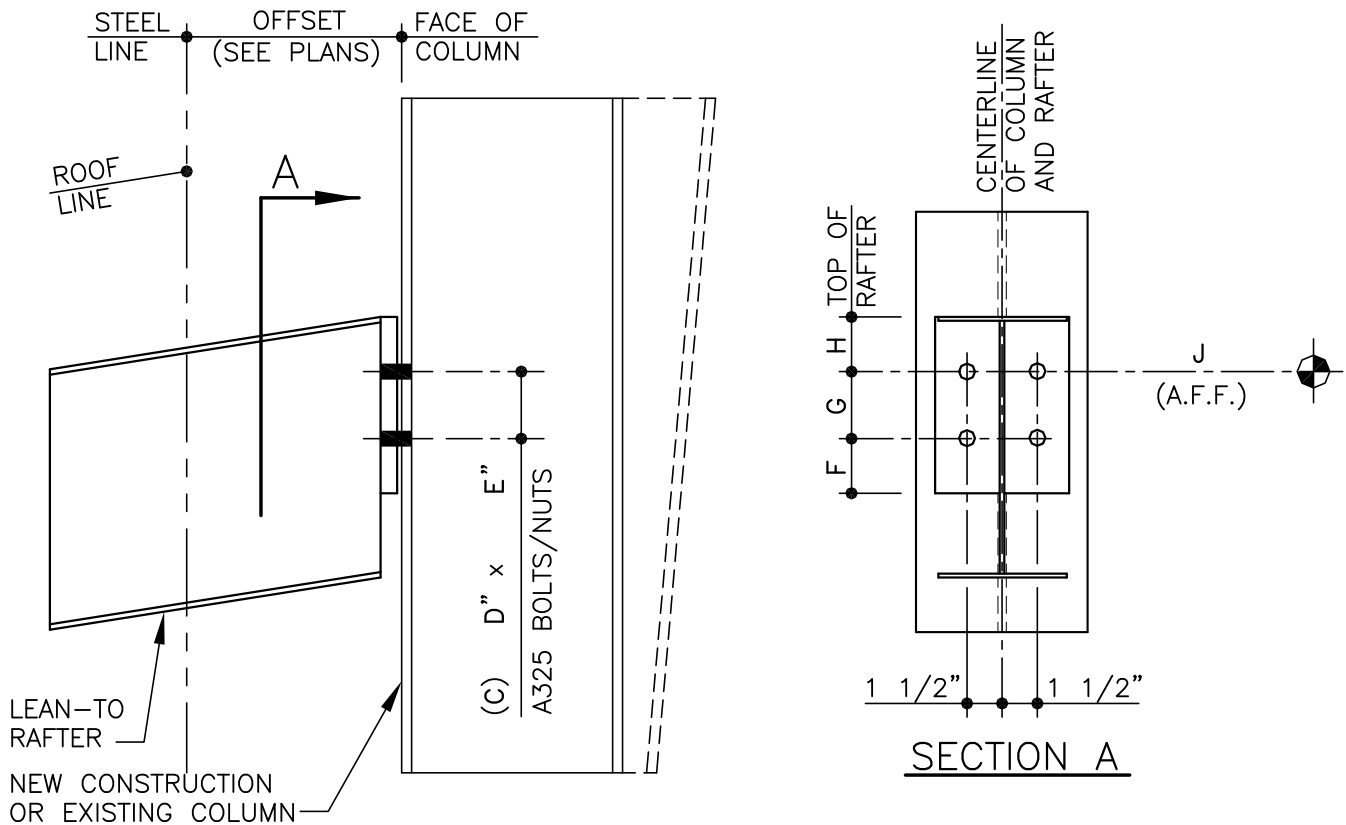
NOTE: Section **“4.8-Future Expansion Details”** has similar details that could also be used in a Lean-To type connection. Those details have “Spacers” to make the Rafter to Column Connections at the Steel Line.



PRODUCT & ENGINEERING MANUAL

BELOW EAVE DETAILS

AU0005 – (BELOW EAVE)



THE FULL HEIGHT COLUMN MAY BE STRAIGHT OR TAPERED. THIS DETAIL IS INTENDED TO SHOW THE CONNECTION OF THE LEAN-TO RAFTER ONLY.

AT AN EXISTING COLUMN CONDITION, FIELD DRILL THE CONNECTION HOLES 1/16" LARGER THAN THE BOLT DIAMETER

LEAN-TO RAFTER TO COLUMN

BELOW EAVE

AU0005

LAST REVISION
 DATE: 02/16/15
 BY: AK CHK: EGB

DETAIL NAME IF APPLICABLE
AU0005.DWG

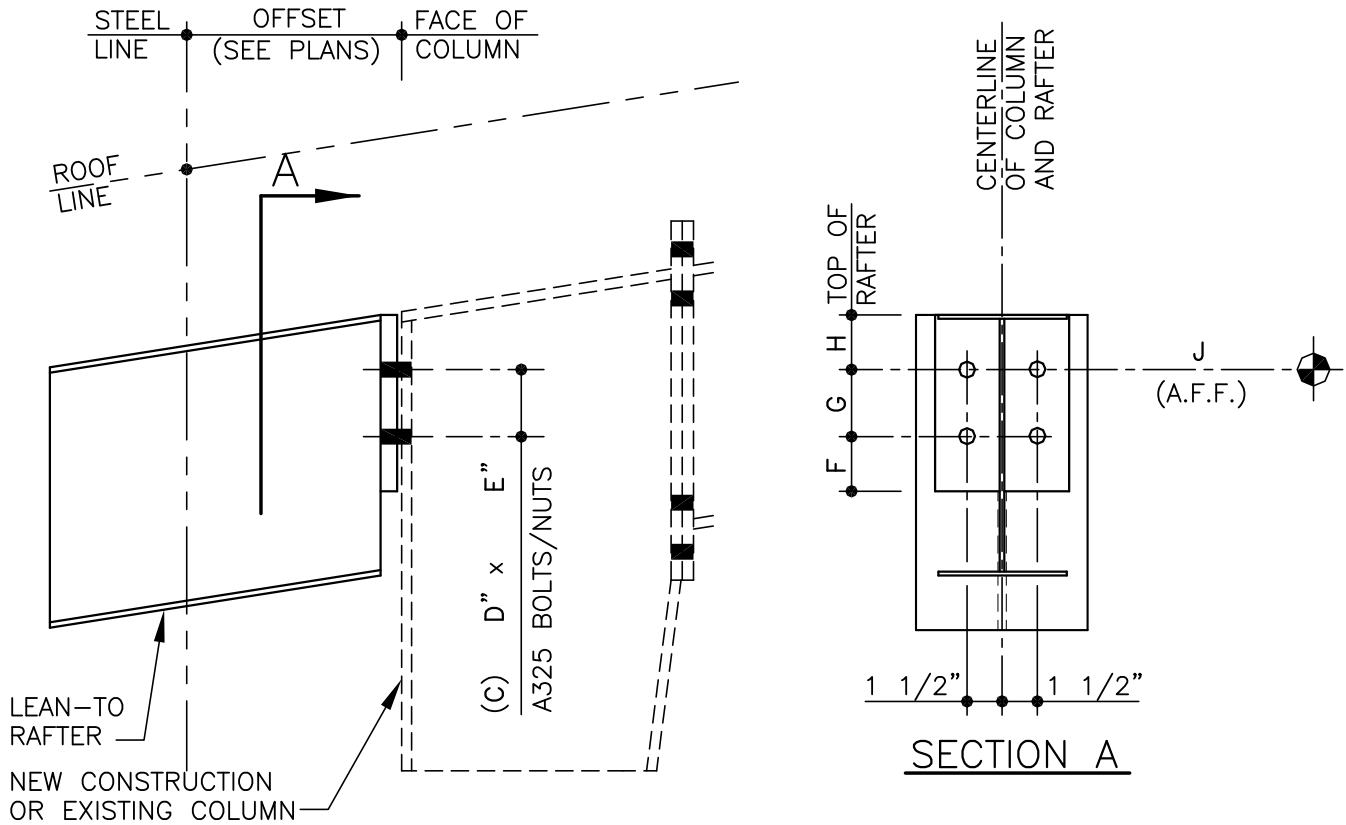
4.13.2



PRODUCT & ENGINEERING MANUAL

LOW EAVE DETAILS

AU0055 – AT EAVE



THE FULL HEIGHT COLUMN MAY BE STRAIGHT OR TAPERED. THIS DETAIL IS INTENDED TO SHOW THE CONNECTION OF THE LEAN-TO RAFTER ONLY.

AT AN EXISTING COLUMN CONDITION, FIELD DRILL THE CONNECTION HOLES 1/16" LARGER THAN THE BOLT DIAMETER

LEAN-TO RAFTER TO COLUMN

AT EAVE

AU0055

LAST REVISION
 DATE: 02/16/15
 BY: AK CHK: EGB

DETAIL NAME IF APPLICABLE
AU0055.DWG

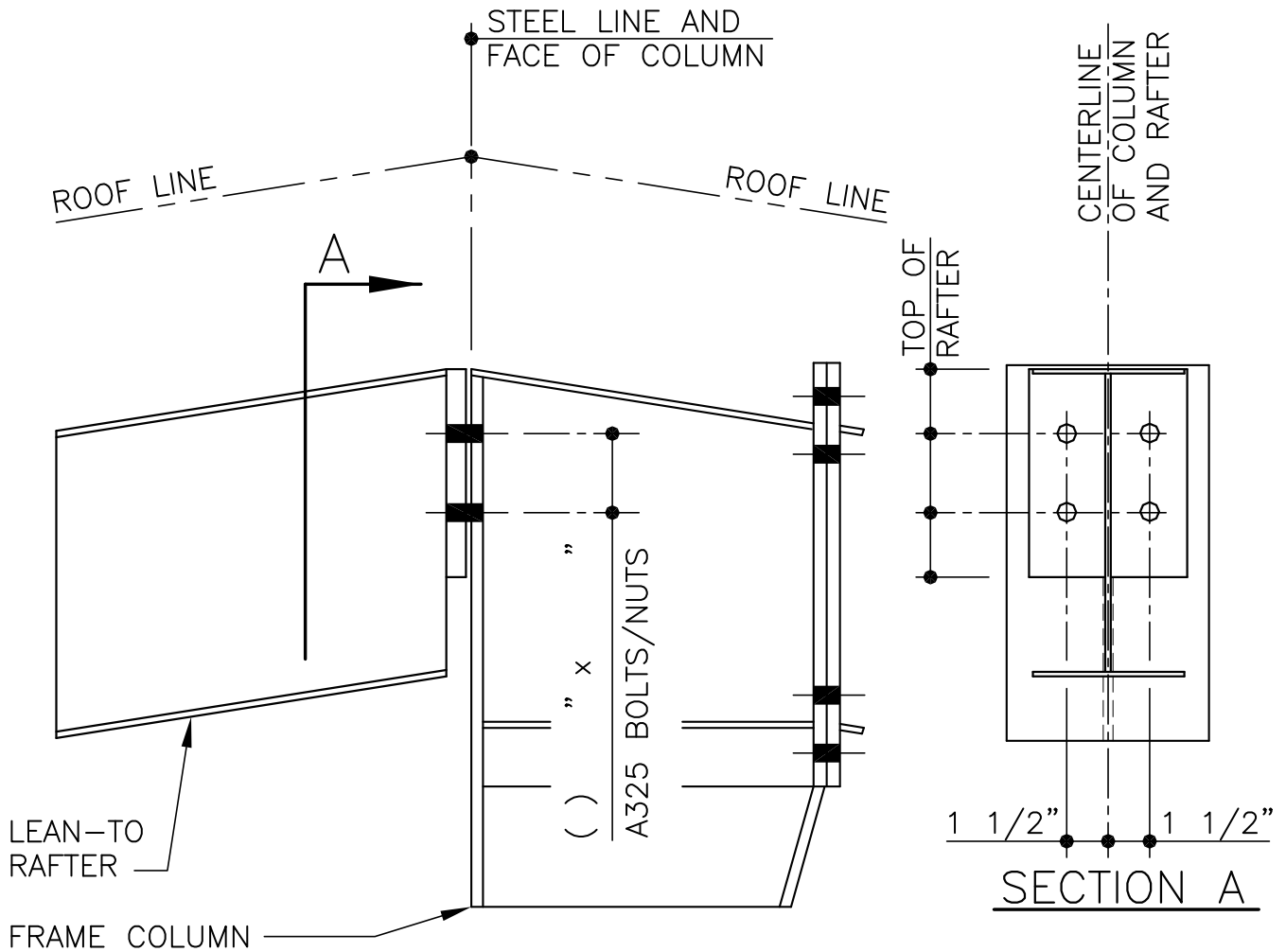
4.13.3



PRODUCT & ENGINEERING MANUAL

HIGH EAVE DETAILS

AU0110 – FLUSH (AT EAVE)



THE FULL HEIGHT COLUMN MAY BE STRAIGHT OR TAPERED. THIS DETAIL IS INTENDED TO SHOW THE CONNECTION OF THE LEAN-TO RAFTER ONLY.

LEAN-TO RAFTER TO COLUMN

(FLUSH CONDITON AT EAVE)
 RAFTER TO FLANGE OF FULL HEIGHT COLUMN WITHOUT SPACFR

AU0110

LAST REVISION
 DATE: 02/16/15
 BY: AK CHK: EGB

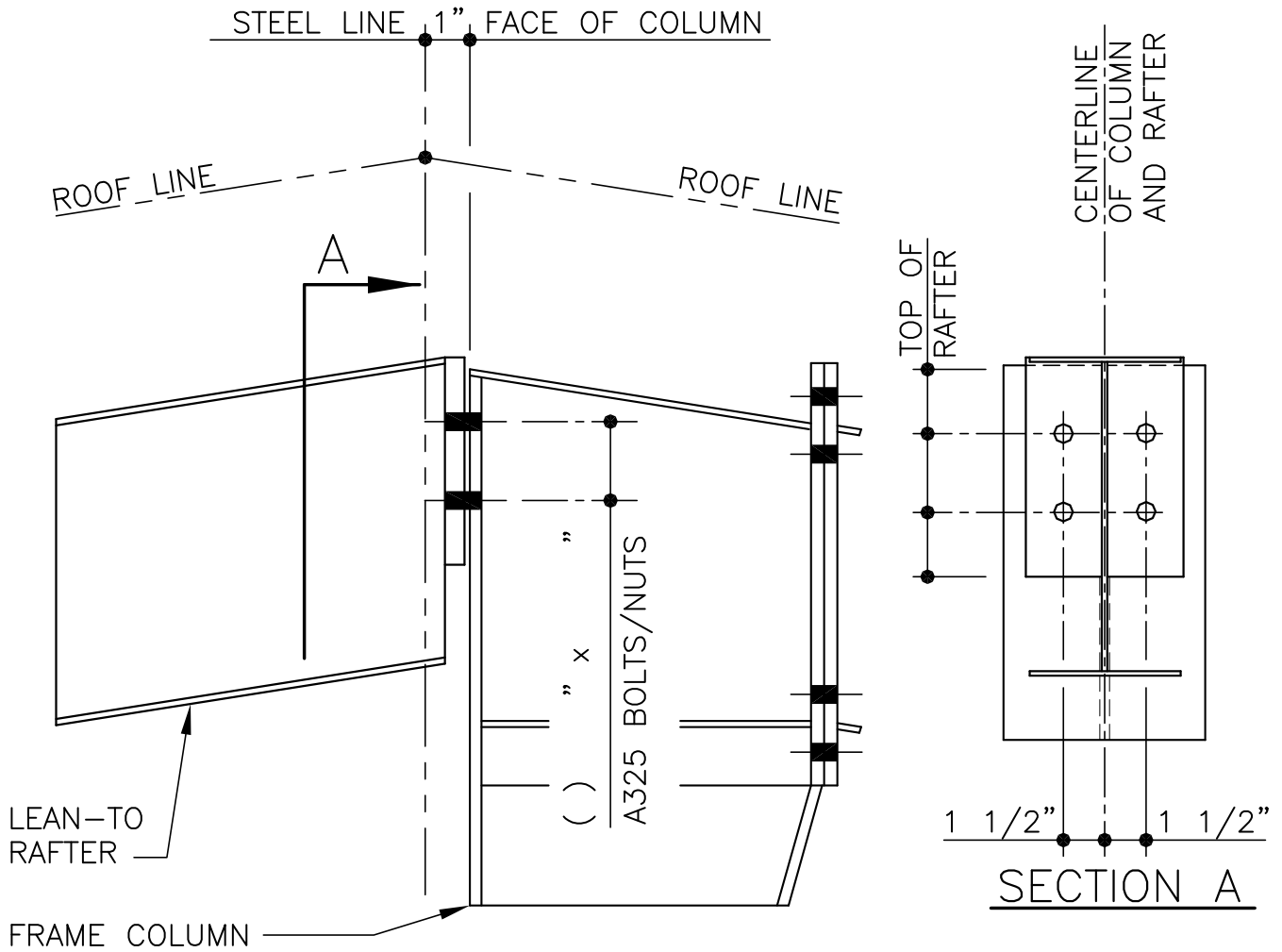
DETAIL NAME IF APPLICABLE
AU0110.DWG

4.13.4



PRODUCT & ENGINEERING MANUAL

AU0120 – INSET (AT EAVE)



THE FULL HEIGHT COLUMN MAY BE STRAIGHT OR TAPERED. THIS DETAIL IS INTENDED TO SHOW THE CONNECTION OF THE LEAN-TO RAFTER ONLY.

LEAN-TO RAFTER TO COLUMN

(INSET CONDITON AT EAVE)

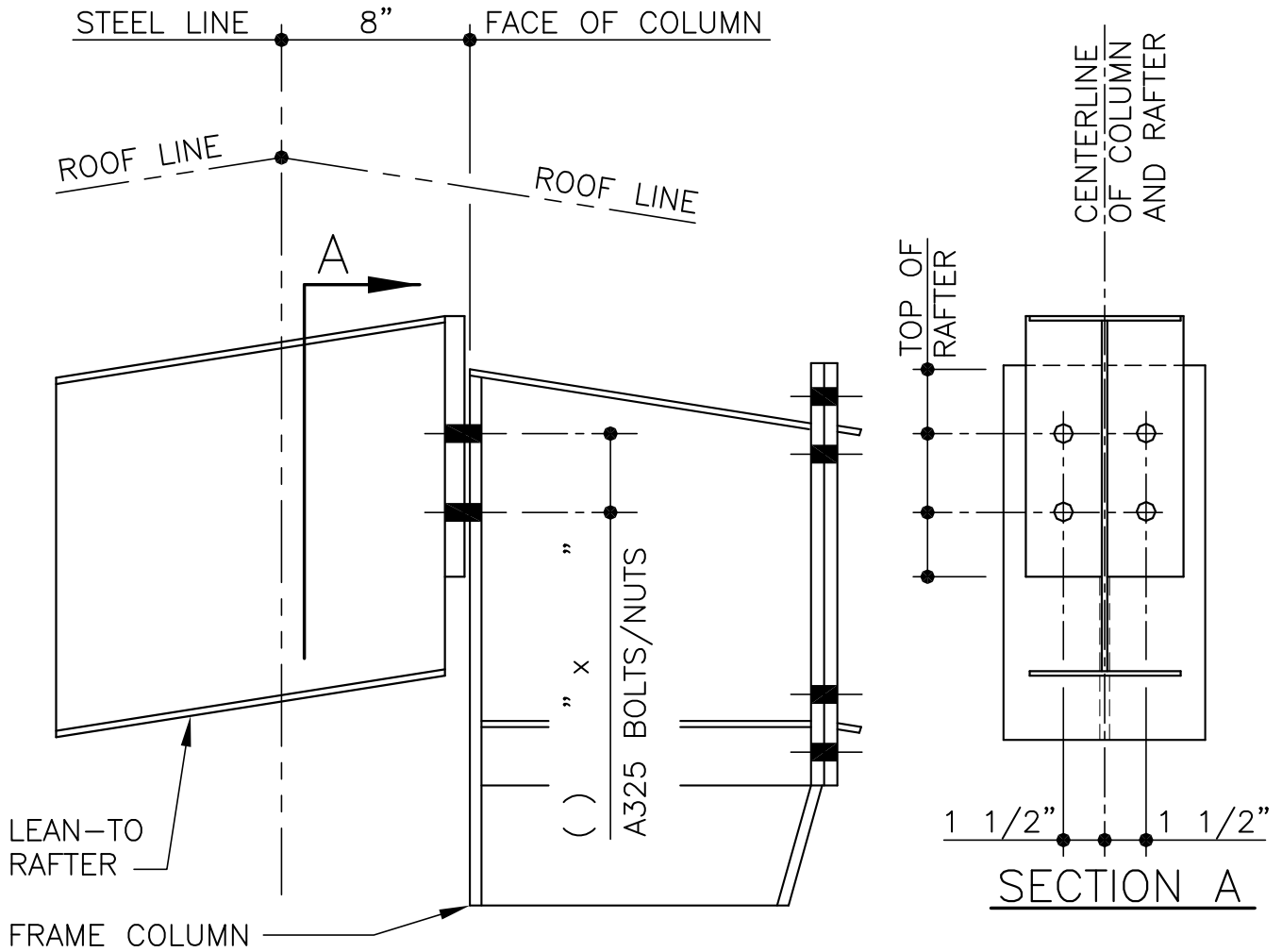
RAFTER TO FLANGE OF FULL HEIGHT COLUMN WITHOUT SPACFR

AU0120



PRODUCT & ENGINEERING MANUAL

AU0130 – 8" BYPASS (AT EAVE)



THE FULL HEIGHT COLUMN MAY BE STRAIGHT OR TAPERED. THIS DETAIL IS INTENDED TO SHOW THE CONNECTION OF THE LEAN-TO RAFTER ONLY.

LEAN-TO RAFTER TO COLUMN

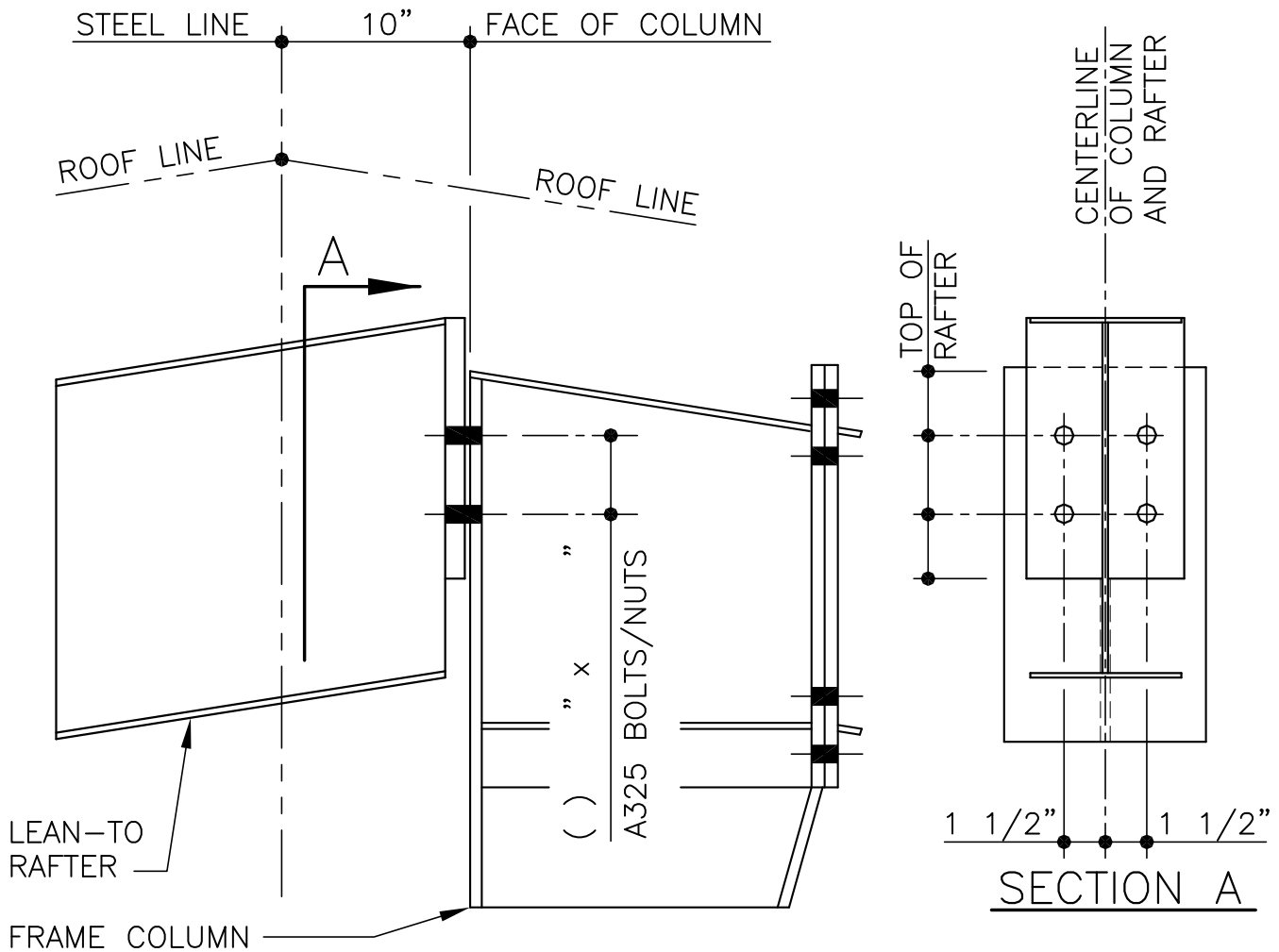
(8" BYPASS CONDITON AT EAVE)
 RAFTER TO FLANGE OF FULL HEIGHT COLUMN WITHOUT SPACFR

AU0130



PRODUCT & ENGINEERING MANUAL

AU0140 – BYPASS (AT EAVE)



THE FULL HEIGHT COLUMN MAY BE STRAIGHT OR TAPERED. THIS DETAIL IS INTENDED TO SHOW THE CONNECTION OF THE LEAN-TO RAFTER ONLY.

LEAN-TO RAFTER TO COLUMN

(10" BYPASS CONDITION AT EAVE)
 RAFTER TO FLANGE OF FULL HEIGHT COLUMN WITHOUT SPACER

AU0140

LAST REVISION
 DATE: 02/16/15
 BY: AK CHK: EGB

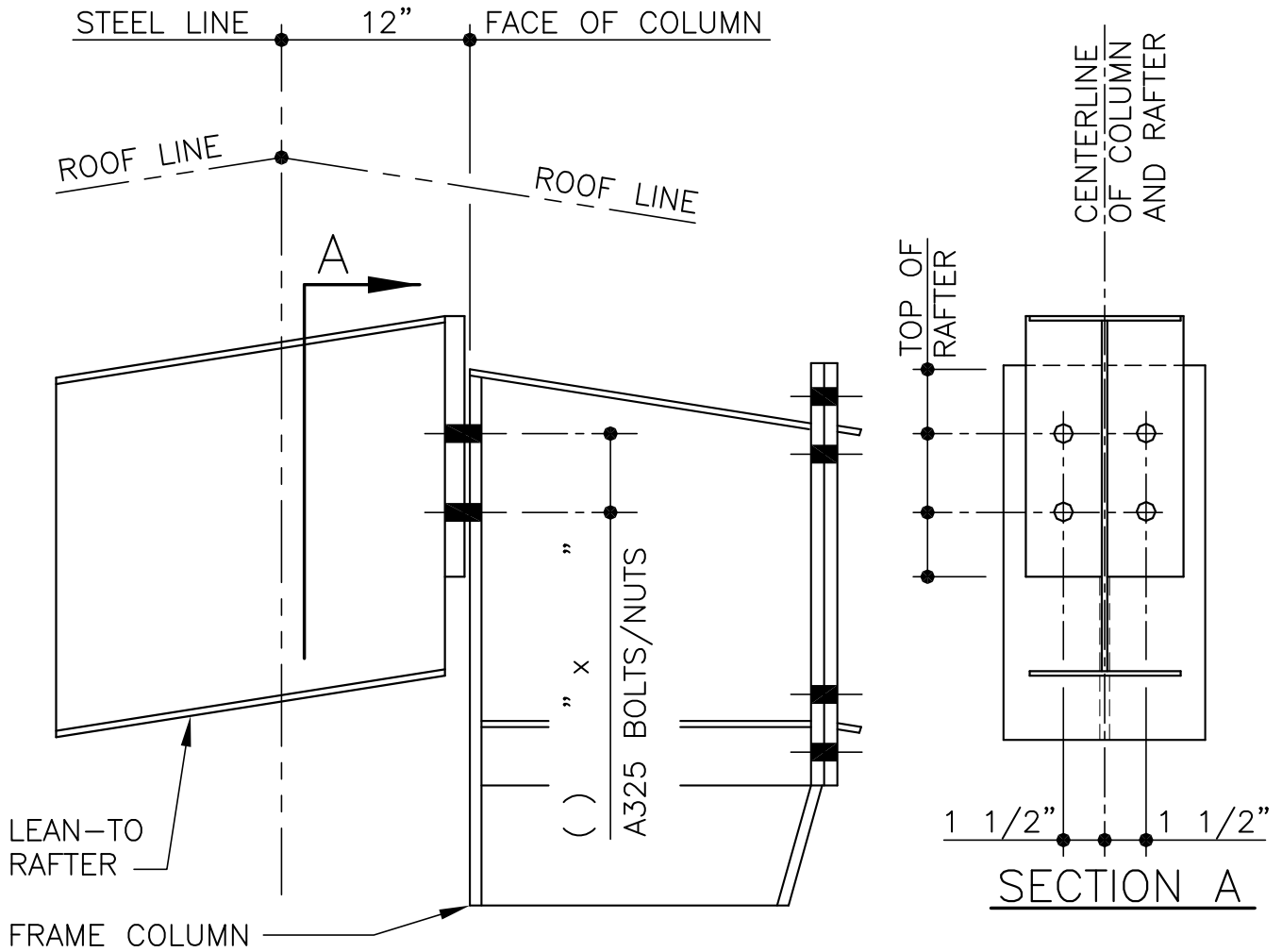
DETAIL NAME IF APPLICABLE
AU0140.DWG

4.13.7



PRODUCT & ENGINEERING MANUAL

AU0150 – 12" BYPASS (AT EAVE)



THE FULL HEIGHT COLUMN MAY BE STRAIGHT OR TAPERED. THIS DETAIL IS INTENDED TO SHOW THE CONNECTION OF THE LEAN-TO RAFTER ONLY.

LEAN-TO RAFTER TO COLUMN

(12" BYPASS CONDITON AT EAVE)

RAFTER TO FLANGE OF FULL HEIGHT COLUMN WITHOUT SPACFR

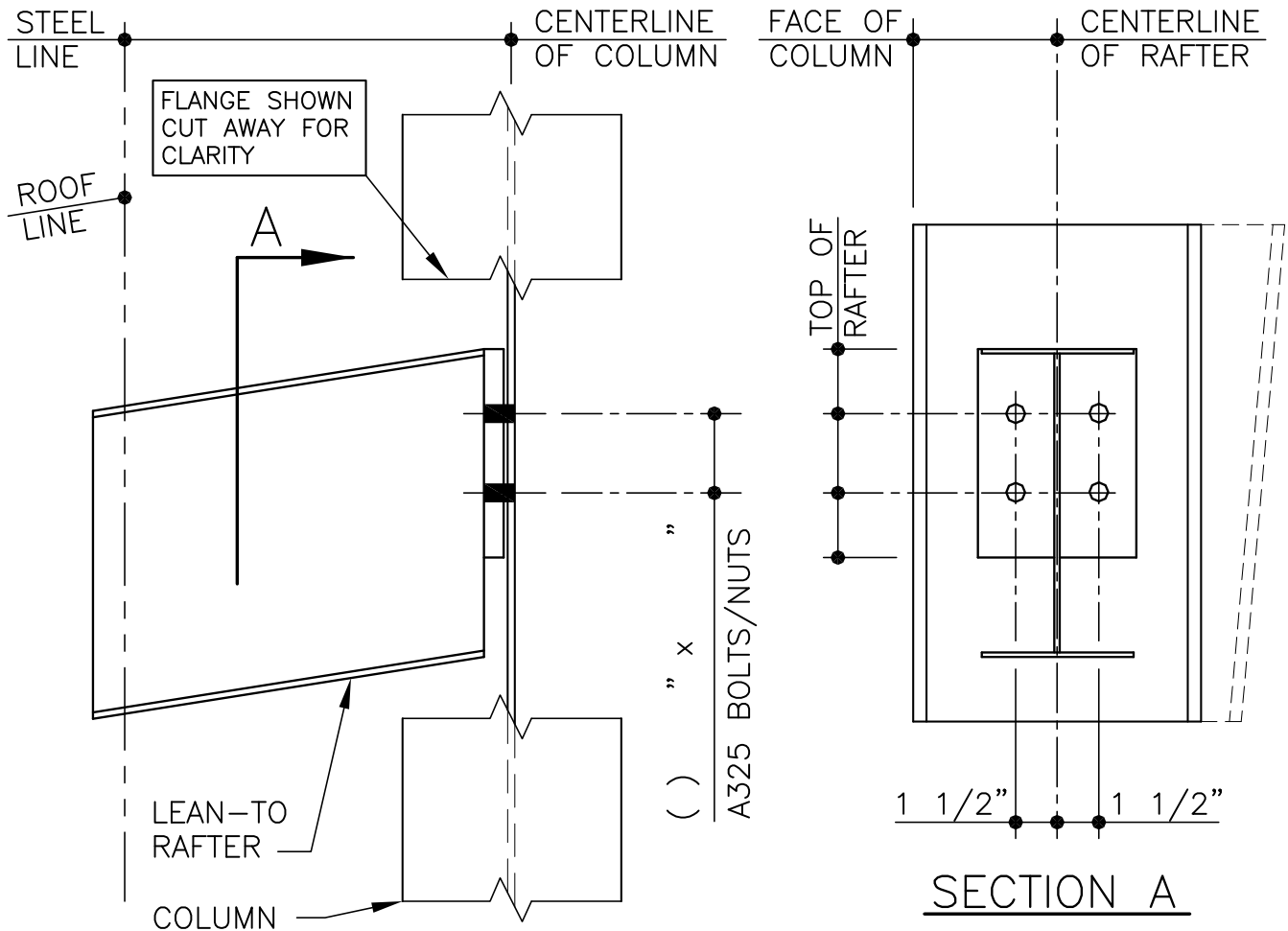
AU0150



PRODUCT & ENGINEERING MANUAL

WEB CONNECTION DETAILS

AU0160 – WEB CONNECTION



THE FULL HEIGHT COLUMN MAY BE STRAIGHT OR TAPERED. THIS DETAIL IS INTENDED TO SHOW THE CONNECTION OF THE LEAN-TO RAFTER ONLY.

LEAN-TO RAFTER TO COLUMN

RAFTER TO WEB OF FULL HEIGHT COLUMN
(WITHOUT SPACER)

AU0160

LAST REVISION
DATE: 02/16/15
BY: AK CHK: EGB

DETAIL NAME IF APPLICABLE
AU0160.DWG

4.13.9